

Ballarat West Growth Area Primary School and Secondary School

Project Cost

Not costed (Victorian Government)

Investment Needed

- Victorian Government agreement and funding to deliver two new schools in the Ballarat West Growth Area (BWGA)

City of Ballarat Investment

- None

Project Description

Two new schools for students in Ballarat’s fastest growing suburbs.

- P-6 primary school in Delacombe Town Centre (referred to by the Department of Education as Cherry Flat Proposed P6)
- 7-12 Secondary School in Winter Valley (referred to by the Department of Education as Ballarat West Proposed 7-12)

Community Benefit

Providing access to modern educational facilities and taking enrolment pressure off existing state schools. Reduced travel time and costs for students and their families, and reduced traffic congestion across the western half of Ballarat, especially at peak times.

Responding to growth

- 2021 Census population figures for the Delacombe Statistical Area, which includes Winter Valley, Bonshaw, and Delacombe, show the area’s population grew by more than 50 per cent in five years to 10,661
- The number of families in the area grew by 55.9 per cent in the same period
- The BWGA, including Delacombe and Winter Valley, is projected to grow from 28,834 in 2023 to 48,500 people by 2036 (*forecast.id*)



Ballarat West Growth Area Primary School and Secondary School continues on next page ➤

Note: All project costs are subject to inflationary pressures leading to cost escalations

Evan King, Chief Executive Officer
☎ 5320 5500 ✉ ceo@ballarat.vic.gov.au

Ballarat West Growth Area Primary School and Secondary School continued

The new schools will ease pressure on government schools in Ballarat's west, particularly Ballarat High School and Phoenix P-12 Community College

Why should Governments invest in this project?

The new schools will:

- Ease pressure on government high schools in Ballarat's west, particularly Ballarat High School and Phoenix P-12 Community College
- Provide additional capacity to meet future regional demand from developments in the north of Golden Plains Shire

Location

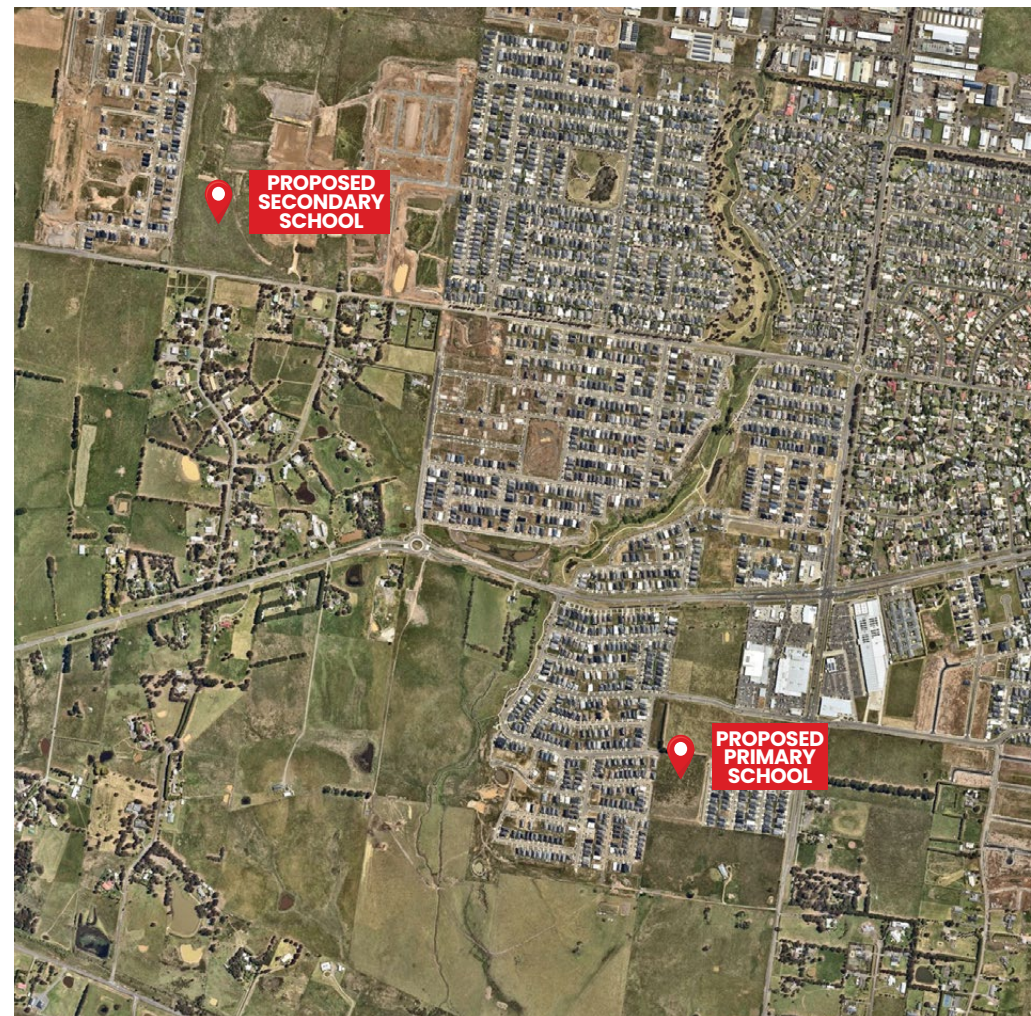
- Primary School: 54 Cherry Flat Road Smythes Creek
- Secondary School: 512 Greenhalghs Road, Winter Valley

Status

- Schools in Delacombe Town Centre and Winter Valley are identified in the Ballarat West Growth Area Precinct Structure Plan (PSP), which received planning approval from the Victorian Government in 2012

Timeline and Next Steps

- Ongoing advocacy



Site Aerial as of 7 November 2023

Note: All project costs are subject to inflationary pressures leading to cost escalations

Evan King, Chief Executive Officer
5320 5500 | ceo@ballarat.vic.gov.au