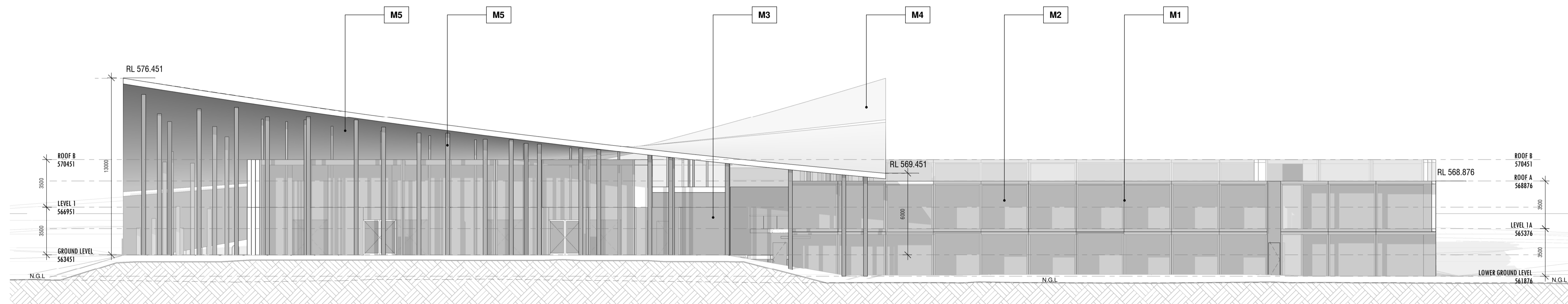
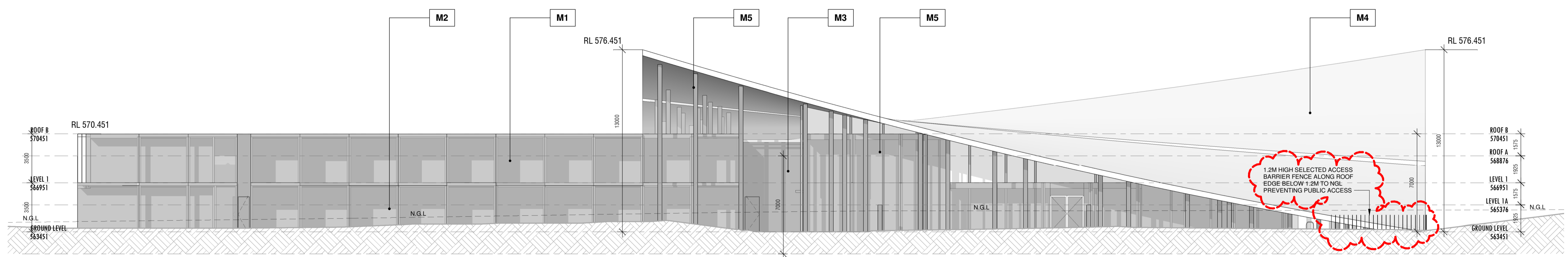


EXTERNAL MATERIAL & FINISHES

- M1** SELECTED TIMBER CLADDING WALL FINISH
- M2** SELECTED POWDER COATED ALUMINIUM FRAME WINDOW - CLEAR GLASS
- M3** SELECTED GLASS CURTAIN WALL
- M4** BIOPHILIC / GREEN ROOF - SELECTED PLANTS REFER TO LANDSCAPE PLAN
- M5** SELECTED TIMBER CLADDING SOFFIT FINISH
- M6** SELECTED TIMBER CLADDING COLUMN FINISH

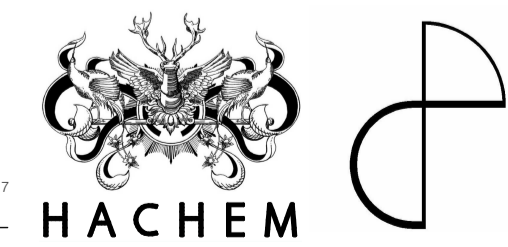


1 NORTH ELEVATION
1:150



2 SOUTH ELEVATION
1:150

HACHEM ARCHITECTURE
INTERIOR MARKETING
HACHEM.COM.AU
183 WESTON STREET
BRUNSWICK EAST 3087
STUDIO +61 1300 734 660



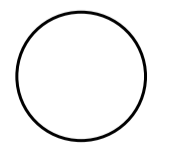
CORNETTA PARTNERS ARCHITECTS
183 WESTON STREET
BRUNSWICK EAST 3087
P (03) 9489 1290
E info@cornetta.com.au
W cparchitects.com.au

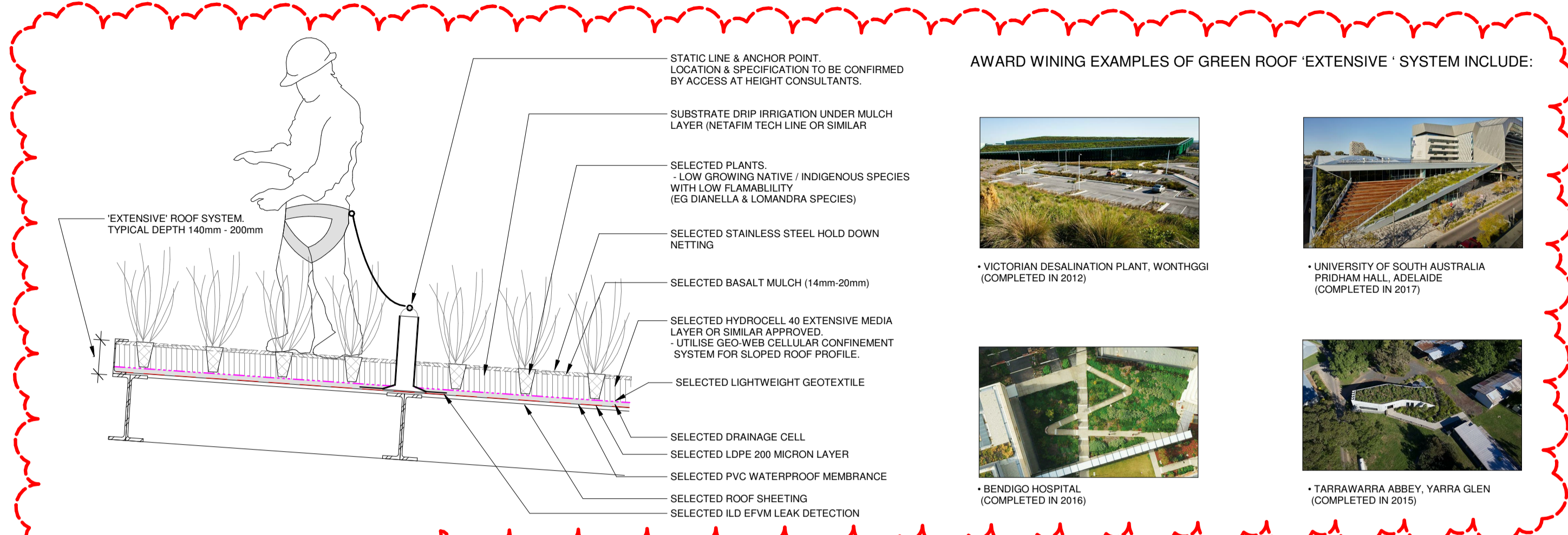
Revision	Client
P1 - PRELIMINARY ISSUE - P1 ON ISSUE	FORTE GROUP PTY LTD

Project
AGRICULTURAL HOTEL DEVELOPMENT
63 MAHERS ROAD, WARRENHEIP

Drawing Title
ELEVATIONS - NORTH & SOUTH
Scale: As indicated @ A1
Date: 03.09.2021

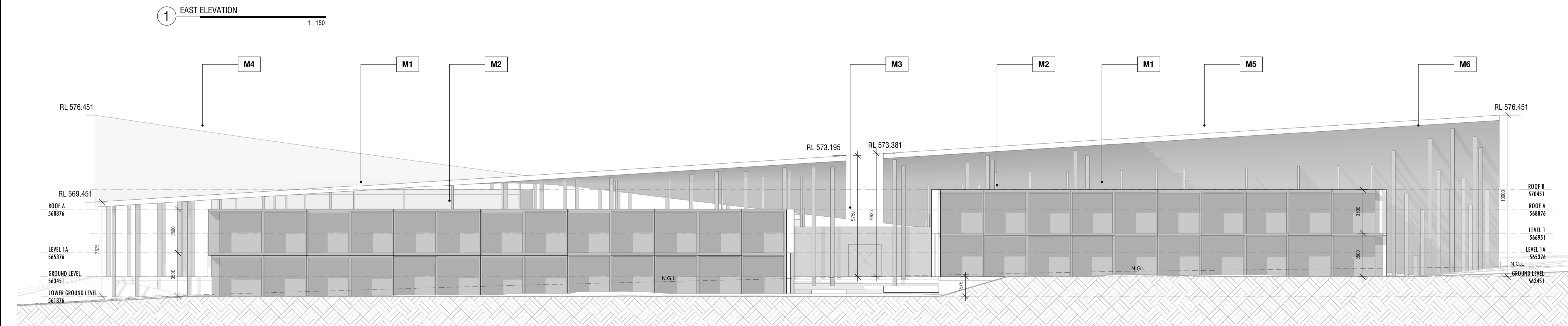
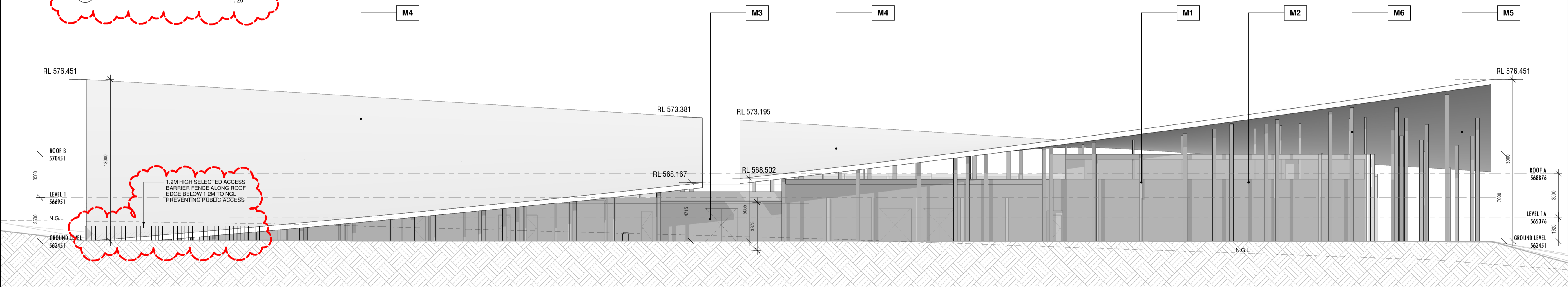
Issue
TOWN PLANNING APPLICATION
Client: CH
Drawing No: TPA04.01
Job No: 21-02
Revision: P1





- EXTERNAL MATERIAL & FINISHES**
- M1** SELECTED TIMBER CLADDING WALL FINISH
 - M2** SELECTED POWDER COATED ALUMINIUM FRAME WINDOW - CLEAR GLASS
 - M3** SELECTED GLASS CURTAIN WALL
 - M4** BIOPHILIC / GREEN ROOF - SELECTED PLANTS REFER TO LANDSCAPE PLAN
 - M5** SELECTED TIMBER CLADDING SOFFIT FINISH
 - M6** SELECTED TIMBER CLADDING COLUMN FINISH

3 TYPICAL DETAIL - BIOPHILIC GREEN ROOF
1:20



HACHEM ARCHITECTURE
INTERIOR MARKETING
HACHEM.COM.AU
183 WESTON STREET
BRUNSWICK EAST 3087
STUDIO +61 1300 734 660



CORNETTA PARTNERS ARCHITECTS
183 WESTON STREET
BRUNSWICK EAST 3087
P (03) 9489 1299
H info@cornetta.com.au
W cparchitects.com.au

Revision
P1 - PRELIMINARY ISSUE
A - TOWN PLANNING RP1

183 WESTON STREET BRUNSWICK EAST 3087	183 WESTON STREET BRUNSWICK EAST 3087	183 WESTON STREET BRUNSWICK EAST 3087
--	--	--

Client FORTE GROUP PTY LTD	Project AGRICULTURAL HOTEL DEVELOPMENT 63 MAHERS ROAD, WARRENHEIP
-------------------------------	---

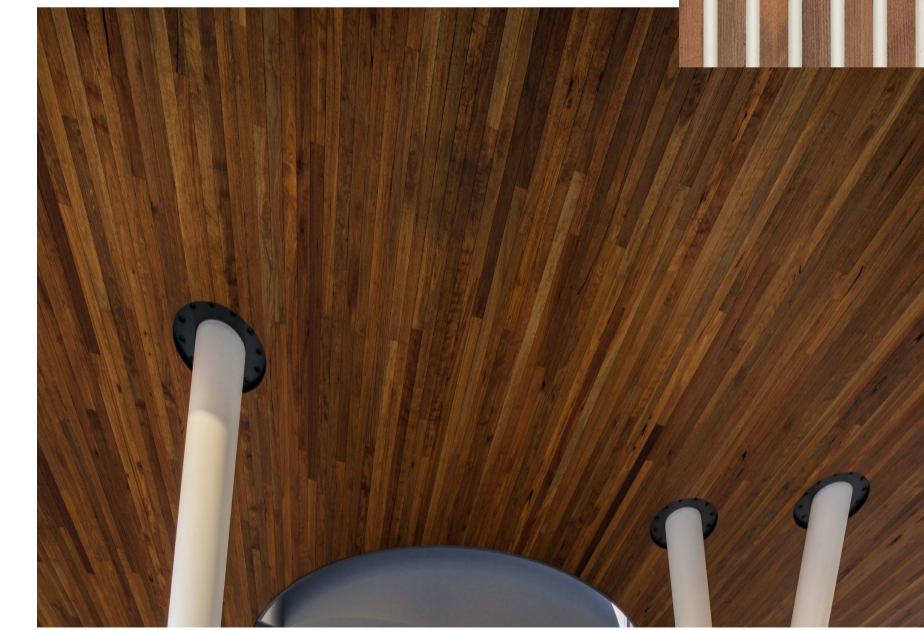
Drawing Title ELEVATIONS - EAST & WEST	Issue TOWN PLANNING APPLICATION
---	------------------------------------

Scale As indicated @ A1	Job No. 21-02
Date 21.10.2021	Revision R1

Drawn CH	Checked TPA04.02
-------------	---------------------

Issue TOWN PLANNING APPLICATION	Job No. 21-02
Drawn CH	Checked TPA04.02
Date 21.10.2021	Revision R1

- M1** SELECTED TIMBER CLADDING WALL FINISH
- M2** SELECTED POWDER COATED ALUMINIUM FRAME WINDOW - CLEAR GLASS
- M3** SELECTED GLASS CURTAIN WALL
- M4** BIOPHILIC / GREEN ROOF - SELECTED PLANTS REFER TO LANDSCAPE PLAN
- M5** SELECTED TIMBER CLADDING SOFFIT FINISH
- M6** SELECTED TIMBER CLADDING COLUMN FINISH



- M1**
- M5**
- M6**



M2



M4

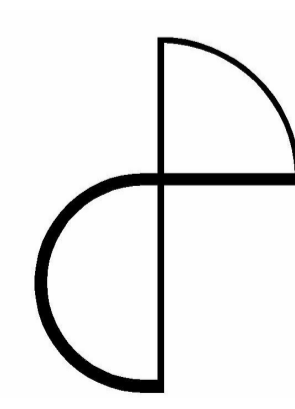


M3

HACHEM ARCHITECTURE
 INTERIOR MARKETING

HACHEM.COM.AU
 INFO@HACHEM.COM.AU
 STUDIO +61 1300 734 560

183 WESTON STREET
 BRUNSWICK EAST 3057
 VICTORIA, AUSTRALIA



**CORNETTA
 PARTNERS
 ARCHITECTS**

183 WESTON STREET
 BRUNSWICK EAST VIC 3057

p (03) 9489 1299
 e info@cparchitects.com.au
 w cparchitects.com.au

Job No.
 21-02
 Date
 21.10.2021

EXTERNAL MATERIAL & FINISHES SCHEDULE

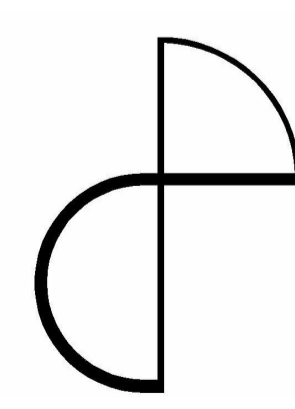
AGRICULTURAL HOTEL DEVELOPMENT

63 MAHERS ROAD, WARRENHEIP



HACHEM ARCHITECTURE
INTERIOR MARKETING

HACHEM.COM.AU
INFO@HACHEM.COM.AU
STUDIO +61 1300 734 560



**CORNETTA
PARTNERS
ARCHITECTS**

183 WESTON STREET
BRUNSWICK EAST VIC 3057

p (03) 9489 1299
e info@cparchitects.com.au
w cparchitects.com.au

Job No.
21-02
Date
21.10.2021

PERSPECTIVE IMAGES

AGRICULTURAL HOTEL DEVELOPMENT

63 MAHERS ROAD, WARRENHEIP