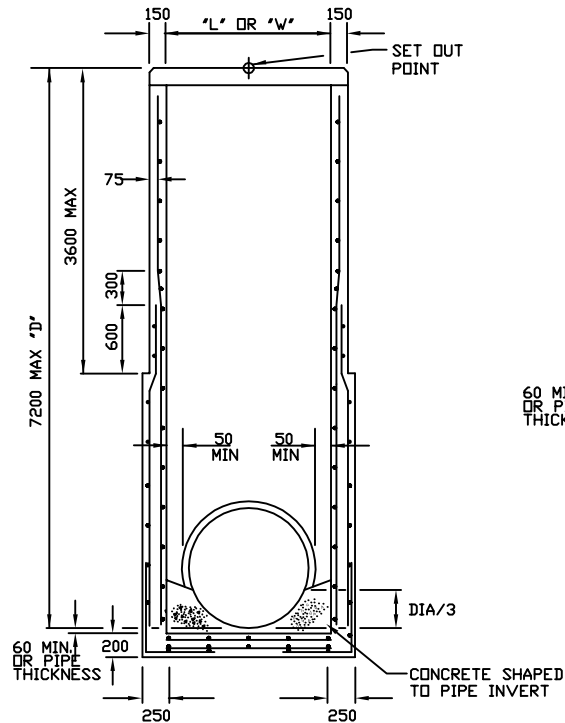


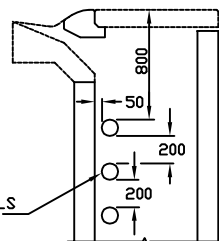
PITS 7201 TO 9600 DEPTH

REINFORCEMENT DETAILS

PIT LENGTH 'L'	REINFORCEMENT
UP TO 1200	F92
1201 TO 1800	F918
1801 TO 2400	F1218

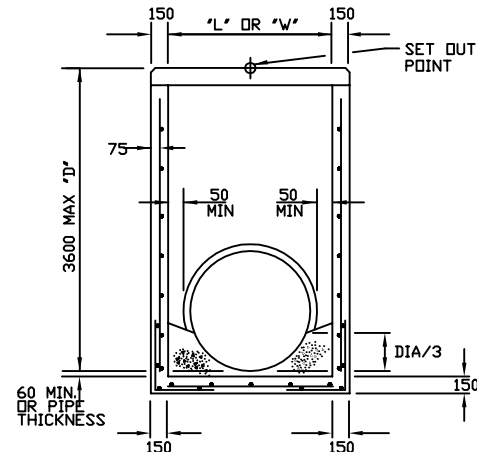


PITS 3601 TO 7200 DEPTH

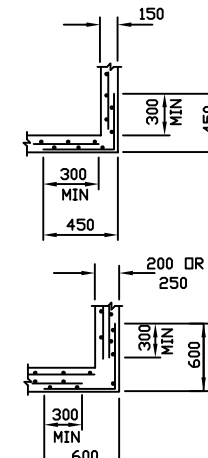


PRECAST PIT

FORM THREE 120 DIA HOLES IN SIDE WALLS TO ACCOMMODATE PAVEMENT DRAINS IN BOTH SIDES.



PITS UP TO 3600 DEPTH



CORNER DETAILS
PLAN VIEW

NOTES:

1. MINIMUM PIT SIZES:

DEPTH	INTERNAL DIMENSIONS	
	PITS IN TRAFFIC LANES	PITS IN OTHER LOCATIONS
0 - 1800	900 x 750	900 x 750
1801 UPWARDS	900 x 900	900 x 900

- FOR PIPES OVER 450 DIA, HAUNCHING MAY BE REQUIRED. REFER SD-P4-1 or 2.
- FOR DETAILS OF SPECIFIC PITS, REFER TO PIT SCHEDULE.
- PIT REINFORCEMENT DETAILS ARE SHOWN IN TABLE. FABRIC IN SHAFT SHALL HAVE THE MAIN BARS POSITIONED HORIZONTALLY. LAPS TO BE 300 MIN. CLEAR COVER TO BE 50 MIN. CORNER RETURN REINFORCEMENT MAY BE FABRIC OR EQUIVALENT BARS. BARS GRADE 400Y TO AS 1302/1991. FABRICS TO AS 1304/1991. CONCRETE GRADE VR330/32 TO SECTION 610 OF 'VICROADS' SPECIFICATION.
- PITS DEEPER THAN 1000 SHALL BE FITTED WITH STEP IRONS, REFER TO RELEVANT A.S.
- FOR TOP OF PIT DETAILS, REFER TO PIT SCHEDULE AND RELEVANT STANDARD DRAWINGS.
- SUBSURFACE DRAIN HOLES TO BE SEALED IF NOT USED.

CITY OF BALLARAT

No.	AMENDMENTS	DATE

Approved by: _____
Date: _____

INSITU UNHAUNCHED PITS



SCALE:
NOT TO SCALE
SHEET 2 OF 2
DRAWING NO:
SD-P3-2