

SETOUT DATA (A) DESIGN CENTRE LINE ROWLANDS STREET			
EASTING	NORTHING	DESIGN LEVEL	DESCRIPTION
750384.495	5835589.094	422.620	A1
750385.983	5835598.983	422.600	A2
750387.472	5835608.871	422.586	A3
750388.960	5835618.760	422.579	A4
750390.448	5835628.649	422.579	A5
750391.937	5835638.537	422.586	A6
750393.425	5835648.426	422.600	A7
750394.914	5835658.314	422.620	A8
750396.402	5835668.203	422.647	A9
750397.891	5835678.092	422.679	A10
750399.379	5835687.980	422.712	A11
750400.867	5835697.869	422.747	A12
750402.356	5835707.757	422.783	A13
750403.844	5835717.646	422.821	A14
750405.333	5835727.535	422.860	A15
750406.821	5835737.423	422.902	A16
750408.309	5835747.312	422.944	A17
750409.798	5835757.201	422.986	A18
750411.286	5835767.089	423.015	A19
750412.775	5835776.978	423.030	A20
750414.263	5835786.866	423.031	A21
750415.751	5835796.755	423.017	A22
750417.240	5835806.644	422.991	A23
750417.350	5835807.379	422.989	A24
750418.303	5835816.583	422.963	A25
750418.371	5835826.578	422.938	A26
750417.608	5835835.319	422.923	A27
750417.449	5835836.532	422.922	A28
750416.151	5835846.447	422.913	A29
750414.852	5835856.363	422.911	A30
750414.392	5835859.877	422.913	A31
750413.957	5835863.901	422.916	A32
750413.738	5835866.299	422.918	A33
750413.134	5835876.280	422.932	A34
750413.102	5835877.233	422.934	A35
750413.016	5835885.121	422.951	A36
750413.031	5835886.279	422.954	A37
750413.036	5835886.684	422.955	A38
750413.196	5835896.278	422.983	A39
750413.362	5835906.276	423.017	A40
750413.375	5835907.086	423.038	A41
750413.528	5835916.275	423.051	A42
750413.694	5835926.273	423.088	A43
750413.861	5835936.272	423.126	A44
750413.978	5835943.310	423.155	A45
750413.714	5835946.254	423.167	A46
750408.581	5835954.588	423.210	A47
750400.163	5835957.541	423.224	A48

SETOUT DATA (B) DESIGN CENTRELINE (1) ROWLANDS STREET			
EASTING	NORTHING	DESIGN LEVEL	DESCRIPTION
750417.350	5835807.379	422.989	B1
750418.839	5835817.267	422.963	B2
750418.964	5835818.101	422.960	B3
750419.911	5835827.205	422.938	B4
750419.989	5835837.201	422.922	B5
750419.222	5835846.041	422.913	B6
750419.075	5835847.155	422.913	B7
750418.211	5835853.722	422.911	B8
750417.770	5835857.070	422.912	B9
750417.692	5835857.662	422.912	B10
750417.207	5835861.346	422.913	B11
750416.464	5835866.984	422.918	B12
750415.159	5835876.898	422.932	B13
750415.060	5835877.650	422.934	B14
750414.065	5835886.837	422.954	B15
750413.468	5835896.819	422.984	B16
750413.371	5835906.817	423.017	B17

ISSUE	AMENDMENT	DATE

EVERY CARE HAS BEEN TAKEN TO ENSURE THAT THE INFORMATION SHOWN ON THE DRAWING IS ACCURATE HOWEVER SOME VARIATIONS FROM RECORDS MAY EXIST, AND COMPLETE ACCURACY CANNOT BE GUARANTEED.

SETOUT DATA A B

SCALES

DO NOT SCALE THIS DRAWING
WARNING: THE LOCATION OF U/G SERVICES SHOWN IS BASED ON INFORMATION SUPPLIED BY OTHER AUTHORITIES AND SHOULD BE PROVEN ON SITE. ALL WORKS NEAR SERVICES SHALL COMPLY WITH REQUIREMENTS OF THE RELEVANT AUTHORITY

CITY OF BALLARAT ROWLANDS STREET VICKERS ST - HILL ST



SURVEY: _____ DATE: _____
DRAWN: _____ DATE: _____
DESIGN: _____ DATE: _____
FILES: _____

Pete Batts TEAM LEADER DESIGN
Kayla North MANAGER INFRASTRUCTURE

DRAWING No. **2020-56-20**
SHEET 20 OF 24

SETOUT DATA C - ROWLANDS STREET No 2 KERB AND CHANNEL - REFER SD-K1 DATA FOR LIP / PAVEMENT			
EASTING	NORTHING	DESIGN LEVEL	DESCRIPTION
750389.084	5835653.851	422.456	C1
750390.422	5835654.183	422.471	C2
750391.133	5835655.363	422.485	C3
750391.772	5835659.615	422.530	C4
750391.740	5835662.075	422.556	C5
750390.923	5835664.396	422.582	C6
750389.408	5835666.334	422.607	C7
750387.353	5835667.687	422.633	C8
750384.974	5835668.313	422.659	C9
750384.040	5835668.401	422.668	C10
750386.005	5835678.949	422.709	C11
750387.398	5835678.817	422.679	C12
750389.690	5835678.947	422.663	C13
750391.838	5835679.757	422.655	C14
750393.647	5835681.170	422.643	C15
750394.951	5835683.059	422.628	C16
750395.631	5835685.251	422.609	C17
750395.299	5835686.589	422.589	C18
750394.119	5835687.299	422.554	C19
750403.451	5835680.771	422.507	C20
750402.114	5835680.440	422.543	C21
750401.403	5835679.259	422.567	C22
750401.272	5835678.387	422.580	C23
750401.325	5835675.818	422.593	C24
750402.230	5835673.413	422.564	C25
750403.886	5835671.448	422.514	C26
750406.101	5835670.146	422.463	C27
750408.624	5835669.658	422.413	C28
750414.623	5835669.529	TIE IN	C29
750411.733	5835659.588	422.224	C30
750405.169	5835659.729	422.326	C31
750403.000	5835659.462	422.363	C32
750400.997	5835658.588	422.407	C33
750399.325	5835657.180	422.453	C34
750398.123	5835655.354	422.484	C35
750397.490	5835653.263	422.482	C36
750397.822	5835651.925	422.461	C37
750399.003	5835651.215	422.424	C38

SETOUT DATA (D) - ROWLANDS STREET No 2 KERB AND CHANNEL - REFER SD-K1 DATA FOR LIP OF KERB PAVEMENT			
EASTING	NORTHING	DESIGN LEVEL	DESCRIPTION
750405.592	5835763.521	422.849	D1
750406.929	5835763.853	422.890	D2
750407.639	5835765.033	422.932	D3
750407.611	5835767.169	422.997	D4
750406.903	5835769.184	423.055	D5
750405.587	5835770.867	423.100	D6
750403.804	5835772.042	423.133	D7
750401.738	5835772.586	423.154	D8
750395.344	5835773.182	423.197	D9
750396.154	5835783.975	423.192	D10
750404.055	5835783.144	423.114	D11
750406.046	5835783.257	423.092	D12
750407.911	5835783.959	423.063	D13
750409.483	5835785.187	423.029	D14
750410.615	5835786.827	422.989	D15
750411.206	5835788.732	422.945	D16
750410.875	5835790.069	422.912	D17
750409.694	5835790.779	422.874	D18
750415.792	5835762.761	422.821	D19
750415.838	5835760.530	422.808	D20
750416.625	5835758.441	422.784	D21
750418.063	5835756.734	422.749	D22
750419.988	5835755.604	422.702	D23
750422.180	5835755.180	422.650	D24
750427.181	5835755.075	TIE IN	D25
750426.967	5835744.877	TIE IN	D26
750418.010	5835745.066	422.636	D27
750415.842	5835744.797	422.655	D28
750413.839	5835743.923	422.685	D29
750412.169	5835742.515	422.720	D30
750410.967	5835740.690	422.747	D31
750410.321	5835738.473	422.758	D32
750410.667	5835737.261	422.749	D34
750411.847	5835736.551	422.718	D35

ISSUE	AMENDMENT	DATE

EVERY CARE HAS BEEN TAKEN TO ENSURE THAT THE INFORMATION SHOWN ON THE DRAWING IS ACCURATE HOWEVER SOME VARIATIONS FROM RECORDS MAY EXIST, AND COMPLETE ACCURACY CANNOT BE GUARANTEED.

SETOUT DATA C D

SCALES

DO NOT SCALE THIS DRAWING


WARNING: THE LOCATION OF U/G SERVICES SHOWN IS BASED ON INFORMATION SUPPLIED BY OTHER AUTHORITIES AND SHOULD BE PROVEN ON SITE. ALL WORKS NEAR SERVICES SHALL COMPLY WITH REQUIREMENTS OF THE RELEVANT AUTHORITY

**CITY OF BALLARAT
ROWLANDS STREET
VICKERS ST - HILL ST**

SURVEY:	DATE:
DRAWN:	DATE:
DESIGN:	DATE:
FILES:	DATE:

Pete Bats TEAM LEADER DESIGN

Kayla Weston MANAGER INFRASTRUCTURE

CITY OF BALLARAT 

DRAWING No. **2020-56-21**
SHEET 21 OF 24

SETOUT DATA E - WHITTA STREET No 2 KERB AND CHANNEL - REFER SD-K1 DATA FOR LIP/PAVEMENT			
EASTING	NORTHING	DESIGN LEVEL	DESCRIPTION
750424.339	5835819.728	422.806	E1
750424.615	5835822.122	422.799	E2
750424.837	5835824.521	422.792	E3
750425.003	5835826.924	422.785	E4
750425.115	5835829.331	422.779	E5
750425.171	5835831.740	422.772	E6
750425.172	5835834.149	422.765	E7
750425.117	5835836.558	422.758	E8
750425.008	5835838.965	422.751	E9
750424.890	5835840.763	422.746	E10
750423.584	5835841.179	422.799	E11
750422.949	5835842.393	422.811	E12
750423.111	5835845.011	422.793	E13
750424.055	5835847.459	422.776	E14
750425.693	5835849.508	422.734	E15
750427.872	5835850.968	422.645	E16
750430.390	5835851.703	422.532	E17
750430.451	5835859.578	422.540	E18
750427.945	5835859.578	422.585	E19
750425.524	5835860.227	422.625	E20
750423.354	5835861.480	422.657	E21
750421.581	5835863.252	422.679	E22
750420.328	5835865.422	422.692	E23
750419.680	5835867.843	422.700	E24
750419.006	5835872.962	422.718	E25
750418.331	5835878.081	422.735	E26
750417.860	5835881.954	422.748	E27
750417.466	5835885.835	422.761	E28
750418.403	5835887.583	422.769	E29
750419.028	5835888.731	422.774	E30
750418.844	5835891.337	422.783	E31
750418.695	5835893.945	422.792	E32
750418.581	5835896.554	422.800	E33
750418.502	5835899.165	422.809	E34
750418.458	5835901.777	422.818	E35
750418.449	5835904.390	422.826	E36
750418.475	5835907.002	422.835	E37

SETOUT DATA (F) - (HILL STREET) No 2 KERB AND CHANNEL - REFER SD-K1 DATA FOR LIP / PAVEMENT			
EASTING	NORTHING	DESIGN LEVEL	DESCRIPTION
750408.839	5835941.002	423.066	F1
750410.120	5835941.508	423.078	F2
750410.668	5835942.772	423.091	F3
750410.066	5835946.080	423.110	F4
750408.240	5835948.905	423.110	F5
750405.471	5835950.813	423.090	F6
750402.182	5835951.514	423.049	F7
750396.682	5835951.586	422.967	F8

ISSUE	AMENDMENT	DATE

EVERY CARE HAS BEEN TAKEN TO ENSURE THAT THE INFORMATION SHOWN ON THE DRAWING IS ACCURATE HOWEVER SOME VARIATIONS FROM RECORDS MAY EXIST, AND COMPLETE ACCURACY CANNOT BE GUARANTEED.

SETOUT DATA EF

SCALES


DO NOT SCALE THIS DRAWING

WARNING: THE LOCATION OF U/G SERVICES SHOWN IS BASED ON INFORMATION SUPPLIED BY OTHER AUTHORITIES AND SHOULD BE PROVIDED ON SITE. ALL WORKS NEAR SERVICES SHALL COMPLY WITH REQUIREMENTS OF THE RELEVANT AUTHORITY.

**CITY OF BALLARAT
ROWLANDS STREET
VICKERS ST - HILL ST**

SURVEY:	DATE:
DRAWN:	DATE:
DESIGN:	DATE:
FILES:	DATE:

Pete Bats TEAM LEADER DESIGN
Kaugh Nott MANAGER INFRASTRUCTURE

CITY OF BALLARAT 

DRAWING No. **2020-56-22**
SHEET 22 OF 24

SETOUT DATA (S) - SPLITTER ISLANDS No 6 KERB - REFER SD-K1 DATA FOR LIP /PAVEMENT		
EASTING	NORTHING	DESCRIPTION
750410.018	5835663.827	S1
750410.056	5835665.626	S2
750406.918	5835663.893	S3
750406.957	5835665.693	S4
750378.537	5835673.386	S5
750378.707	5835675.178	S6
750386.671	5835674.423	S7
750386.501	5835672.631	S8
750420.136	5835751.022	S9
750428.134	5835750.854	S10
750428.096	5835749.054	S11
750420.098	5835749.223	S12
750391.686	5835779.835	S13
750401.641	5835778.888	S14
750401.471	5835777.096	S15
750391.516	5835778.043	S16
750418.328	5835827.474	S17
750418.001	5835831.876	S18
750417.865	5835834.328	S19
750417.930	5835836.784	S20
750418.196	5835839.225	S21
750418.531	5835841.451	S22
750419.722	5835841.412	S23
750419.956	5835837.932	S24
750420.067	5835834.445	S25
750420.058	5835830.957	S26
750419.926	5835827.472	S27
750414.392	5835859.877	S28
750413.957	5835863.901	S29
750414.786	5835864.513	S30
750416.419	5835863.253	S31
750417.207	5835861.346	S32
750417.692	5835857.662	S33
750415.500	5835856.844	S34
750414.769	5835858.296	S35
		S36
750413.102	5835877.233	S37
750413.020	5835881.176	S38
750413.016	5835885.121	S39
750414.214	5835885.171	S40
750414.601	5835881.406	S41
750415.093	5835877.394	S42

ISSUE	AMENDMENT	DATE

EVERY CARE HAS BEEN TAKEN TO ENSURE THAT THE INFORMATION SHOWN ON THE DRAWING IS ACCURATE HOWEVER SOME VARIATIONS FROM RECORDS MAY EXIST, AND COMPLETE ACCURACY CANNOT BE GUARANTEED.

SETOUT DATA S

SCALES

DO NOT SCALE THIS DRAWING

WARNING: THE LOCATION OF U/G SERVICES SHOWN IS BASED ON INFORMATION SUPPLIED BY OTHER AUTHORITIES AND SHOULD BE PROVEN ON SITE. ALL WORKS NEAR SERVICES SHALL COMPLY WITH REQUIREMENTS OF THE RELEVANT AUTHORITY

CITY OF BALLARAT
ROWLANDS STREET
VICKERS ST - HILL ST

SURVEY: _____ DATE: _____
DRAWN: _____ DATE: _____
DESIGN: _____ DATE: _____
FILES: _____

Pete Bats TEAM LEADER DESIGN
Vaughn Northcote MANAGER INFRASTRUCTURE

CITY OF BALLARAT

DRAWING No. **2020-56-23**
SHEET 23 OF 24

01-April-2020

PIT SCHEDULE - ROWLANDS STREET, SEBASTOPOL

PIT No.	TYPE	DIMENSION	SETOUT		INLET		OUTLET		TOP OF PIT	DEPTH TO INVERT	REMARKS
			EASTING	NORTHING	Dia	IL	Dia	IL			
1	S.E.PIT (FLUME)	EXIST	EXISTING	PIT	EXIST	EXIST	EXIST	EXIST	EXIST	EXIST	MODIFY EXIST PIT. REFER SD-P8.
2	S.E.PIT (FLUME)	EXIST	EXISTING	PIT	300	421.790	EXIST	EXIST	EXIST	EXIST	MODIFY EXIST PIT. REFER SD-P8.
3	S.E.PIT (FLUME)	900 x 750	750383.296	5835624.466	EXIST	EXIST	EXIST	EXIST	EXIST	EXIST	REFER SD-P8
4	S.E.PIT	900 x 750	750395.682	5835622.602			300	421.890	422.485	0.595	REFER SD-P1-1/2
5	J.PIT	EXIST	EXISTING	PIT	450 x 150	422.490	300	EXIST	EXIST	EXIST	JOIN NEW CULVERT
6	S.E.PIT (FLUME)	900 x 750	750392.641	5835687.977			450 x 150	422.325	422.659	0.334	REFER SD-P8
7	S.E.PIT (FLUME)	EXIST	EXISTING	PIT	EXIST	EXIST	EXIST	EXIST	EXIST	EXIST	MODIFY EXIST PIT. REFER SD-P8
8	S.E.PIT	900 x 750	750425.904	5835840.370			300	422.178	422.866	0.688	REFER SD-P1-1/2
9	S.E.PIT	EXIST	EXISTING	PIT	300	421.650	EXIST	EXIST			REMOVE REDUNDANT PIPE. JOIN NEW PIPE
10	D/S.E.PIT	1800 x 750	750408.932	5835854.670			300	421.485	422.856	1.371	REFER SD-P2-1/2 REMOVE REDUNDANT PIT

ISSUE	AMENDMENT	DATE

EVERY CARE HAS BEEN TAKEN TO ENSURE THAT THE INFORMATION SHOWN ON THE DRAWING IS ACCURATE HOWEVER SOME VARIATIONS FROM RECORDS MAY EXIST, AND COMPLETE ACCURACY CANNOT BE GUARANTEED.

PIT SCHEDULE

SCALES

DO NOT SCALE THIS DRAWING


WARNING: THE LOCATION OF U/G SERVICES SHOWN IS BASED ON INFORMATION SUPPLIED BY OTHER AUTHORITIES AND SHOULD BE PROVEN ON SITE. ALL WORKS NEAR SERVICES SHALL COMPLY WITH REQUIREMENTS OF THE RELEVANT AUTHORITY.

**CITY OF BALLARAT
ROWLANDS STREET
VICKERS ST - HILL ST**

SURVEY: DATE: _____
DRAWN: DATE: _____
DESIGN: DATE: _____
FILES: _____

Pet Bats
TEAM LEADER DESIGN

Kayla Weston
MANAGER INFRASTRUCTURE

CITY OF BALLARAT 

DRAWING No. **2020-56-24**
SHEET 24 OF 24

9.5. TENDER 2020/21-59 ERRARD STREET SOUTH

Division: Infrastructure & Environment
Director: Bridget Wetherall
Author/Position: Robin Hand – Contracts Administration Officer

PURPOSE

1. To award Contract 2020/21-59 'Road Rehabilitation & Associated Works in Errard Street South' to Streebson Pty Ltd t/a Ballarat Excavation & Transport for a total tendered price of \$310,387.20 (ex GST).
2. The scope of this contract involves the rehabilitation of Errard Street South, Ballarat Central between Dana Street and Eyre Street. This project will see the existing unsealed shoulders constructed, a new road surface and formalised line marked car parking.

BACKGROUND

3. Errard Street, Ballarat Central between Dana Street and Eyre Street is a local access road servicing more than 23 residential properties and one (1) Primary School.
4. This section of Errard Street has unsealed road shoulders with informal parking which causes safety issues for users accessing the Primary School.
5. The project involves several components of work which were identified during the design stage including the following:
 - earthworks;
 - sealing of unsealed shoulders;
 - asphalt overlay road surfacing;
 - bluestone channel reconstruction;
 - lawn nature strip reinstatement;
 - parking bay delineation and lane marking;
 - raised pavement markers, and ancillary works.
6. The prioritisation of this project and the extent of works was determined by using a weighted scoring methodology. This weighting is based off specific scoring criteria as set out below:
 - Sustainable Service - Asset Management Plan requirement (whole of life), requirement for urgent treatment, service level not up to standard for application;
 - Safety - Safety hazard reduction;
 - Financial benefit - Reduced costs, return on investment, generates revenue;
 - Hierarchy Level - Level of Importance in network;
 - Community Benefit - Improved local community equity, promotes sustainable economic benefit for the community, satisfies ratepayer initiative, enhances streetscape.

This project was one of many that received high weightings and as such was placed on the 2020/21 Capital Works Program.

KEY MATTERS

7. Eight (8) tender submissions were received.
8. This project is being funded from the 2020/21 Capital Works Program.

OFFICER RECOMMENDATION

9. That Council:

9.1 Enter into contract number 2020/21-59 'Road Rehabilitation & Associated Works in Errard Street South' to Streebson Pty Ltd t/a Ballarat Excavation & Transport for a total tendered price of \$310,387.20 (ex GST).

9.2 Delegate to the Chief Executive Officer the authority to execute the associated contract on behalf of Council.

ATTACHMENTS

1. Governance Review [9.5.1 - 2 pages]
2. Errard ST Plans 59 - For Tender Purposes Only Signed [9.5.2 - 15 pages]

ALIGNMENT WITH COUNCIL VISION, COUNCIL PLAN, STRATEGIES AND POLICIES

1. This report supports the Council Plan goals of liveability and sustainability by upgrading Council's Infrastructure and Assets throughout the municipal road network to provide safer passage for all affected users.

COMMUNITY IMPACT

2. The City of Ballarat has a charter to serve its local community. This project is providing the community with much needed upgrades to Council assets which will enable the users to have greater ease of vehicular and pedestrian access.
3. This project will provide enhanced user safety for the wider community as it aids in servicing access to St Patrick's Primary School.

CLIMATE EMERGENCY AND ENVIRONMENTAL SUSTAINABILITY IMPLICATIONS

4. There will not be any significant environmental implications resulting from this project. Environmental controls will be in place for the duration of the project. The recommended tenderer has the appropriate Environmental Management System to be able to cater for any environmental issues that may result during the construction of the project.

ECONOMIC SUSTAINABILITY IMPLICATIONS

5. The construction of this project will see Ballarat Excavation & Transport responsible for maintaining eight (8) and creating one (1) current full-time local job over the period of the project along with ancillary employment from material suppliers and professional services.
6. Approximately 100% (\$310,387.20) of the total project value will utilise labour, materials, plant and equipment sourced from within the defined group of local municipalities.

FINANCIAL IMPLICATIONS

7. The tender price is \$310,387.20 (ex GST) which includes a provisional sum of \$56,834.00 approx. built into the contract for contingencies. There is \$300,000.00 allocated from the 2020/21 Capital Works Program for the construction of this project with the remainder of the funds to be allocated from anticipated savings across the remainder of the 2020/21 Capital Works Program.

LEGAL AND RISK CONSIDERATIONS

8. The project has been designed and will be constructed in accordance with all relevant design standards. The contract provides for management of traffic, pedestrians, property and environment during the delivery of the works, with stringent Occupational Health and Safety requirements. The recommended contractor in this instance has appropriate OHS systems operable to meet the requirements of this project.

9. The most recent project completed by the recommended contractor underwent a site safety review by Council Officers which provided positive feedback of adherence to their Safe Work Method Statements and an improved construction methodology which saw the project completed within the specified timeframe and on schedule without any construction risks to the affected users. Council Officers are continually looking to work with this contractor to assist them in finding improvements in their methodologies to prevent any potential risk being presented to the public.

HUMAN RIGHTS CONSIDERATIONS

10. It is considered that this report does not impact on any human rights identified in the *Charter of Human Rights and Responsibilities Act 2006*. It is further considered that the works will enhance Freedom of Movement within the area in which a person may live.

COMMUNITY CONSULTATION AND ENGAGEMENT

11. Consultation with road users affected by this project has been undertaken by Council's Infrastructure & Environment Unit.
12. The Chief Executive Officer and the Communications and Marketing Unit of Council will participate in the media and communications associated with the delivery of works under this contract.

CONFLICTS OF INTEREST THAT HAVE ARISEN IN PREPARATION OF THE REPORT

13. Council Officers affirm that no direct or indirect interests need to be declared in relation to the matter of this Report.

FOR TENDER PURPOSES ONLY

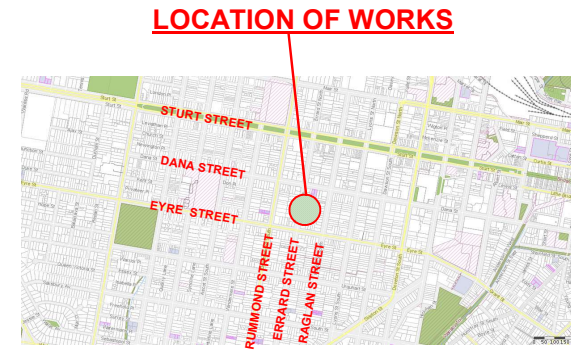


**ROAD SHOULDER CONSTRUCTION
ERRARD STREET SOUTH
EYRE STREET - DANA STREET**

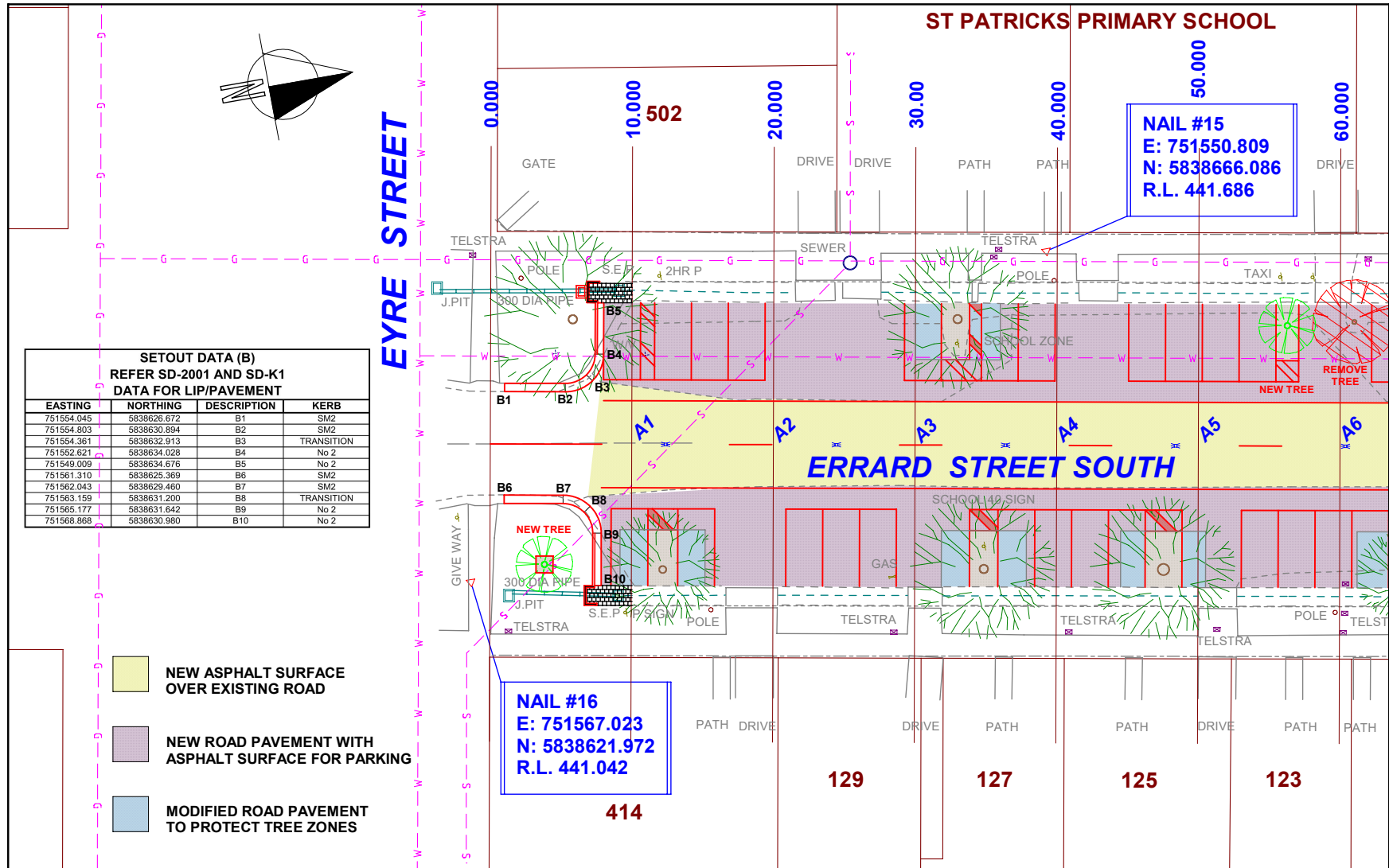
DRAWING No: 2018-06
CONTRACT No: 2020/21-59

2018-06	TITLE PAGE
2018-06-01	PLAN 1 AND SETOUT DATA
2018-06-02	PLAN 2
2018-06-03	PLAN 3
2018-06-04	CROSS SECTIONS 1
2018-06-05	CROSS SECTIONS 2
2018-06-06	CROSS SECTIONS 3
2018-06-07	CROSS SECTIONS 4
2018-06-08	CROSS SECTIONS 5
2018-06-09	LONG SECTION 1 AND SETOUT DATA
2018-06-10	LONG SECTION 2
2018-06-11	LONG SECTION 3
2018-06-12	TYPICAL CROSS SECTIONS
2018-06-13	TYPICAL DETAIL 1
2018-06-14	TYPICAL DETAIL 2

CONTRACT DRAWINGS



LOCALITY PLAN



**SETOUT DATA (B)
REFER SD-2001 AND SD-K1
DATA FOR LIP/PAVEMENT**

EASTING	NORTHING	DESCRIPTION	KERB
751554.045	5838626.672	B1	SM2
751554.803	5838630.894	B2	SM2
751554.361	5838632.913	B3	TRANSITION
751552.621	5838634.028	B4	No 2
751549.009	5838634.676	B5	No 2
751561.310	5838625.369	B6	SM2
751562.043	5838629.460	B7	SM2
751563.159	5838631.200	B8	TRANSITION
751565.177	5838631.642	B9	No 2
751568.868	5838630.980	B10	No 2

- NEW ASPHALT SURFACE OVER EXISTING ROAD
- NEW ROAD PAVEMENT WITH ASPHALT SURFACE FOR PARKING
- MODIFIED ROAD PAVEMENT TO PROTECT TREE ZONES

ISSUE	AMENDMENT	DATE

EVERY CARE HAS BEEN TAKEN TO ENSURE THAT THE INFORMATION SHOWN ON THE DRAWING IS ACCURATE HOWEVER SOME VARIATIONS FROM RECORDS MAY EXIST, AND COMPLETE ACCURACY CANNOT BE GUARANTEED.

PLAN 1

SCALES

DO NOT SCALE THIS DRAWING

CITY OF BALLARAT
ERRARD STREET SOUTH
DANA STREET - EYRE STREET

CITY OF BALLARAT

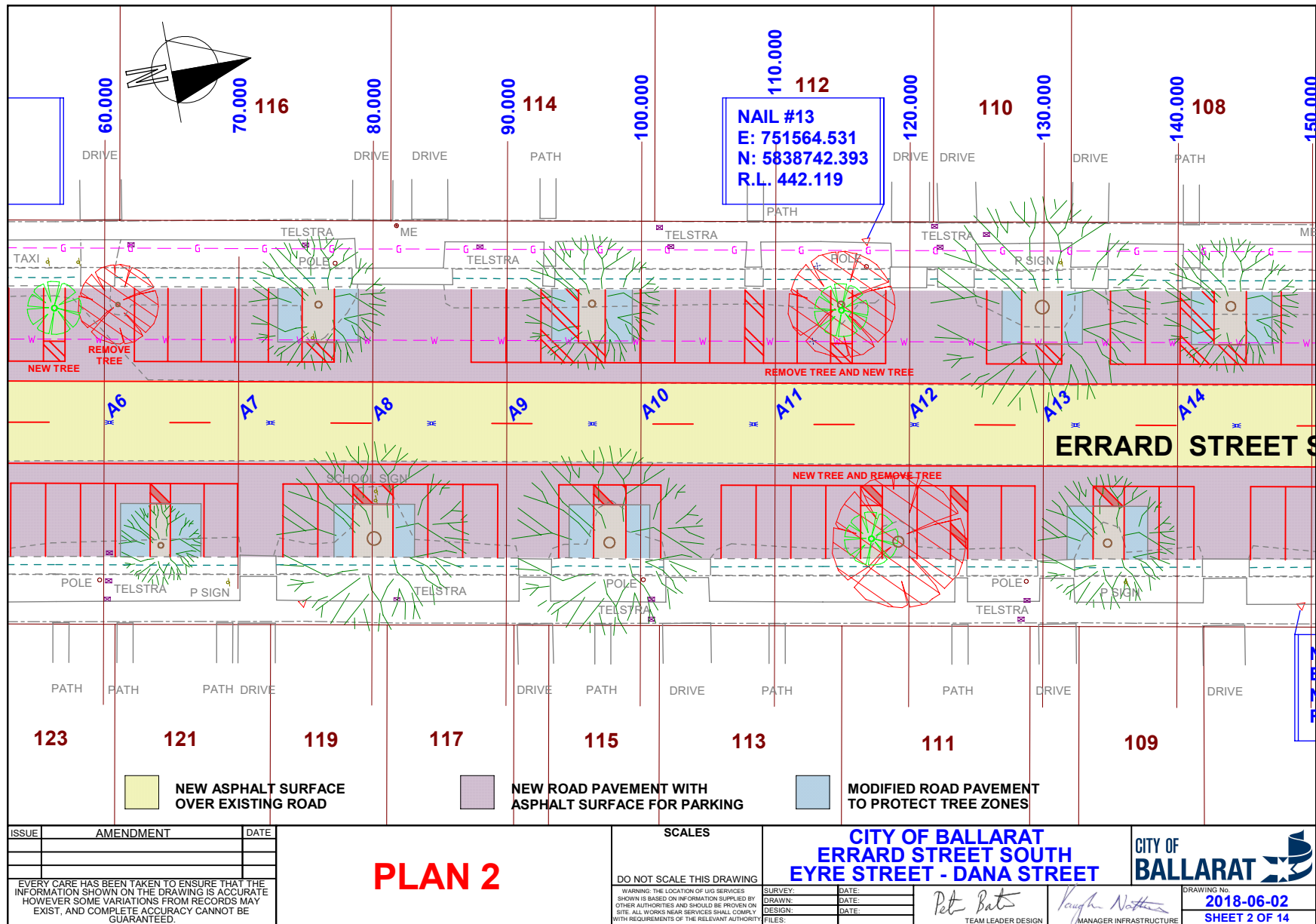
WARNING: THE LOCATION OF U/G SERVICES SHOWN IS BASED ON INFORMATION SUPPLIED BY OTHER AUTHORITIES AND SHOULD BE PROVEN ON SITE. ALL WORKS NEAR SERVICES SHALL COMPLY WITH REQUIREMENTS OF THE RELEVANT AUTHORITY

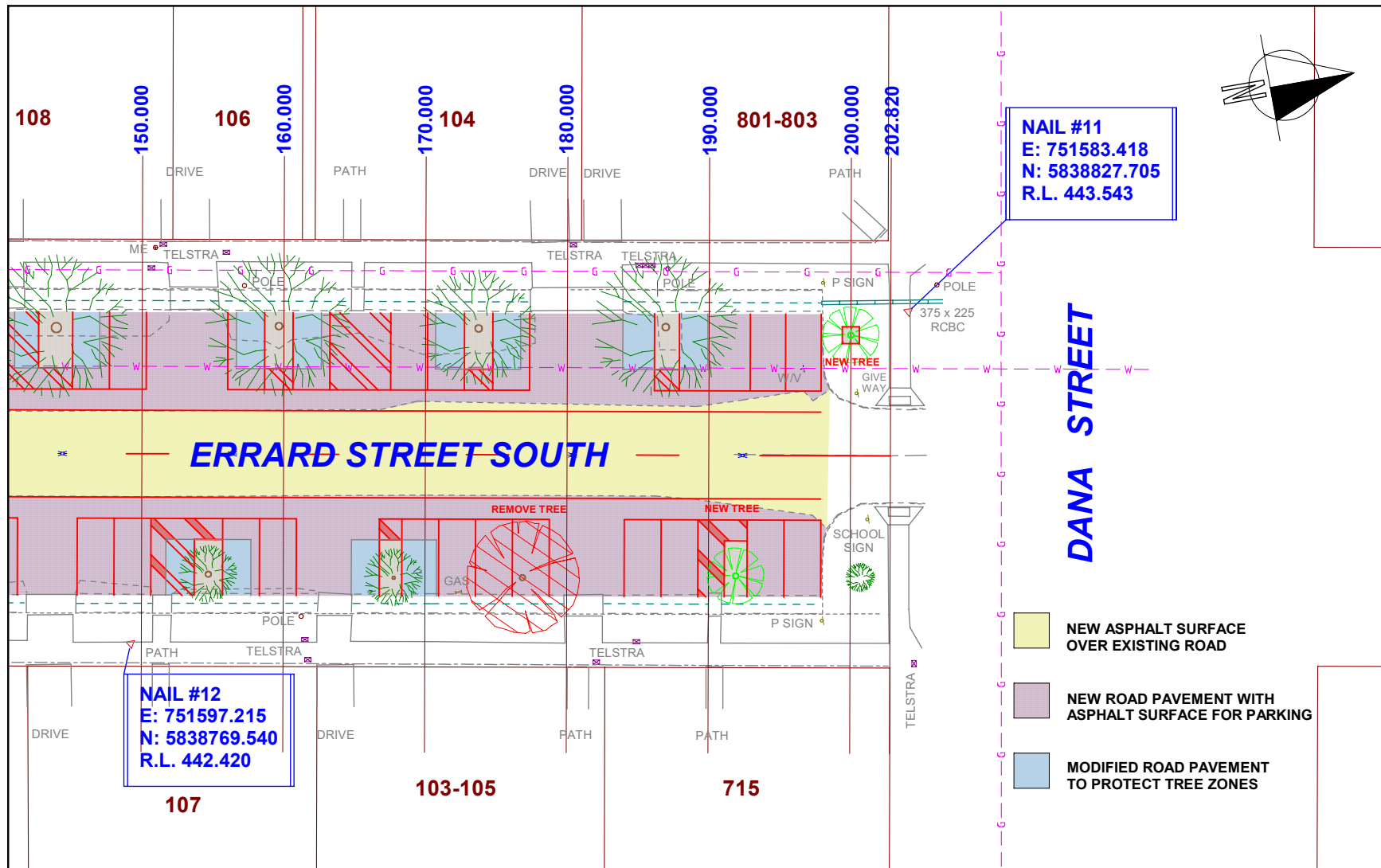
SURVEY:	DATE:
DRAWN:	DATE:
DESIGN:	DATE:
FILES:	DATE:

Pet Bats TEAM LEADER DESIGN

Youghan North MANAGER INFRASTRUCTURE

DRAWING No. **2018-06-01**
SHEET 1 OF 14





NAIL #11
E: 751583.418
N: 5838827.705
R.L. 443.543

NAIL #12
E: 751597.215
N: 5838769.540
R.L. 442.420

- NEW ASPHALT SURFACE OVER EXISTING ROAD
- NEW ROAD PAVEMENT WITH ASPHALT SURFACE FOR PARKING
- MODIFIED ROAD PAVEMENT TO PROTECT TREE ZONES

ISSUE	AMENDMENT	DATE

EVERY CARE HAS BEEN TAKEN TO ENSURE THAT THE INFORMATION SHOWN ON THE DRAWING IS ACCURATE HOWEVER SOME VARIATIONS FROM RECORDS MAY EXIST, AND COMPLETE ACCURACY CANNOT BE GUARANTEED.

PLAN 3

SCALES

DO NOT SCALE THIS DRAWING

WARNING: THE LOCATION OF U/G SERVICES SHOWN IS BASED ON INFORMATION SUPPLIED BY OTHER AUTHORITIES AND SHOULD BE PROVEN ON SITE. ALL WORKS NEAR SERVICES SHALL COMPLY WITH REQUIREMENTS OF THE RELEVANT AUTHORITY.

CITY OF BALLARAT
ERRARD STREET SOUTH
EYRE STREET - DANA STREET

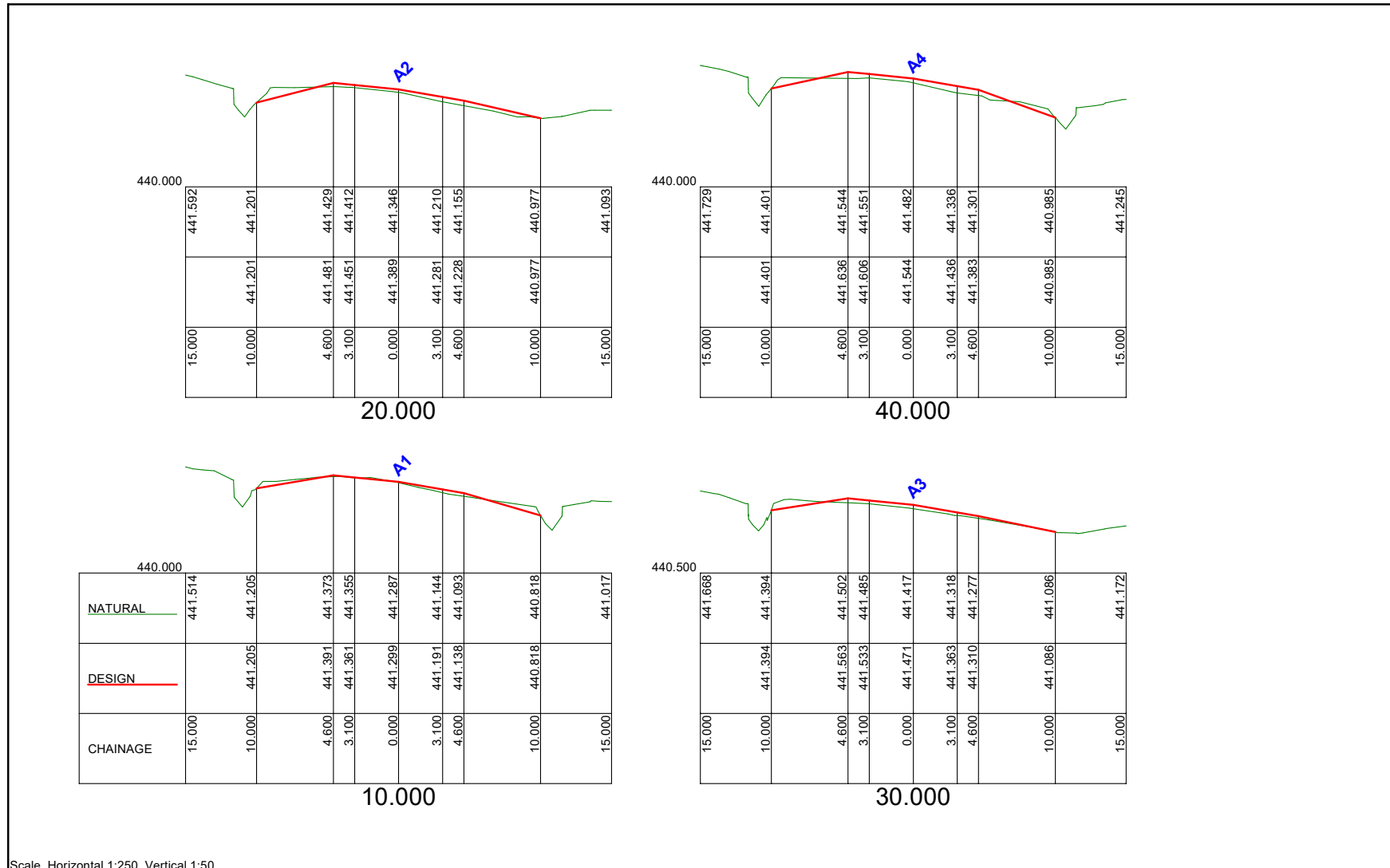
SURVEY:	DATE:
DRAWN:	DATE:
DESIGN:	DATE:
FILES:	DATE:

Pete Bats
TEAM LEADER DESIGN

Naughton
MANAGER INFRASTRUCTURE

CITY OF BALLARAT

DRAWING No. **2018-06-03**
SHEET 3 OF 14



Scale Horizontal 1:250 Vertical 1:50

ISSUE	AMENDMENT	DATE

EVERY CARE HAS BEEN TAKEN TO ENSURE THAT THE INFORMATION SHOWN ON THE DRAWING IS ACCURATE HOWEVER SOME VARIATIONS FROM RECORDS MAY EXIST, AND COMPLETE ACCURACY CANNOT BE GUARANTEED.

CROSS SECTIONS 1

SCALES

DO NOT SCALE THIS DRAWING
 WARNING: THE LOCATION OF U/G SERVICES SHOWN IS BASED ON INFORMATION SUPPLIED BY OTHER AUTHORITIES AND SHOULD BE PROVEN ON SITE. ALL WORKS NEAR SERVICES SHALL COMPLY WITH REQUIREMENTS OF THE RELEVANT AUTHORITY

SURVEY:	DATE:
DRAWN:	DATE:
DESIGN:	DATE:
FILES:	DATE:

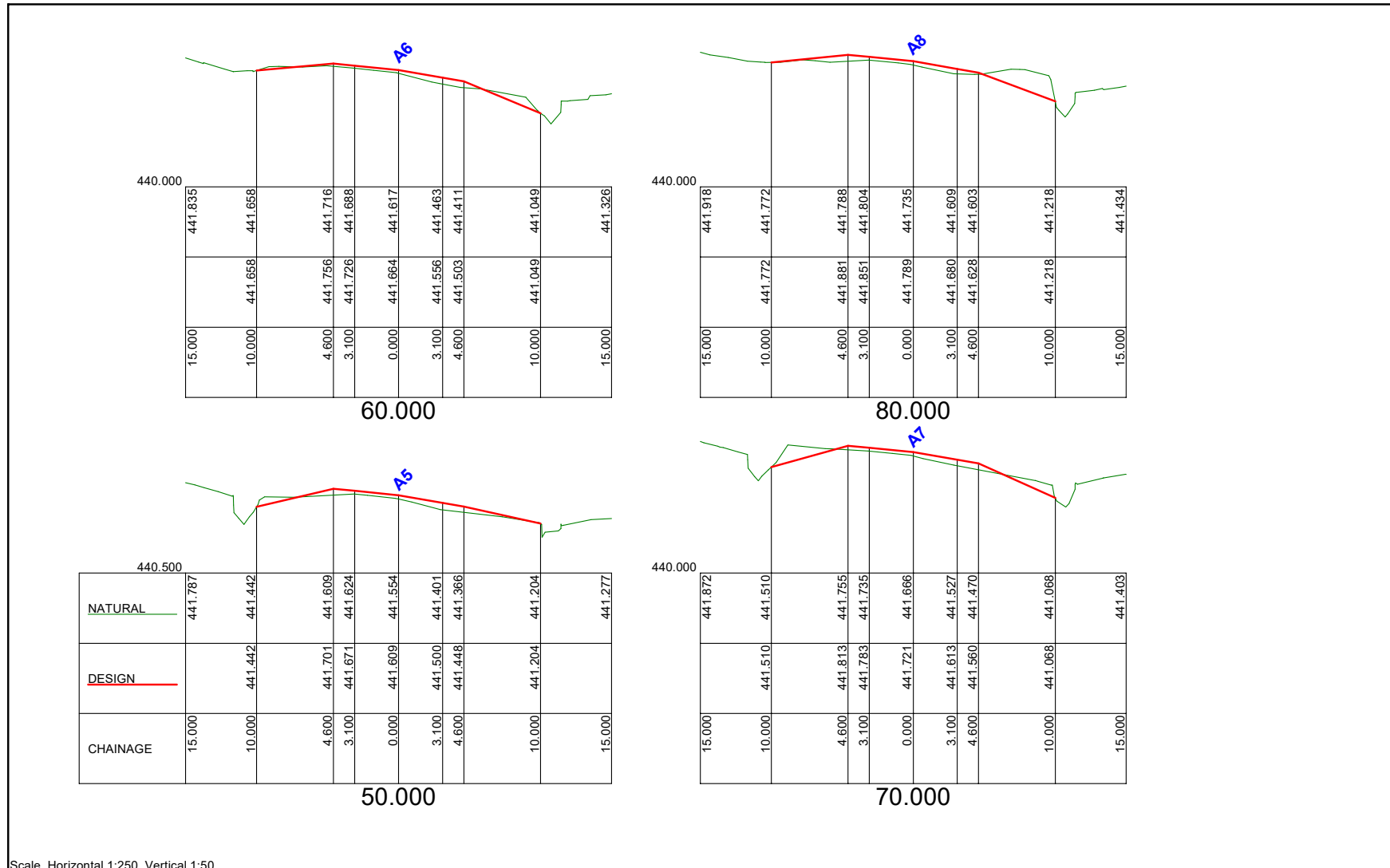
CITY OF BALLARAT ERRARD STREET SOUTH EYRE STREET - DANA STREET

Pete Bats
TEAM LEADER DESIGN

Yougha Nothman
MANAGER INFRASTRUCTURE



DRAWING No.
2018-06-04
SHEET 4 OF 14



Scale Horizontal 1:250 Vertical 1:50

ISSUE	AMENDMENT	DATE

EVERY CARE HAS BEEN TAKEN TO ENSURE THAT THE INFORMATION SHOWN ON THE DRAWING IS ACCURATE HOWEVER SOME VARIATIONS FROM RECORDS MAY EXIST, AND COMPLETE ACCURACY CANNOT BE GUARANTEED.

CROSS SECTIONS 2

SCALES

DO NOT SCALE THIS DRAWING

WARNING: THE LOCATION OF U/G SERVICES SHOWN IS BASED ON INFORMATION SUPPLIED BY OTHER AUTHORITIES AND SHOULD BE PROVEN ON SITE. ALL WORKS NEAR SERVICES SHALL COMPLY WITH REQUIREMENTS OF THE RELEVANT AUTHORITY

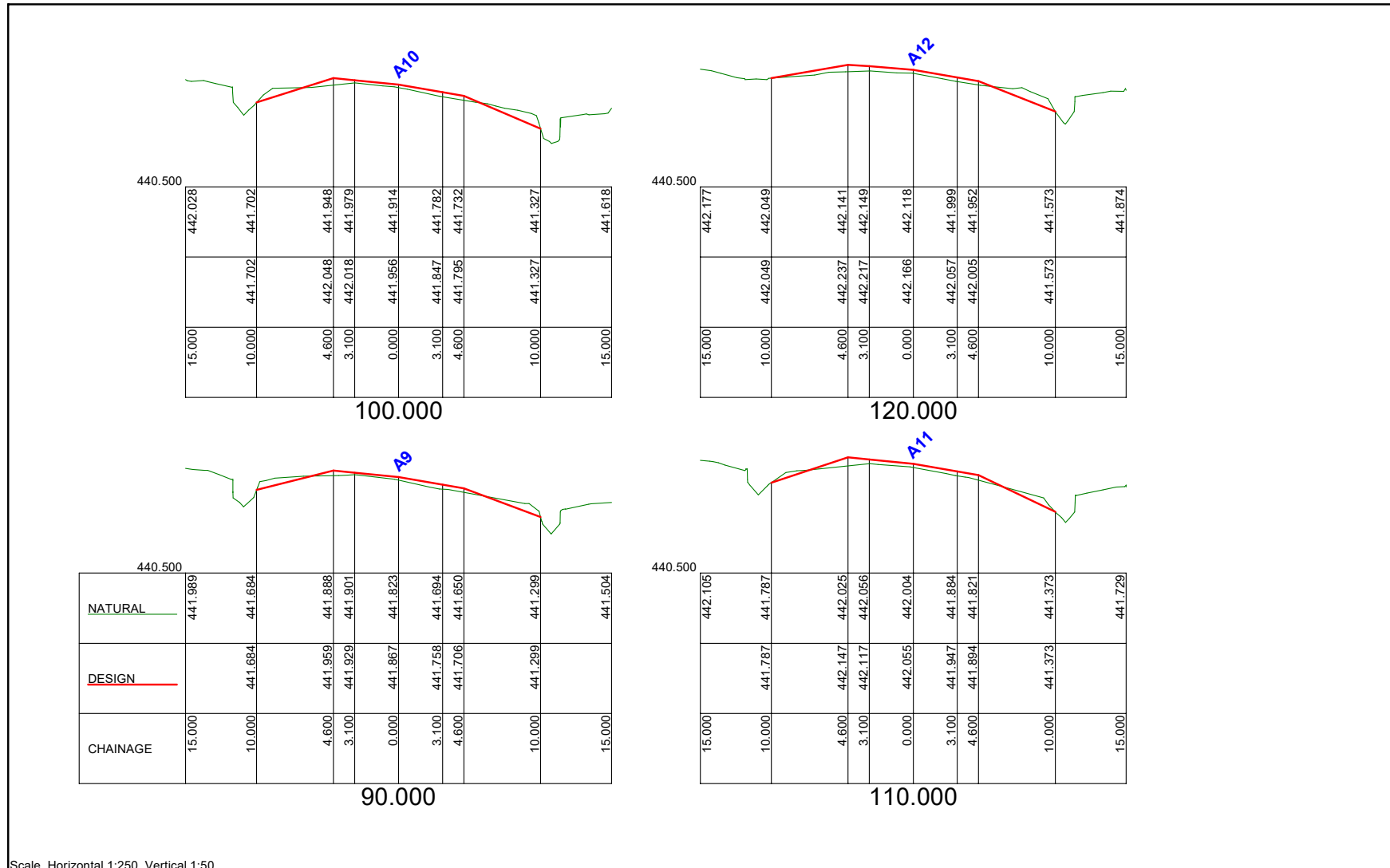
CITY OF BALLARAT
ERRARD STREET SOUTH
EYRE STREET - DANA STREET

SURVEY: _____ DATE: _____
 DRAWN: _____ DATE: _____
 DESIGN: _____ DATE: _____
 FILES: _____

Pete Bats TEAM LEADER DESIGN
Naughton MANAGER INFRASTRUCTURE

CITY OF BALLARAT

DRAWING No. **2018-06-05**
SHEET 5 OF 14



Scale Horizontal 1:250 Vertical 1:50

ISSUE	AMENDMENT	DATE

EVERY CARE HAS BEEN TAKEN TO ENSURE THAT THE INFORMATION SHOWN ON THE DRAWING IS ACCURATE HOWEVER SOME VARIATIONS FROM RECORDS MAY EXIST, AND COMPLETE ACCURACY CANNOT BE GUARANTEED.

CROSS SECTIONS 3

SCALES

DO NOT SCALE THIS DRAWING
WARNING: THE LOCATION OF U/G SERVICES SHOWN IS BASED ON INFORMATION SUPPLIED BY OTHER AUTHORITIES AND SHOULD BE PROVEN ON SITE. ALL WORKS NEAR SERVICES SHALL COMPLY WITH REQUIREMENTS OF THE RELEVANT AUTHORITY

SURVEY:	DATE:
DRAWN:	DATE:
DESIGN:	DATE:
FILES:	DATE:

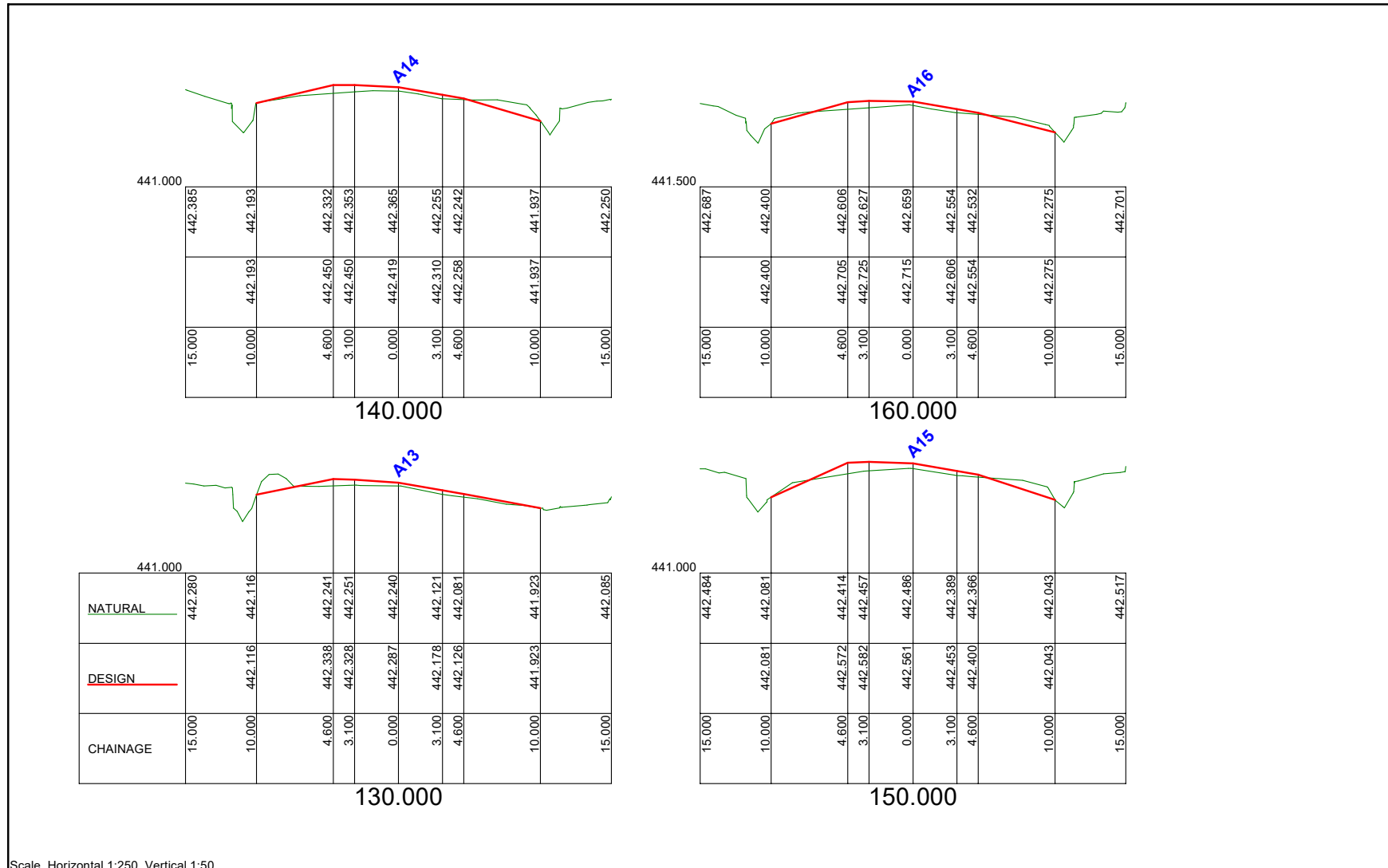
CITY OF BALLARAT ERRARD STREET SOUTH EYRE STREET - DANA STREET

Pete Bates
TEAM LEADER DESIGN

Naughton
MANAGER INFRASTRUCTURE



DRAWING No.
2018-06-06
SHEET 6 OF 14



Scale Horizontal 1:250 Vertical 1:50

ISSUE	AMENDMENT	DATE

EVERY CARE HAS BEEN TAKEN TO ENSURE THAT THE INFORMATION SHOWN ON THE DRAWING IS ACCURATE HOWEVER SOME VARIATIONS FROM RECORDS MAY EXIST, AND COMPLETE ACCURACY CANNOT BE GUARANTEED.

CROSS SECTIONS 4

SCALES

DO NOT SCALE THIS DRAWING
 WARNING: THE LOCATION OF U/G SERVICES SHOWN IS BASED ON INFORMATION SUPPLIED BY OTHER AUTHORITIES AND SHOULD BE PROVEN ON SITE. ALL WORKS NEAR SERVICES SHALL COMPLY WITH REQUIREMENTS OF THE RELEVANT AUTHORITY

SURVEY:	DATE:
DRAWN:	DATE:
DESIGN:	DATE:
FILES:	DATE:

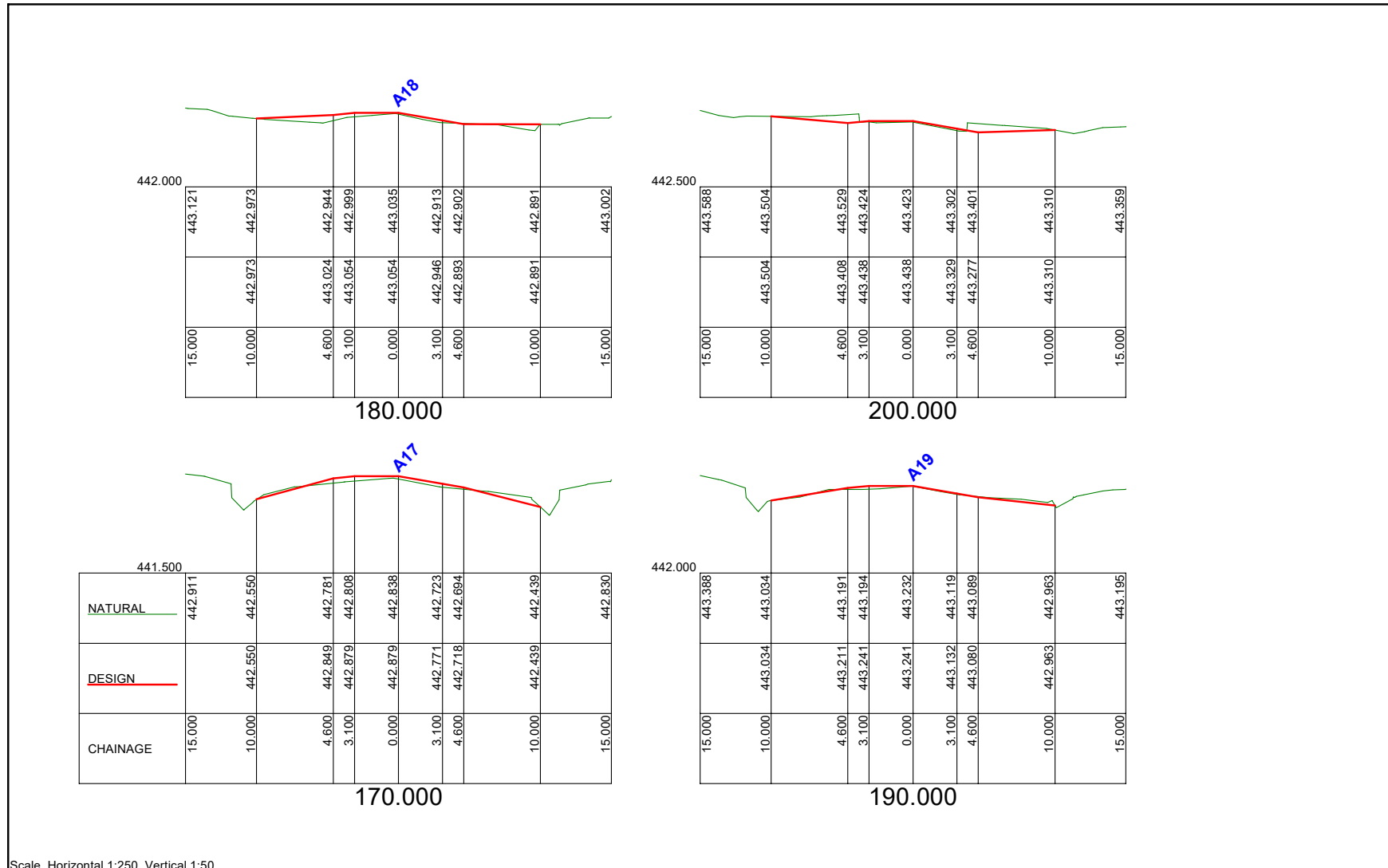
CITY OF BALLARAT
ERRARD STREET SOUTH
EYRE STREET - DANA STREET



Pete Bats
 TEAM LEADER DESIGN

Naugh Nothman
 MANAGER INFRASTRUCTURE

DRAWING No.	2018-06-07
SHEET	7 OF 14



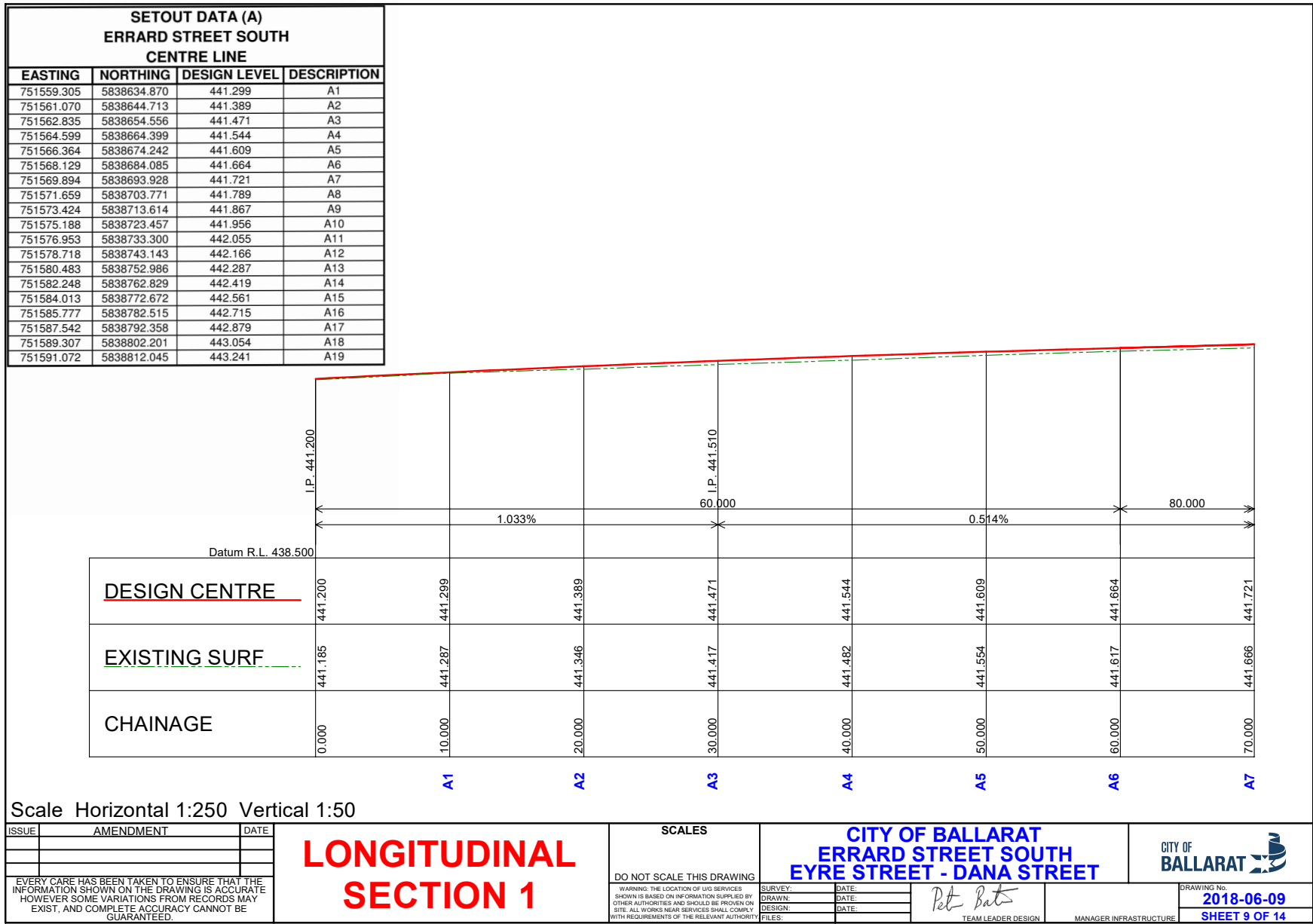
Scale Horizontal 1:250 Vertical 1:50

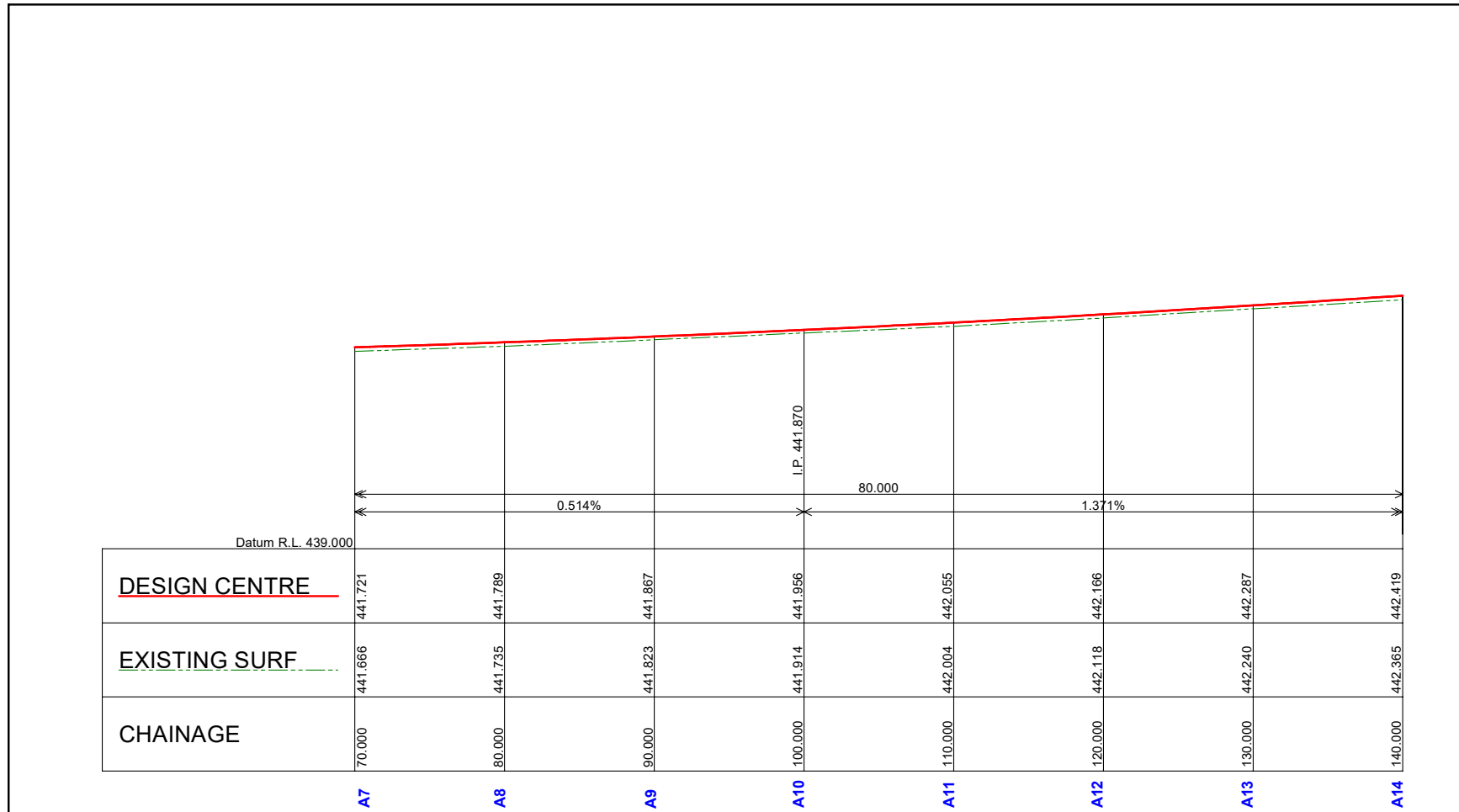
ISSUE	AMENDMENT	DATE

EVERY CARE HAS BEEN TAKEN TO ENSURE THAT THE INFORMATION SHOWN ON THE DRAWING IS ACCURATE HOWEVER SOME VARIATIONS FROM RECORDS MAY EXIST, AND COMPLETE ACCURACY CANNOT BE GUARANTEED.

CROSS SECTIONS 5

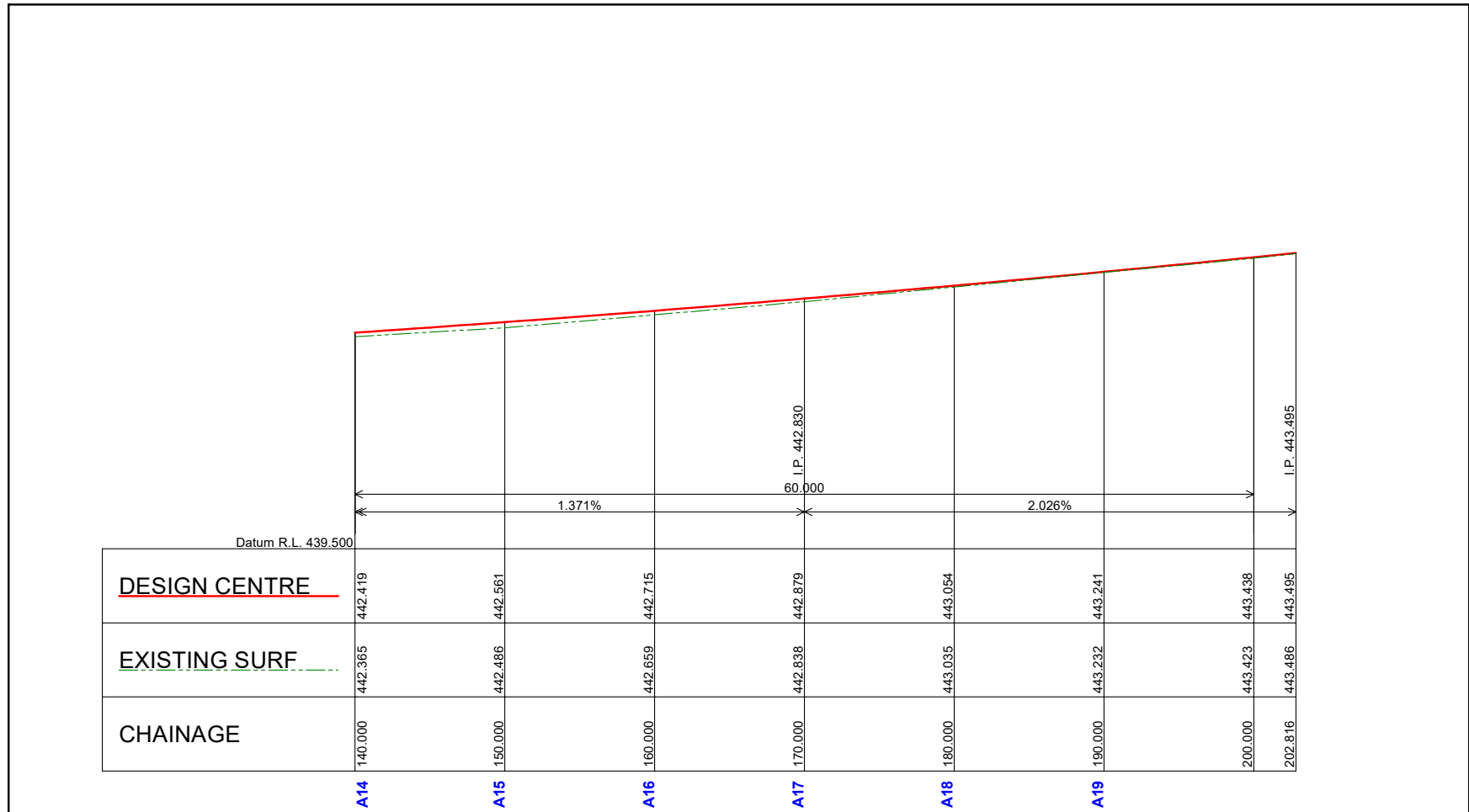
<p>SCALES</p> <p>DO NOT SCALE THIS DRAWING</p> <p>WARNING: THE LOCATION OF U/G SERVICES SHOWN IS BASED ON INFORMATION SUPPLIED BY OTHER AUTHORITIES AND SHOULD BE PROVEN ON SITE. ALL WORKS NEAR SERVICES SHALL COMPLY WITH REQUIREMENTS OF THE RELEVANT AUTHORITY</p>		<p>CITY OF BALLARAT</p> <p>ERRARD STREET SOUTH</p> <p>EYRE STREET - DANA STREET</p>		<p>CITY OF BALLARAT</p>	
<p>SURVEY: _____ DATE: _____</p> <p>DRAWN: _____ DATE: _____</p> <p>DESIGN: _____ DATE: _____</p> <p>FILES: _____</p>		<p><i>Pete Batts</i></p> <p>TEAM LEADER DESIGN</p>		<p><i>Youghan North</i></p> <p>MANAGER INFRASTRUCTURE</p>	
<p>DRAWING No. 2018-06-08</p> <p>SHEET 8 OF 14</p>				<p> </p>	





Scale Horizontal 1:250 Vertical 1:50

<table border="1"> <thead> <tr> <th>ISSUE</th> <th>AMENDMENT</th> <th>DATE</th> </tr> </thead> <tbody> <tr> <td> </td> <td> </td> <td> </td> </tr> <tr> <td> </td> <td> </td> <td> </td> </tr> </tbody> </table>	ISSUE	AMENDMENT	DATE							<h1 style="color: red;">LONGITUDINAL SECTION 2</h1>	<p>SCALES</p> <p>DO NOT SCALE THIS DRAWING</p>	<p>CITY OF BALLARAT ERRARD STREET SOUTH EYRE STREET - DANA STREET</p>	
	ISSUE	AMENDMENT	DATE										
<p>EVERY CARE HAS BEEN TAKEN TO ENSURE THAT THE INFORMATION SHOWN ON THE DRAWING IS ACCURATE HOWEVER SOME VARIATIONS FROM RECORDS MAY EXIST, AND COMPLETE ACCURACY CANNOT BE GUARANTEED.</p>	<p>WARNING: THE LOCATION OF U/G SERVICES SHOWN IS BASED ON INFORMATION SUPPLIED BY OTHER AUTHORITIES AND SHOULD BE PROVEN ON SITE. ALL WORKS NEAR SERVICES SHALL COMPLY WITH REQUIREMENTS OF THE RELEVANT AUTHORITY.</p>	<table border="1"> <tr> <td>SURVEY:</td> <td>DATE:</td> </tr> <tr> <td>DRAWN:</td> <td>DATE:</td> </tr> <tr> <td>DESIGN:</td> <td>DATE:</td> </tr> <tr> <td>FILES:</td> <td>DATE:</td> </tr> </table>	SURVEY:	DATE:	DRAWN:	DATE:	DESIGN:	DATE:	FILES:	DATE:	<p><i>Pete Bats</i> TEAM LEADER DESIGN</p>	<p>DRAWING No. 2018-06-10 SHEET 10 OF 14</p>	
SURVEY:	DATE:												
DRAWN:	DATE:												
DESIGN:	DATE:												
FILES:	DATE:												



Type text here

Scale Horizontal 1:250 Vertical 1:50

ISSUE	AMENDMENT	DATE

EVERY CARE HAS BEEN TAKEN TO ENSURE THAT THE INFORMATION SHOWN ON THE DRAWING IS ACCURATE HOWEVER SOME VARIATIONS FROM RECORDS MAY EXIST, AND COMPLETE ACCURACY CANNOT BE GUARANTEED.

LONGITUDINAL SECTION 3

SCALES

DO NOT SCALE THIS DRAWING

WARNING: THE LOCATION OF U/G SERVICES SHOWN IS BASED ON INFORMATION SUPPLIED BY OTHER AUTHORITIES AND SHOULD BE PROVEN ON SITE. ALL WORKS NEAR SERVICES SHALL COMPLY WITH REQUIREMENTS OF THE RELEVANT AUTHORITY

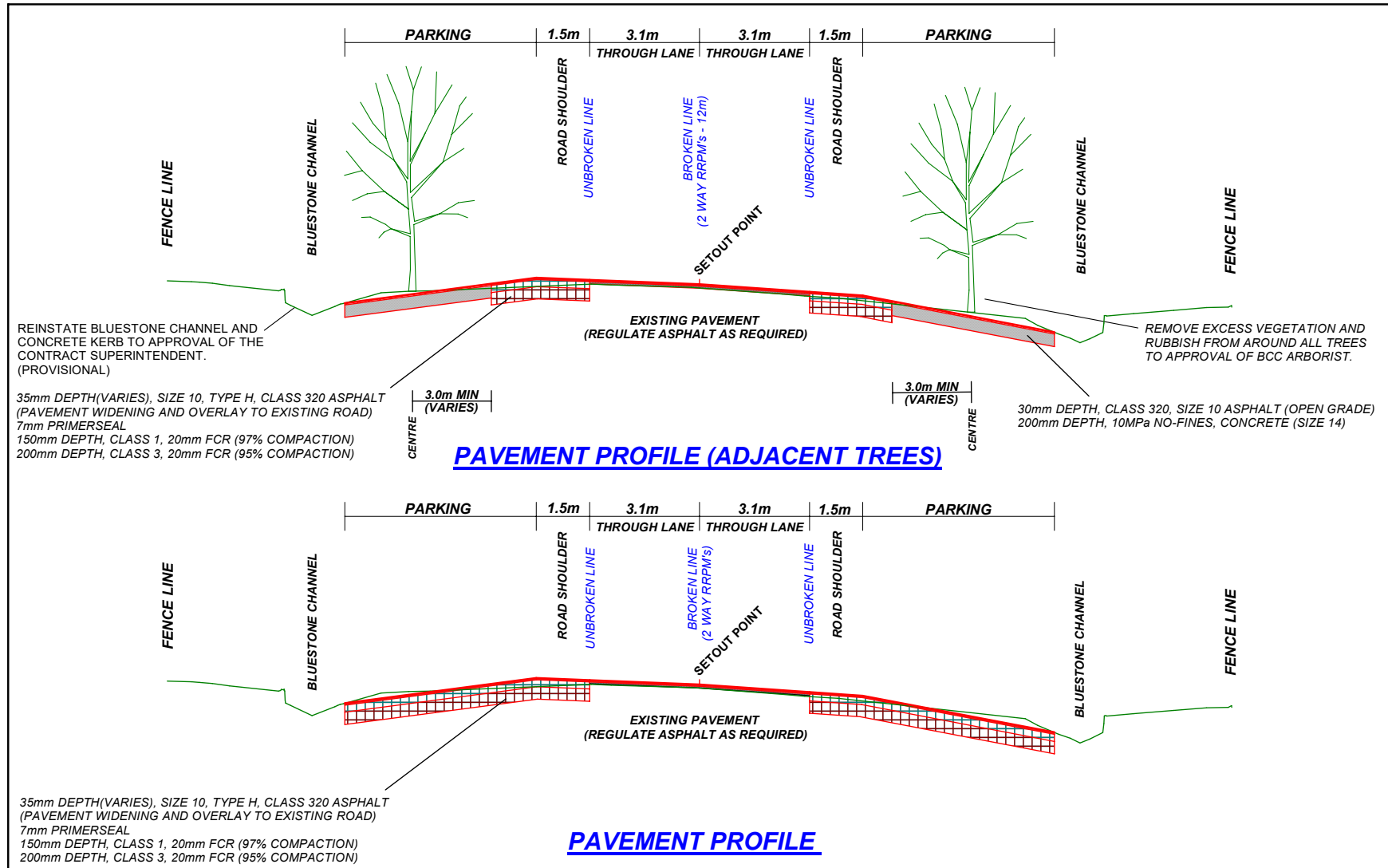
CITY OF BALLARAT
ERRARD STREET SOUTH
EYRE STREET - DANA STREET

SURVEY: _____ DATE: _____
 DRAWN: _____ DATE: _____
 DESIGN: _____ DATE: _____
 FILES: _____

Pete Bats TEAM LEADER DESIGN
Naughton MANAGER INFRASTRUCTURE

CITY OF BALLARAT

DRAWING No. **2018-06-11**
SHEET 11 OF 14



ISSUE	AMENDMENT	DATE

EVERY CARE HAS BEEN TAKEN TO ENSURE THAT THE INFORMATION SHOWN ON THE DRAWING IS ACCURATE HOWEVER SOME VARIATIONS FROM RECORDS MAY EXIST, AND COMPLETE ACCURACY CANNOT BE GUARANTEED.

TYPICAL SECTIONS

SCALES

DO NOT SCALE THIS DRAWING

WARNING: THE LOCATION OF U/G SERVICES SHOWN IS BASED ON INFORMATION SUPPLIED BY OTHER AUTHORITIES AND SHOULD BE PROVEN ON SITE. ALL WORKS NEAR SERVICES SHALL COMPLY WITH REQUIREMENTS OF THE RELEVANT AUTHORITY

CITY OF BALLARAT
ERRARD STREET
EYRE STREET - DANA STREET

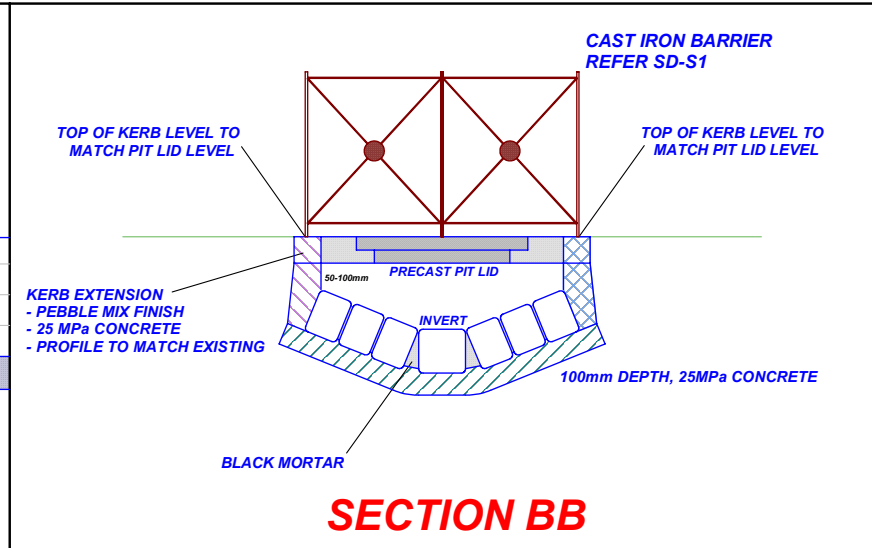
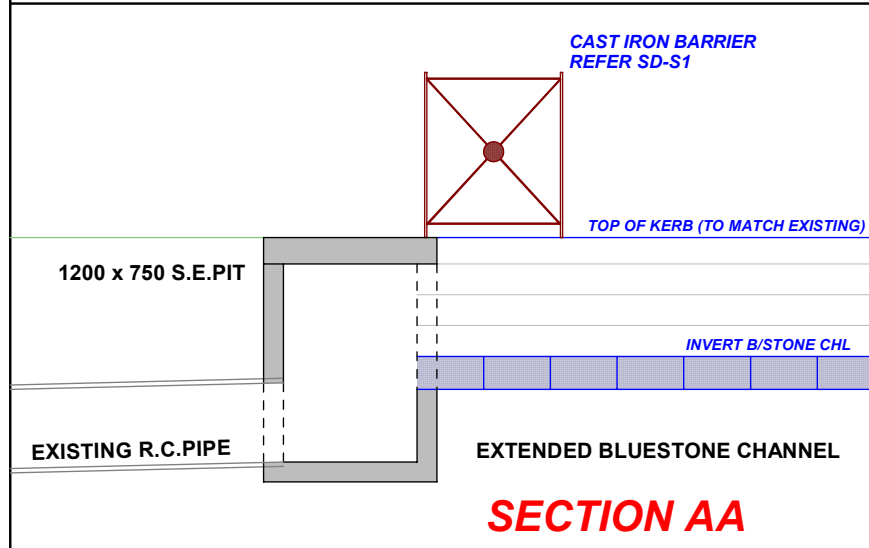
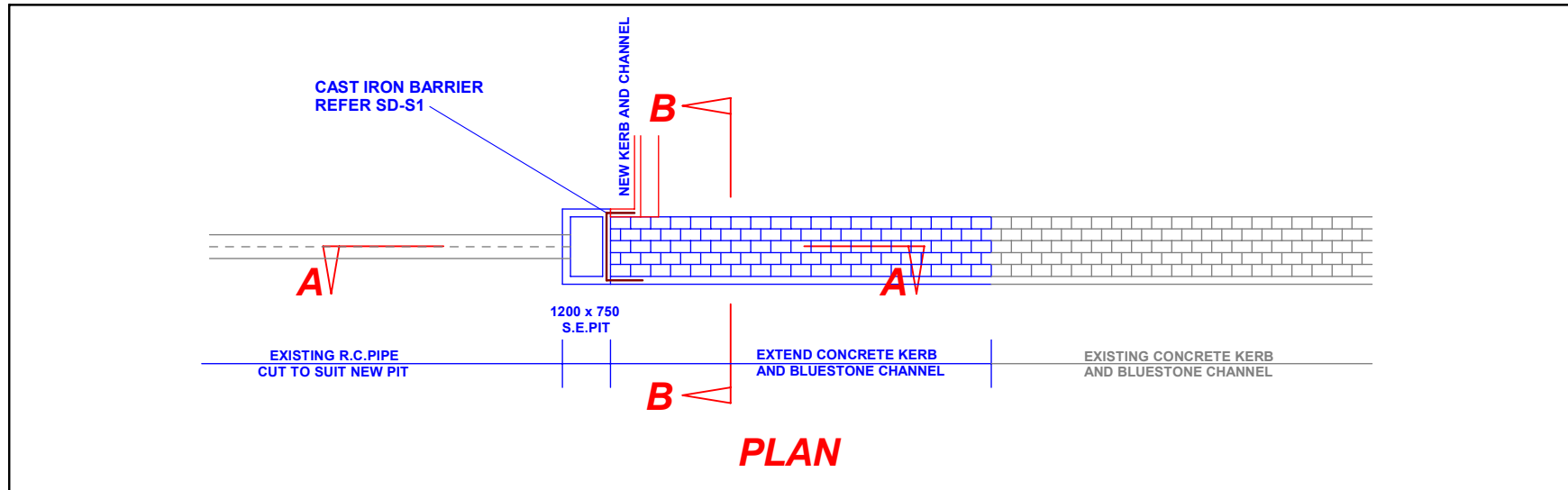
SURVEY: DATE: _____
DRAWN: DATE: _____
DESIGN: DATE: _____
FILES: _____

Pete Bats
TEAM LEADER DESIGN

Vaughn Weston
MANAGER INFRASTRUCTURE

CITY OF BALLARAT

DRAWING No. **2018-06-12**
SHEET 12 OF 14



ISSUE	AMENDMENT	DATE

EVERY CARE HAS BEEN TAKEN TO ENSURE THAT THE INFORMATION SHOWN ON THE DRAWING IS ACCURATE HOWEVER SOME VARIATIONS FROM RECORDS MAY EXIST, AND COMPLETE ACCURACY CANNOT BE GUARANTEED.

TYPICAL DETAILS 1

SCALES

DO NOT SCALE THIS DRAWING

WARNING: THE LOCATION OF U/G SERVICES SHOWN IS BASED ON INFORMATION SUPPLIED BY OTHER AUTHORITIES AND SHOULD BE PROVEN ON SITE. ALL WORKS NEAR SERVICES SHALL COMPLY WITH REQUIREMENTS OF THE RELEVANT AUTHORITY

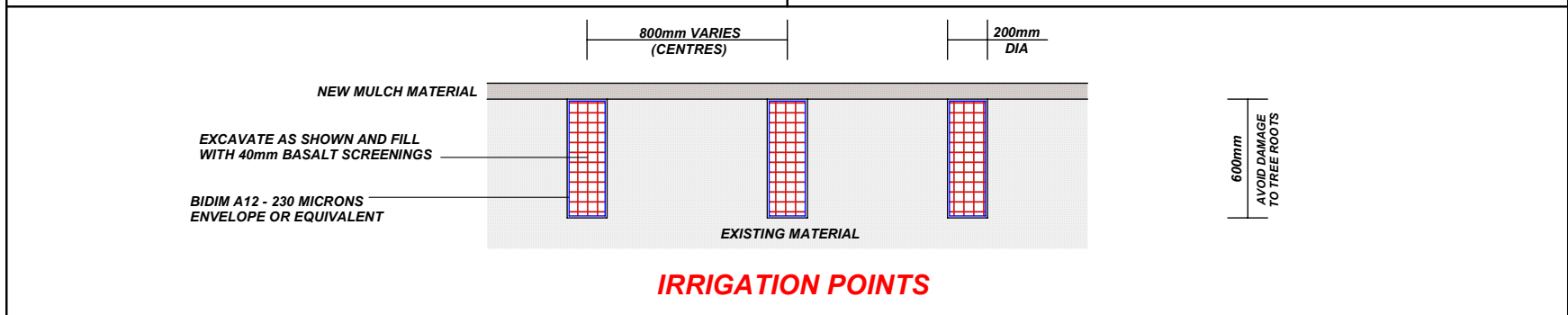
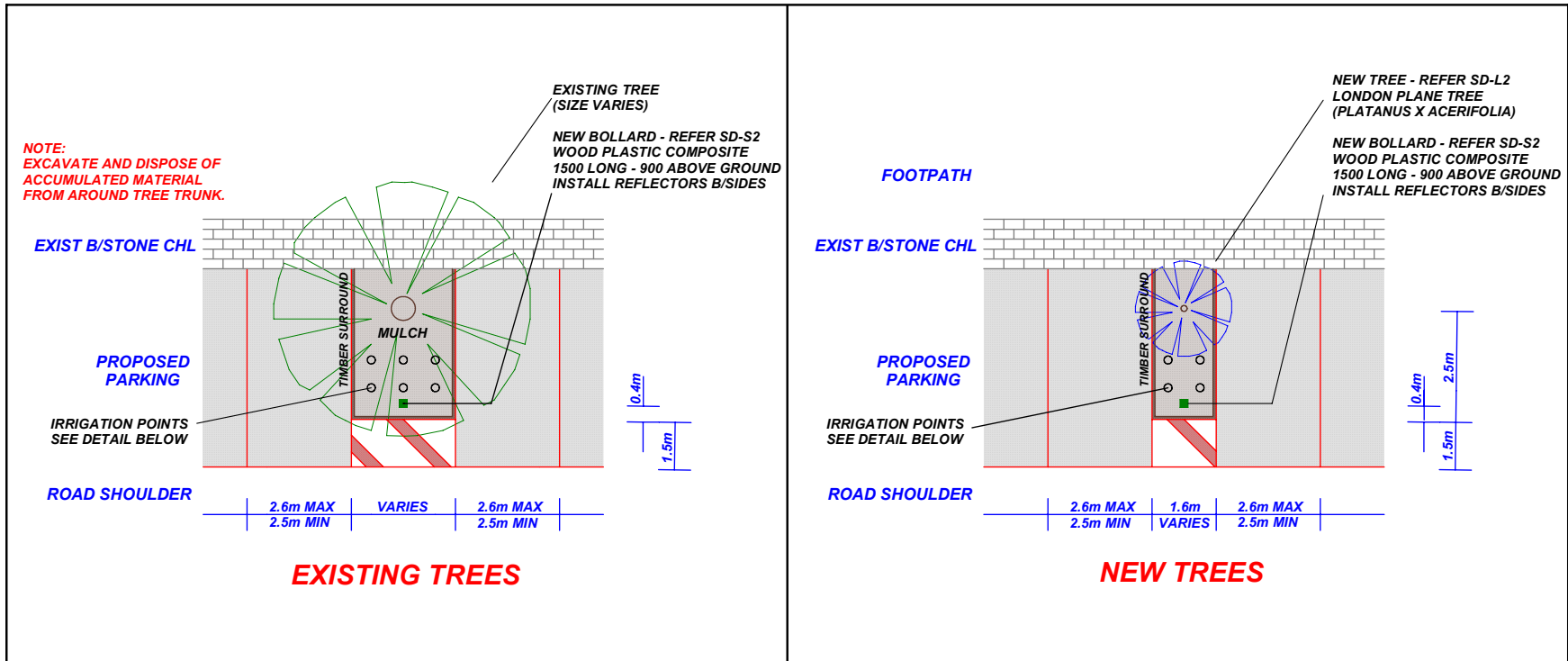
CITY OF BALLARAT
ERRARD STREET SOUTH
EYRE STREET - DANA STREET

SURVEY: RB-RH DATE: SEPT 14
 DRAWN: M.N.W DATE: SEPT 14
 DESIGN: M.N.W DATE: SEPT 14
 FILES:

Pete Batts TEAM LEADER DESIGN
Naughan North MANAGER INFRASTRUCTURE

CITY OF BALLARAT

DRAWING No. **2018-06-13**
SHEET 13 OF 14



ISSUE	AMENDMENT	DATE	TYPICAL DETAILS 2	SCALES	CITY OF BALLARAT ERRARD STREET SOUTH EYRE STREET - DANA STREET	CITY OF BALLARAT
EVERY CARE HAS BEEN TAKEN TO ENSURE THAT THE INFORMATION SHOWN ON THE DRAWING IS ACCURATE HOWEVER SOME VARIATIONS FROM RECORDS MAY EXIST, AND COMPLETE ACCURACY CANNOT BE GUARANTEED.			DO NOT SCALE THIS DRAWING WARNING: THE LOCATION OF U/G SERVICES SHOWN IS BASED ON INFORMATION SUPPLIED BY OTHER AUTHORITIES AND SHOULD BE PROVEN ON SITE. ALL WORKS NEAR SERVICES SHALL COMPLY WITH REQUIREMENTS OF THE RELEVANT AUTHORITY.	SURVEY: RH DRAWN: MNW DESIGN: MNW FILES: DAW/DE	DATE: SEPT 14 DATE: SEPT 14 DATE: SEPT 14	DRAWING No. 2018-06-14 SHEET 14 OF 14

9.6. TENDER 2020/21-48 ALBION STREET

Division: Infrastructure & Environment
Director: Bridget Wetherall
Author/Position: Robin Hand – Contracts Administration Officer

PURPOSE

1. To award Contract 2020/21-48 'Albion Street - Road Reconstruction (Birdwood Avenue to Walker Street)' to Fulton Hogan Industries Pty Ltd for a total tendered price of \$449,532.70 (ex GST).
2. The scope of this contract involves the reconstruction of Albion Street, Sebastopol between Birdwood Avenue and Walker Street. This project will see the existing shoulders constructed, new concrete kerb & channel and a new road surface.

BACKGROUND

3. Albion Street, Sebastopol between Birdwood Avenue and Walker Street is a local access road servicing more than 23 residential properties.
4. This section of Albion Street has unsealed road shoulders with a narrow carriageway and dilapidated concrete kerb & channel which causes localised storm water ponding.
5. The project involves several components of work which were identified during the design stage including the following:
 - earthworks;
 - drainage construction;
 - sealing of unsealed shoulders;
 - asphalt road surfacing;
 - kerb and channel reconstruction;
 - fully kerbed intersection at Walker Street;
 - footpath & kerb ramp construction;
 - lawn nature strip reinstatement;
 - line marking;
 - raised pavement markers;
 - signage, and ancillary works.
6. The prioritisation of this project and the extent of works was determined by using a weighted scoring methodology. This weighting is based off specific scoring criteria as set out below:
 - Sustainable Service - Asset Management Plan requirement (whole of life), requirement for urgent treatment, service level not up to standard for application;
 - Safety - Safety hazard reduction;
 - Financial benefit - Reduced costs, return on investment, generates revenue;
 - Hierarchy Level - Level of Importance in network;
 - Community Benefit - Improved local community equity, promotes sustainable economic benefit for the community, satisfies ratepayer initiative, enhances streetscape.

This project was one of many that received high weightings and as such was placed on the 2020/21 Capital Works Program.

KEY MATTERS

7. Ten (10) tender submissions were received.
8. This project is being funded from the 2020/21 Capital Works Program.

OFFICER RECOMMENDATION

9. That Council:

9.1 Enter into contract number 2020/21-48 'Albion Street - Road Reconstruction (Birdwood Avenue to Walker Street)' to Fulton Hogan Industries Pty Ltd for a total tendered price of \$449,532.70 (ex GST).

9.2 Delegate to the Chief Executive Officer the authority to execute the associated contract on behalf of Council.

ATTACHMENTS

1. Governance Review [9.6.1 - 2 pages]
2. Design Plans - For Tender Purposes Signed [9.6.2 - 13 pages]

ALIGNMENT WITH COUNCIL VISION, COUNCIL PLAN, STRATEGIES AND POLICIES

1. This report supports the Council Plan goals of liveability and sustainability by upgrading Council's Infrastructure and Assets throughout the municipal road network to provide safer passage for all affected users.

COMMUNITY IMPACT

2. The City of Ballarat has a charter to serve its local community. This project is providing the community with much needed upgrades to Council assets which will enable the users to have greater ease of vehicular and pedestrian access. This enhances safety for the residents and wider community.

CLIMATE EMERGENCY AND ENVIRONMENTAL SUSTAINABILITY IMPLICATIONS

3. There will not be any significant environmental implications resulting from this project. Environmental controls will be in place for the duration of the project. The recommended tenderer has the appropriate Environmental Management System to be able to cater for any environmental issues that may result during the construction of the project.

ECONOMIC SUSTAINABILITY IMPLICATIONS

4. The construction of this project will see Fulton Hogan Industries Pty Ltd responsible for maintaining six (6) current full-time local jobs over the period of the project along with ancillary employment from material suppliers and professional services.
5. Approximately 100% (\$449,532.70) of the total project value will utilise labour, materials, plant and equipment sourced from within the defined group of local municipalities.

FINANCIAL IMPLICATIONS

6. The tender price is \$449,532.70 (ex GST) which includes a provisional sum of \$38,000.00 approx. built into the contract for contingencies. There is \$654,000.00 allocated from the 2020/21 Capital Works Program for the construction of this project.

LEGAL AND RISK CONSIDERATIONS

7. The project has been designed and will be constructed in accordance with all relevant design standards. The contract provides for management of traffic, pedestrians, property and environment during the delivery of the works, with stringent Occupational Health and Safety requirements. The recommended contractor in this instance has appropriate OHS systems operable to meet the requirements of this project.

HUMAN RIGHTS CONSIDERATIONS

8. It is considered that this report does not impact on any human rights identified in the *Charter of Human Rights and Responsibilities Act 2006*. It is further considered that

the works will enhance Freedom of Movement within the area in which a person may live.

COMMUNITY CONSULTATION AND ENGAGEMENT

9. Consultation with road users affected by this project has been undertaken by Council's Infrastructure & Environment Unit.
10. The Chief Executive Officer and the Communications and Marketing Unit of Council will participate in the media and communications associated with the delivery of works under this contract.

CONFLICTS OF INTEREST THAT HAVE ARISEN IN PREPARATION OF THE REPORT

11. Council Officers affirm that no direct or indirect interests need to be declared in relation to the matter of this Report.

FOR TENDER PURPOSES ONLY



ROAD REHABILITATION ALBION STREET BIRDWOOD AVE - WALKER ST

DRAWING No: 2020-53
CONTRACT No: 2020/21-48

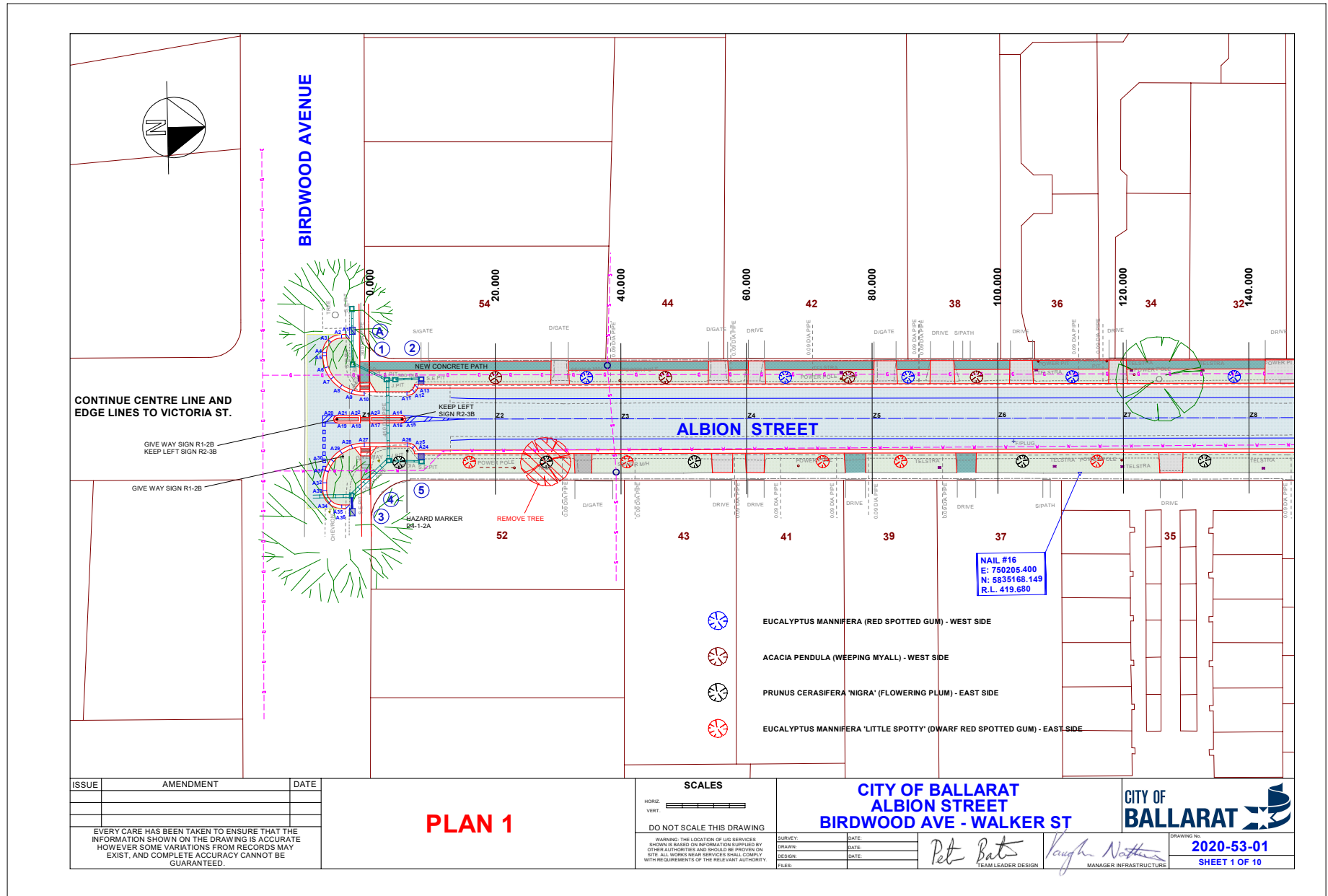
2020-53	TITLE PAGE
2020-53-01	PLAN 1
2020-53-02	PLAN 2
2020-53-03	CROSS SECTIONS 1
2020-53-04	CROSS SECTIONS 2
2020-53-05	CROSS SECTIONS 3
2020-53-06	PIT SCHEDULE
2020-53-07	LONG SECTION 1
2020-53-08	LONG SECTION 2
2020-53-09	TYPICAL SECTION
2020-53-10	SETOUT DATA

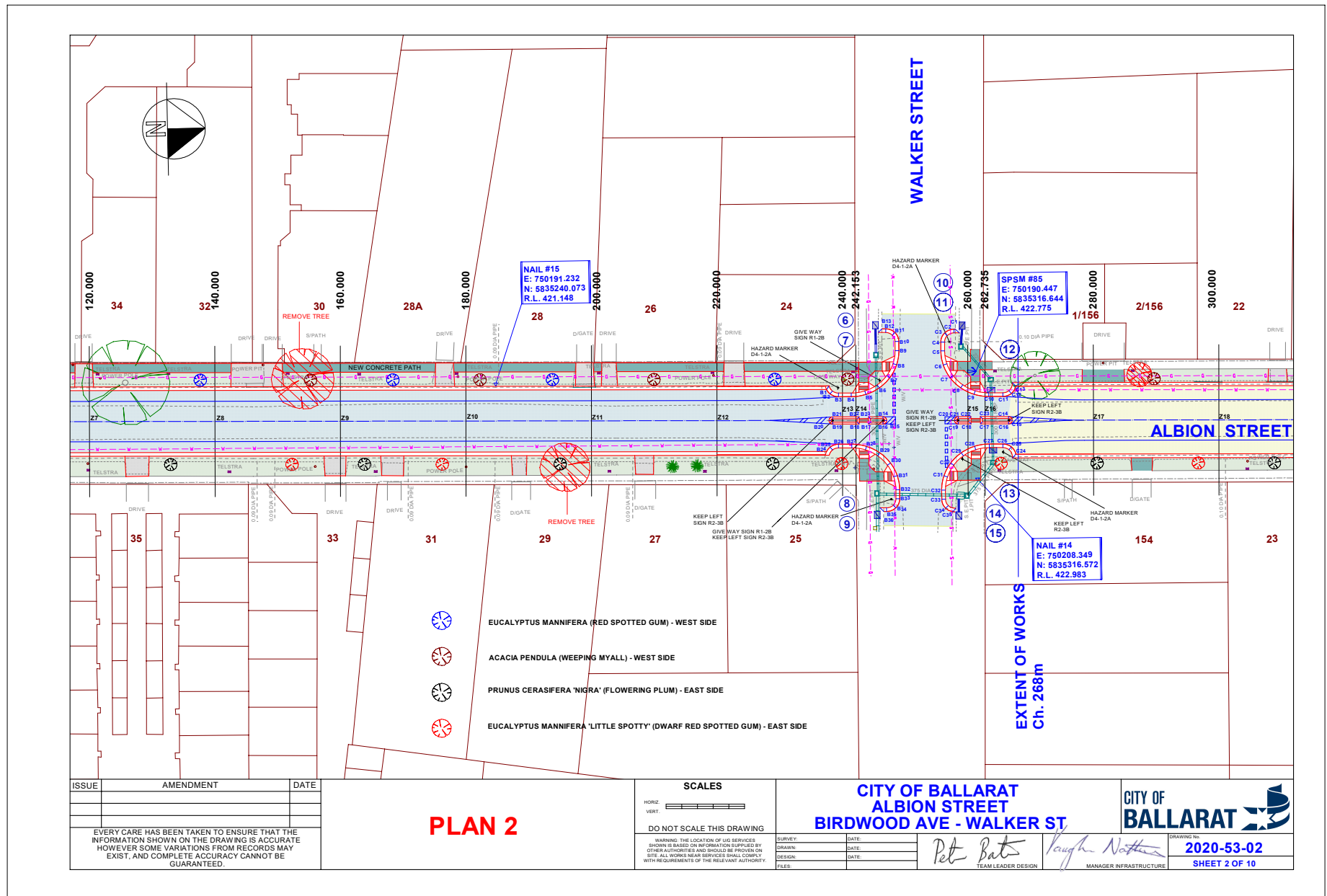
CONTRACT DRAWINGS

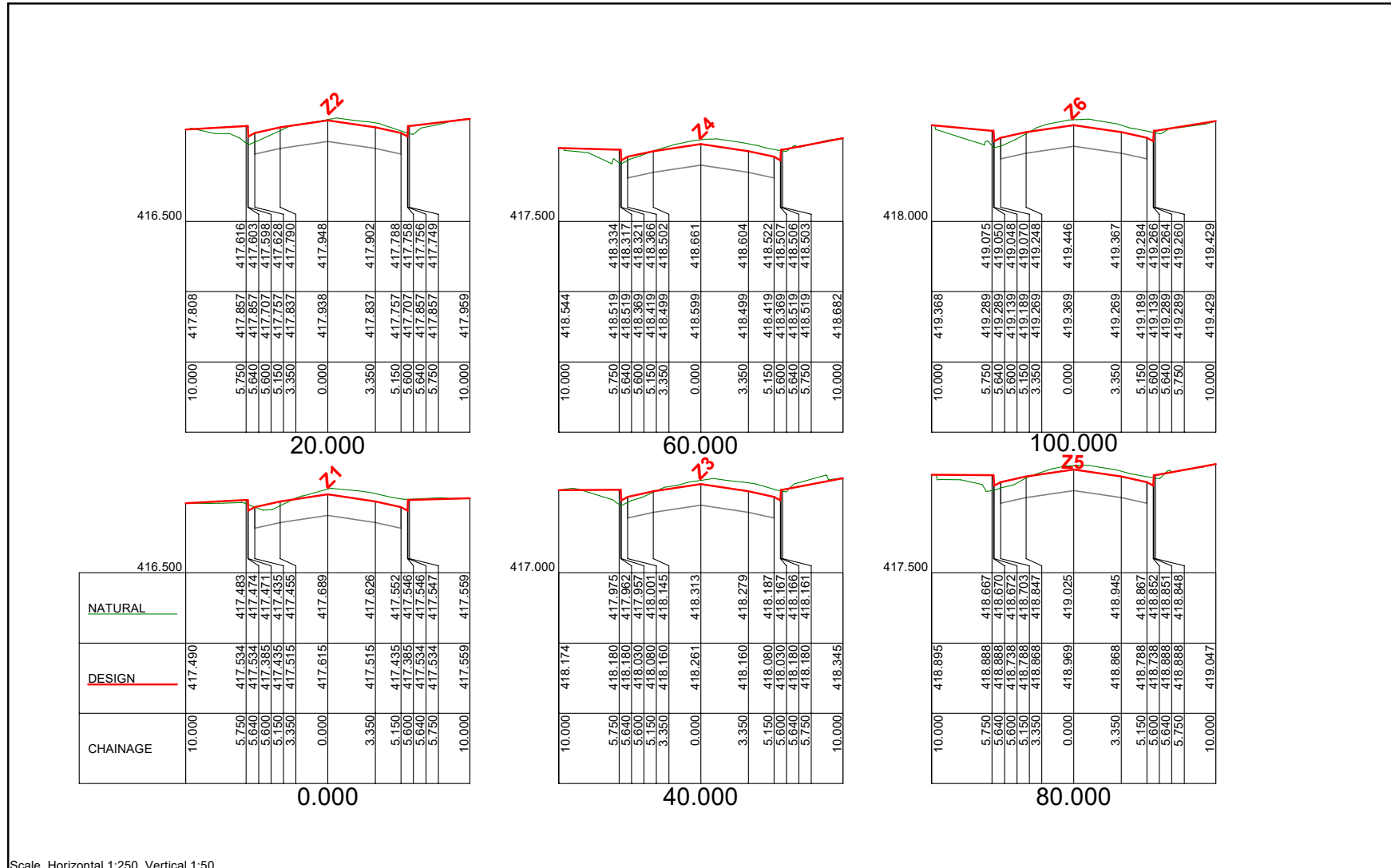
LOCATION OF WORKS



LOCALITY PLAN







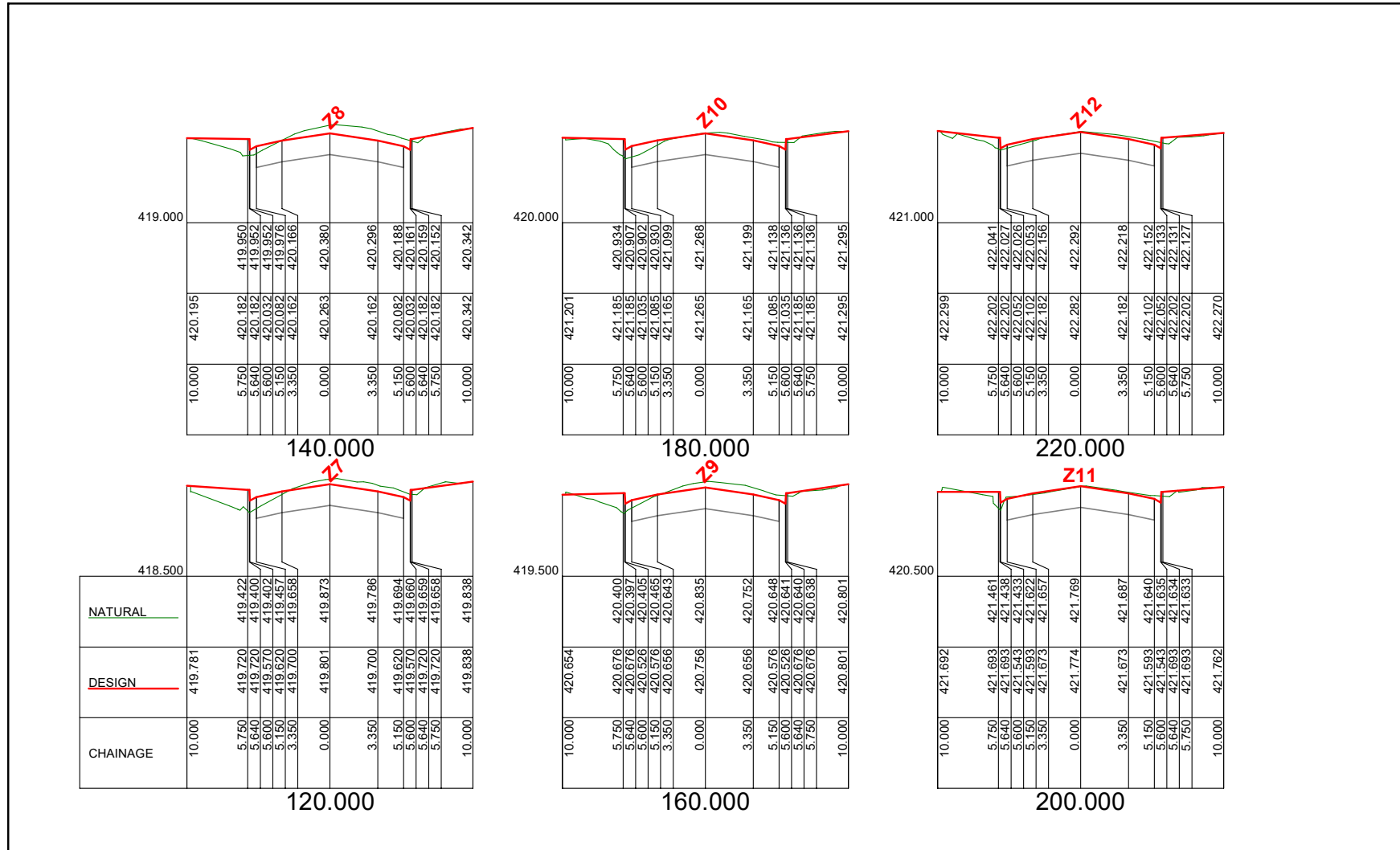
Scale Horizontal 1:250 Vertical 1:50

ISSUE	AMENDMENT	DATE

EVERY CARE HAS BEEN TAKEN TO ENSURE THAT THE INFORMATION SHOWN ON THE DRAWING IS ACCURATE HOWEVER SOME VARIATIONS FROM RECORDS MAY EXIST, AND COMPLETE ACCURACY CANNOT BE GUARANTEED.

CROSS SECTIONS 1

SCALES DO NOT SCALE THIS DRAWING <small>WARNING: THE LOCATION OF U/G SERVICES SHOWN IS BASED ON INFORMATION SUPPLIED BY OTHER AUTHORITIES AND SHOULD BE PROVEN ON SITE. ALL WORKS NEAR SERVICES SHALL COMPLY WITH REQUIREMENTS OF THE RELEVANT AUTHORITY</small>	CITY OF BALLARAT ALBION STREET BIRDWOOD AVE - WALKER ST	CITY OF BALLARAT
<small>SURVEY: DATE: DRAWN: DATE: DESIGN: DATE: FILES:</small>	TEAM LEADER DESIGN	<small>MANAGER INFRASTRUCTURE</small>
DRAWING No. 2020-53-03		SHEET 3 OF 10



Scale Horizontal 1:250 Vertical 1:50

ISSUE	AMENDMENT	DATE

EVERY CARE HAS BEEN TAKEN TO ENSURE THAT THE INFORMATION SHOWN ON THE DRAWING IS ACCURATE HOWEVER SOME VARIATIONS FROM RECORDS MAY EXIST, AND COMPLETE ACCURACY CANNOT BE GUARANTEED.

CROSS SECTIONS 2

SCALES
DO NOT SCALE THIS DRAWING

WARNING: THE LOCATION OF U/G SERVICES SHOWN IS BASED ON INFORMATION SUPPLIED BY OTHER AUTHORITIES AND SHOULD BE PROVEN ON SITE. ALL WORKS NEAR SERVICES SHALL COMPLY WITH REQUIREMENTS OF THE RELEVANT AUTHORITY.

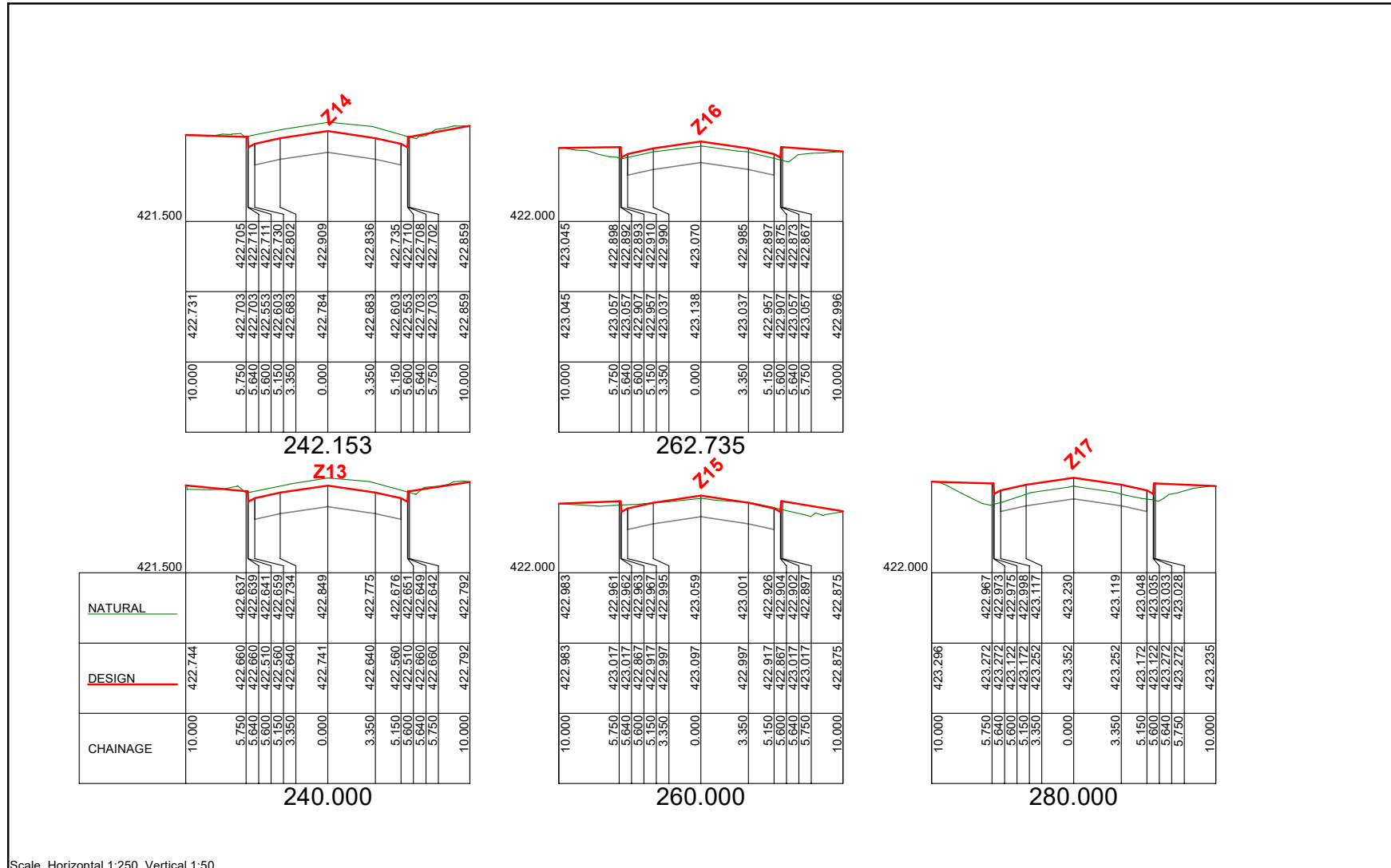
CITY OF BALLARAT
ALBION STREET
BIRDWOOD AVE - WALKER ST



SURVEY: DATE: DRAWN: DATE: DESIGN: DATE: FILES:

Pete Bats TEAM LEADER DESIGN
Naughton MANAGER INFRASTRUCTURE

DRAWING No.
2020-53-04
SHEET 4 OF 10



Scale Horizontal 1:250 Vertical 1:50

ISSUE	AMENDMENT	DATE

EVERY CARE HAS BEEN TAKEN TO ENSURE THAT THE INFORMATION SHOWN ON THE DRAWING IS ACCURATE HOWEVER SOME VARIATIONS FROM RECORDS MAY EXIST, AND COMPLETE ACCURACY CANNOT BE GUARANTEED.

CROSS SECTIONS 3

SCALES

DO NOT SCALE THIS DRAWING

WARNING: THE LOCATION OF U/G SERVICES SHOWN IS BASED ON INFORMATION SUPPLIED BY OTHER AUTHORITIES AND SHOULD BE PROVEN ON SITE. ALL WORKS NEAR SERVICES SHALL COMPLY WITH REQUIREMENTS OF THE RELEVANT AUTHORITY

CITY OF BALLARAT
ALBION STREET
BIRDWOOD AVE - WALKER ST

SURVEY: DATE: DRAWN: DATE: DESIGN: DATE: FILES:

Pete Batts TEAM LEADER DESIGN
Vaughn Northey MANAGER INFRASTRUCTURE

CITY OF BALLARAT

DRAWING No.
2020-53-05
SHEET 5 OF 10

PIT SCHEDULE - ALBION STREET											
PIT No.	TYPE	DIMENSION	SETOUT		INLET		OUTLET		TOP OF PIT	DEPTH TO INVERT	REMARKS
			EASTING	NORTHING	Dia	IL	Dia	IL			
A	S.E.PIT	900 x 600	750179.743	5835052.705	300	EXIST	300	EXIST	417.320		REFER SD-P1-1/2. OVER EXIST PIPE.
1	J.PIT	EXIST	750185.321	5835052.668							CONVERT S.E.PIT TO J.PIT. SD-P10-2
2	S.E.PIT	EXIST	750187.939	5835063.544							MODIFY EXIST PIT TO SUIT NEW CHANNEL. REFER SD-P8.
3	S.E.PIT	900 x 600	750209.818	5835052.181			300	416.100	417.465	1.365	REFER SD-P1-1/2.
4	J.PIT	EXIST	750207.069	5835052.138	300	416.080					CONVERT S.E.PIT TO J.PIT. SD-P10-2
5	S.E.PIT	EXIST	750201.636	5835063.353							MODIFY EXIST PIT TO SUIT NEW CHANNEL. REFER SD-P8.
6	S.E.PIT	900 x 600	750182.531	5835300.761			300	421.945	422.690	0.745	REFER SD-P1-1/2
7	J.PIT	EXIST	750187.496	5835300.742	300	421.905					CONVERT S.E.PIT TO J.PIT. SD-P10-2
8	J.PIT	EXIST	750210.447	5835300.492							CONVERT S.E.PIT TO J.PIT. SD-P10-2
9	S.E.PIT	900 x 600	750214.032	5835314.560							REFER SD-P1-1/2. OVER EXIST PIPE.
10	S.E.PIT	900 x 600	750182.847	5835314.311			225	422.555	422.900	0.345	REFER SD-P1-1/2
11	J.PIT	EXIST	750186.310	5835314.311	225	422.580					CONVERT S.E.PIT TO J.PIT. SD-P10-2
12	S.E.PIT	900 x 600	750193.621	5835318.986							REFER SD-P1-1/2. OVER EXIST PIPE.
13	S.E.PIT	900 x 600	750203.625	5835319.133							REFER SD-P1-1/2. OVER EXIST PIPE.
14	J.PIT	EXIST	750211.043	5835313.848	300	422.780					CONVERT S.E.PIT TO J.PIT. SD-P10-2
15	S.E.PIT	900 x 600	750214.330	5835313.476			300	422.000	422.800	0.800	REFER SD-P1-1/2

ISSUE	AMENDMENT	DATE

EVERY CARE HAS BEEN TAKEN TO ENSURE THAT THE INFORMATION SHOWN ON THE DRAWING IS ACCURATE HOWEVER SOME VARIATIONS FROM RECORDS MAY EXIST, AND COMPLETE ACCURACY CANNOT BE GUARANTEED.

PIT SCHEDULE

SCALES

DO NOT SCALE THIS DRAWING

WARNING: THE LOCATION OF U/G SERVICES SHOWN IS BASED ON INFORMATION SUPPLIED BY OTHER AUTHORITIES AND SHOULD BE PROVEN ON SITE. ALL WORKS NEAR SERVICES SHALL COMPLY WITH REQUIREMENTS OF THE RELEVANT AUTHORITY

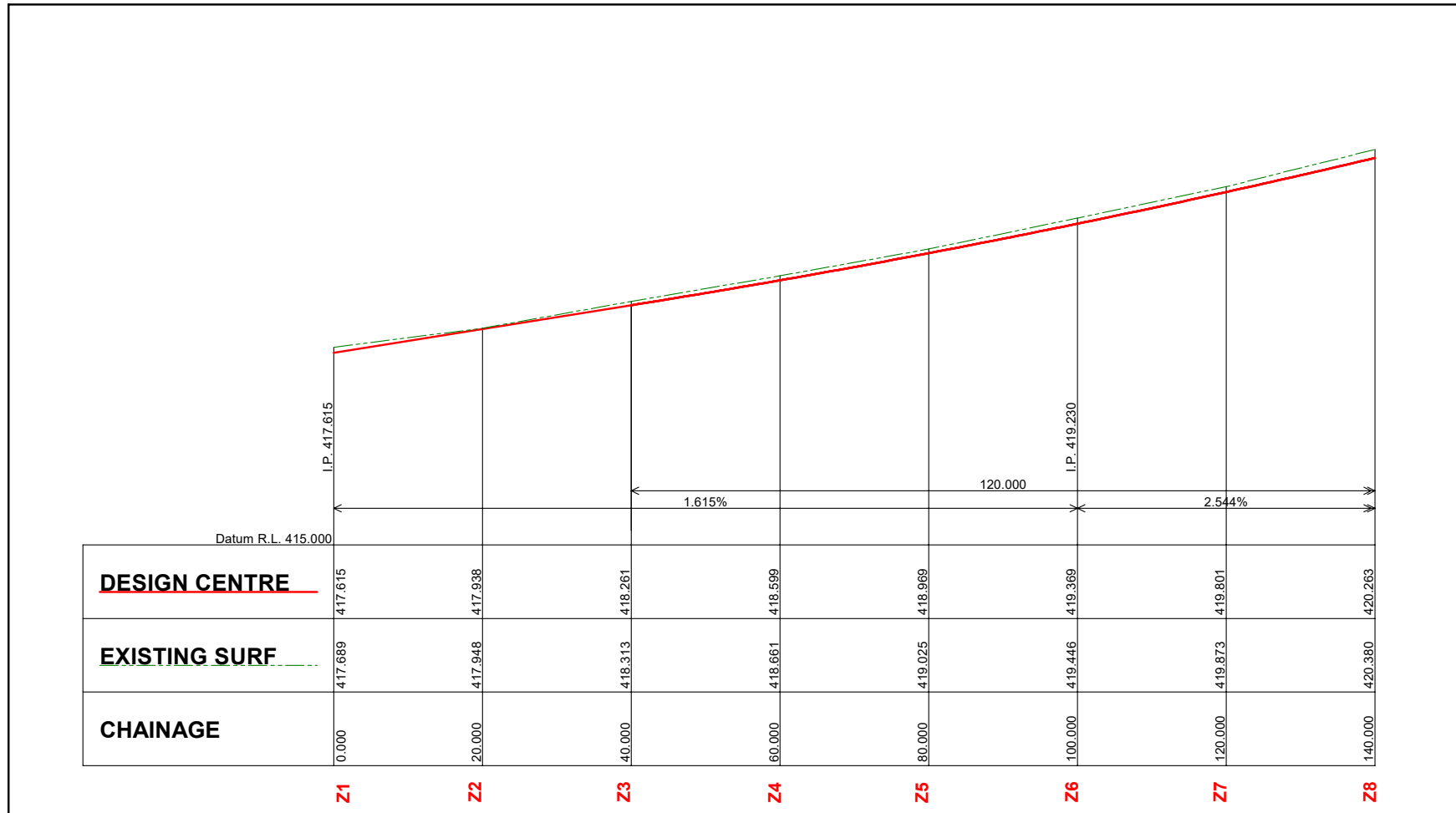
CITY OF BALLARAT
ALBION STREET
BIRDWOOD AVE - WALKER ST

SURVEY: _____ DATE: _____
 DRAWN: _____ DATE: _____
 DESIGN: _____ DATE: _____
 FILES: _____

Pete Batts TEAM LEADER DESIGN
Laughan North MANAGER INFRASTRUCTURE

CITY OF BALLARAT

DRAWING No. **2020-53-06**
SHEET 6 OF 10



Scale Horizontal 1:500 Vertical 1:50

ISSUE	AMENDMENT	DATE

EVERY CARE HAS BEEN TAKEN TO ENSURE THAT THE INFORMATION SHOWN ON THE DRAWING IS ACCURATE HOWEVER SOME VARIATIONS FROM RECORDS MAY EXIST, AND COMPLETE ACCURACY CANNOT BE GUARANTEED.

LONGITUDINAL SECTION 1

SCALES

DO NOT SCALE THIS DRAWING

WARNING: THE LOCATION OF U/G SERVICES SHOWN IS BASED ON INFORMATION SUPPLIED BY OTHER AUTHORITIES AND SHOULD BE PROVEN ON SITE. ALL WORKS NEAR SERVICES SHALL COMPLY WITH REQUIREMENTS OF THE RELEVANT AUTHORITY.

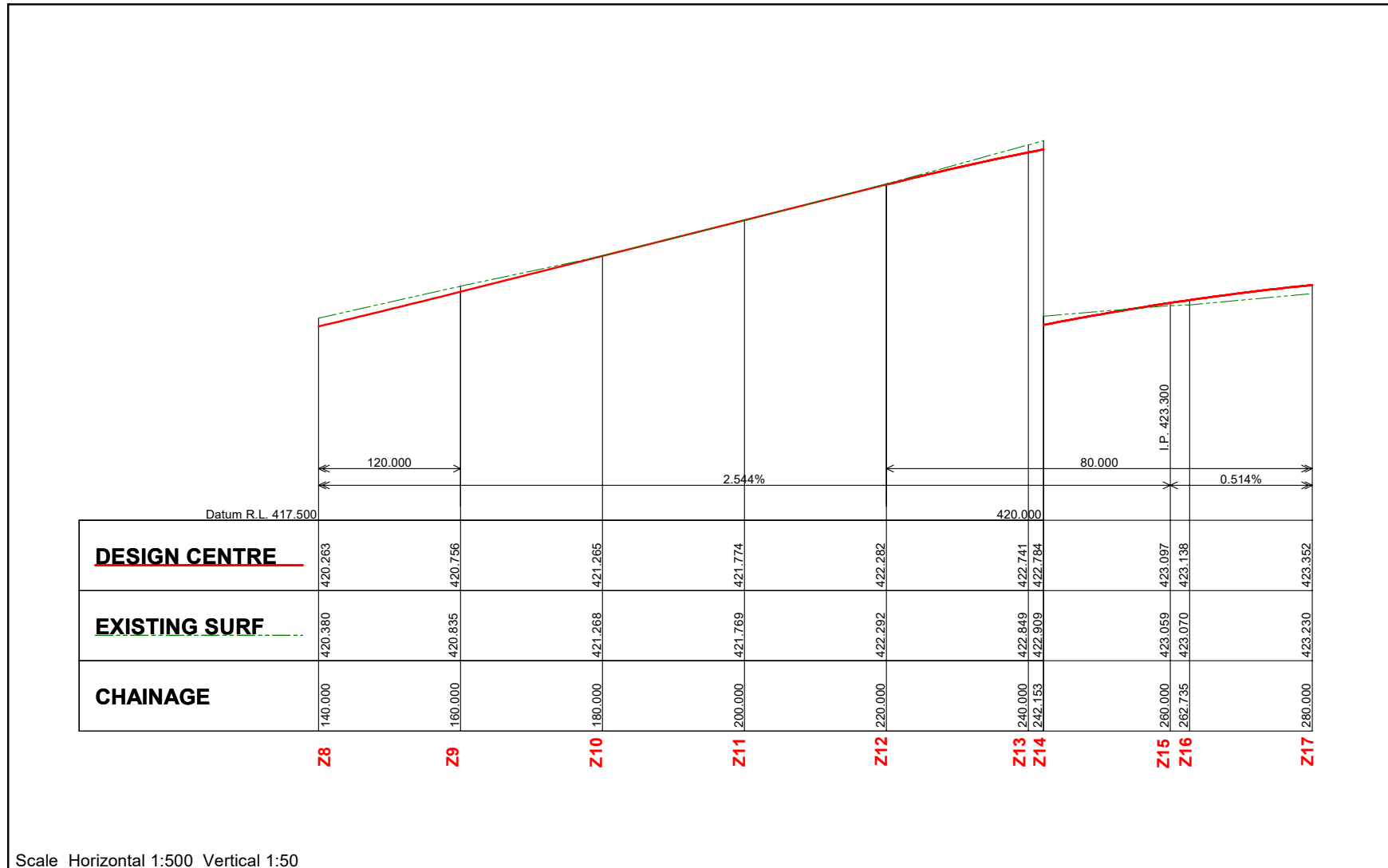
CITY OF BALLARAT
ALBION STREET
BIRDWOOD AVE - WALKER ST

SURVEY: _____ DATE: _____
 DRAWN: _____ DATE: _____
 DESIGN: _____ DATE: _____
 FILES: _____

Pete Bats TEAM LEADER DESIGN
Vaughn Northey MANAGER INFRASTRUCTURE

CITY OF BALLARAT

DRAWING No. **2020-53-07**
SHEET 7 OF 10



Scale Horizontal 1:500 Vertical 1:50

ISSUE	AMENDMENT	DATE

EVERY CARE HAS BEEN TAKEN TO ENSURE THAT THE INFORMATION SHOWN ON THE DRAWING IS ACCURATE HOWEVER SOME VARIATIONS FROM RECORDS MAY EXIST, AND COMPLETE ACCURACY CANNOT BE GUARANTEED.

LONGITUDINAL SECTION 2

SCALES

DO NOT SCALE THIS DRAWING

WARNING: THE LOCATION OF U/G SERVICES SHOWN IS BASED ON INFORMATION SUPPLIED BY OTHER AUTHORITIES AND SHOULD BE PROVEN ON SITE. ALL WORKS NEAR SERVICES SHALL COMPLY WITH REQUIREMENTS OF THE RELEVANT AUTHORITY

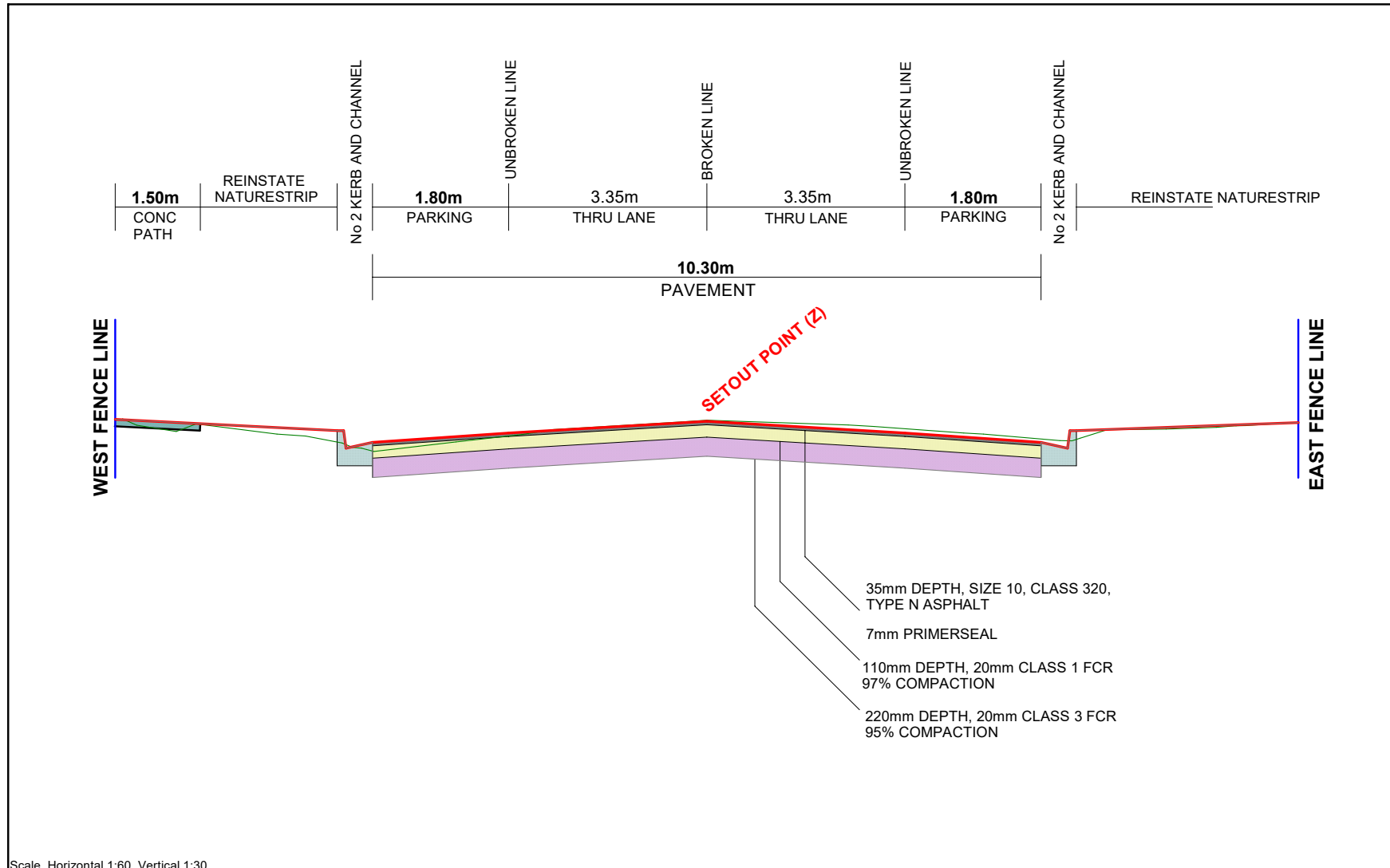
CITY OF BALLARAT
ALBION STREET
BIRDWOOD AVE - WALKER ST

SURVEY: _____ DATE: _____
 DRAWN: _____ DATE: _____
 DESIGN: _____ DATE: _____
 FILES: _____

Pete Batts TEAM LEADER DESIGN
Vaughn Northey MANAGER INFRASTRUCTURE

CITY OF BALLARAT

DRAWING No. **2020-53-08**
SHEET 8 OF 10



Scale Horizontal 1:60 Vertical 1:30

ISSUE	AMENDMENT	DATE

EVERY CARE HAS BEEN TAKEN TO ENSURE THAT THE INFORMATION SHOWN ON THE DRAWING IS ACCURATE HOWEVER SOME VARIATIONS FROM RECORDS MAY EXIST, AND COMPLETE ACCURACY CANNOT BE GUARANTEED.

TYPICAL SECTION 2020

SCALES

DO NOT SCALE THIS DRAWING

WARNING: THE LOCATION OF U/G SERVICES SHOWN IS BASED ON INFORMATION SUPPLIED BY OTHER AUTHORITIES AND SHOULD BE PROVEN ON SITE. ALL WORKS NEAR SERVICES SHALL COMPLY WITH REQUIREMENTS OF THE RELEVANT AUTHORITY

CITY OF BALLARAT
ALBION STREET
BIRDWOOD - VICKERS ST

SURVEY:	DATE:
DRAWN:	DATE:
DESIGN:	DATE:
FILES:	DATE:

Pete Bats TEAM LEADER DESIGN
Paugh North MANAGER INFRASTRUCTURE

CITY OF BALLARAT

DRAWING No. **2020-53-09**
SHEET 9 OF 10