

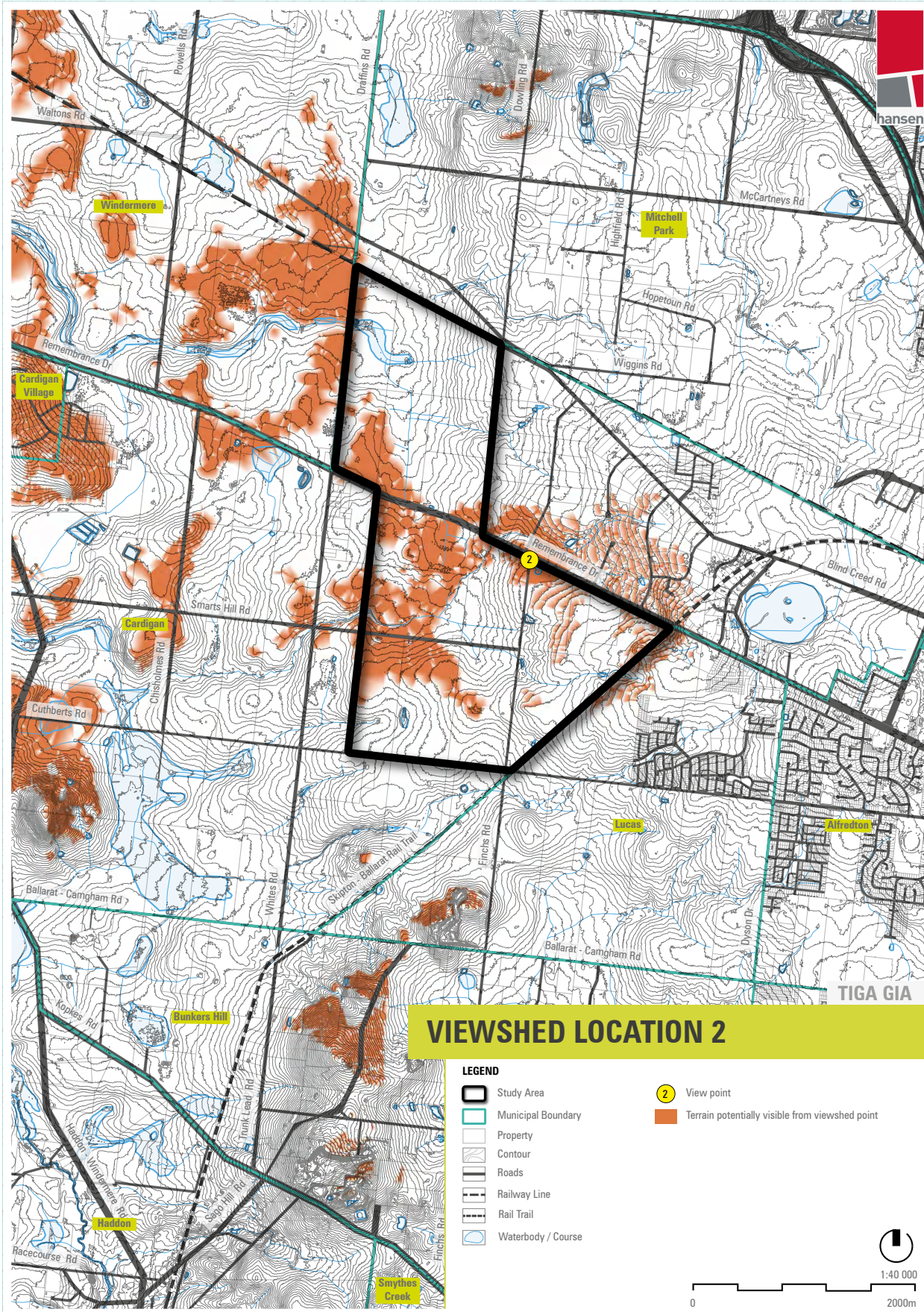
VIEWSHED LOCATION 1

View 1 from Skipton-Ballarat Rail Trail looking west.

LANDSCAPE CHARACTER AREAS VISIBLE:

- Area 1: Plains





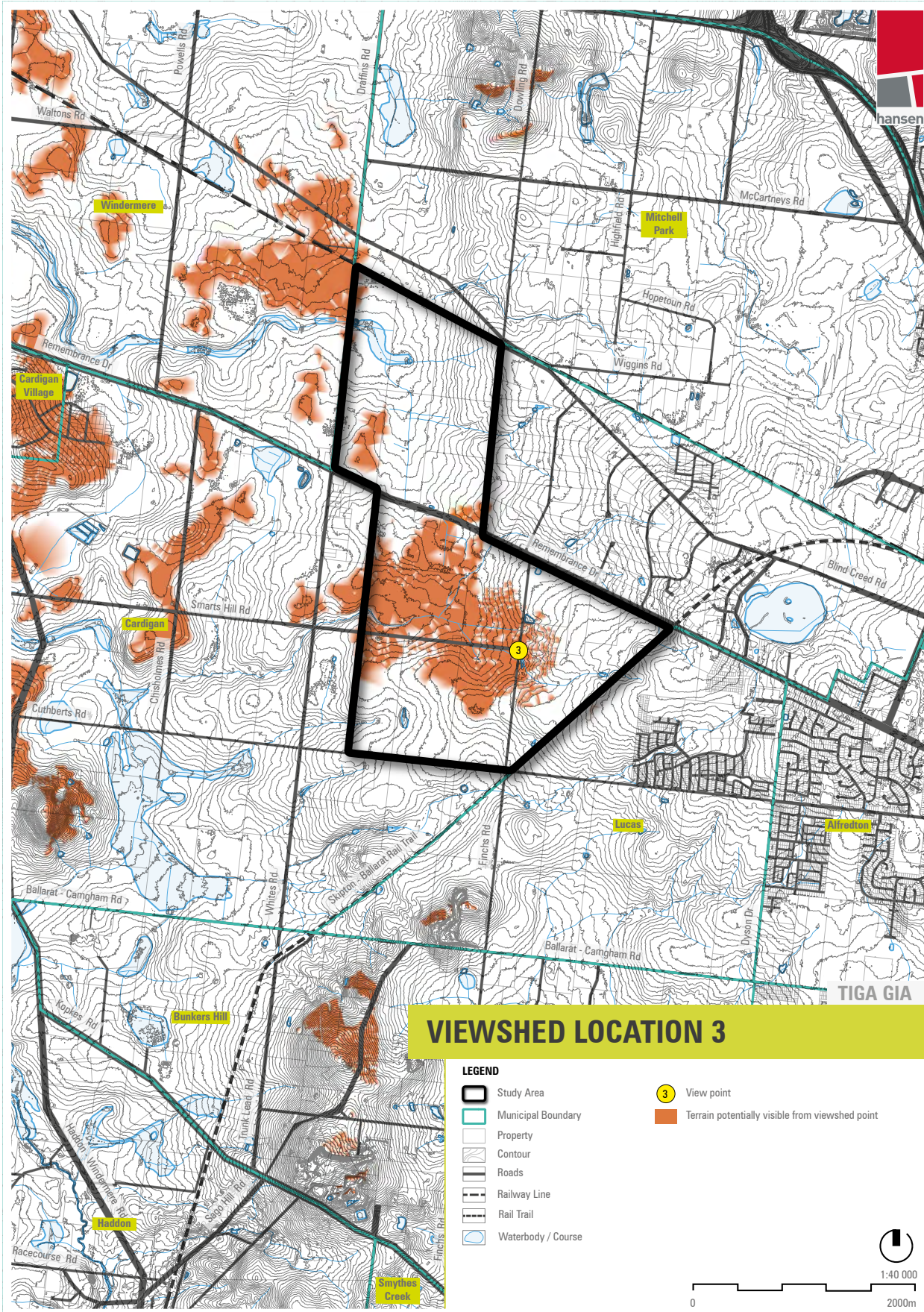
VIEWSHED LOCATION 2

View 2 from the junction of Finches Road and Remembrance Drive looking south west.

LANDSCAPE CHARACTER AREAS VISIBLE:

- Area 1: Plains





VIEWSHED LOCATION 3

View 3 from the junction of Finches Road and Smarts Hill Road looking east and west.

LANDSCAPE CHARACTER AREAS VISIBLE:

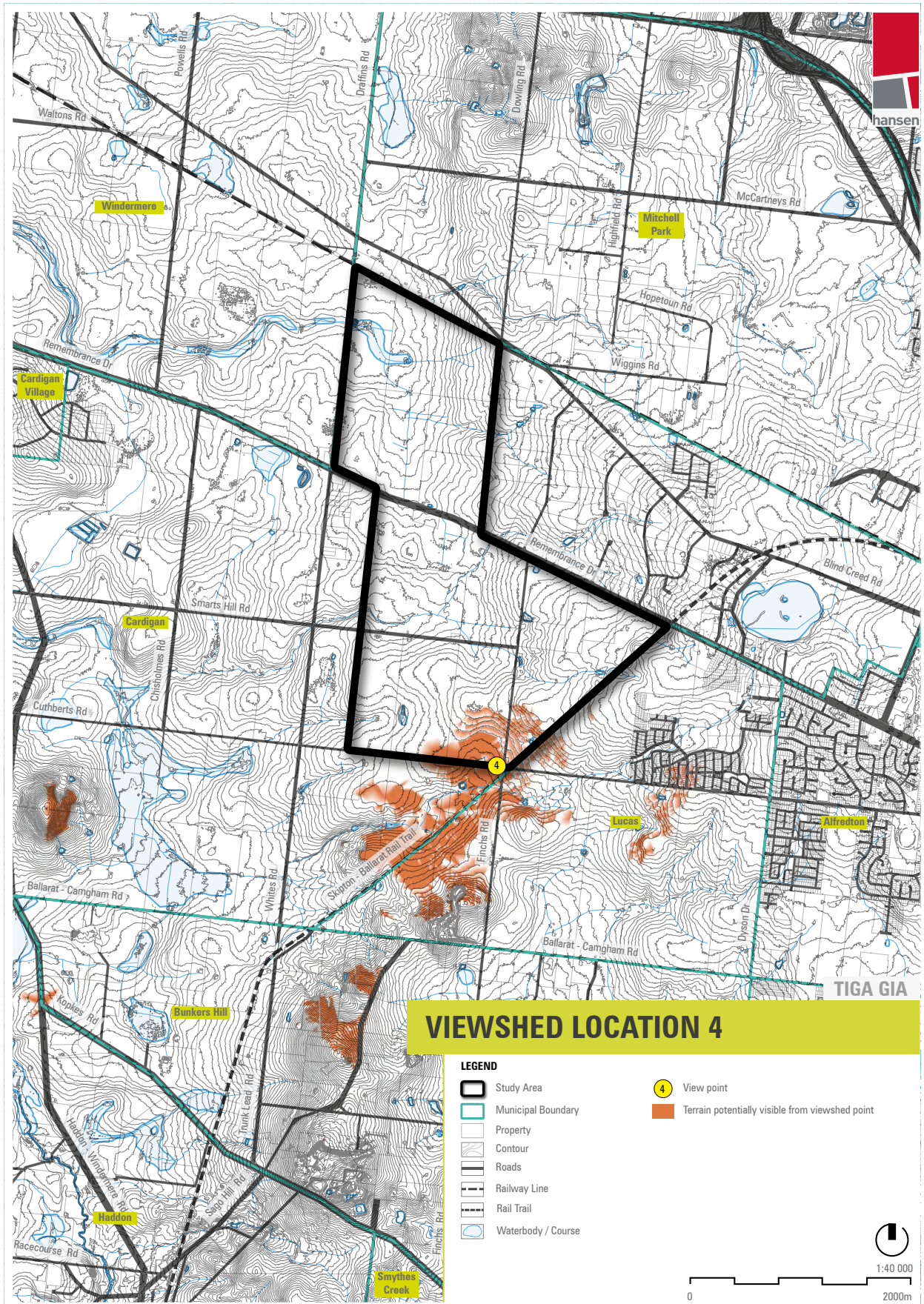
- Area 1: Plains



View east



View west



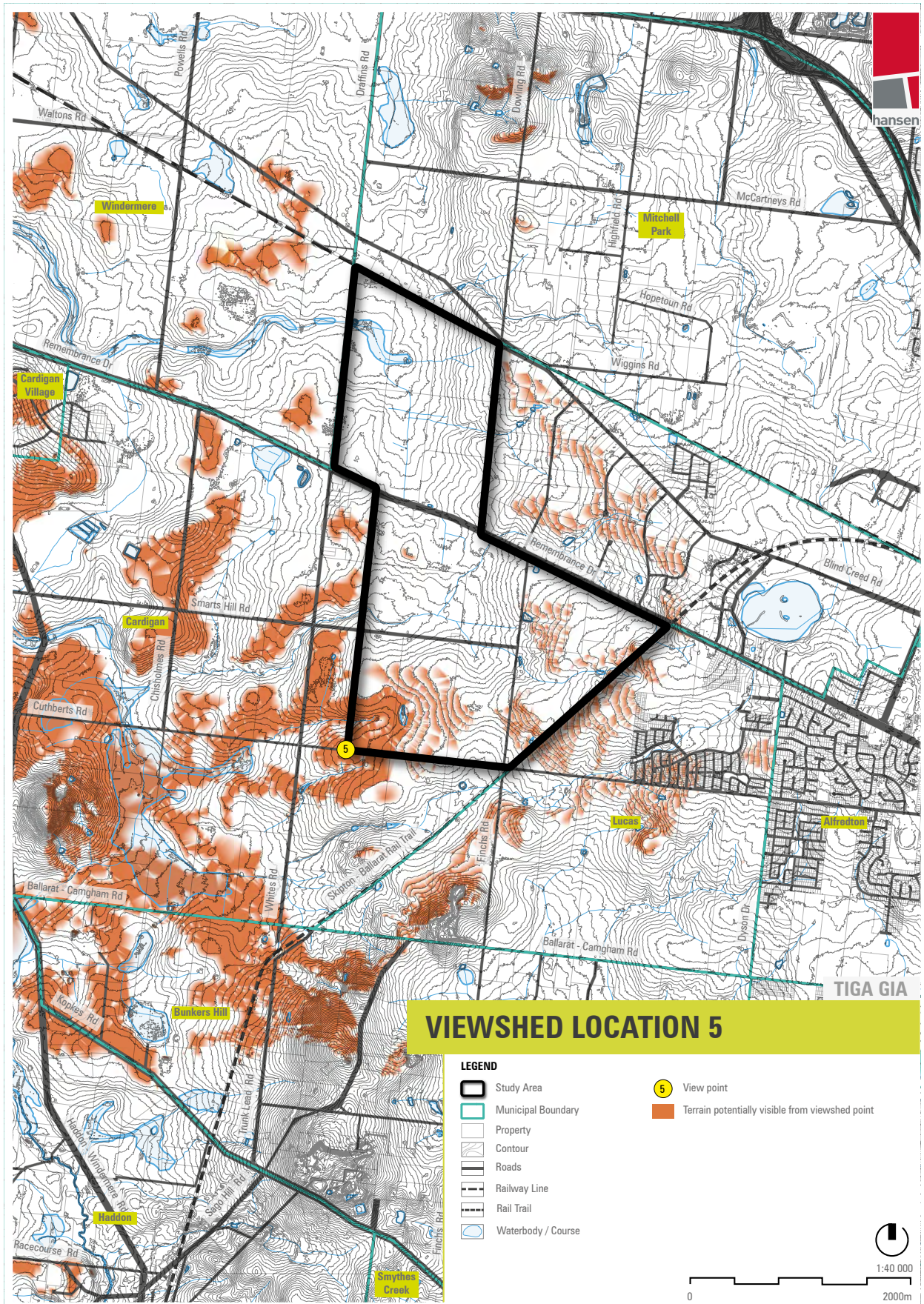
VIEWSHED LOCATION 4

View 4 from the junction of Finches Road and Cuthberts Road looking north-west.

LANDSCAPE CHARACTER AREAS VISIBLE:

- Area 1: Plains





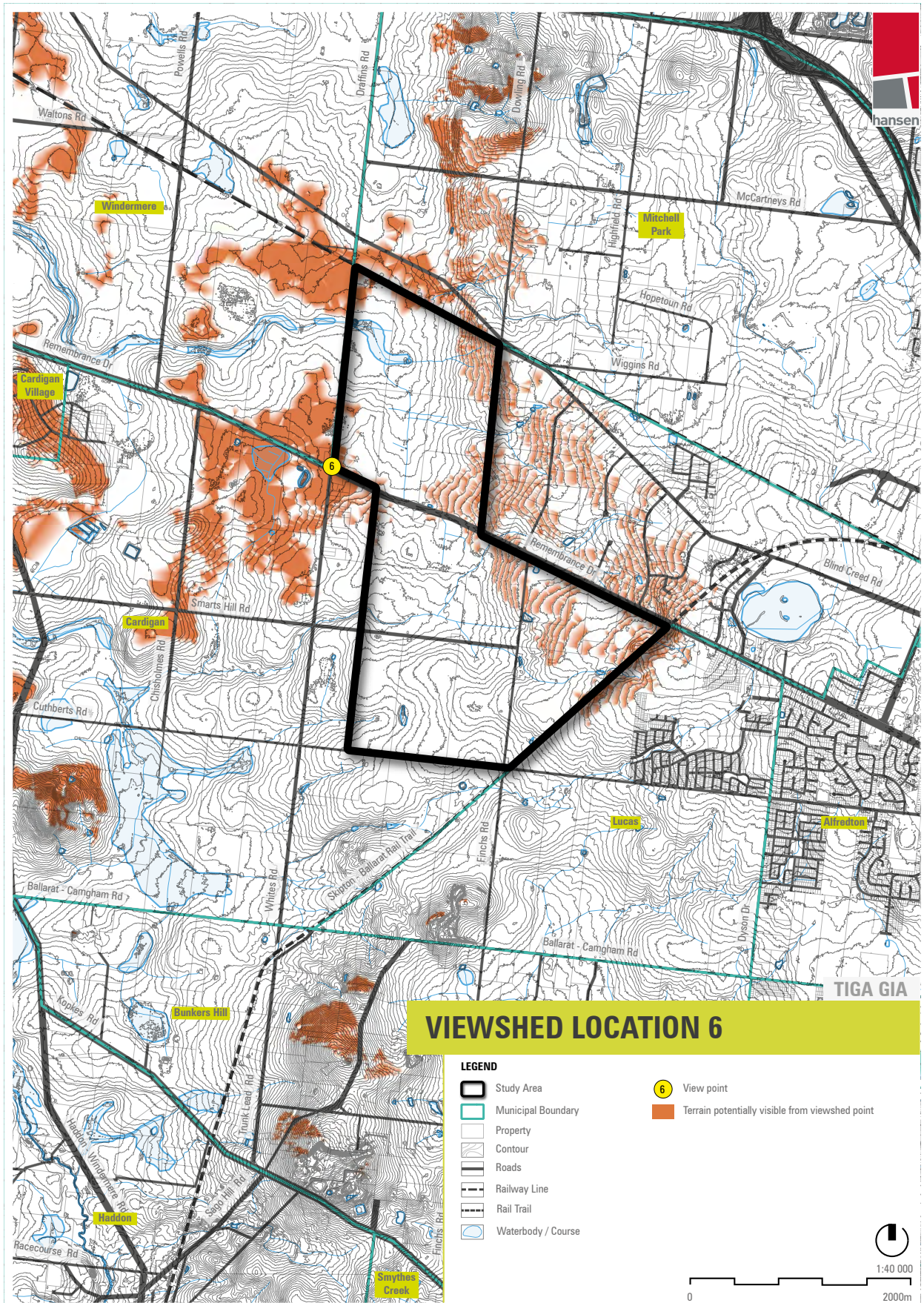
VIEWSHED LOCATION 5

View 5 from Cuthberts Road looking north-east.

LANDSCAPE CHARACTER AREAS VISIBLE:

- Area 1: Plains





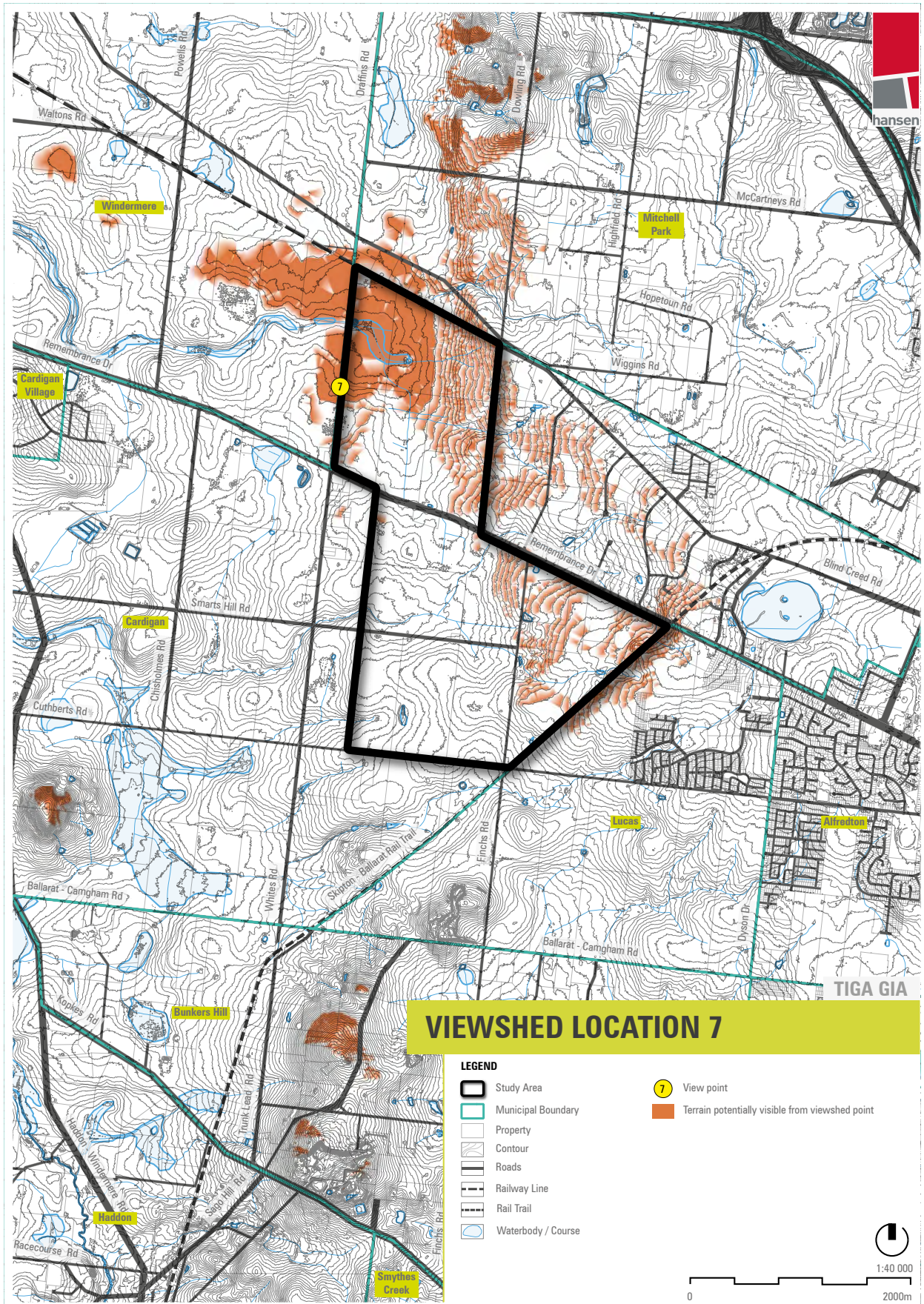
VIEWSHED LOCATION 6

View 6 from the junction of Remembrance Drive and Draffins Road looking north-east.

LANDSCAPE CHARACTER AREAS VISIBLE:

- Area 1: Plains





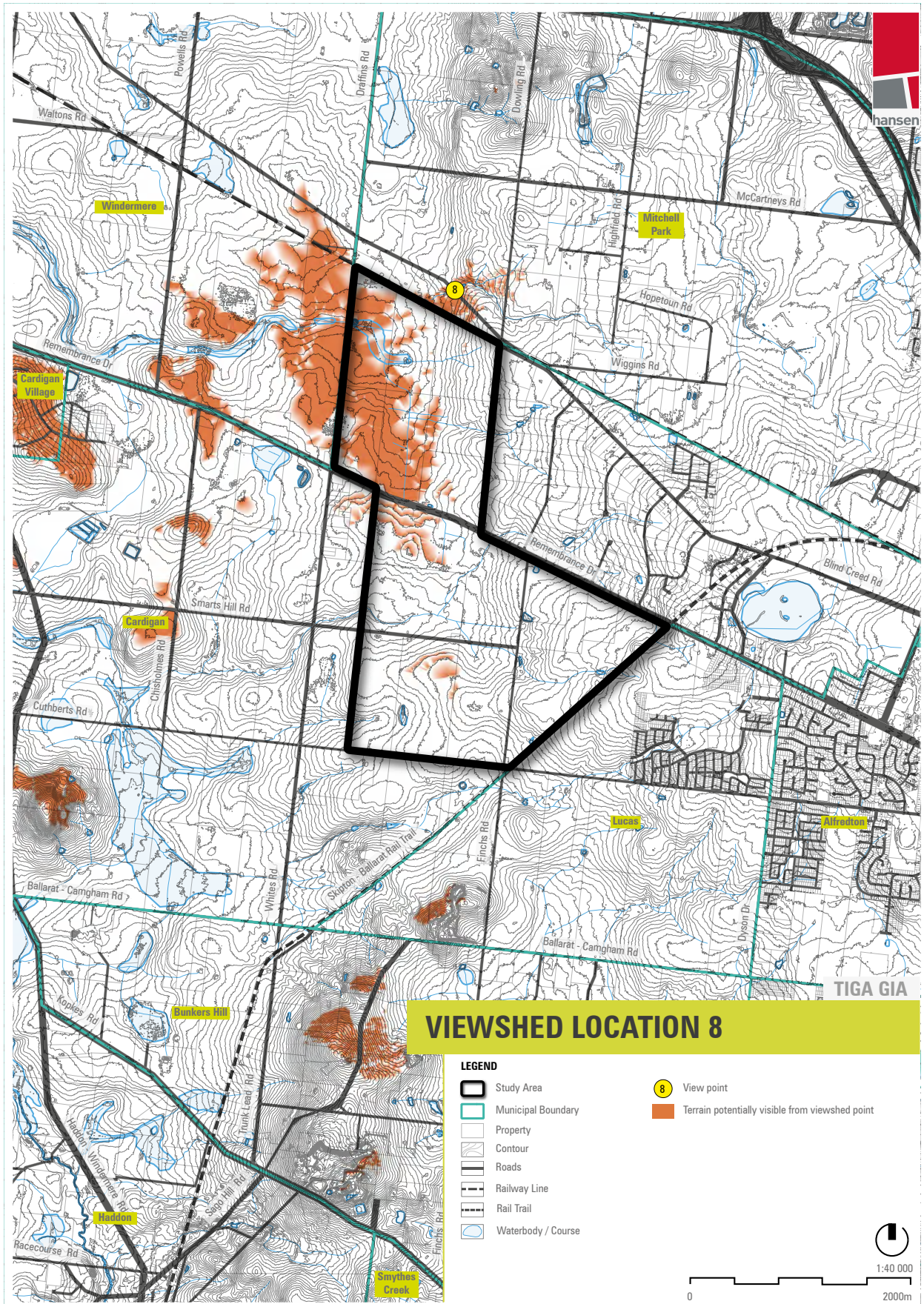
VIEWSHED LOCATION 7

View 7 from Draffins Road looking east.

LANDSCAPE CHARACTER AREAS VISIBLE:

- Area 1: Plains





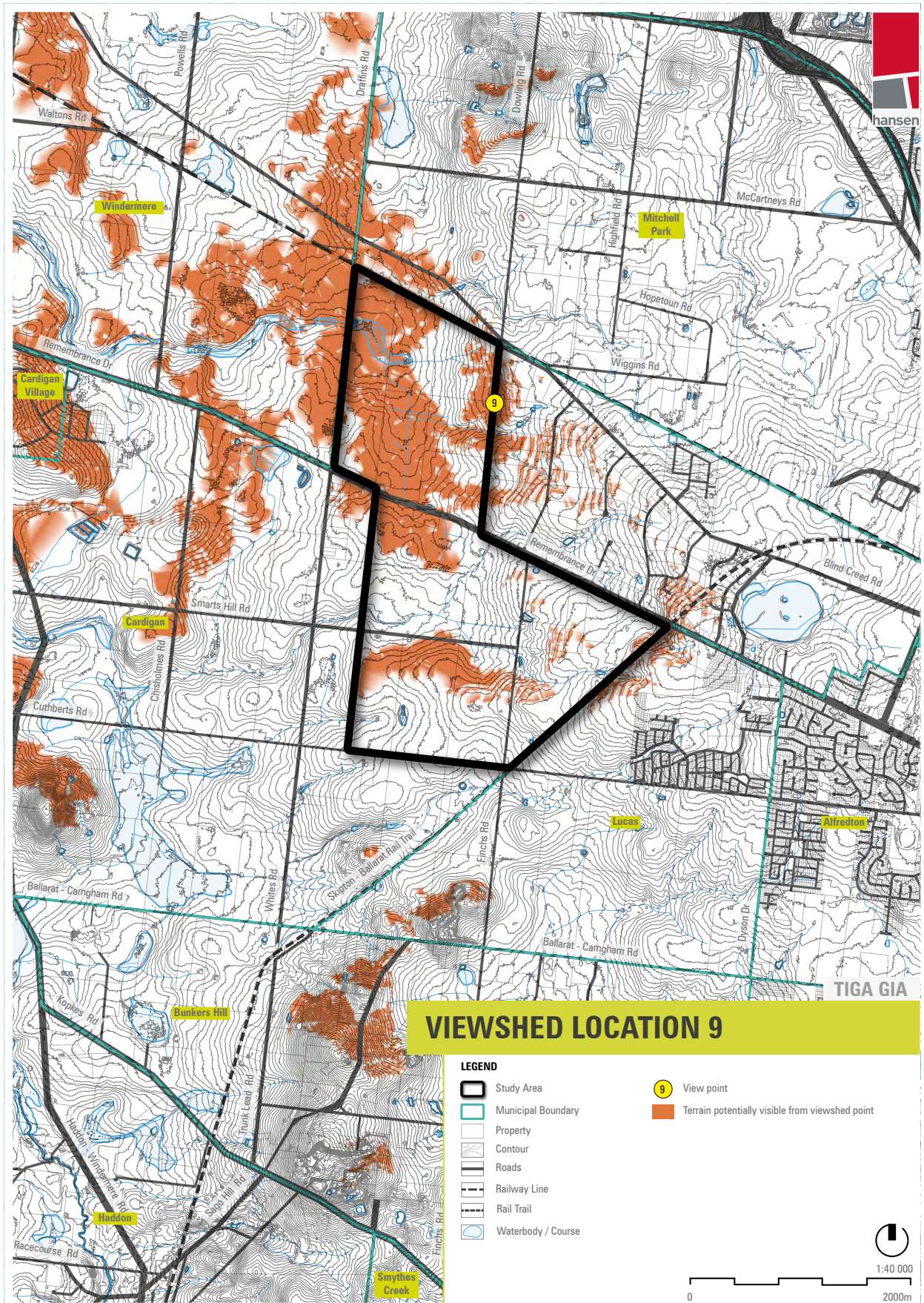
VIEWSHED LOCATION 8

View 8 from Blind Creek Road looking south.

LANDSCAPE CHARACTER AREAS VISIBLE:

- Area 1: Plains





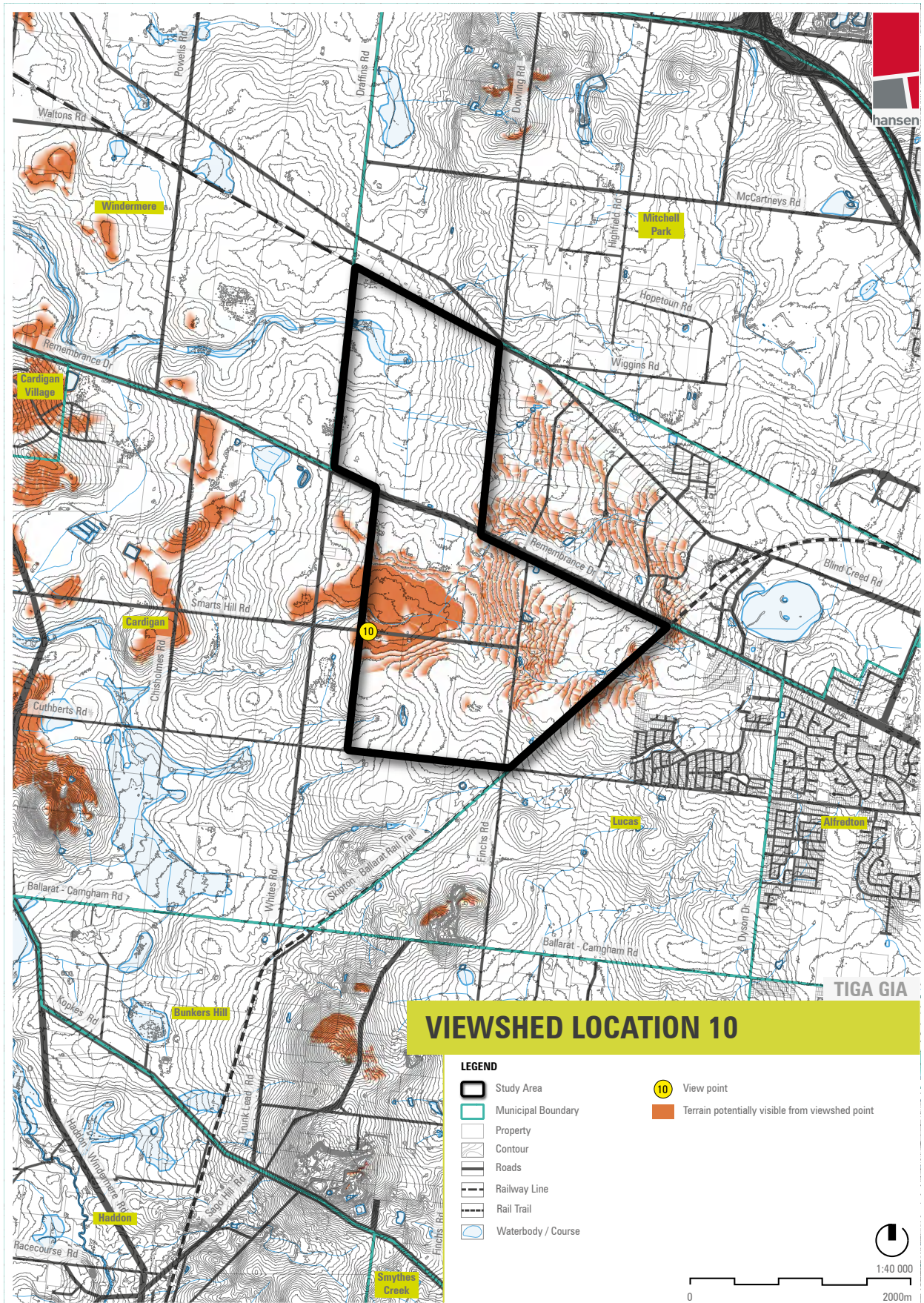
VIEWSHED LOCATION 9

View 9 from Dowling Road looking west.

LANDSCAPE CHARACTER AREAS VISIBLE:

- Area 1: Plains





VIEWSHED LOCATION 10

View 10 from Smarts Hill Road looking north and south-east.

LANDSCAPE CHARACTER AREAS VISIBLE:

- Area 1: Plains



View north



View south-east

ASSESSMENT OF

4. VISUAL EXPOSURE

VISUAL EXPOSURE (BROAD)

The proceeding diagrams provide a broad graphic summary of the visual exposure achieved from all viewshed locations combined. This mapping has been produced by overlaying all the viewshed maps.

The areas with visual exposure are shaded in varying tones of red. The darker areas indicate locations that appear in more than one viewshed analysis map, with the darkest appearing multiple times across the viewpoints assessed. This process is not intended to be an acutely scientific or statistical data set but it does provide an indication of specific areas that warrant further investigation as part of the landscape assessment.