



Art Gallery of Ballarat Interior Upgrades

Project Cost

\$5.5 million

- Heritage wall lining: \$490,000
- Upgrade of HVAC System: \$5 million

Investment Needed

- Heritage wall lining: \$445,000
- Upgrade of HVAC system: Up to \$4.6 million

City of Ballarat Investment

- Heritage wall lining: \$45,000 for design
- Upgrade of HVAC system: \$400,000
- Further contribution subject to City of Ballarat 2024/25 budget processes

Project Description

Replace redundant humidifiers and boilers (HVAC) to ensure the Art Gallery of Ballarat (AGB) collection is preserved, and to enhance the AGB's ability to attract loans and host national and international exhibitions.

Inadequate environmental conditions cause disastrous damage to a gallery collection. The upgrade will reduce the significant reputational risk to the City of Ballarat and result in a reduction in electricity and maintenance costs.

Lining the walls of each gallery will enable the AGB to stop hanging artworks on wires which is inefficient and not best

practice for a major regional Gallery.

Wires are a security risk as they fail and works can be lifted off and removed.

The heritage walls are unstable and unsuitable for contemporary hanging systems.

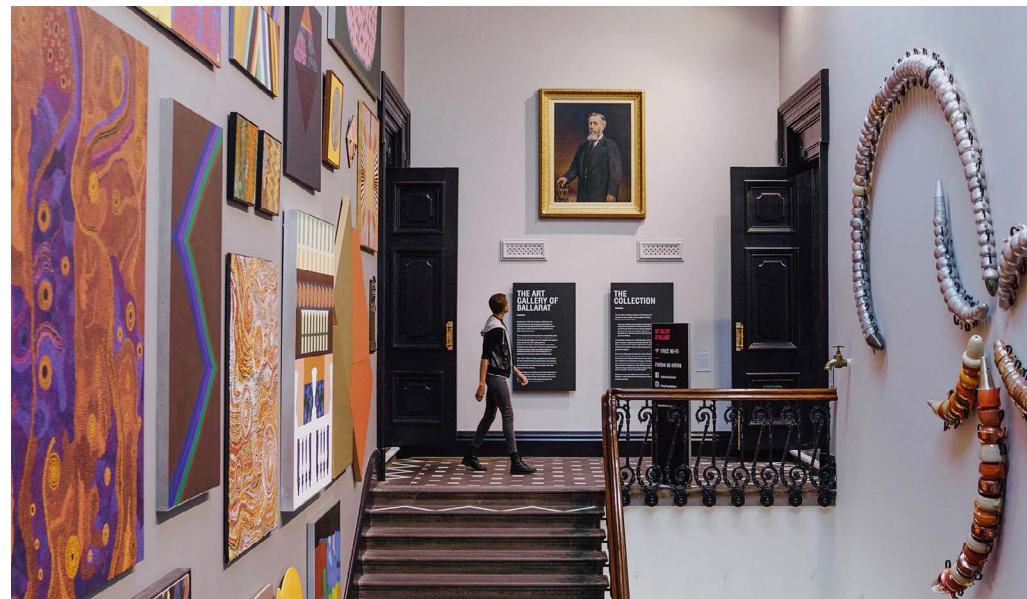
The new linings will enable works to be fixed directly to the wall; improved display infrastructure will mean the AGB can more efficiently and safely undertake changeovers, meaning more artworks can be displayed and more borrowed.

Why should Governments invest in this project?

Community Benefit

With 10,500 plus artworks conservatively valued at over \$130 million, the AGB's collection is one of the top five in the country, and the best in regional Australia. It includes some of the most significant paintings of the Australian Impressionists, works related to the Eureka rebellion and early exploration, printmaking and contemporary works.

The AGB hosts over 30 exhibitions and 150 programs and events annually, including international exhibitions.



Art Gallery of Ballarat Interior Upgrades continues on next page >

**Note: All project costs are subject to inflationary pressures leading to cost escalations*

Evan King, Chief Executive Officer
5320 5500 | ceo@ballarat.vic.gov.au



Art Gallery of Ballarat Interior Upgrades continued

The Art Gallery is a major economic driver for Ballarat with over 200,000 visitors per year, including 10,000 schoolchildren.

The depth of the collection is reflected in the more than 70 outward loans to national and state galleries each year.

Sadly, the non-compliant environment of the AGB means it is rarely able to borrow works from other collections without making short term arrangements to ensure an appropriate environment.

Visitor economy benefits

The AGB is a major economic driver for Ballarat with over 200,000 visitors per year, including 10,000 schoolchildren. The proposed works will:

- Increase the AGB's ability to attract blockbuster exhibitions
- Provide the opportunity to increase the number of annual visits, bringing significant financial and job benefits to Ballarat's economy
- Transform display infrastructure to ensure that the AGB can efficiently and safely undertake changeovers that enable the presentation of more artworks and receive more loans

Protect the Gallery's collection

The proposed works will bring the AGB into line with museum best practice in preserving the Gallery's collection and presenting it in the best possible spaces and conditions.

Location

- 40 Lydiard Street North, Ballarat Central

Status

- Both projects are ready to proceed as soon as external funding is secured

Timeline and Next Steps

- Heritage wall lining is expected to take between three and six months



Ballarat Bus Network Review

Project Cost

Not costed (Victorian Government project)

Investment Needed

- TBD

City of Ballarat Investment

- None

Project Description

Review of the design, timetabling and reach of the Ballarat bus network, operated by Public Transport Victoria, to ensure the government’s investment in buses delivers maximum benefit for Ballarat residents.

Community Benefit

An overhaul of Ballarat’s bus network will bring a range of benefits for residents including:

- Increasing the convenience and accessibility of the bus network for users, and providing incentives for new patrons to use buses
- Reducing the number of car journeys, easing traffic congestion at peak times and relieving strain on Ballarat’s road network

Location

- Across Ballarat urban area

Why should Governments invest in this project?

Voter Appeal

Council’s 2023 bus network survey found residents wanted better cross-town services, faster journey times and greater frequency of services.

Respond to Growth

Lucas, Alfredton and Winter Valley have grown substantially since the last major changes to the bus network (2017) but provision of bus routes and services has not kept pace with growth and resident demand.

Address disadvantage

A review and overhaul of the bus network can result in improved transport options for people without independent transport to access education, employment, and medical services, and better transport options for people with disability.

Status

- Continued advocacy to the Victorian Government for a review of the Ballarat bus network



Ballarat-Carngham Road Upgrade

Project Cost

Not costed (Victorian Government project)

Investment Needed

- The project is part funded with \$6.6 million for design work through 2022/23 Victorian State Budget
- Remaining investment ask is to be determined following completion of design work.

City of Ballarat Investment

- None

Project Description

Upgrade and duplication of a 2.4 kilometre section of Ballarat-Carngham Road between Wiltshire Lane and Dyson Drive, providing two lanes in each direction, central median, upgraded intersections and associated landscaping/shared path facilities.

Community Benefit

Delivery of a key transport corridor to support businesses and residents in the Ballarat West Growth Area, bringing improved travel times and road safety, and reduced risk for residents and road users, particularly Alfredton, Lucas and Winter Valley.

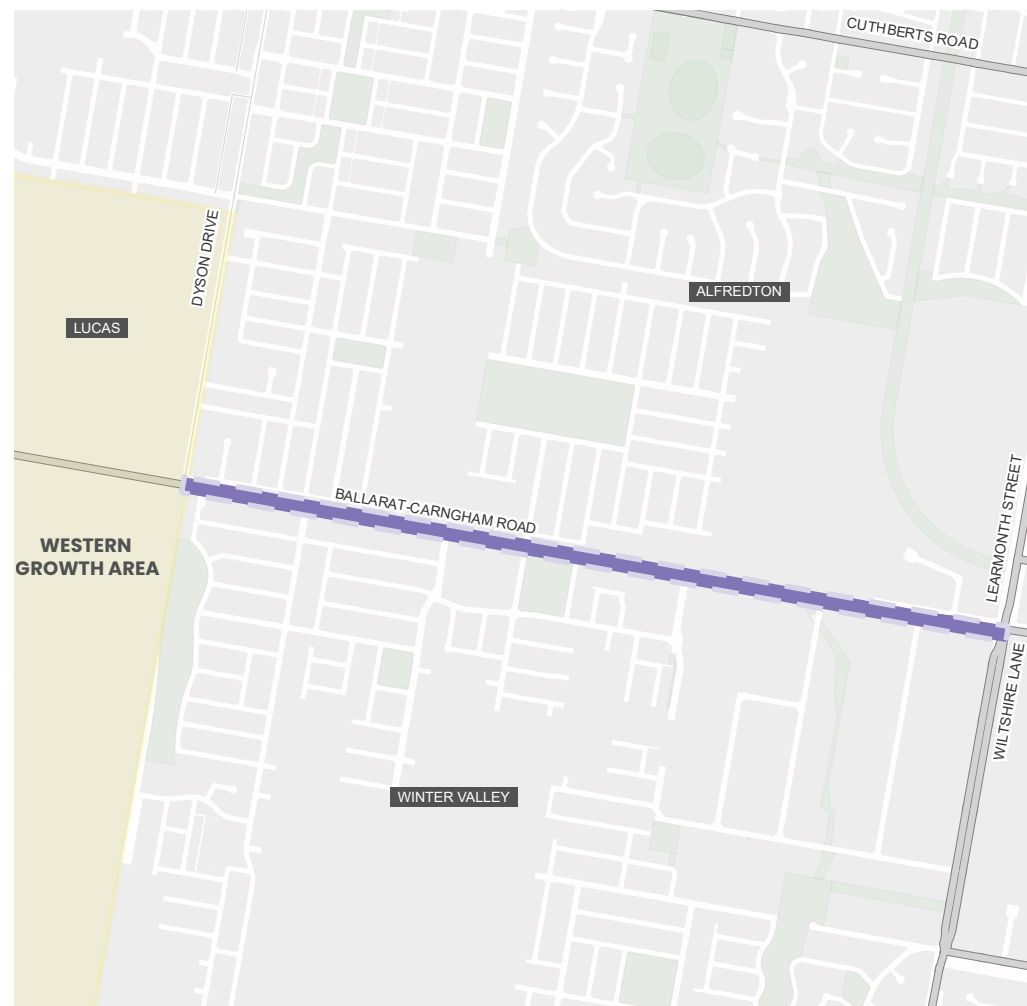
The upgrade will improve the quality the freight route for trucks and heavy vehicles.

Location

- Ballarat-Carngham Road between Wiltshire Lane and Dyson Drive, Ballarat West Growth Area

Status

- Preliminary concept design work and investigation completed
- Funding required for more detailed design work, a cost estimate and full business case



Ballarat Regional Soccer Facility – Elite Sports Package

Project Cost

\$2.9 million

- **Priority 1:** \$650,000 grandstand roof
- **Priority 2:** \$1.5 million to upgrade lights
- **Priority 3:** \$700,000 for spectator shade on two synthetic pitches

Investment Needed

- Up to \$2.9 million

City of Ballarat Investment

- Subject to Council budget processes

Project Description

Upgrades to the Ballarat Regional Soccer Facility (BRSF), including a roof over the grandstand, broadcast standard lighting and spectator shade at the synthetic pitches to bring the ground up to national standard.

Community Benefit

The works will enhance capacity at BRSF to comfortably host elite competition including A League Men and A League Women’s matches, improve game-day experiences for players and spectators attending regional championships and for local sides playing matches at the venue.

Why should Governments invest in this project?

Enhance Ballarat’s premier soccer facility

The venue is used by all ages, juniors, seniors, male and female and hosts all abilities and primary and secondary schools’ soccer tournaments.

Players and spectators come from around the state for the Ballarat and District Soccer Association competition, while Ballarat City regularly hosts teams from Melbourne.

Western United FC has expressed interest in its women’s team playing at the ground, potentially two to six games a year.

Location

- 910 Pleasant Street South, Redan

Status, Timeline and next steps

- Ongoing advocacy



Ballarat West Growth Area Primary School and Secondary School

Project Cost

Not costed (Victorian Government)

Investment Needed

- Victorian Government agreement and funding to deliver two new schools in the Ballarat West Growth Area (BWGA)

City of Ballarat Investment

- None

Project Description

Two new schools for students in Ballarat's fastest growing suburbs.

- P-6 primary school in Delacombe Town Centre
- 7-12 Secondary School in Winter Valley

Community Benefit

Providing access to modern educational facilities and taking enrolment pressure off existing state schools. Reduced travel time and costs for students and their families, and reduced traffic congestion across the western half of Ballarat, especially at peak times.

Responding to growth

- 2021 Census population figures for the Delacombe Statistical Area, which includes Winter Valley, Bonshaw, and Delacombe, show the area's population grew by more than 50 per cent in five years to 10,661
- The number of families in the area grew by 55.9 per cent in the same period
- The BWGA, including Delacombe and Winter Valley, is projected to grow from 28,834 in 2023 to 48,500 people by 2036 (*forecast.id*)



Ballarat West Growth Area Primary School and Secondary School continues on next page >

Ballarat West Growth Area Primary School and Secondary School continued

The new schools will ease pressure on government schools in Ballarat's west, particularly Ballarat High School and Phoenix P-12 Community College

Why should Governments invest in this project?

The new schools will:

- Ease pressure on government high schools in Ballarat's west, particularly Ballarat High School and Phoenix P-12 Community College
- Provide additional capacity to meet future regional demand from developments in the north of Golden Plains Shire

Location

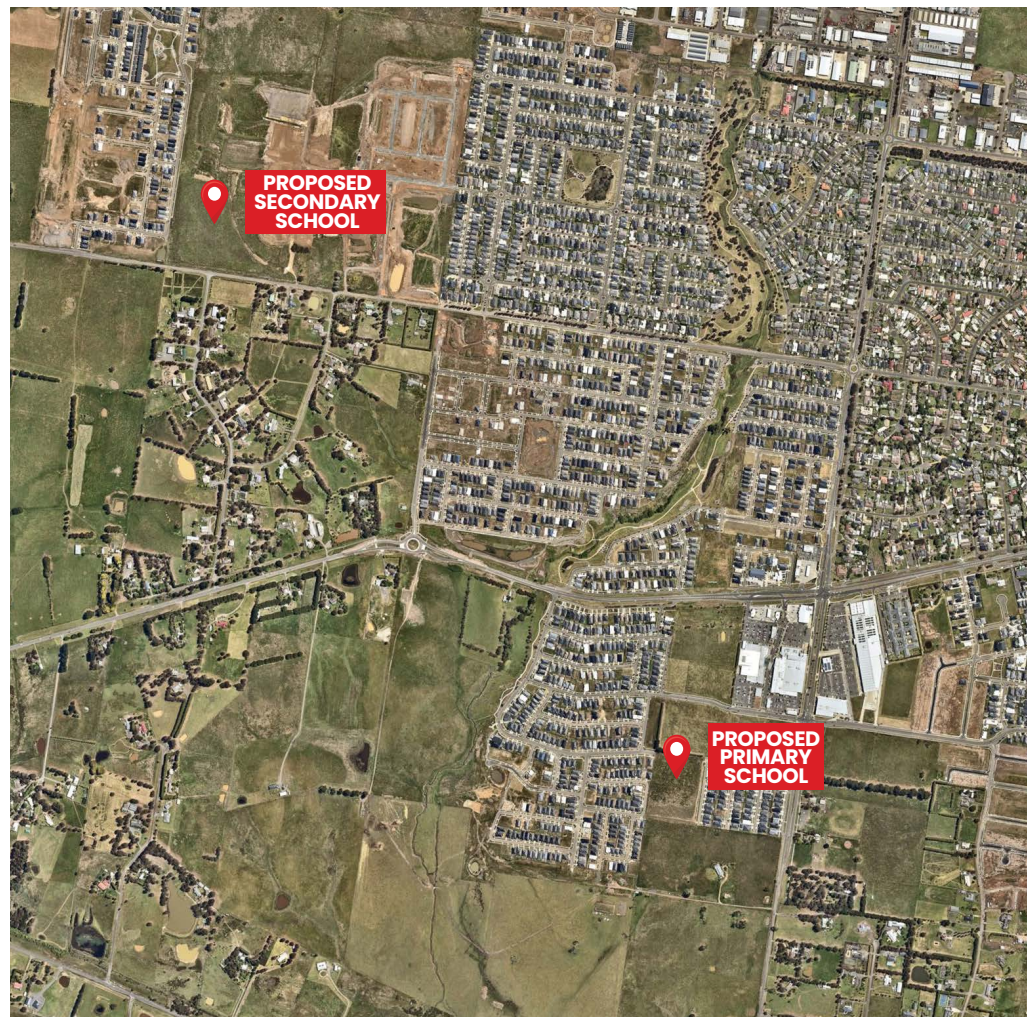
- Primary School: 54 Cherry Flat Road Smythes Creek
- Secondary School: 512 Greenhalghs Road, Winter Valley

Status

- Schools in Delacombe Town Centre and Winter Valley are identified in the Ballarat West Growth Area Precinct Structure Plan (PSP), which received planning approval from the Victorian Government in 2012

Timeline and Next Steps

- Ongoing advocacy



Site Aerial as of 7 November 2023

Note: All project costs are subject to inflationary pressures leading to cost escalations

Evan King, Chief Executive Officer
5320 5500 | ceo@ballarat.vic.gov.au

Continuous Voices Memorial

Project Cost

\$1.5 million

Investment Needed

- \$500,000

City of Ballarat Investment

- \$520,000

Victorian Government Funding

- \$500,000

Project Description

The Continuous Voices Memorial will acknowledge and honour survivors of sexual assault.

Located in a peaceful public space in Victoria Park, the Memorial's design will be informed by conversations with more than 50 survivors who spent 12 months exploring ideas of acknowledgment, memorials and telling survivor stories as part of the Continuous Voices Arts Project.

Their stories will be used to guide the design of the memorial and site, ensuring survivor voices are at the heart of the design.

Community Benefit

The Memorial will provide an opportunity to deepen community understanding of the tragic consequences and intergenerational trauma that come from sexual abuse.

It will acknowledge and recognise the pain and trauma caused by all forms of sexual violence whether in an institution, family or elsewhere.

Sexual assault survivors in Ballarat have been advocating for a memorial to acknowledge all survivors for close to a decade.

Why should Governments invest in this project?

This is a unique opportunity for a three-way funding partnership between governments.

A small financial commitment, will have an enormous intergenerational impact, demonstrating support and solidarity for all survivors of sexual violence.

It will be significant to many community members and has the potential to make a large impact in the city's journey towards acknowledgment.

Location

- Victoria Park, Ballarat

Status

- The City of Ballarat is running a national, two stage, design competition to find the most compelling concept design for the Continuous Voices Memorial

Survivor stories will be used to guide the design of the memorial and site, ensuring their voices are at the heart of the design.



Continuous Voices Memorial continues on next page ➤

Note: All project costs are subject to inflationary pressures leading to cost escalations

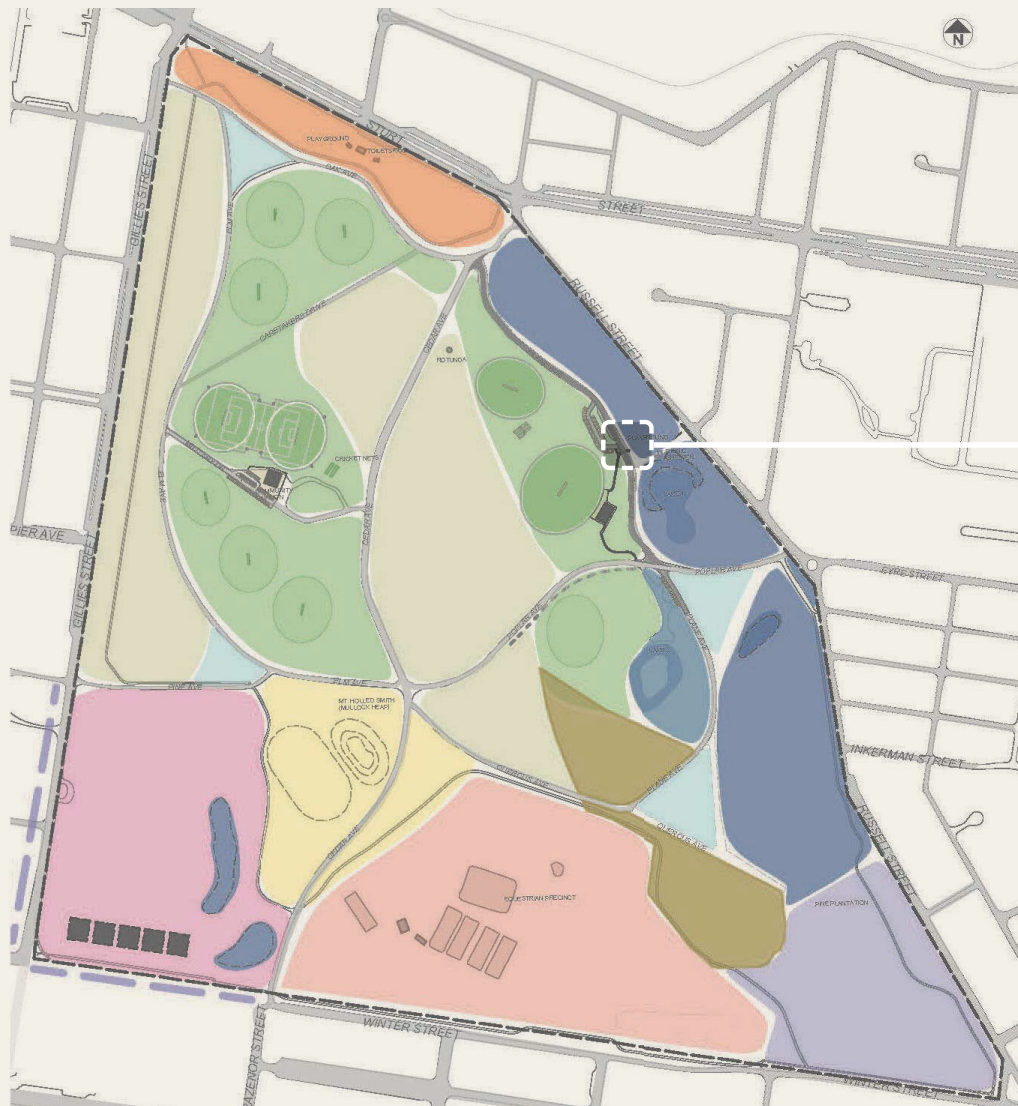
Evan King, Chief Executive Officer
☎ 5320 5500 ✉ ceo@ballarat.vic.gov.au

Continuous Voices Memorial continued

PROPOSED PARK PRECINCTS

- ACTIVE EDGE
- SPORTS GROUNDS
- GRASSLANDS
- LAKES/WETLANDS
- SOUTH EAST ENTRY
- EQUESTRIAN
- SOUTH WEST CORNER
- MULLOCK HEAP & VELODROME
- HISTORIC GROVE PLANTING
- BUILDING FOOTPRINTS
- CHANGED GRASSLANDS
- POTENTIAL URBAN RENEWAL INTERFACE

Victoria Park Precinct



Timeline and Next Steps

Design Phase

November 2023 - June 2024

Tender

July 2024 - September 2024

Construction Phase

October 2024 - April 2026

Final Delivery

April 2026 - May 2026

Note: All project costs are subject to inflationary pressures leading to cost escalations

Evan King, Chief Executive Officer
 ☎ 5320 5500 ✉ ceo@ballarat.vic.gov.au



Eastwood Community Hub

Images: Indicative design only

Project Cost

\$16.8 million

Investment Needed

- \$8.4 million

City of Ballarat Investment

- \$8.4 million

Project Description

Redevelopment of the Eastwood Leisure Complex to create a new, universally accessible, multi-use community facility with flexible meeting spaces, a medium-sized conference/community space, kitchen, and the provision of female-friendly facilities. The existing basketball stadium will be retained.

Community Benefit

The existing complex is no longer fit for purpose: parts are up to eight decades old, not universally accessible and not compliant with current regulations.

With its central location and easy access to public transport and parking, the centre is one of Ballarat's best used and most loved community facilities, attracting 60,000 visits annually, hosting 14,000 hours of programmed activity, and home to diverse groups from across Ballarat and the wider Central Highlands Region.

Why should Governments invest in this project?

Economic impact

\$41.5 million economic output during construction, up to \$1 million in economic output and more than \$396,000 in business turnover each year after completion.

Job Creation

- 106 jobs during construction, up to five jobs per year ongoing.

Social Inclusion

Ballarat Central and surrounding suburbs include a high percentage of lone-person households, at 34.6 per cent it is higher than the Victorian average of 24.7 per cent.

Eastwood Community Hub will help address this by delivering accessible and inclusive spaces, becoming a home for community organisations providing sports and fitness, dance and the arts, lifelong learning, hobbies and support.

A modern, universally accessible building will enable current groups to meet increasing demand and provide opportunities for additional community groups - including more than 30 local multicultural associations which regularly seek an affordable venue to host national days and community events - to use the facility.



Eastwood Community Hub continues on next page ➤

➤ Eastwood Community Hub continued

With its central location and easy access to public transport and parking, the centre is one of Ballarat's best used and most loved community facilities, attracting 60,000 visits annually.

Image: Indicative design only

Location

- 20 Eastwood Street, Ballarat Central

Status

- In progress - application to the Federal Government's Growing Regions Program for \$8.4 million

Timeline and Next Steps

Award Contract for Design Services

December 2023

Construction to commence

Mid to late 2024

Construction complete

December 2025



Note: All project costs are subject to inflationary pressures leading to cost escalations

Evan King, Chief Executive Officer
☎ 5320 5500 ✉ ceo@ballarat.vic.gov.au



Integrated Transport Strategy

Project Cost

\$300,000

Investment Needed

- \$200,000

City of Ballarat Investment

- \$100,000, in partnership with Central Goldfields, Golden Plains, Hepburn, Moorabool and Pyrenees Shires.

Project Description

An Integrated Transport Strategy (ITS) will guide planning and investment in transport infrastructure and services across Ballarat and the surrounding region. It will aim to improve connectivity, accessibility, sustainability and overall quality of life for urban and rural residents in the region.

Current/emerging mobility challenges will be addressed, including:

- Car dependence
- Lack of efficient public transport systems or options
- Gaps in cycling and pedestrian links
- Lack of dedicated freight routes

The ITS will provide evidence-based clarity on current movement and constraints, and identify future regional social, economic and transport needs.

It will guide the planning, investment and maintenance of the transport infrastructure and services which support communities across the region.

Critically, it will allow for greater coordination between Victorian Government agencies and the six LGAs to meet the needs of residents and businesses in the short, medium and long term.

Community Benefit

An ITS is critical to the future liveability and prosperity of Ballarat and neighbouring municipalities, it will:

- Improve access to jobs, education and health services, and support businesses and jobs
- Support access to arts, culture, sport and recreation, and local retail and hospitality
- Improve connectivity, social inclusion, the health and wellbeing of residents
- Deliver environmental benefits brought by sustainable transport options including networks of walking and cycling paths, and improved public transport services



Integrated Transport Strategy continues on next page >

Note: All project costs are subject to inflationary pressures leading to cost escalations

Evan King, Chief Executive Officer
 ☎ 5320 5500 ✉ ceo@ballarat.vic.gov.au



Integrated Transport Strategy continued

The Strategy will guide targeted and coordinated investment in regional transport from all three levels of government.

Why should Governments invest in this project?

The ITS will guide targeted and coordinated regional investment in transport from all three levels of government.

Improved transport connectivity across the region is essential to enable growing and emerging industries (including tourism) to fully realise their potential – including links to ports, airports, inter-modal terminals and other regional and metropolitan centres.

Sustainable and multimodal transport will contribute to the reduction of greenhouse gas emissions, aligning with local, state, national and international environmental commitments.

Economic impact

A multi-faceted economic impact ranging from immediate job creation and a tourism boost, to long-term sustainability and economic growth.

It will serve as an economic catalyst, encouraging new businesses to invest here and support existing sectors and stakeholders, particularly those reliant on road freight.

Government funding for this transformative project is an investment in the economic prosperity and sustainability of the region.

Location

- City of Ballarat, Central Goldfields Shire, Golden Plains Shire, Hepburn Shire, Moorabool Shire, Pyrenees Shire

Status

- Ongoing advocacy by the City of Ballarat together with Central Goldfields, Golden Plains, Hepburn, Moorabool, and Pyrenees Shires

Timeline and Next Steps

- Establish an in-principle agreement between the six municipalities and the Victorian Government to commission an ITS

Note: All project costs are subject to inflationary pressures leading to cost escalations

Evan King, Chief Executive Officer
5320 5500 | ceo@ballarat.vic.gov.au

Kindergarten Upgrade Package

City of Ballarat is seeking government support to deliver its Kindergarten Infrastructure Pipeline, a key element of Council's Community Infrastructure Plan 2022-2037.

Council is planning ahead to ensure it can meet the demand for kinder places which has surged as a result of population growth and the Victorian Government's popular Best Start, Best Life Reforms which make kindergarten free for three and four-year-olds from 2023.

Building Blocks Partnership

These policy changes are driving the need for additional early years infrastructure, particularly in Ballarat's growth areas.

City of Ballarat is seeking a Building Blocks Partnership with the Victorian Schools Building Authority (VSBA) to deliver the critical early years infrastructure needed to increase kindergarten capacity across the municipality.

Existing Infrastructure

City of Ballarat owns 18 kindergartens across the municipality which are a mix of integrated and standalone settings consisting of one or two rooms of varying condition.

In the immediate term City of Ballarat is seeking funding support to increase capacity at these kindergartens:

- **Brown Hill Kindergarten Expansion**
\$2.7 million
- **Buninyong Kindergarten Upgrade and Expansion**
\$3.5 million
- **Delacombe Community Hub**
\$12.1 million
- **Delacombe Community Kindergarten**
\$3 million

FUNDED

- **Lucas Community Hub Expansion**
\$2.7 million

FUNDED

- **Sebastopol Community Hub**
\$4.5 million
- **Winter Valley Community Hub**
\$12.1 million



Kindergarten Upgrade Package continues on next page >

Note: All project costs are subject to inflationary pressures leading to cost escalations

Evan King, Chief Executive Officer
 ☎ 5320 5500 ✉ ceo@ballarat.vic.gov.au



Kindergarten Upgrade Package continued

Community Benefit

Kindergartens have numerous developmental benefits for young children:

- Enhancing school readiness and learning and development opportunities
- Children who attend a kindergarten program are less likely to be developmentally vulnerable at school
- Learning key skills including creative thinking, social and emotional skills, and early literacy and language skills
- Children in Year 3 who attended kindergarten were 15 to 20 weeks ahead of those who did not
- At 16, students who attended two to three years of kindergarten had higher scores in English and maths
- Government investment in early years education leads in the long term to higher productivity and earning capacity for children, and reduced government spending on health, welfare and crime

Why should Governments invest in these projects?

Address disadvantage

Data from the 2021 Australian Early Development Census shows Ballarat compares consistently with Australian and Victorian averages, with:

- 1 in 5 children vulnerable on at least one development indicator
- 1 in 10 children vulnerable on two or more development indicators
- However Ballarat has pockets of higher vulnerability with a significant increase in vulnerability experienced in these suburbs between 2018 to 2021:
- Mount Pleasant / Golden Point on all 4 domains (physical, social, emotional, language)
- Sebastopol 3 domains (social, emotional, language)
- Delacombe on 2 domains (social, emotional)

Respond to Government's Universal Kindergarten Policy

Local Government has been tasked with primary responsibility to provide the infrastructure needed to deliver on

the Victorian Government's early year's sector reform.

City of Ballarat Council needs a Building Blocks agreement to enable the roll out. Without such an agreement assuring delivery of kindergarten infrastructure for the next decade, Ballarat will have an infrastructure supply problem when future three-year-old kindergarten registrations match four-year-old kindergarten registrations.

Respond to Growth

Ballarat's population is projected to grow to 170,000 by 2041 based on an annual average growth rate of 2.1 per cent, an increase of 57,947 people.

New Growth Areas

Ballarat's three new growth areas - Northern, Western and North-Western - will be home to thousands of residents:

- Northern Growth area: 7,000 dwellings and 18,900 residents (forecast)
- North Western Growth Area: 7,000 dwellings and 18,900 residents (forecast)
- Western Growth Area: 14,000 dwellings and 37,800 residents (forecast)

Existing Growth Area - Ballarat West Growth Area (BWGA)

The BWGA, including Delacombe and Winter Valley, is projected to grow from 28,834 in 2023 to 48,500 people by 2036 (*forecast.id*).

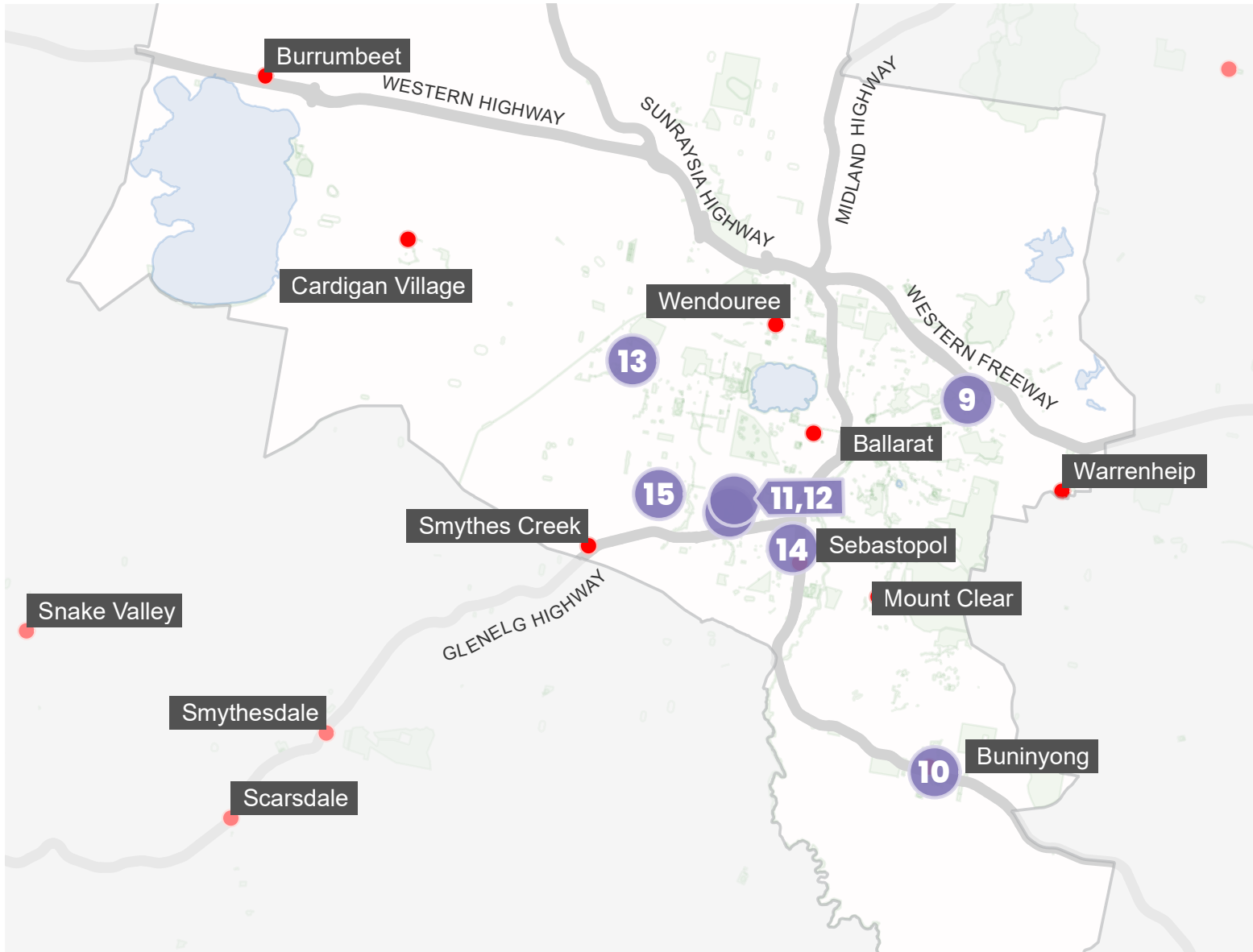
Location

- Multiple sites in multiple electorates across the municipality

Status

- Currently working to negotiate a Building Blocks Partnership with the VSBA
- Undertaking a review of the Kindergarten Infrastructure and Services Plan (KISP) which estimates the growth and demand for kinder in the LGA and identifies the number of kindergarten places required over time

Kindergarten Upgrade Package



Tier 2 Kindergarten Upgrade Package

- 9** Brown Hill Kindergarten Expansion
- 10** Buninyong Kindergarten Upgrade and Expansion
- 11** Delacombe Community Hub
- 12** Delacombe Community Kindergarten
- 13** Lucas Community Hub Expansion
- 14** Sebastopol Community Hub
- 15** Winter Valley Community Hub

Note: All project costs are subject to inflationary pressures leading to cost escalations

Evan King, Chief Executive Officer
 ☎ 5320 5500 ✉ ceo@ballarat.vic.gov.au

Kindergarten Upgrade Package

Brown Hill Kindergarten Expansion

Project Cost

\$2.7 million

Investment Needed

- \$1.5 million

City of Ballarat Investment

- \$1.2 million

Project Description

A third room to increase licensed places by 33, helping to address community need in this growing area.

The project will:

- Relocate the entrance to improve accessibility and provide a second outdoor space
- Deliver a larger staff administration area, small meeting room, additional toilets
- Formalise car parking

Community Benefit

Data from the ABS Census 2021 shows:

- Between 2016 -2021 Brown Hill experienced a population increase of 25.3 per cent
- A 29 per cent increase in the number of young families living in the area
- Children aged 0 - 4 years represent 8.5 per cent of the Brown Hill population, well above the Victorian average of 5.8 per cent

City of Ballarat's draft Housing Strategy identifies the potential for increased housing density in this area, which will further increase pressure on Brown Hill Kindergarten.

Why should Governments invest in this project?

Address Disadvantage

Many families who use Brown Hill Kindergarten are from adjacent suburbs in the SA2 area of Ballarat North which is identified as having higher proportions of households with low incomes, single parent families, lower levels of education, higher levels of housing stress and unemployment, transport accessibility issues and lower SEIFA scores.

Economic impact

- \$2 million

Job creation

- 13 jobs during construction

Location

- 1 Reid Court, Brown Hill

Status

- Detailed designs are complete
- Currently working to negotiate a Building Blocks Partnership with the VSBA

Timeline and Next Steps

- Anticipated construction timeframe 2024



Kindergarten Upgrade Package

Buninyong Kindergarten Upgrade and Expansion

Project Cost

\$3.5 million*

Investment Needed

- \$1.5 million

City of Ballarat Investment

- \$2 million

Project Description

Delivery of a well-designed integrated community facility with two maternal and child health consulting rooms, a third kinder room to increase licensed places by 33, waiting area, staff planning and lunchrooms.

Community Benefit

The kindergarten is at capacity and demand for places is high; expansion will ensure demand from the Buninyong community and surrounding areas can be met.

Why should Governments invest in this project?

An expanded kindergarten at Buninyong will have positive social impacts, addressing developmental vulnerability and enhancing school readiness for children.

Economic impact

\$2.6 million

Job creation

- 17 jobs during construction

Location

208 Learmonth St, Buninyong

Status

- Currently working to negotiate a Building Blocks partnership with the VSBA
- Architect has been appointed for the project
- Feasibility study underway

Timeline and Next Steps

- **Construction**
2025 (funding dependent)
- **Open**
2026

**Note: This project has not been fully costed and cannot be until the designs are complete*



Kindergarten Upgrade Package

Delacombe Community Hub

Project Cost

\$12.1 million

Investment Needed

- \$9.7 million

City of Ballarat Investment

- \$2.4 million - Council's contribution can be increased to cover any shortfall between project cost and funding received, including Development Contribution Plan funding.

Project Description

A new integrated early years facility with a 3-room x 33 place kindergarten, consulting rooms for maternal child health and other early years services, community meeting spaces for playgroups and first-time parent groups.

Note: The proposed library will be in a separate building

Community Benefit

This area is experiencing significant growth and is popular with families.

Why should Governments invest in this project?

Respond to growth

Data from the ABS Census 2021 (data for 2016-2021) for the Delacombe SA2 shows:

- A 69 per cent increase in the number of 0 - 4-year-olds (328 children) living in the area

- A 50.5 per cent population increase between 2016 to 2021 in the Delacombe SA2 (which includes Delacombe, Winter Valley, Bonshaw and Smythes Creek)
- A 55.9 per cent increase in the number of families living in the area
- Children aged between 0 - 4 years represent 7.5 per cent of the population, higher than the Victorian average of 5.8 per cent

The project is identified in the Ballarat West Precinct Structure Plan.

Location

- TBC - land not yet secured for the project

Status

- Currently working to negotiate a Building Blocks partnership with the VSBA

Timeline and Next Steps

- Concept design will begin in the 2024/25 financial year
- Potential for construction to begin in the 2026/27 or 2027/28 financial year - funding dependent



Kindergarten Upgrade Package

Delacombe Community Kindergarten Expansion

Project Cost

\$3 million

Investment Needed

- \$2 million

City of Ballarat Investment

- \$1 million

Project Description

Extension of Delacombe Community Kindergarten to increase the licensed places from 55 to 99.

The original part of the existing building was constructed in 1985, with a second room added in 2014.

Feasibility and concept planning is currently underway to determine the best approach to expand the facility.

Community Benefit

The project will provide locally accessible kindergarten places for young families in the Delacombe community and ensure children have access to play based learning.

Why should Governments invest in this project?

Respond to growth

The project addresses both the growth experienced in Delacombe and surrounding suburbs in recent years and projected growth for this area.

ABS Census 2021 data shows the percentage of children aged 0-4 in the Delacombe SA2 area is 7.5 per cent, which is higher than proportion of children aged 0-4 in the Ballarat Local Government Area (5.8 per cent).

The total population for the Delacombe area is forecast to increase by 69.4 per cent between 2023 and 2036, from 9,422 to 15,962. During the same period, Ballarat's population will increase by 21.6 per cent.

Policy alignment

Ensures City of Ballarat has the infrastructure to deliver on the Victorian Government's Best Start Best Life Policy reform.

Location

- 105 Whitelaw Ave, Delacombe

Status

- Currently working to negotiate a Building Blocks partnership with the VSBA
- Architect has been engaged to complete feasibility report to inform the scope of works and to develop concept plans

Timeline and Next Steps

- **Detailed designs** will begin 2024/25
- **Construction** is planned for 2026



Kindergarten Upgrade Package – FUNDED

Lucas Community Hub Expansion

Project Cost

\$2.5 million

Investment Needed

- \$1.5 million

City of Ballarat Investment

- \$1 million

Project Description

Expansion of the Lucas Community Hub to include an additional 33 place kindergarten room and an increase to outdoor space. A redesign of the entrance and kindergarten foyer, a laundry, storeroom, additional toilets and a staff planning room.

Community Benefit

The expansion will give the kindergarten capacity to provide additional programs, providing families with a high-quality, accessible, early years services close to home, supporting children in Lucas and surrounding areas to be 'school ready'.

Why should Governments invest in this project?

Economic impact

- \$1.6 million

Job creation

- 12 jobs during construction

Respond to growth

The population of Lucas nearly trebled between 2016 and 2021 (ABS Census 2021), with a higher than the Victorian average number of children in the 0–4-year-old age group.

Respond to Victorian Government policy

Delivering essential infrastructure to support demand created by the Victorian Governments Best Start, Best Life Reforms which make kindergarten free for both three and four-year-olds from 2023.

Location

- 17 Coltman Plaza, Lucas

Status

- Currently working to negotiate a Building Blocks partnership with the VSBA
- Awaiting the outcome of a \$1.5 million application to the capacity building grant stream

Timeline and Next Steps

- **Construction**
Planned for 2024 and is expected to take nine months



FUNDED

Lucas Community Hub Expansion
Project Cost \$2.5 million

Investment Secured

- \$1.5 million – Victorian Government Building Blocks Capacity Building Grant

City of Ballarat Investment

- \$1 million

Kindergarten Upgrade Package - FUNDED

Sebastopol Community Hub

Project Cost

\$14 million

Investment Needed

- \$4.5 million

City of Ballarat Investment

- Up to \$5 million

Australian Government Funding

- \$4.5 million

Project Description

The new hub will provide a contemporary and accessible home for user groups of the present Sebastopol Senior Citizens building, including the Sebastopol Senior Citizens, Ballarat Community Health, McCallum, and 1st Sebastopol Guides, and allow for use by new groups.

The early years component will provide 3 x 22 place kindergarten rooms for three and four-year-old children to facilitate the Victorian Government's Best Start early years reforms.

Community Benefit

The new Sebastopol Community Hub will provide a long-term home to community groups that use the present Sebastopol Senior Citizens Centre which is almost 50 years old and approaching the end of its lifespan.

Why should Governments invest in this project?

Economic impact \$32.2 million direct and indirect economic output during construction, with an additional \$31 million in economic impact over 25 years of operation

Job creation

- 68 full time equivalent (FTE) jobs during construction (14 direct, 54 indirect), eight FTE jobs ongoing



FUNDED

Sebastopol Community Hub
Project Cost \$14 million

Investment Secured

- \$4.5 million - Victorian Government Building Blocks Capacity Building Grant
- \$4.5 million - Australian Government Investing in Our Communities Program

City of Ballarat Investment

- \$5 million



Images: Indicative design only

Sebastopol Community Hub continues on next page ➤

Note: All project costs are subject to inflationary pressures leading to cost escalations

Evan King, Chief Executive Officer
☎ 5320 5500 ✉ ceo@ballarat.vic.gov.au

Sebastopol Community Hub Package continued

The early years component will provide 3x 22 place kindergarten rooms for three and four-year-old children to facilitate the Victorian Government's Best Start early years reforms.

Address disadvantage

Latest early years data identifies 31.1 per cent of Sebastopol children as vulnerable in one or more domain, which is much higher than the Ballarat average of 21.7 per cent.

Sebastopol has a high proportion of vulnerable people who live alone and a consistently higher level of unemployment than other areas in Ballarat and Victoria.

Sebastopol Community Hub will provide local low-cost activities and services for families facing financial hardship.

Plus co-location of kindergarten and early years childhood programs and services, including maternal and child health, parent groups and supported playgroups.

Location

- 250-256 Vickers Street Sebastopol

Status

- Currently working to negotiate a Building Blocks partnership with the VSBA
- Awaiting the outcome of a \$4.5 million application to the capacity building grant stream

Timeline and Next Steps

Request for tender for construction

January 2024

Award construction contract

March 2024

Construction of facility

April 2024 – May 2025

Note: All project costs are subject to inflationary pressures leading to cost escalations

Evan King, Chief Executive Officer
5320 5500 | ceo@ballarat.vic.gov.au

Kindergarten Upgrade Package

Winter Valley Community Hub

Project Cost

\$12.1 million

Investment Needed

- \$6.75 million

City of Ballarat Investment

- \$5.35 million – Council’s contribution can be increased to cover any shortfall between project cost and funding received, including Development Contribution Plan funding.

Project Description

An Integrated early years facility with a 3-room x 33 place kindergarten, consulting rooms for maternal child health and other early years services, community meeting spaces for playgroups and first-time parent groups.

Community Benefit

This area is experiencing significant growth and is popular with families. The new community hub will ensure residents have convenient access to kindergarten, maternal and child health, and other essential early years services.

Location

- TBD – land not yet secured for the project

Why should Governments invest in this project?

Responding to growth

Children aged 0–4 make up 10.1 per cent of Winter Valley’s population, almost double the Victorian average of 5.8 per cent.

The Ballarat West Growth Area, including Winter Valley, is projected to grow from 28,834 in 2023 to 48,500 people by 2036 (*forecast.id*).

Policy alignment

Ensures City of Ballarat has the infrastructure to deliver on the Victorian Government’s Best Start Best Life Policy reform.

Status

- Currently working to negotiate a Building Blocks partnership with the VSBA

Timeline and Next Steps

- **Concept design**
Will begin in 2024/25
- **Construction**
Potential to begin in 2027



Mair Street Upgrade Stage 2

Project Cost

Not costed (Victorian Government project)

Investment Needed

- TBD

City of Ballarat Investment

- None

Project Description

The upgrade of Mair Street from Davies Street to Sturt Street, via Dawson Street to improve safety, traffic flow and amenity.

Works include:

- Widening the majority of the street into a divided four lane roadway
- Removal of central median car parking
- Replacement of angle kerbside parking with parallel parking
- Upgrades to all signalised intersections
- Replace roundabouts with traffic signals at the Dawson and Grenville Street intersections

Community Benefit

Building on Mair Street Stage 1 works, the project will improve traffic flow along Mair Street, providing a more convenient route for heavy vehicle and other through traffic that currently travels along Little Bridge, Curtis and Sturt Streets.

Why should Governments invest in this project?

Support Ballarat CBD Business

Fewer cars in local CBD streets, supporting a more pedestrian-friendly environment, in turn encouraging the use of local streets for CBD-destination traffic only.

Improve Safety

Removal of centre median parking will improve pedestrian safety.

Improve Amenity

Additional tree plantings on the centre median will enhance amenity and extend the CBD tree canopy.

Location

- Mair Street from Davies Street to Sturt Street

Status

- City of Ballarat continues to advocate for Mair Street Upgrade Stage 2

Timeline and Next Steps

- TBD by the Victorian Government



Royal Park Community Hub, Buninyong Stage 2

Project Cost

\$2.4 million

Investment Needed

- \$1.2 million

City of Ballarat Investment

- \$1.2 million

Project Description

A new sustainably designed community hub for Buninyong Sustainability, Buninyong Soccer Club and other community groups. The facility will include a flexible multipurpose room, kitchenette, storage and office accommodation.

Community Benefit

Support the promotion of active, healthy lifestyles for Buninyong residents including, young people, by providing a permanent home for the Buninyong Soccer Club and a base for other community groups at Royal Park.

Why should Governments invest in this project?

Economic impact

- \$1.8 million

Job creation

- 12 jobs during construction

Social Impacts

A permanent home for local community clubs and organisations, a venue for the annual Smart Living Expo, enhancing Royal Park as a venue for community activities, sustainability initiatives and community sport.

Location

- 1101 Warrenheip Street, Buninyong

Status

- Concept design has been developed, detailed design to be completed

Timeline and Next Steps

- The project is currently slated for delivery in 2026/27

Images: Indicative design only



Victorian Goldfields World Heritage Bid

Project Cost

\$1.7 million

Investment Needed

- \$1.52 million – Victorian Government plus partnership co-contributions

City of Ballarat Investment

- \$180,000 subject to Council budget processes (over three years)

Project Description

This unprecedented region-wide project is a partnership between Ballarat and 14 other Victorian LGA's to secure World Heritage listing of the Victorian Goldfields to create social, cultural, and economic opportunities for regional communities and long term sustainable jobs.

The Victorian Goldfields World Heritage Journeys – Master Plan Implementation Stage 1 (Master Plan) provides the roadmap to equitably distribute the benefits of a World Heritage listing to over half a million people, across nearly 20 per cent of Victoria, primarily through sustainable tourism initiatives.

Community Benefit

The bid celebrates, protects and promotes the richness of the region's multi-layered history – from the First Peoples living on Country, to the Gold Rush and subsequent waves of immigration.

Delivery of the Victorian Goldfields World Heritage Journeys Master Plan aims to help uplift the socioeconomic condition and quality of life of communities in the Victorian Goldfields, regardless of their individual World Heritage status.

It will build community identity and pride, conserve heritage, stimulate socioeconomic revitalisation, and celebrate local culture.



Victorian Goldfields World Heritage Bid continues on next page >

Note: All project costs are subject to inflationary pressures leading to cost escalations

Evan King, Chief Executive Officer
☎ 5320 5500 ✉ ceo@ballarat.vic.gov.au



Victorian Goldfields World Heritage Bid continued

Delivery of the bid and the Master Plan will increase visitation to the Victorian Goldfields, leading to economic benefits worth \$1 billion for the region’s communities, businesses, and operators in the first decade.

Why should Governments invest in this project?

Economic Benefits

Delivery of the bid and the Master Plan will increase visitation to the Victorian Goldfields, leading to economic benefits worth \$1 billion for the region’s communities, businesses, and operators in the first decade.

By the tenth year following World Heritage listing, in comparison to business-as-usual tourism growth, there would be:

- An additional 2.2 million new visitors to the region

- An additional \$440 million spent in the local economy
- 1,750 additional jobs
- An increase of \$150 million in regional income (direct/indirect wages, salaries, profits for business)
- \$570 million additional investment in both hotel and family-type accommodation

Location

- Ballarat and 14 other Local Government Areas.

Status

- In 2023, the Victorian Government committed \$3.8 million over three years to take forward two World Heritage nominations, one being the Victorian Goldfields World Heritage Bid
- Victorian Goldfields World Heritage Master Plan development supported by a \$500,000 grant from Regional Development Victoria’s Investment Fast-Track Fund and \$125,000 in regional co-contributions

Timeline and Next Steps

The Victorian Goldfields World Heritage Master Plan is due for completion in December 2023

Australia Government will add the Victorian Goldfields to its World Heritage Tentative List in 2025*

A full nomination will be submitted to UNESCO by the Australian Government 2026/2027*

(* indicative dates only)

Yarrowee River Package

Project Cost

Up to \$5 million TBD – Fully scalable, detailed costings expected in early 2024

Investment Needed

- Up to \$5 million

City of Ballarat Investment

- Subject to Council budget processes

Project Description

New shared user paths completing missing links in the Yarrowee River Trail network, improved connections, upgraded landscaping in depleted sections, opportunities to improve biodiversity along the corridor. The project is focused on a 2.5 km section of the Yarrowee River.

Community Benefit

Yarrowee River is an extremely popular recreational trail, however missing links at various locations limit safe use along its full length, forcing families and children to cross dangerous roads (i.e. Grant Street). The project will create more safe, seamless, enjoyable connections that encourage activity, fitness, and social connection.

Many of the riparian areas are in a poor condition and often devoid of native vegetation, limiting the environmental benefits of the corridor. Planting of native vegetation will improve biodiversity, increase shade and resilience to climate change.

Why should Governments invest in this project?

Support and enhance one of Ballarat’s key natural assets as detailed in the Yarrowee River Masterplan.

Location

- North of the CBD (Central Business District) near Eastern Oval – both sides of the river
- South of the CBD along Anderson Street, Mill Street, and further south to Prest Street – both sides of the river

Status

- Design is well-progressed
- Detailed design and tender could begin from 2024 onwards subject to external funding

Timeline and Next Steps

- **Detailed Design** 12 months
- **Delivery** 12 months

