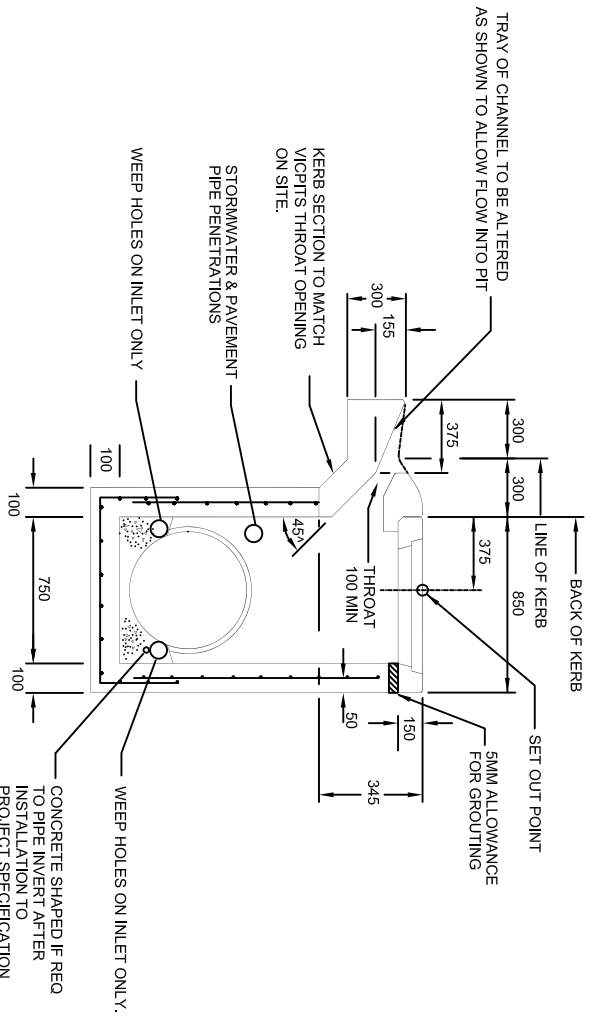


(SM OR B TYPE KERB)
PLAN

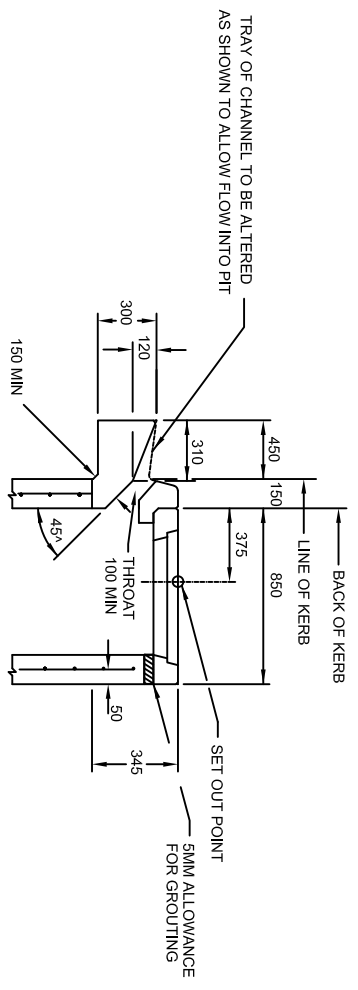
DEPTH	REINFORCEMENT	INTERNAL DIMENSION (mm)	ADDITIONAL INFORMATION
0-1200	F72	900 X 750	-
1200-2400	F92	900 X 900	STEP IRONS
2400-UP	F1218	900 X 900	LADDER

NOTES:

- HAUNCHING MAY BE REQUIRED FOR PIPES OVER 450 DIA. REFER TO PIT SCHEDULE FOR SIZES OF SPECIFIC PITS. PITS WITH HAUNCHING IN TWO DIRECTIONS.
- PITS ARE TO BE MANUFACTURED UNDER QUALITY PROCEDURES AND ENGINEERED COMPUTATIONS WHICH COMPLY WITH THE AUSTRALIAN BRIDGE DESIGN CODE 1992 WHICH STATE:
 - COMBINED FACTORED LATERAL PRESSURE AT ANY POINT AT THE ULTIMATE LIMIT STAGE SHALL BE NOT LESS THAN $8kPa$
 - ADEQUATE DRAINAGE SHALL BE PROVIDED TO PIT WALLS TO AVOID HYDROSTATIC PRESSURE
 - VERTICAL LOAD 210 kN APPLIED ANYWHERE ON PIT
 - MINIMUM REINFORCEMENT AREA SHALL BE 150 MM²/M
 - CONCRETE SHALL COMPLY WITH SECTION 610 OF VICROADS SPECIFICATIONS
- REINFORCEMENT AND CONCRETE PLACEMENT AND INSTALLATION COMPLY WITH VICROADS 610. THE RELEVANT AUSTRALIAN STANDARD SPECIFICATIONS AND STRUCTURAL DESIGNS.



SECTION B-B
PIT TYPE SM
(SM TYPE KERB)



SECTION B-B
(B TYPE KERB)

CITY OF BALLARAT

Approved by:

Notes on weepholes amended 13 8 18

No. AMENDMENTS

PRE-CAST SIDE ENTRY PIT CONCRETE COVER-900mm INLET

Date:



SCALE: **NOT TO SCALE**
SHEET 1 OF 2
DRAWING NO: SD-P1-1