



Circular Economy Precinct

Images courtesy of © Sustainability Victoria 2023

Project Elements/Cost

- Land: TBD
- Materials Recovery Facility (MRF): \$37.1 million
- Partnership with government and the private sector for CEP foundational infrastructure

Investment Needed

Land

- A 5.2 hectare parcel of land at the Ballarat West Employment Zone (BWEZ) to establish a Circular Economy Precinct (CEP)
- Applied in March 2023 to Development Victoria’s Stage 3B Circular Economy Precinct BWEZ Request for Expression of Interest process
- One and a half hectares of the land parcel will be set aside for a MRF

Materials Recovery Facility

- \$37.1 million for site infrastructure/ equipment costs, excluding land. The MRF is the foundational infrastructure for the CEP
- Current application to the Victorian Government’s Regional Recycling Fund for \$13.1 million toward MRF establishment costs, given the facility will service parts of the Grampians Central West Region

- Government assistance will be required to facilitate private investment to establish the MRF

Partnership

Seeking a three way partnership with government and the private sector to deliver the MRF.

City of Ballarat Investment

- \$4.8 million allocated for a CEP at BWEZ.

Project Description

A CEP, anchored by a MRF, will be a regional centre fostering a sustainable approach to waste management, innovation and job creation. It will:

- Make the region more self-sufficient in its waste management
- Ensure the value of recyclables is retained and enhanced locally
- Reduce transport costs and related emissions
- Deliver cost efficiencies for residents, councils and business



Circular Economy Precinct continues on next page ➤

Note: All project costs are subject to inflationary pressures leading to cost escalations

Evan King, Chief Executive Officer
 ☎ 5320 5500 ✉ ceo@ballarat.vic.gov.au

 Circular Economy Precinct continued

The Ballarat Regional MRF will have capacity to sort up to 30,000 tonnes of recyclables annually

The Ballarat Regional MRF will

- Have capacity to sort up to 30,000 tonnes of recyclables annually
- Including kerbside recyclables from City of Ballarat and councils in the Grampians West Region
- Provide opportunities for commercial and industrial commingled waste sorting and recycling

Community Benefit

Circular economy-focused solutions for City of Ballarat's waste streams will:

- Reduce the impact and costs associated with waste management
- Facilitate development of a true circular economy
- Show councils and governments are leading in approaches to environmental sustainability

Why should Governments invest in this project?

Emissions Reductions

A CEP and MRF will support the establishment locally of waste management businesses and infrastructure, reducing the need for the transportation of regional waste to metropolitan areas for processing.

This will mean:

- Annual savings of approximately 65,000 kms
- Almost \$750,000 savings in transport cost
- Associated emissions savings of approximately 65t CO₂-equivalent.

Job Creation

Jobs during construction, plus 68 FTEs (24 direct and 44 flow-on) once the MRF is operational

Responding to Government Policy

The project aligns with federal and state circular economy and recycling policies including:

- National Circular Economy Roadmap, National Waste Policy 2019
- Australian Infrastructure Audit 2019
- Recycling Victoria Policy
- Regional Recycling Fund
- Regional Circular Economy Plan Grampians Central West

Location

- Stage 3B of the Ballarat West Employment Zone (BWEZ) in Mitchell Park, Victoria (City of Ballarat LGA)

Status

- Discussions ongoing with the Victorian Government, via a multi-agency working group, into the feasibility of a CEP at BWEZ

- Currently preparing a Request for Tender process to establish a MRF in the CEP in collaboration with six neighbouring councils. Expected tender release mid-2024

Timeline and next steps

- Secure government support – land and funding – to facilitate delivery of the CEP
- Waiting to be advised if an application to the Regional Recycling Fund has been successful
- Land in Circular Economy Precinct at BWEZ is expected to become available by early 2025

Note: All project costs are subject to inflationary pressures leading to cost escalations

Evan King, Chief Executive Officer
 5320 5500  ceo@ballarat.vic.gov.au

Dyson Drive Duplication

Project Cost

\$67.9 million

- Planning and design: \$4.5 million
- Delivery: \$63.4 million

Investment Needed

- Detailed design and planning: \$4.5 million
- Balance of funding once design and planning (including land acquisition) is complete

City of Ballarat Investment

- Design and survey works: \$150,000 in the 2023/24 Council budget.

Project Description

Duplication of Dyson Drive between Remembrance Drive and Ballarat-Carngham Road to create a dual carriageway road and two service lanes. This project is the next stage of the Ballarat Link Road (BLR).

It will drive economic, jobs, and residential growth in the Ballarat West Growth Area (BWGA).

At full construction, Ballarat Link Road will create a 12-kilometre arterial link in Ballarat’s west, providing a regional freight connection between the Ballarat West Employment Zone (BWEZ), four major highways to western, northwest

and central Victoria, and to the port of Geelong.

Community Benefit

Upgrading Dyson Drive – the major north south arterial road used by residents in the growth suburbs of Alfredton and Lucas will:

- Facilitate the efficient movement of people and freight through Ballarat’s key residential growth area and BWEZ, the city’s centre of industry.
- Alleviate traffic congestion and traffic volumes
- Improve safety

Why should Governments invest in this project?

Economic impact

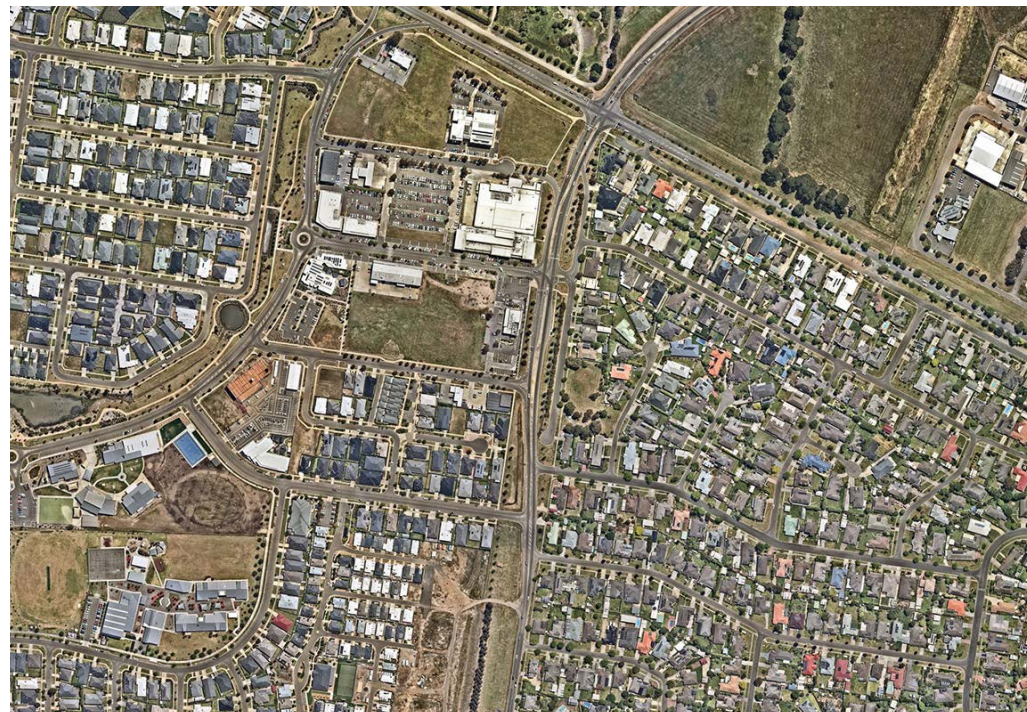
- Estimated at \$54.69 million (*Remplan September 2023*).

Job creation

- 293 jobs during construction (*Remplan September 2023*); support jobs in freight, logistics and manufacturing.

Traffic growth

Average daily traffic on Dyson Drive increased from 6,529 in 2016 in 10,490 in 2021.



Site Aerial as of 7 November 2023



Dyson Drive Duplication continues on next page ➤

 Dyson Drive Duplication continued

Duplication of Dyson Drive will support existing and future residential growth in Ballarat's fastest growing suburbs.

Residential growth

5,000 new residents moved into Alfredton, Lucas and Cardigan in the five years to 2022. Duplication of Dyson Drive will support existing and future residential growth in Ballarat's fastest growing suburbs.

At completion, the entire BWGA will be home to close to 48,500 people.

Economic growth and freight

This next stage of BLR will drive economic growth, linking BWEZ and Ballarat Airport to Geelong and Melbourne ports, creating increased economic opportunity for western Victoria.

Integration with Ballarat-Carngham Road upgrade

Planned duplication of Ballarat-Carngham Road is an enabler of future delivery of Dyson Drive duplication.

Duplication of Dyson Drive is the logical next major road project needed to service population and traffic growth in this area.

Location

- Dyson Drive, Alfredton. Between Remembrance Drive and Ballarat-Carngham Road

Status

- Detailed design works will commence early in 2024 to make the project tender ready, with completion between July-Dec 2024
- Business Case for the full length of BLR is currently being updated and due for completion late December 2024

Timeline and Next Steps

- Secure government funding
- Plan for land acquisition (est. 12 months for acquisition)

Cost of delivery of full length of Ballarat Link Road Next Stages

Stage 1a - Duplication of BLR between Western Freeway and Airport Road / Learmonth Road. To become a dual carriageway.

Total revised cost
\$34,118,640 as of 2/08/2023

Stage 1b - Duplication of BLR between Airport Road / Learmonth Road and Remembrance Drive. To become a dual carriageway.

Total revised cost
\$63,373,147 as of 2/08/2023

Stage 2a - Section between Remembrance Drive and Ballarat Carngham Road. Dual carriageway with service lanes.

Total revised cost
\$63,374,147 as of 2/08/2023

Stage 2b - Section between Ballarat-Carngham Road and Glenelg Highway. Dual carriageway with service roads.

Total revised cost
\$89,819,433 as of 2/08/2023

Stage 2c - Section between Glenelg Highway and Midland Highway. Single carriageway.

Total revised cost
\$109,568,225 as of 2/08/2023

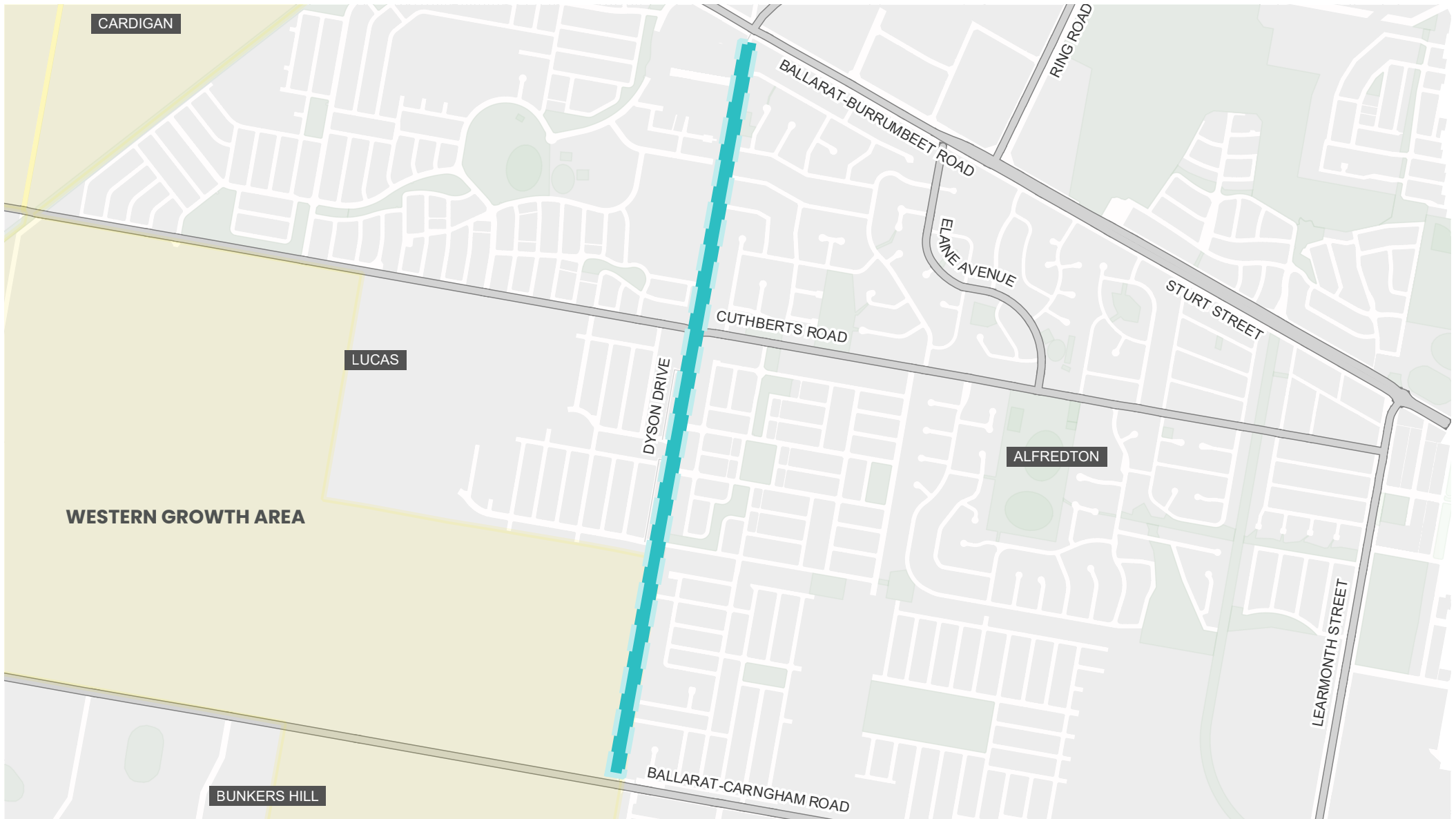
Total estimated Ballarat Link Road Next Stages project cost
\$360,816,677

Dyson Drive Duplication continues on next page 

Note: All project costs are subject to inflationary pressures leading to cost escalations

Evan King, Chief Executive Officer
 5320 5500  ceo@ballarat.vic.gov.au

> Dyson Drive Duplication continued



Note: All project costs are subject to inflationary pressures leading to cost escalations

Evan King, Chief Executive Officer
☎ 5320 5500 ✉ ceo@ballarat.vic.gov.au



Wendouree Library and Learning Centre

Images: Indicative design only

Project Cost

\$23 million

Investment Needed

- Up to \$23 million

City of Ballarat Investment

- TBD. City of Ballarat is seeking to partner with State and Federal Governments to deliver the project.

Project Description

The new Wendouree Library and Learning Centre (WLLC) will be a creative learning and community space offering a comprehensive library, to Parent Place services, a maker space, community study, activity and relaxation spaces, a café area and free Wi-Fi.

Community Benefit

The WLLC will be a safe, friendly, welcoming place in one of the city's most disadvantaged areas, a meeting place for residents of all ages to study, read and socialise.

Why should Governments invest in this project?

Economic impact

- \$17.8 million in economic impact throughout the construction process

Job creation

- Ongoing 8.96 full time equivalent, with 118.55 jobs during construction

Address disadvantage

The WLLC will address disadvantage by providing improved access to library and computer services for a highly disadvantaged local population.

Social isolation is a major issue for many people in the immediate area, however, the small size of the current library severely limits opportunities to run enough complementary learning and wellbeing programs to meet demand.



Site Aerial as of 3 November 2023

Wendouree Library and Learning Centre continues on next page >

Note: All project costs are subject to inflationary pressures leading to cost escalations

Evan King, Chief Executive Officer
 ☎ 5320 5500 ✉ ceo@ballarat.vic.gov.au

Wendouree Library and Learning Centre continued

The WLLC will meet the needs of Ballarat's new northern growth zone which is expected to be home to 18,900 new residents in the next 10-15 years.

Respond to Growth

The WLLC will meet the needs of Ballarat's new northern growth zone which is expected to be home to 18,900 new residents in the next 10-15 years.

It will also easy access for residents in the Ballarat West Growth Area which is forecast to accommodate 48,500 people by 2035-2040, and also for those living in small townships to the north and northwest of the City of Ballarat.

Voter appeal

The existing library, which is in a re-purposed shopfront at Stockland Wendouree is extremely small, has a limited collection and no capacity to expand programs to meet demand.

The concept for the WLLC has been warmly embraced during community engagement sessions.

Location

- On the edge of Weeramar Park, Gillies Street, Wendouree.

Status

- A more advanced needs-analysis of the social impacts for the area will be undertaken in early 2024

Timeline and Next Steps

Business case and soil testing
In progress

Detailed design process
To begin late 2024

Project shovel ready
Early 2026

Construction
Estimated to take 18-24 months

Note: All project costs are subject to inflationary pressures leading to cost escalations

Evan King, Chief Executive Officer
5320 5500 | ceo@ballarat.vic.gov.au