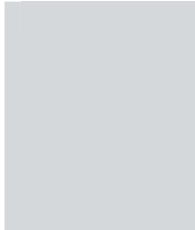


CITY OF BALLARAT



Sustaining growth. Strengthening communities.



Municipal Fire Management Plan 2015 – 2017 City of Ballarat

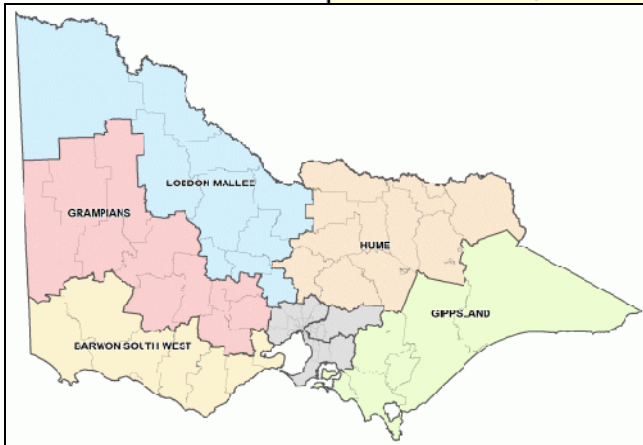


Figure 1: Map of Fairer Victoria Boundaries and the City of Ballarat Boundary

Foreword

Victoria is in one of the most bushfire-prone environments in the world. Our climate, native vegetation, landscape and weather conditions often combine to create an explosive environment in which bushfires can have a devastating impact on lives and property.

The safety of residents is a priority for the City of Ballarat, and this first version of the Municipal Fire Management Plan (MFMP) focuses on bushfire risk. Future versions of the MFMP will include information on prevention and management of structural fires, and on safe handling of hazardous materials.

The Fire Management Plan is the result of extensive collaboration and discussion between Council, government agencies and authorities, land owners and infrastructure operators such as telecommunications, electricity and gas companies. Members of the public, including individuals and community interest groups provided valuable input into the plan via a series of community engagement meetings.

The Municipal Fire Management Plan replaces the previous fire prevention plan. The Fire Management Plan is a sub plan of the City of Ballarat's Municipal Emergency Management Plan, which was endorsed and adopted by the City of Ballarat in 8th February 2012.

Ballarat's Municipal Fire Management Plan is part of a broader regional approach to fire preparation, management and response, and is therefore linked to the Grampians Regional Strategic Fire Management Plan. The Fire Management Plan is also consistent with the principles outlined in the Victorian Government's Integrated Fire Management Planning Framework (2007) and the State Fire Management Strategy (2009).

This Municipal Fire Management Plan has a life span of three years, 2015-2017, but will be reviewed annually in line with review of the overarching Municipal Emergency Management Plan, or importantly, after a fire event.

The Fire Management Plan clearly articulates an integrated fire management planning framework for the municipality which will achieve consistent and effective fire management planning. It is coupled with a firm commitment to a co-operative approach, including information sharing across all agencies and communities.

The Fire Management Plan incorporates risk-based planning using the Victorian Fire Risk Register to identify assets at risk, assess the level of risk, and record a range of measures and treatments to mitigate risks.

The Fire Management Plan's co-operative approach to fire management emphasizes the importance of bringing together all relevant agencies and organisations to build on existing relationships, and to ensure effective planning. This means improving the integration of existing work across agencies and organisations and developing new ways of working together.

Anthony Schinck
CEO City of Ballarat

City of Ballarat Municipal Emergency Management	Municipal Fire Management Plan Document. No.	Issue Date December 2011	Review Date September 2014	Version 1.5
---	--	-----------------------------	-------------------------------	----------------

Context Statement

This version of the MFMP has been endorsed as a plan to enable and inform organisational and agency planning. It is recognised that strategies and deliverables outlined in this plan will develop further with ongoing reviews.

The City of Ballarat acknowledges and thanks all who have contributed their time and considerable expertise to the development and review of this plan, with the goal of continual improvement to reducing the risk and effect of fire in the community.

All comments should be forwarded to:

Municipal Fire Management Planning Committee
 Executive Support Officer - Municipal Fire Prevention Officer
 City of Ballarat
 PO Box 655
 Ballarat VIC 3353

Version Control Table

Version number	Date of issue	Author(s)	Page No.	Brief description of change
1.0	18 October 2011	V Collins, M Cartledge, IFMP Team, MFMP Committee	All	Full document
1.1	5 December 2011	V Collins	Page iii	Removed D Kelly endorsement and signature
1.2	5 December 2011	IFMP Team	Page iii	Add the Partner agencies and stakeholder statement
1.3	20 December 2011	M Cartledge	Page 1	Statement of engaging none MFMP organisations to commitment to the identified treatments in the works plans.
1.4	June 2013	Amendments – Grampians State Fire Management Planning Support Team	All	Updated Section 3.7, Chapter 5, Section 6.5, Appendix A, B, C.2, C.3 and H. Changed Township Protection Plan (TPP) to Community Information Guide (CIG). Inclusion of Disclaimer, new Section 6.3 – Plan Reporting and change existing Section 6.3, 6.4, to the next sequence. As of 1 May 2013 Department of Sustainability and Environment (DSE) and Department of Primary Industries (DPI) have jointly combined to form Department of Environment and Primary Industries (DEPI). All previous DSE treatments are still valid and this name change will be reflected in the next iteration of this plan.
1.5	Sept 2014	B Cook, M Cartledge	All	Formatting and review
1.6	Jan 2015	M Cartledge	All	As of 1 January 2015 Department of Environment and Primary Industries (DEPI) underwent a name change to Department of Environment, Land, Water and Planning

Disclaimer - Hardcopies of this document are considered uncontrolled. Please refer to the City of Ballarat website for the latest version.

Part One: Introductory Information


Page ii of vi

City of Ballarat Municipal Emergency Management	Municipal Fire Management Plan Document. No.	Issue Date December 2011	Review Date September 2014	Version 1.5
---	--	-----------------------------	-------------------------------	----------------


Authorisation

This integrated MFMP was adopted and endorsed by the City of Ballarat as the first iteration of the City of Ballarat's MFMP in partnership with the agencies listed below.


This Plan was endorsed through a formal motion by the City of Ballarat MFMPC at their meeting on 29 October 2014 for which the Chair of the committee will sign for and on behalf of all members of the City of Ballarat MFMPC.

Signed 
Mark Cartledge
 Chair
 City of Ballarat Municipal Fire
 Management Planning Committee

Date 19-OCTOBER 2015
Plan endorsed by:
 Municipal Fire Management
 Planning Committee

Signed 
Bill Cook
 Municipal Emergency Manager
 City of Ballarat

Date 19/10/2015
Plan endorsed by:
 Municipal Emergency
 Management Planning
 Committee

Signed 
Anthony Schinck
 Chief Executive Officer
 City of Ballarat

Date 19/10/15
**Plan endorsed and
 by Council**

Partner agencies and other stakeholders with actions assigned to them in this plan and who are not members of the City of Ballarat MFMPC, are represented on Grampians RSFMP and have reviewed and commented on the City of Ballarat MFMP which was noted at the Grampians RSFMP meeting held on 20 May 2015.



Part One: Introductory Information

City of Ballarat Municipal Emergency Management	Municipal Fire Management Plan Document. No.	Issue Date December 2011	Review Date September 2014	Version 1.5
---	--	-----------------------------	-------------------------------	----------------

Table of Contents

Foreword	i
Context Statement	ii
Version Control Table.....	ii
Authorisation.....	iii
Table of Contents.....	iv
Appendices	vi
1 Introduction	1
1.1 Membership of the City of Ballarat Municipal Fire Management Planning Committee	2
1.2 Role of the Municipal Fire Management Planning Committee.....	2
2 Engagement and Communications	3
2.1 Stakeholder Analysis.....	3
2.2 Communications Objectives.....	3
2.3 Communication and Engagement Principles.....	3
2.3.1 Stakeholder and Community Consultation and Engagement	3
2.3.2 Communications	4
2.3.3 Submissions.....	4
2.3.4 Key Engagement Process to Develop the Municipal Fire Management Plan.....	4
3 Environmental Scan	5
3.1 Location and Tenure	5
3.2 Our Traditional Owners.....	5
3.3 Natural Environment.....	5
3.4 Land Use	5
3.5 Climate and Bushfire Season	5
3.6 Population and Demographics.....	6
3.7 History of Fire and Ignition Causes	7
3.8 Future Fire Management Implications	8
4 Municipal Fire Management Objectives	9
4.1 Objectives/Outcomes	9
4.2 Strategic Directions	9
4.3 Links to other Business Planning and Programs	10
5 Fire Risk Management Strategies	11
5.1 Risk Assessment Methodologies	11
5.1.1 Analysis and Prioritisation of Municipal Bushfire Risk	11
5.1.2 Alignment to Regional Bushfire Risk Objectives	11
5.1.3 Treatment of Municipal Bushfire Risk	12
5.1.4 Analysis and Prioritisation of Municipal Structure Fire Risk	15

City of Ballarat Municipal Emergency Management	Municipal Fire Management Plan Document. No.	Issue Date December 2011	Review Date September 2014	Version 1.5
---	--	-----------------------------	-------------------------------	----------------

5.1.5	Structure Fire Risk Management Objectives	16
5.1.6	Treatment of Municipal Structure Fire Risk	17
5.1.7	Analysis and Prioritisation of Municipal Hazardous Materials Incident Risk.....	19
5.1.8	Hazardous Materials Incident Risk Management Objectives	20
5.1.9	Treatments of Municipal Hazardous Materials Incident Risk.....	21
5.2	Community Information Guide	23
5.3	Neighbourhood Safer Places – Places of Last Resort.....	23
5.4	Strategic Fire Break Definitions	23
5.5	Community Fire Refuges	23
5.6	Individual Bushfire Risk Treatments.....	23
5.6.1	Vegetation Management Rights.....	24
5.6.2	Permit to Burn.....	24
5.6.3	Private Property Inspections and Fire Prevention Notices	24
5.6.4	Planning Permits.....	24
5.7	Cross Boundary Arrangements	25
6	Plan reporting, review and improvement	26
6.1	Legislative responsibilities.....	26
6.2	Plan endorsement and adoption	26
6.3	Plan Reporting.....	26
6.4	Plan audit.....	26
6.5	Plan amendment and review	26

City of Ballarat Municipal Emergency Management	Municipal Fire Management Plan Document. No.	Issue Date December 2011	Review Date September 2014	Version 1.5
---	--	-----------------------------	-------------------------------	----------------

Appendices

- Appendix A** **Asset Risk Management Register**
- A.1 Multi Agency Bushfire Asset Risk Management Register
 - A.2 Structure Fire Risk Management Register
 - A.3 Hazardous Materials Incident Risk Management Register
- Appendix B** **Multi Agency Work Plan**
- B.1 Multi Agency Bushfire Work Plan
 - B.2 Multi Agency Structure Fire Work Plan
 - B.3 Multi Agency Hazardous Materials Incident Work Plan
- Appendix C** **Statutory Audit Obligations**
- C.1 Hazard Trees Identification and Notification Procedures
 - C.2 Community Information Guide
 - C.3 Neighbourhood Safer Places – Places of Last Resort
 - C.4 Community Fire Refuges
- Appendix D** **Engagement and Communications Strategy**
- Appendix E** **Maps**
- E.1 Municipality Map
 - E.2 Strategic Fire Breaks Map and Table
- Appendix F** **Terminology**
- Appendix G** **Acronyms**
- Appendix H** **List of Tables**
- Appendix I** **Bibliography**

City of Ballarat Municipal Emergency Management	Municipal Fire Management Plan Document. No.	Issue Date December 2011	Review Date September 2014	Version 1.5
---	--	-----------------------------	-------------------------------	----------------

1 Introduction

This integrated Municipal Fire Management Plan (MFMP) is risk based, has regard to the social, economic, built and natural environment aspects of fire and guides participants involved in fire management activities. It is consistent with the Municipal Emergency Management Plan (MEMP) to ensure that the linkages across fire Preparedness, Prevention, Response and Recovery (PPRR) programs are consistent and holistic. The plan also contains appropriate reference to other uses of fire, including agricultural, ecological and cultural applications, and replaces the existing Municipal Fire Prevention Plan (MFPP).

Authority for this plan is derived from the *Emergency Management Act 1986* (the Emergency Management Act), which provides that a Municipal Emergency Management Planning Committee (MEMPC) must give effect to any direction or guideline issued by the Co-ordinator in Chief (Section 21 (5)). In the country area of Victoria, a MFMP prepared and endorsed in compliance with guidelines contained within *Part 6A of the Emergency Management Manual Victoria*, will be deemed to fulfil Section 55A of the *Country Fire Authority Act 1958* (the CFA Act).

The purpose of this integrated MFMP is to chart the planned and coordinated implementation of measures designed to minimise the occurrence, and mitigate the effect of bushfire, grass fire, residential and industrial fires in the community. The plan is based on the Integrated Fire Management Planning (IFMP) framework.

The IFMP framework is designed to operate under existing fire and emergency management legislation and therefore does not replace existing statutory roles and responsibilities. The framework aims to support and enhance statutory requirements through government and agencies working together.

The first version of the City of Ballarat's integrated MFMP seeks to achieve consistent and effective fire management planning within the municipality through commitment to cooperation, including sharing and building of collective knowledge and experience at municipal and regional levels.

Critical to the success of IFMP is the ongoing building and maintaining of relationships across government, the private sector and the broader community. Participation, support and cooperative decision making by all these sectors working in collaboration to develop fire PPRR strategies, programs and plans for all types of fire risk, and meeting the needs of local communities are all essential for effective implementation of IFMP.

This City of Ballarat MFMP is an integrated plan combining plans from the Council, the Department of Environment, Land, Water and Planning (DELWP), Country Fire Authority (CFA), VicRoads and other key stakeholders.

It is acknowledged that the existing Municipal Fire Prevention Plan (MFPP) and the Municipal Emergency Management Plan (MEMP) were developed using the principles of risk management and have undergone several reviews to ensure their relevance and that they meet community needs and expectations.

This MFMP has been prepared by the City of Ballarat MFMPC in accordance with the IFMP process. It addresses both public and private land across the prevention, preparedness, response and recovery continuum.

The integrated MFMP will be reviewed and updated annually to ensure it incorporates any new strategies, programs and tools developed by the State Fire Management Planning Committee (SFMPC) and Grampians Regional Strategic Fire Management Planning Committee (RSFMP) to ensure it meets Council and community needs and expectations.

Inclusion of representatives from Municipal Fire Prevention Committees on the Municipal Fire Management Planning Committee (MFPPC) has ensured that knowledge and experience in fire management is not lost in the transition from the MFPP to the MFMP. This MFMP needs to be considered as the first step in an evolutionary process of transition from the current MFPP.

The initial planning process focused on a Municipal level identification and assessment of risks using the Victorian Fire Risk Register (VFRR) process. The Municipal Fire Management Planning Committee (MFMPC) then validated this work, completed an analysis that resulted in a range of measures to mitigate the risk. These measures, or treatments, were then linked to the appropriate agency plans.

Initial development of the plan has been undertaken by representatives of the various agencies that comprise the MFMPC as listed in section 1.1.

All works programs listed within the Municipal Fire Management Plan (MFMP) that have had treatments listed against assets have been collated by either the organizations having input into the MFMP or direct contact to private owner/operators. Private assets that are not presented on the MFMPC have had either the City of Ballarat MFPO and/or a representative from the IMFP contact them to enquire what works area undertaken to assist with the protection of their property/assets during the fire danger period. This process was completed at a local or regional level prior to the draft MFMP being completed.

The MFMP is not designed to be a duplication of existing plans rather it is to consolidate and coordinate the significant range of plans that exist within City of Ballarat that relate to fire.

Part One: Introductory Information

City of Ballarat Municipal Emergency Management	Municipal Fire Management Plan Document. No.	Issue Date December 2011	Review Date September 2014	Version 1.5
---	--	-----------------------------	-------------------------------	----------------

1.1 Membership of the City of Ballarat Municipal Fire Management Planning Committee

Membership of the City of Ballarat Municipal Fire Management Planning Committee (MFMPC), as appointed by the Municipal Emergency Management Planning Committee (MEMPC), will comprise of representatives from key agencies and organisations, including:

- City of Ballarat representatives
- Central Highlands Water (CHW)
- CFA
- DELWP
- Federation University Ballarat Campus
- VicRoads
- Victoria Police
- Victoria SES

Other agencies or organisations maybe co-opted as the need arises.

1.2 Role of the Municipal Fire Management Planning Committee

Provides a municipal level forum to build and sustain organisational partnerships, generate a common understanding and shared purpose with regard to fire management, and ensure that the plans of individual agencies are linked and complement each other.

The City of Ballarat's MFMP functions under Section 55 of the CFA Act are:

- plan the burning or clearing of firebreaks;
- advise the appropriate authorities as to the existence of and steps to be taken for the removal of fire hazards within the area;
- advise and make recommendations to the municipal council in the preparation of its MFPP and MFMP;
- recommend to CFA or to the appropriate authorities (as the case may require) any action which the committee deems necessary or expedient to be taken for reducing the risk of an outbreak of fire or for suppressing any fire which may occur within the area;
- advise the fire prevention officer concerning the removal of fire hazards under Section 41 of the CFA Act;
- refer to the Regional Strategic Fire Management Planning Committee (RSFMPC) for consideration of all matters which in the opinion of the MFMP should be so referred; and
- carry out such other functions as are conferred or imposed upon MFMP by regulations made upon the recommendation of the authority.

The preparation of this MFMP has involved the experience of agencies and authorities charged with responsibilities for fire management, local CFA brigades and community consultation. This collaboration has ensured the development of a holistic and integrated approach to fire management across all land users, and that the strategies adopted were based on practical local knowledge and common sense.

A further role of the Grampians RSFMPC is to ensure that any risks that cross municipal boundaries are treated in a seamless and consistent manner, regardless of land tenure.

City of Ballarat Municipal Emergency Management	Municipal Fire Management Plan Document. No.	Issue Date December 2011	Review Date September 2014	Version 1.5
---	--	-----------------------------	-------------------------------	----------------

2 Engagement and Communications

2.1 Stakeholder Analysis

Stakeholders involved in fire management planning in City of Ballarat have been categorised into three groups according to their chosen levels of participation in integrated fire management planning and their information requirements.

This stakeholder analysis informed the development of a communications and engagement strategy which will develop a shared understanding of how communications will occur, when communications will occur and why communications will occur. This will increase efficiencies, reduce duplications and provide consistent messaging through the implementation of IFMP in the City of Ballarat. (Refer to Appendix D – Engagement and Communications Strategy).

2.2 Communications Objectives

The achievement of fire management objectives and the success of fire management outcomes will be dependent on effective communications in all planning and implementation phases. The objectives of the communications plan will be to:

- build a collaborative approach to integrated fire management planning;
- identify internal communication flows within organisations;
- ensure that communication across agencies is effective in developing a shared understanding of the issues and key responsibilities and that all agencies deliver a consistent message to the community and their stakeholders;
- support a greater commitment to IFMP;
- build resilient relationships and sound networks between key stakeholders;
- consult with communities so that local knowledge is captured in the planning process that the communications plan supports;
- foster better communication and planning between the agencies and local communities; and
- achieve greater consistency from all levels of government on key policy issues.

2.3 Communication and Engagement Principles

Guided by a multiagency approach the City of Ballarat, together with the CFA, DELWP and Victoria Police recognise the value of local knowledge and the unique contribution the community can make to the MFMP planning process.

Effective community engagement in fire management planning is required to:

- promote acceptance, understanding and joint problem solving;
- raise knowledge and skills of fire management through participation;
- produce plans that support community and organisational expectations; and
- incorporate community and organisational needs into the development of plans.

2.3.1 Stakeholder and Community Consultation and Engagement

A stakeholder and community engagement strategy sets out a time specific consultation program, which features:

- community information sessions held in the City of Ballarat targeting high-risk communities;
- stakeholder briefings to be held in the City of Ballarat for special interest organisations as required; and
- online engagement program during the consultation period.

City of Ballarat Municipal Emergency Management	Municipal Fire Management Plan Document. No.	Issue Date December 2011	Review Date September 2014	Version 1.5
---	--	-----------------------------	-------------------------------	----------------

2.3.2 Communications

An extensive communications plan was held to support the consultation program and raise awareness among the general community about the role of the MFMP and CIG's.

2.3.3 Submissions

At the conclusion of consultation the period, the City of Ballarat together with MFMPC reviewed, assessed and responded to community submissions and updated MFMP accordingly.

2.3.4 Key Engagement Process to Develop the Municipal Fire Management Plan

Figure 1 below describes the key engagement process involved in the development of the MFMP.

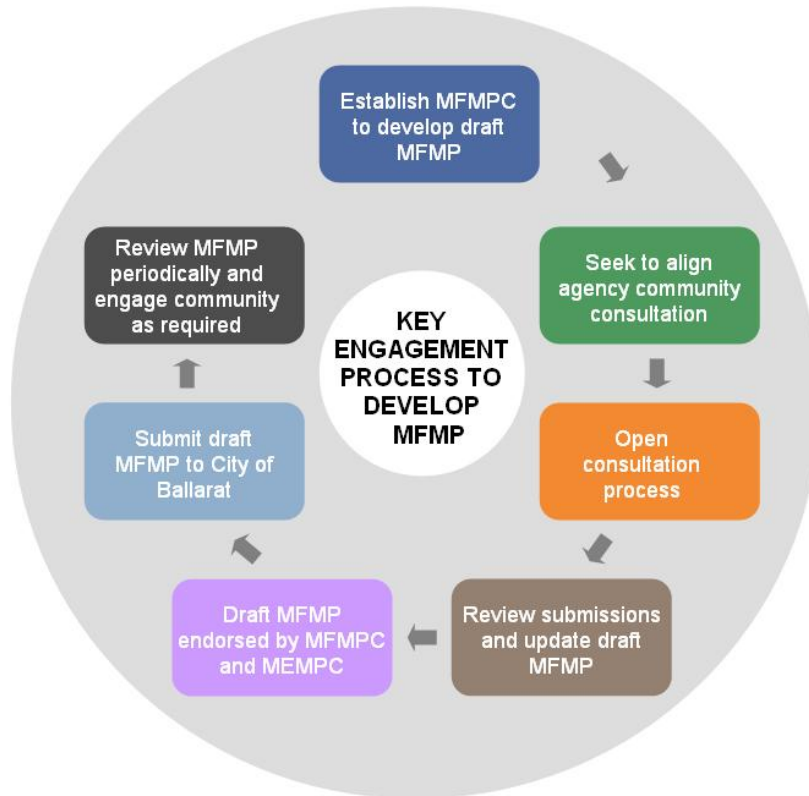


Figure 2: Key Engagement Process to Develop the MFMP

City of Ballarat Municipal Emergency Management	Municipal Fire Management Plan Document. No.	Issue Date December 2011	Review Date September 2014	Version 1.5
---	--	-----------------------------	-------------------------------	----------------

3 Environmental Scan

3.1 Location and Tenure

The City of Ballarat is located in the Grampians Region, strategically located in the Central Highlands Region of Victoria, and surrounded by the municipalities of Hepburn, Pyrenees, Golden Plains and Moorabool. Ballarat is 115 kilometres west of Melbourne and just over one hour drive on the Western Highway. Ballarat is one of Australia's largest inland cities and the third largest city in Victoria

The municipality covers some 740 square kilometres of a wide range of land types from steep incised areas to the northwest and northeast of the City to the flatter basaltic plains of the southwest area, and to the south. Significant land managers in the municipality include the City of Ballarat and DEPI

3.2 Our Traditional Owners

City of Ballarat acknowledges the Indigenous history of the municipality. The land is part of an area traditionally under the custodianship of the Wathaurong people and we respect the spirits of their ancestors among us.

3.3 Natural Environment

The City of Ballarat is bordered by undulating mountainous country with typically high rainfall and significant dry sclerophyll forest over much of the area on the eastern boundary of the municipality. The western and northern side are characterised by rolling hills, medium to lower rainfall and broad acre farming.

The City of Ballarat is located within the upper-most portions of three major river basins. These are known as the Barwon, Hopkins and Loddon River catchments.

A number of reservoirs are located throughout the municipality, the largest being the White Swan Reservoir located to the north-east of the City.

There are three major lakes within the Municipality boundary. Lake Burrumbeet and Lake Learmonth are located in rural parts of the Municipality and Lake Wendouree is located in the urban part of Ballarat, which is a major tourist attraction for the area.

3.4 Land Use

To the middle and south of Ballarat are extensive open grass farmlands which are also used for mixed primary production. There are a number of small hamlets and farming communities located throughout the municipality. Topographically very diverse, City of Ballarat has many areas of rich quality soil which provide the base for important horticultural, cropping and grazing activities such as canola, prime lamb, beef and viticulture production. Ballarat is also home to almost 200 manufacturing businesses producing a wide range of products for local and international markets.

Areas of poorer quality soils have not been cleared for agriculture and much remains as public land. Floristically rich, these localities are prized habitats for native fauna. The forests are used for beekeeping, water-catchment protection, outdoor recreation activities and for flora and fauna conservation.

3.5 Climate and Bushfire Season

The climate in the Ballarat area is dominated by warm dry summers and cool wet winters. In recent years there has been a significant decrease in average spring and autumn rainfalls. The bushfire season generally runs from December to April.

Prevailing weather conditions associated with the bushfire season in the City of Ballarat area are warm to hot north westerly winds accompanied by high temperatures and low relative humidity followed by a cool south westerly change.

Ballarat experiences a temperate climate with four seasons. Because of its elevation at 450 metres above sea level, mean monthly temperatures tend to be on average 2-3 degrees below those for Melbourne. The mean daily maximum temperature for January is 25 degree celsius, while for July it is 10 degree celsius with the annual mean maximum temperature 17.4 degree celsius and an annual mean minimum temperature is 7 degree celsius. Ballarat has an annual mean rainfall of 691mm, with the wettest months being May (64.1mm), June (63mm), July (66.4mm), Aug (74.6mm), Sept. (71.5mm) and October (67.0mm) (BoM website http://www.bom.gov.au/climate/averages/tables/cw_089002.shtml).

Under the State Government climate change projections, City of Ballarat can expect:

- to be hotter with the greatest increases in temperature expected in summer;
- to be drier with greatest decreases in rainfall expected in spring; and
- to have fewer rainy days but increasing rainfall intensity.

City of Ballarat Municipal Emergency Management	Municipal Fire Management Plan Document. No.	Issue Date December 2011	Review Date September 2014	Version 1.5
---	--	-----------------------------	-------------------------------	----------------

3.6 Population and Demographics

The municipality has a population of approximately 99,474 (Forecast id, 2014) and expects an annual growth rate of 2.2% over the next 5 years. Victoria in Future 2014 Population Projections suggests that Ballarat's population will reach 142,000 by 2031. The 2011 ABS data reported the density of people to be 1.33 people per hectare.

This increase reflects the interest in the municipality as a place to live and work outside of Melbourne. The urban settlement patterns offer a diversity of living environments, including small villages and country towns, as well as the main cityscape of central Ballarat.

The main population centre of the municipality is the urban area of Ballarat. Ballarat is a major regional service centre in Victoria's mid-west. The city is characterised by huge horizons, spectacular mountain scapes and a vibrant sense of community. Ballarat has excellent schools, hospitals and the amenities that support a comfortable lifestyle. Ballarat was originally a gold town and the town centre has a rich intact legacy of historic sites and buildings.

Ballarat has more people living in disadvantaged circumstances than Victoria as a whole (as measured via the Socio-economic Indexes for Areas SEIFA). The Index of Relative Socio-Economic Disadvantage is derived from attributes such as low income, low educational attainment, high unemployment, jobs in relatively unskilled occupations and variables that broadly reflect disadvantage rather than measure specific aspects of disadvantage (e.g., Indigenous and Separated/Divorced).

High scores on the Index of Relative Socio-Economic Disadvantage occur when the area has few families of low income and few people with little training and in unskilled occupations. Low scores on the index occur when the area has many low income families and people with little training and in unskilled occupations. It is important to understand that a high score here reflects lack of disadvantage rather than high advantage, a subtly different concept.

Township / Suburb	Population 2011	Estimated no. of Dwellings 2011	Average Household Size 2011	SEIFA Index of disadvantage 2011
Alfredton	7275	2689	2.72	1047
Ballarat Central / Bakery Hill	5886	2839	2.19	1001
Ballarat East/Brown Hill	8165	3838	2.22	947
Ballarat North/Invermay	5903	2555	2.42	1022
Bonshaw/Smythes Creek	535	172	3.15	1040
Buninyong/Rural South	4122	1550	2.72	1058
Cardigan/Lucas/Bunkers Hill	918	302	3.06	1053
Delacombe	4997	1962	2.66	961
Golden Point/Mt Pleasant/Canadian	7617	3318	2.47	976
Lake Wendouree/Newington/Lake Gardens	6380	2740	2.36	1053
Miners Rest/Mitchell Park	3779	1424	2.82	1049
Mount Clear/Mount Helen	5801	2193	2.63	1047
Redan	3029	1607	2.03	898
Rural East	2508	901	2.84	1067
Rural West (including Learmonth & Cardigan Village)	1937	810	2.54	1028
Sebastopol	9577	4356	2.25	897
Soldiers Hill/Black Hill/Nerrina	5703	2543	2.38	999
Wendouree	10870	4988	2.20	867

(Source: ABS 2011 Census)

City of Ballarat Municipal Emergency Management	Municipal Fire Management Plan Document. No.	Issue Date December 2011	Review Date September 2014	Version 1.5
---	--	-----------------------------	-------------------------------	----------------

3.7 History of Fire and Ignition Causes

Significant fires in the Ballarat area of recent times have been relatively few, but there has been potential for significant impact on residential and some commercial properties due to their proximity to the bushland interface area.

A summary of major bushfires is depicted below.

Year	Fire Name	Ignition Causes
2009	Mt Clear Fire (32 hectares pine plantation)	Arson
2006	Waubra Fire (550 hectares)	Escaped burn from private property
2000	Mt Helen Fire (52 hectares)	Escaped burn from private property
1997	Creswick Fire (1609 hectares)	Arson

Table 2: Summary of major bushfires

Significant Structure Fires

A summary of significant structure fires in the Ballarat area is depicted below.

Year	Building Name
1930-1939	Ballarat Regent Theatre
	Coliseum
1940-1949	Ballarat Regent Theatre
1950-1959	S.R. Dickens Store on the north side of Bridge Mall
1970-1979	5 Shops on the south side of Sturt Street and on the east side of Town Hall Lane
	5 Shops on the south side of Sturt Street between Raglan and Errard Streets.
	St John of God Hospital
1980-1989	St John of God Hospital
	Ballarat Rail Way Station
	George Hotel
	Power Station in Dawson Street
1990-1999	Restaurant on Camp Street
	Wilkinson Bus Depot, Anderson St West
	Christies Ice Works
2000-2009	Ray Drummond Golf Store on Doveton Street
	Matheson's Joinery, Water Street, Brown Hill
	VicPine, Vickers St, Sebastopol
	St John of God Hospital
2010-	Factory, Industrial Ct, Delacombe
	Plaster Fun House Grenville St Ballarat Central

Table 3: Summary of significant structure fires

City of Ballarat Municipal Emergency Management	Municipal Fire Management Plan Document. No.	Issue Date December 2011	Review Date September 2014	Version 1.5
---	--	-----------------------------	-------------------------------	----------------

3.8 Future Fire Management Implications

Future vulnerabilities will include the bushland and farming interface areas, given the expected growth corridors to the west, along with current and proposed sub divisions in the eastern bushland interface area of the municipality.

Ballarat west has been designated as the future growth area in Ballarat. This growth area will be supported by strategically located activity centres, with co-located schools and community facilities.

Ballarat West Growth Area

The Ballarat West Growth Area will cater for residential growth and provide services and infrastructure for new communities. The Growth Area comprises 1,675 hectares of Greenfield land located to the west of Alfredton, Delacombe and Sebastopol. The Growth Area will provide circa 18,000 new houses at full development to accommodate a population of over 40,000 people. Council is currently developing plans for four residential precincts (Bonshaw Creek, Greenhalghs Road and Carngham Road) which will comprise housing, town centres, community facilities, open space and transport networks. Plans have been approved for Alfredton West precinct now known as Lucas.

Ballarat West Employment Zone

The Ballarat West Employment Zone, a 600 hectare precinct to the west of Ring Road and Learmonth Road, has been earmarked as Ballarat's future industrial area. Uses could include industrial, manufacturing, freight and logistics, aviation and other business type activities. Situated in close proximity to the Western Hwy, the Ballarat Airport and to rail infrastructure, this large tract of flat, undeveloped land is an ideal site for large scale businesses.

Ballarat Western Link Road

The Western Link Road will provide a connection between existing transportation infrastructure of regional importance, the Employment Zone and residential development in Ballarat West. The improved linkage between the Western, Glenelg and Midland Highways will improve the efficiency of logistics, provide an alternative route to the Central Business District for the transportation of freight, and provide access to developable land particularly in the Ballarat West Growth Area and Employment Zone

This growth will necessitate future planning for fire management to consider future requirements for infrastructure and service delivery for fire response.

In a number of Ballarat fringe areas, individuals purchasing land and houses moving from the larger metropolitan areas, as well as investment purposes have resulted in an increased number of absentee and city centric land owners in the Municipality. These land owners traditionally have less understanding of fuel and fire management requirements, have little engagement with the community, and live externally to the municipality. This limits their capacity and ability to undertake regular fuel management works and participate in local community networks.

City of Ballarat Municipal Emergency Management	Municipal Fire Management Plan Document. No.	Issue Date December 2011	Review Date September 2014	Version 1.5
---	--	-----------------------------	-------------------------------	----------------

4 Municipal Fire Management Objectives

4.1 Objectives/Outcomes

The primary objectives of the City of Ballarat MFMP are to:

- Effectively manage and reduce the risk of fire, with a view to protecting life and property and with due regard to our natural environment; and
- Align and integrate existing fire management planning and practices across agencies and the community.

The City of Ballarat MFMP is a strategic and operational document that identifies communities and assets at risk through an Environmental Risk Scan incorporating Council's existing MFPP and MEMP, using the Victorian Fire Risk Register (VFRR) tool to identify assets at risk from bushfire and treatments currently applied to mitigate risk.

The City of Ballarat MFMP, as for each municipality throughout the state which is subject to the risk of fires, is required to prepare and submit a draft MFMP to the MEMPC for their endorsement prior to submission to Council for its endorsement.

The intention of this MFMP is to minimise the occurrence, and mitigate the impacts of bush, grass and structure fire and hazardous materials incidents in the community in accordance with the IFMP framework.

4.2 Strategic Directions

The plan addresses both public and private land across the PPRR continuum. The MFMP will be reviewed and updated annually to ensure it incorporates any new strategies, programs and tools developed to meet Council, agencies and community needs and expectations.

Adopting the principles of continuous improvement, the strategic direction of the MFMP aligns directly to the *State Fire Management Strategy (2009)* which articulates the vision of future fire management in Victoria as fire management that delivers:

- active participation of community, the industry and government, working together in fire management;
- fire management planning to reduce the destructive impact of fire on communities and the environment;
- communities that are resilient to the effects of fire; and
- greater understanding of the fire industry within the community, healthy natural, social, built and economic environments.

Also considered in the ongoing development of the fire management plan are the following broad strategy documents which can be accessed through the CFA, Department of Justice and Regulation and Emergency Management Commissioner's websites at www.cfa.vic.gov.au, www.justice.vic.gov.au, and www.emv.vic.gov.au

- "Living with fire" - Victoria's Bushfire Strategy provides Victoria with clear direction to meet future bushfire challenges.
- "Bushfire Safety Policy Framework" (Emergency Management Commissioner).
- "Making Victoria Fire ready" (Implementing Governments response to 2009 Victorian Bushfire Royal Commission (VBRC).

The primary aim of the MFMP is to create greater community awareness and communicate fire management information more effectively. Ultimately, the community will share responsibility for implementing the strategies contained within the plan and create a safer municipality through undertaking the following tasks:

- Ensure that plans and actions are in place (that responsible authorities are advised of actions which the Committee deem necessary) for minimising the risk of an outbreak of fire or for suppressing any fire that may occur within the area (Section 55 of the CFA Act)
- Develop programs that are relevant to the community
- Measure fire safety outputs to assess the reduction in community vulnerability to fire

Part Four: Municipal Fire Management Objectives

City of Ballarat Municipal Emergency Management	Municipal Fire Management Plan Document. No.	Issue Date December 2011	Review Date September 2014	Version 1.5
---	--	-----------------------------	-------------------------------	----------------

- Engage community groups and businesses in ongoing dialogue about fire mitigation solutions including fire prevention activities
- Liaise with other agencies and committees to ensure integration and consistency of purpose.

4.3 Links to other Business Planning and Programs

Important linkages are:

- The State Fire Management Strategy (2009)
- Grampians Regional Strategic Fire Management Plan V2 (2011)
- City of Ballarat Municipal Emergency Management Plan 2010-2013
- City of Ballarat Annual Municipal Fire Preparedness Plan
- City of Ballarat Municipal Neighbourhood Safer Place Plan
- DELWP Fire Operation Plan
- Powercor Bushfire Mitigation Strategy
- SP Ausnet Bushfire Mitigation Strategy
- Vic Roads – Roadside Fire Management
- CHW Fire Prevention Plan
- Plantation Fire Mitigation Plans
- Neighbouring Municipalities Municipal Fire Management Plans
- CFA Operational Plans and Brigade Pre Plans
- Other CFA Plans

Other linkages occur through alignment to organisational business planning cycles, agreed data sharing protocols and common risk assessment methodologies.

City of Ballarat Municipal Emergency Management	Municipal Fire Management Plan Document. No.	Issue Date December 2011	Review Date September 2014	Version 1.5
---	--	-----------------------------	-------------------------------	----------------

5 Fire Risk Management Strategies

5.1 Risk Assessment Methodologies

5.1.1 Analysis and Prioritisation of Municipal Bushfire Risk

To determine the bushfire risk within the City of Ballarat, assessment was undertaken using the environments contained within the Victorian Fire Risk Register (VFRR) process.

The VFRR application is a systematic process that identifies assets at risk from bushfire and assesses their level of risk on a consistent state wide basis using the ISO:31000-2009 Risk Management.

The VFRR data provided the starting point to assess the effectiveness of existing treatments and determine residual risk levels for the purpose of developing further mitigation treatments as required (refer to Appendix A.1).

The MFMP, as a sub plan of the City of Ballarat Municipal Emergency Management Plan, is risk based and has been developed using principles outlined in the Integrated Fire Management Planning (IFMP) Framework and Guide and the Guidelines for Municipal Fire Management Planning Part 6A: Emergency Management Manual.

IFMP Alignment with AS/NZS ISO 31000:2009	
Stage of the IFMP Planning Cycle	Relevant aspect of the AS/NZS ISO 31000:2009. Risk Management –Principles and Guidelines
Engagement Plan	Communicate and consult
Environmental Scan	Establish the context
Risk Assessment – Analyse	Identify the risk – Analyse the risk – Evaluate the risk
Decide – Publish	Determine and document treatment options
Deliver	Treat the risk
Monitor and Improve	Monitor and review

Table 4: IFMP alignment with AS/NZS 31000:2009

5.1.2 Alignment to Regional Bushfire Risk Objectives

The plan also references treatments for the six priority risks in relation to bushfire as determined by the Grampians RSFMP using the VFRR risk assessment process. The table below identifies the priority risks as articulated in the Grampians Regional Strategic Fire Management Plan (RSFMP) (aligned to the asset classes and subclasses contained within the VFRR tool).



Figure 3: DELWP Fuel Reduction Burn

City of Ballarat Municipal Emergency Management	Municipal Fire Management Plan Document. No.	Issue Date December 2011	Review Date September 2014	Version 1.5
---	--	-----------------------------	-------------------------------	----------------

Bushfire

Grampians RSF MPC Priority	VFRR Asset Class	VFRR Asset Sub Class/es
1. Urban Interface	Human Settlement	<ul style="list-style-type: none"> ▪ Residential ▪ Other ▪ Special Fire Protection
2. Power Supply 3. Communications 4. Water Supplies and Catchments 5. Transport	Economic	<ul style="list-style-type: none"> ▪ Agriculture ▪ Commercial ▪ Infrastructure ▪ Tourist and recreational ▪ Mines ▪ Commercial forests ▪ Water catchments
6. Natural Environment	Environmental	<ul style="list-style-type: none"> ▪ Locally Important ▪ Endangered ▪ Vulnerable
	Cultural Heritage	<ul style="list-style-type: none"> ▪ Aboriginal Significance ▪ Non Indigenous ▪ Other

Table 5: Bushfire Priority with VFRR Asset Classes and Sub Classes

5.1.3 Treatment of Municipal Bushfire Risk

In developing this plan the MF MPC has considered the state priorities as the municipal fire management priorities. They are:

- Protection and preservation of life, including community warnings
- Educated and informed communities
- Protection of critical infrastructure and community assets that support community resilience
- Protection of residential property as a place of primary residence
- Protection of assets supporting individual livelihoods and economic production that supports individual and community financial sustainability
- Protection of environmental and conservation values that consider the cultural, biodiversity, and social values of the environment.

Following the state priorities, the municipal fire management plan aims to reduce the number and the severity of fires within the municipality with the intent of creating a more fire resilient community.

The state priorities are underpinned by the primacy of life, the protection of property, the economy and the environment. These priorities inform and are integrated into the primary fire risk management strategies used in this plan, which are:

- community education and engagement;
- hazard reduction;
- preparedness; and
- regulatory controls.

There are a number of state wide and municipal treatments that have been identified for each fire risk management strategy, which can be used by agencies to reduce the risk and effect of fire on the community. The generic state wide and municipal wide treatments include:

- Community education programs

Part Five: Risk Management Strategies

City of Ballarat Municipal Emergency Management	Municipal Fire Management Plan Document. No.	Issue Date December 2011	Review Date September 2014	Version 1.5
---	--	-----------------------------	-------------------------------	----------------

- Community education and engagement activities
- Public awareness – multimedia communications
- Powerline hazard tree identification, management and reporting
- Fire hazard inspection program and issue of notice
- Compliance and enforcement of legislation
- Wildfire management overlays
- Building code of Australia
- Permits to Burn
- Local laws.

To effectively reduce community vulnerability to fire requires more than inter-agency effort alone. It requires the facilitation of a more self-reliant and self-aware community who have the knowledge, motivation and capacity to manage the risks to reduce the threat of fire in their own communities as an active partner with fire management agencies.

The key objectives and outcomes sought through the implementation of the primary fire risk management strategies for bushfire are outlined below:

Community Education and Engagement				
Objectives	Timeframe	Agency Treatments	Community / Individual Treatments	Outcome
1. To build capacity and knowledge, resilience and understanding of the dangers of bushfire. 2. To provide the tools and education opportunities for community and individuals to better prepare and understand the risks of bushfire. 3. To build awareness and understanding of the role of fire in the environment.	For the Plan duration – October 2015 to October 2017	<ul style="list-style-type: none"> ▪ Community education programs ▪ Agency Integrated Community engagement activities ▪ Bushfire awareness training ▪ Multi media communications ▪ Victoria Bushfire Information Line ▪ Tourism fire safety campaigns ▪ Increase legislative and regulatory awareness ▪ Planning controls awareness of ▪ Targeted education campaign regarding the use and role of fire in the environment 	<ul style="list-style-type: none"> ▪ To be proactive and seek information ▪ To be involved in community education and engagement programs 	<ul style="list-style-type: none"> ▪ All agencies will review and evaluate programs and participation of community as part of the review process of the MFMP.

Table 6: Bushfire - Community Education and Engagement Fire Risk Management Strategy

Hazard Reduction				
Objectives	Timeframe	Agency Treatments	Community / Individual Treatments	Outcome
1. To strategically reduce fuel to minimise impact, intensity and spread of bushfire. 2. To pre plan and establish strategic points to affectively combat and manage structure fire activity.	For the Plan duration – October 2015 to October 2017	<ul style="list-style-type: none"> ▪ Slashing program ▪ Burn program ▪ Spraying program ▪ Pruning program ▪ Use appropriate incident modelling tools to identify potential impacts to communities, such as the phoenix modelling tool 	<ul style="list-style-type: none"> ▪ Private property hazard reduction: <ul style="list-style-type: none"> - Cleaning gutters - Slashing - Mowing - Ploughing - Grazing - Fuel reduction burns 	<ul style="list-style-type: none"> ▪ Shared responsibility between agencies and individuals to minimise fire hazards.

City of Ballarat Municipal Emergency Management	Municipal Fire Management Plan Document. No.	Issue Date December 2011	Review Date September 2014	Version 1.5
---	--	-----------------------------	-------------------------------	----------------

Table 7: Bushfire - Hazard Reduction Fire Risk Management Strategy

Preparedness				
Objectives	Timeframe	Agency Treatments	Community / Individual Treatments	Outcome
<p>1. To understand appropriate actions to reduce risk and impact of bushfire, initiatives include:</p> <ul style="list-style-type: none"> - Ignition prevention - Risk identification and treatment - Resource preparation - Response planning - Operational restrictions - System testing - Security of water supply 	For the Plan duration – October 2015 to October 2017	<ul style="list-style-type: none"> ▪ VFRR process ▪ Establishment of Incident Control Centres ▪ Code red days ▪ Powerline inspections ▪ Community Information Guide ▪ Neighbourhood Safer Places – Places of Last Resort ▪ Fire breaks ▪ Emergency Management Plan ▪ Evacuation Plans ▪ Brigade Pre Plans 	<ul style="list-style-type: none"> ▪ Personal bushfire preparedness plans ▪ Daily readiness ▪ Practice/ rehearse plans 	<ul style="list-style-type: none"> ▪ All agencies regularly evaluate preparation and readiness to respond to fire. ▪ Strengthened capacity for agencies to provide an integrated response. ▪ Measurable reduction of the impact of bushfire.

Table 8: Bushfire - Preparedness Fire Risk Management Strategy

Regulatory Controls				
Objectives	Timeframe	Agency Treatments	Community / Individual Treatments	Outcome
<p>1. To implement regulation aimed to reducing risk and impact of bushfire.</p> <p>2. To create and maintain affective linkages between planning functions to better inform proposed residential developments.</p>	For the Plan duration – October 2015 to October 2017	<ul style="list-style-type: none"> ▪ Fire hazard inspections ▪ Total fire bans ▪ Planning schemes ▪ Fire danger period ▪ Building codes ▪ Enforcement of fire hazard notices ▪ Response to planning applications 	<ul style="list-style-type: none"> ▪ Comply with regulations 	<ul style="list-style-type: none"> ▪ Compliance with regulatory controls. ▪ Appropriate residential development.

Table 9: Bushfire - Regulatory Controls Fire Risk Management Strategy

In addition, there are a range of site-specific plans to reduce specific risks within the municipality that are required by other legislation.

Details of specific strategy treatments and activities to treat assets identified at risk from bushfire and broader fire risk in the City of Ballarat are listed in Appendices A and B respectively.

City of Ballarat Municipal Emergency Management	Municipal Fire Management Plan Document. No.	Issue Date December 2011	Review Date September 2014	Version 1.5
---	--	-----------------------------	-------------------------------	----------------

5.1.4 Analysis and Prioritisation of Municipal Structure Fire Risk

The MFMPC undertook analysis of assets at risk from structure fire using categories closely aligned to the asset classes contained within the VFRR process and risk assessment methodologies. ISO: 31000 2009 was also applied to produce a municipal risk profile to determine the risk level for the municipal footprint.

Structure Fire: Is defined as any uncontrolled fire inside, on, under or touching a building or structure that needs to be extinguished

The risk analysis process was conducted on asset sub class categories rather than individual assets, due to the generic nature of their classification and treatments. Further risk analysis was undertaken where an individual asset within any of the sub classes was identified as a significantly different or higher risk within that category,

Current treatments for these risks were then identified and analysed to determine their relevance and effectiveness.

Identified treatment gaps or issues requiring further information and research, form the basis for further fire management planning activities that the MFMPC will need to undertake and include in their MFMP work plan in the future.

It should also be recognised that a range of strategies and treatments exist which are applied consistently state wide and throughout municipalities to reduce the occurrence and impact of structure fires. These include:

- Provisions in the Victorian Building Act
- Provisions in the Victorian Planning Scheme
- Provisions in the Building Code of Australia (BCA)
- Compliance and enforcement of legislation
- Council Essential Safety Measures (ESM) Procedures and audit inspections
- Industry guidelines
- Standards (i.e. electrical safety)
- Engineered controls (i.e. sprinkler systems, monitored fire alarms etc.)
- Fire service response, planning and training
- Staff training
- Event permits and event management plans
- Targeted education programs
- Public awareness programs – multimedia communications

City of Ballarat Municipal Emergency Management	Municipal Fire Management Plan Document. No.	Issue Date December 2011	Review Date September 2014	Version 1.5
---	--	-----------------------------	-------------------------------	----------------

5.1.5 Structure Fire Risk Management Objectives

Priority risks for structure fire incidents within the City of Ballarat have been defined by the City of Ballarat MFMPC and are set out in the tables below. The tables identify Asset Sub Classes using categories closely aligned to the asset classes contained within the VFRR process and risk assessment methodologies. These methodologies were applied to produce a risk profile to determine the risk level as well as current treatments for the municipality.

Structure Fire		
Grampians RSMPC Priority	VFRR Asset Class	Proposed VFRR Asset Sub Class/es
1. Houses Accommodation Places of public gathering Infirm, assisted living	Human Settlement	<ul style="list-style-type: none"> ▪ Residential <ul style="list-style-type: none"> - High Density - Urban - Interface Living - Rural - Motels & Other Accommodation ▪ Public Assembly <ul style="list-style-type: none"> - Entertainment & Leisure & Conference Venues - Institutions - Hotels/Nightclubs ▪ Healthcare <ul style="list-style-type: none"> - Hospitals & Medical Centres - Special Care Facilities
2. Retail Commercial Businesses Industrial Infrastructure	Economic	<ul style="list-style-type: none"> ▪ Commercial & Industrial <ul style="list-style-type: none"> - Retail/Business – Joined or Contiguous - Retail/Business – Separate Structures - Industrial - Infrastructure
3. Buildings of significant Heritage or cultural value	Cultural Heritage	<ul style="list-style-type: none"> ▪ Heritage Listed and Locally Significant Structures

Table 10: Structure Fire Priority with Asset Classes and proposed Sub Classes

City of Ballarat Municipal Emergency Management	Municipal Fire Management Plan Document. No.	Issue Date December 2011	Review Date September 2014	Version 1.5
---	--	-----------------------------	-------------------------------	----------------

5.1.6 Treatment of Municipal Structure Fire Risk

The key objectives and outcomes sought through the implementation of the primary fire risk management strategies for structure fires are outlined in the tables below:

Community Education and Engagement				
Objectives	Timeframe	Agency Treatments	Community / Individual Treatments	Outcome
<ol style="list-style-type: none"> To build capacity and knowledge, resilience and understanding of the dangers of structure fire. To provide the tools and education opportunities for community and individuals to better prepare for and understand the risks of structure fire. 	For the Plan duration – October 2015 to October 2017	<ul style="list-style-type: none"> Community education programs Community engagement activities Multimedia communications Increase legislative and regulatory awareness Increased awareness of planning controls 	<ul style="list-style-type: none"> To be proactive and seek information To be involved in community education and engagement programs 	<ul style="list-style-type: none"> All agencies will review and evaluate programs and participation of community as part of the review process of the MFMP.

Table 11: Structure Fire - Community Education and Engagement Fire Risk Management Strategy

Hazard Reduction				
Objectives	Timeframe	Agency Treatments	Community / Individual Treatments	Outcome
<ol style="list-style-type: none"> To strategically reduce impact and intensity of structure fire. To pre plan and establish strategic points to effectively combat and manage structure fire activity. 	For the Plan duration – October 2015 to October 2017	<ul style="list-style-type: none"> Conduct fire safety inspections Buildings constructed according to the Building Code of Australia Use appropriate incident modelling tools to identify potential impacts to communities, such as the plume modelling tool 	<ul style="list-style-type: none"> Installation of sprinklers, smoke detectors, fire blankets and fire extinguishers Comply with regulations 	<ul style="list-style-type: none"> Agencies and individuals working towards minimising the loss and damage caused by structural fires in the community.

Table 12: Structure Fire - Hazard Reduction Fire Risk Management Strategy

City of Ballarat Municipal Emergency Management	Municipal Fire Management Plan Document. No.	Issue Date December 2011	Review Date September 2014	Version 1.5
---	--	-----------------------------	-------------------------------	----------------

Preparedness

Objectives	Timeframe	Agency Treatments	Community / Individual Treatments	Outcome
<p>1. To understand appropriate actions to reduce risk and impact of structure fire, initiatives include:</p> <ul style="list-style-type: none"> - Ignition prevention - Risk identification and treatment - Resource preparation - Response planning - System testing - Security of water supply 	For the Plan duration – October 2015 to October 2017	<ul style="list-style-type: none"> ▪ Emergency Management Plan ▪ Brigade Pre Plans ▪ Fire Sprinkler/ Extinguisher Installation & Maintenance 	<ul style="list-style-type: none"> ▪ Maintenance of sprinklers, smoke detectors and fire extinguishers ▪ Building/staff fire drills 	<ul style="list-style-type: none"> ▪ All agencies and individuals to regularly evaluate preparation and readiness to respond to fire. ▪ Measurable reduction of impact on structure fire.

Table 13: Structure Fire - Preparedness Fire Risk Management Strategy



Figure 4: Installation of Fire Extinguisher and Fire Blanket in Kitchen

Regulatory Controls

Objectives	Timeframe	Agency Treatments	Community / Individual Treatments	Outcome
<p>1. To implement regulation aimed to reduce risk and impact of structure fire.</p> <p>2. To create and maintain effective linkages between planning functions to better inform proposed residential developments.</p>	For the Plan duration – October 2015 to October 2017	<ul style="list-style-type: none"> ▪ Conduct fire safety inspections ▪ Planning schemes ▪ Building codes ▪ Response to planning applications 	<ul style="list-style-type: none"> ▪ Comply with regulations 	<ul style="list-style-type: none"> ▪ Compliance with regulatory controls. ▪ Appropriate residential development.

City of Ballarat Municipal Emergency Management	Municipal Fire Management Plan Document. No.	Issue Date December 2011	Review Date September 2014	Version 1.5
---	--	-----------------------------	-------------------------------	----------------

5.1.7 Analysis and Prioritisation of Municipal Hazardous Materials Incident Risk

The MFMP undertook analysis of assets at risk from hazardous materials Incidents using categories closely aligned to the asset classes contained within the VFRR process and risk assessment methodologies. ISO: 31000 2009 was also applied to produce a municipal risk profile to determine the risk level for the municipal footprint.

HAZMAT (Hazardous Materials): is defined as any event involving an uncontrolled or unwanted release of hazardous substances that may threaten life or property. HAZMAT incidents include substances that may be flammable, combustible, corrosive, poisonous, oxidising, radioactive, explosive or otherwise harmful chemicals or materials

The risk analysis process was conducted on asset sub class categories rather than individual assets, due to the generic nature of their classification and treatments. Further risk analysis was undertaken where an individual asset within any of the sub classes was identified as a significantly different or higher risk within that category,

Current treatments for these risks were then identified and analysed to determine their relevance and effectiveness.

Identified treatment gaps or issues requiring further information and research, form the basis for further fire management planning activities that the MFMP will need to undertake and include in their MFMP work plan in the future.

It should also be recognised that a range of strategies and treatments exist which are applied consistently state wide and throughout municipalities to reduce the occurrence and impact of hazardous materials incidents. These include:

- Compliance and enforcement of legislation
- Council Essential Safety Measures (ESM) Procedures and audit inspections
- Industry guidelines
- Fire service response, planning and training
- Staff training
- Event permits and event management plans
- Targeted education programs
- Public awareness programs – multimedia communications

City of Ballarat Municipal Emergency Management	Municipal Fire Management Plan Document. No.	Issue Date December 2011	Review Date September 2014	Version 1.5
---	--	-----------------------------	-------------------------------	----------------

5.1.8 Hazardous Materials Incident Risk Management Objectives

Priority risks for Hazardous Material Incidents within the City of Ballarat have been defined by the City of Ballarat MFMP and are set out in the tables below. The tables identify Asset Sub Classes using categories closely aligned to the asset classes contained within the VFRR process and risk assessment methodologies. These methodologies were applied to produce a risk profile to determine the risk level as well as current treatments for the municipality.

Hazardous Materials Incident		
Grampians RSFMP Priority	VFRR Asset Class	Proposed Asset Sub Class/es
1. Housing Accommodation Places of public gathering Infirm, assisted living	Human Settlement	<ul style="list-style-type: none"> ▪ Residential <ul style="list-style-type: none"> - High Density - Urban - Interface Living - Rural - Motels & Other Accommodation ▪ Public Assembly <ul style="list-style-type: none"> - Entertainment & Leisure & Conference Venues - Institutions - Hotels/Nightclubs ▪ Healthcare <ul style="list-style-type: none"> - Hospitals & Medical Centres - Special Care Facilities
2. Retail Commercial Businesses Industrial Infrastructure	Economic	<ul style="list-style-type: none"> ▪ Commercial & Industrial <ul style="list-style-type: none"> - Retail/Business – Joined or contiguous - Retail/Business – separate structures - Industrial - Transport
3. Chemical incident affecting the environment	Environmental	<ul style="list-style-type: none"> ▪ Flora & Fauna, Land, Water & Air Quality
4. Buildings of significant Heritage or cultural value	Cultural Heritage	<ul style="list-style-type: none"> ▪ Heritage Listed and Locally Significant Structures

Table 15: Hazardous Materials Incident Priority with Asset Classes and proposed Sub Classes

City of Ballarat Municipal Emergency Management	Municipal Fire Management Plan Document. No.	Issue Date December 2011	Review Date September 2014	Version 1.5
---	--	-----------------------------	-------------------------------	----------------

5.1.9 Treatments of Municipal Hazardous Materials Incident Risk

The key objectives and outcomes sought through the implementation of the primary risk management strategies for hazardous materials incidents are outlined in the tables below:

Community Education and Engagement				
Objectives	Timeframe	Agency Treatments	Community / Individual Treatments	Outcome
<ol style="list-style-type: none"> To build capacity and knowledge, resilience and understanding of the dangers of hazardous materials incidents. To provide the tools and education opportunities for industry and individuals to better prepare and understand the risks of hazardous materials incidents. 	For the Plan duration – October 2015 to October 2017	<ul style="list-style-type: none"> Community information in response to incidents Increase legislative and regulatory awareness Increased awareness of planning controls Shelter in place program 	<ul style="list-style-type: none"> To be proactive and seek information Follow shelter in place instructions when/if required 	<ul style="list-style-type: none"> All agencies will review and evaluate programs and information dissemination as part of the review process of the MFMP.

Table 16: Hazardous Materials Incident – Community Education and Engagement Fire Risk Management Strategy

Hazard Reduction				
Objectives	Timeframe	Agency Treatments	Community / Individual Treatments	Outcome
<ol style="list-style-type: none"> To strategically reduce impact of hazardous materials incidents. To pre plan and establish strategic points to effectively combat and manage hazardous materials incidents activity. 	For the Plan duration – October 2015 to October 2017	<ul style="list-style-type: none"> To provide advice to industry and community in relation to appropriate compliance with the Acts, Regulations, and Code of Practice for the Storage and Handling of Dangerous Goods Use appropriate incident modelling tools to identify potential impacts to communities, such as the plume modelling tool Brigade Pre Plans Pre Incident Response Plans Traffic route restrictions for hazardous materials loads 	<ul style="list-style-type: none"> Appropriate storage and handling of chemicals Follow Chemical Material Safety Data Sheets Comply with regulations and standards 	<ul style="list-style-type: none"> Agencies and individuals working towards minimising the loss and damage caused by mishandling or spillage of chemicals.

Table 17: Hazardous Materials Incident - Hazard Reduction Fire Risk Management Strategy

City of Ballarat Municipal Emergency Management	Municipal Fire Management Plan Document. No.	Issue Date December 2011	Review Date September 2014	Version 1.5
---	--	-----------------------------	-------------------------------	----------------

Preparedness

Objectives	Timeframe	Agency Treatments	Community / Individual Treatments	Outcome
<p>1. To understand appropriate actions to reduce risk and impact of hazardous materials incidents, initiatives include:</p> <ul style="list-style-type: none"> - Ignition prevention - Risk identification and treatment - Response planning - System testing 	For the Plan duration – October 2015 to October 2017	<ul style="list-style-type: none"> ▪ Emergency Management Plans ▪ Evacuation Plans ▪ Pre Incident Response Plans ▪ CFA and Worksafe inspections ▪ Written advice 	<ul style="list-style-type: none"> ▪ Maintenance and testing of fire safety equipment ▪ Emergency procedures for dangerous goods fire, spills and leaks ▪ Correct signage and labelling of chemicals ▪ Testing and exercising of Emergency Management Plans 	<ul style="list-style-type: none"> ▪ All agencies and individuals to regularly evaluate preparation and readiness to respond to fire. ▪ Measurable reduction of impact on hazardous materials incidents.

Table 18: Hazardous Materials Incident - Preparedness Fire Risk Management Strategy

Regulatory Controls

Objectives	Timeframe	Agency Treatments	Community / Individual Treatments	Outcome
<p>1. To implement regulation aimed to reducing risk and impact of hazardous materials incidents.</p>	For the Plan duration – October 2015 to October 2017	<ul style="list-style-type: none"> ▪ Planning schemes ▪ Building codes ▪ Comply with legislation ▪ Appropriate training for chemical use and handling ▪ Environmental Protection Authority referrals to CFA 	<ul style="list-style-type: none"> ▪ Comply with legislation and regulations ▪ Seek written advice where appropriate 	<ul style="list-style-type: none"> ▪ Compliance with regulatory controls. ▪ Appropriate industrial development.

Table 19: Hazardous Materials Incident - Regulatory Controls Fire Risk Management Strategy

City of Ballarat Municipal Emergency Management	Municipal Fire Management Plan Document. No.	Issue Date December 2011	Review Date September 2014	Version 1.5
---	--	-----------------------------	-------------------------------	----------------

5.2 Community Information Guide

A key recommendation from the Interim Report from the 2009 VBRC was the development of Community Information Guide (CIG's) for high risk communities across Victoria. The priority given for these plans is the protection of life.

The VFRR risk assessment process was also used to inform decisions relating to identified high risk towns and Community Information Guide, including identification of designated Neighbourhood Safer Places – Places of Last Resort

CIG's are established for high risk communities and are regularly reviewed. Should the risk in a particular area be modified by land clearing or development, CIG's may be updated, the area covered changed or the CIG withdrawn.

CIG's for specific locations in the City of Ballarat can be found in Appendix C.2 – Community Information Guide.

5.3 Neighbourhood Safer Places – Places of Last Resort

Neighbourhood Safer Places – Places of Last Resort (NSP's – PLR) are an area or premise that may, as a last resort, provide some sanctuary from the life threatening effects of a bushfire (for example direct flame contact or radiant heat).

Details of the specific locations of NSP's – PLR within the City of Ballarat can be found in Appendix C.3 – NSP's – PLR.

5.4 Strategic Fire Break Definitions

Strategic Fire Suppression Lines - will have the vegetation managed from fence line to fence line where practicable. Grass will be slashed to a height of 100mm or less and elevated fine fuels will not surpass a 'high' fuel hazard rating as assessed in the Overall Fuel Hazard Assessment Guide – DEPI.

Fire Control Lines - will have the vegetation managed three metres behind the guideposts where practicable. Vegetation will be slashed to a height of 100mm or less

Priority Egress/Access Roads (PEAR) - The primary function of PEAR will be to determine what treatments are required along the nominated road to maintain access and egress to an isolated community prior to or after a bushfire event

All priority roads in the municipality will be assessed and treated in accordance with the VicRoads Bushfire Risk Assessment Guideline August 2011.

CFA Brigade Fire Prevention Works - Brigade works may enhance Strategic Fire Suppression Lines and Fire Control Lines; however the implementation is not compulsory and will be subject to seasonal conditions and Brigade resource availability

Refer to appendix E.2 for further details.

5.5 Community Fire Refuges

The City of Ballarat does not have any designated Community Fire Refuges.

5.6 Individual Bushfire Risk Treatments

Following amendments made to the Victorian Planning Provisions in November 2011, guidelines have been produced that allow property owners to clear vegetation on their properties to reduce the threat of bushfire to their homes.

The 10/30 and 10/50 rules enable clearing around existing buildings used for accommodation (legally erected before 18 November 2011).

For new buildings, clearing for bushfire protection will be considered through the planning permit process.

City of Ballarat Municipal Emergency Management	Municipal Fire Management Plan Document. No.	Issue Date December 2011	Review Date September 2014	Version 1.5
---	--	-----------------------------	-------------------------------	----------------

5.6.1 Vegetation Management Rights

Native vegetation is important to many Victorians and its removal is carefully regulated by the planning system. A vegetation management right called the '10/30 rule right' is part of a suite of measures to help Victorians in areas at risk from bushfire prepare their properties.

The 10/30 rule right simplifies the right to clear native vegetation around a home for bushfire protection without obtaining a planning permit.

The right allows landowners to clear without a planning permit:

- Any vegetation, including trees, within 10 metres of their home on their property;
- Any vegetation (except for trees) within 30 metres of their house on their property; and
- Any vegetation either side of their property boundary fence to a combined maximum width of 4 metres (with consent from the neighbouring landowner).

The '10/50 rule' enables all landowners in areas within the Bushfire Management Overlay to undertake the following measures for bushfire protection on their property:

- Any removal, destruction or lopping of any vegetation within 10 metres, of an existing building used for accommodation; and
- The removal, destruction or lopping of any vegetation, except trees, within 50 metres of an existing building used for accommodation

5.6.2 Permit to Burn

Under the City of Ballarat's Local Law No 15 clause 3.8.1, a fire may not be lit or remain alight in the open air without a permit, and the requirements of the Fire Danger Period and Total Fire Bans must be complied with. Council will issue a Local Laws Permit with conditions for safe removal of fuel loads.

During the declared Fire Danger Period, limited permits may be obtained by individuals to conduct a fuel reduction or stubble burn within the municipality. These permits are issued by Council's Municipal Fire Prevention Officer under authority of the CFA Act. These permits contain stringent conditions that must be complied with.

Further information may be obtained from City of Ballarat's website www.ballarat.vic.gov.au.

5.6.3 Private Property Inspections and Fire Prevention Notices

The City of Ballarat will conduct annual fire hazard inspections across the municipality, to identify potential and actual fire hazards on private land and direct the removal of the hazard through service of a Fire Prevention Notice. Council will conduct random inspections for overgrown properties or inspect complaints with the view to removing fire hazards outside the Fire Danger Period.

5.6.4 Planning Permits

When applications are lodged with the City of Ballarat for permits under the Planning and Environment Act for the subdivision of land or the construction of buildings in areas of high fire risk, The City of Ballarat may give consideration to the following documents in determining any such application, and also refer the application to the relevant fire agencies for comment.

- Planning Guidelines for Subdivisions in bushfire-prone areas
- Building in a Bushfire Management Overlay – Guidance notes – CFA & Department of Transport, Planning and Local Infrastructure
- Australian Standard 3959, 2009 - Construction of Buildings in Bushfire Prone Areas
- Wildfire Management Overlay – City of Ballarat Planning Scheme
- Other relevant documentation

City of Ballarat Municipal Emergency Management	Municipal Fire Management Plan Document. No.	Issue Date December 2011	Review Date September 2014	Version 1.5
---	--	-----------------------------	-------------------------------	----------------

5.7 Cross Boundary Arrangements

The City of Ballarat MFMP seeks to ensure risk environments that cross municipal and regional boundaries are treated in a seamless manner with regard to risk assessment and treatments. In part, this is achieved through a collaborative approach and the use of consistent processes and tools.

The City of Ballarat municipal area shares borders with Pyrenees, Hepburn, Moorabool and Golden Plains Shires. It is the shared responsibility of these MFMP's to ensure that risks contiguous across these borders are planned for in a consistent and seamless manner.

Clear linkages to existing organisational cross boundary agreements and Memorandums of Understanding between agencies dealing with Preparedness. Preparation, response and recovery activities and resource allocation arrangements are also vital.

To ensure that shared risk is appropriately addressed, MFMPs will be considered by the RSFMP to make certain that they address risks shared across municipal and agency boundaries in a consistent and seamless manner.

Current identified cross boundary and contiguous risk from bushfire for the City of Ballarat municipal area includes:

Risk	Adjacent Municipality	Strategy
Creswick State Forest	Hepburn Shire	Ensure alignment of planning and prevention activities in relation to these risks are discussed and coordinated with relevant municipalities. Ensure that these arrangements and plans are included in relevant MFMP's.
Private Plantations	Pyrenees Shire	
Sheppard's Flat	Golden Plains	
Smythes Creek Haddon Common		

Table 20: City of Ballarat Cross Boundary Risks

It is also recognised that agencies and municipalities have existing planning relationships across multiple boundaries and that these planning arrangements need to be considered when developing future plans.

A map identifying the City of Ballarat is provided at Appendix E – Maps.

City of Ballarat Municipal Emergency Management	Municipal Fire Management Plan Document. No.	Issue Date December 2011	Review Date September 2014	Version 1.5
---	--	-----------------------------	-------------------------------	----------------

6 Plan reporting, review and improvement

6.1 Legislative responsibilities

The City of Ballarat has a legislative responsibility under the Emergency Management Act to develop a MEMP, and under the CFA Act, to develop and implement a MFPP. The MFMP is a sub plan of the MEMP and is prepared by the MFMPC. It is also required to meet the same legislative requirements as the MFPP, when endorsed and adopted the MFMP will replace the MFPP.

6.2 Plan endorsement and adoption

The City of Ballarat is the custodian of the MFMP pursuant to current legislative arrangements.

The MFMPC shall draft a MFMP and seek endorsement, of the draft plan from the committee and, where appropriate, non-committee members with responsibilities and accountabilities under the plan. After appropriate stakeholder and community consultation and engagement, including perusal by the Grampians RSFMP, the Plan will then be endorsed through a formal motion by the City of Ballarat MFMPC at a meeting, at which the Chair of the committee will sign on behalf of all members of the City of Ballarat MFMPC.

Following this process, the MFMPC will recommend the MFMP to the MEMPC for endorsement. Once endorsed by the MEMPC, the plan will be sent to the Grampians RSFMP for comment, prior to recommendation to council for consideration and adoption.

The MFMP has a three year planning cycle, commencing from the date of Council adoption and endorsement.

6.3 Plan Reporting

Each MFMPC reports to their respective MEMPC on a regular basis determined through their meeting cycles on the progress of the committee and associated works.

Any issues requiring advocacy or elevation to regional or State level are reported through to the Grampians RSFMP for further action.

A process and supporting tool for agencies to report back into their respective MFMPC against the actions contained within each MFMP's Appendix B1 (Multi Agency Bushfire Work Plan) has been developed.

This initiative is currently being trialed by MFMPC's in Grampians region to determine suitability and relevance.

Guidelines for monitoring, reporting and reviewing of plans are currently being developed at the State level.

6.4 Plan audit

The current audit provisions contained under section 21A of the Emergency Management Act 1986, and for councils within the country area of Victoria, section 55 of the CFA will continue to apply.

For councils wholly or partly within the Country Area of Victoria, the MFMP will also be audited under Section 55B of the CFA Act.

In the country area of Victoria, the MFMP must incorporate the provisions of Section 55A (2) of the CFA Act relating to fire risks and their treatment and will be deemed to meet the requirement for a MFPP under Section 55A (1) of the CFA Act.

6.5 Plan amendment and review

It is essential to ensure that the MFMP remains relevant and contains up to date information. This plan will be reviewed and updated annually by the Municipal Fire Management Planning Committee to ensure that it meets community needs and expectations. This review takes into account works completed, environmental changes and any additional risks. Significant changes, including planning mitigation works must be approved by the MFMPC members and articulated throughout the MEMPC to Council for endorsement and adoption.

This Plan expires in October 2017 and has a three year lifespan based around current audit requirements contained within Section 55B of the CFA Act. It is acknowledged that audit process and planning cycles may change as planning processes evolve into the future.

Structure Fire Risk and Hazardous Materials Incident risk elements have been addressed in this update of the plan. Other elements requiring annual update include the provision of Neighbourhood Safer Places – Places of Last Resort as they are established and Community Information Guides as they are developed.

The City of Ballarat MFMP will be reviewed and amended:

- 1 Annually in association with the MEMP
 - i. Changes to community demographics and level of risk

Part Six: Plan reporting, review and improvements

City of Ballarat Municipal Emergency Management	Municipal Fire Management Plan Document. No.	Issue Date December 2011	Review Date September 2014	Version 1.5
---	--	-----------------------------	-------------------------------	----------------

ii. Alterations to the Emergency Management Manual Victoria

- 2 Victorian Fire Risk Register outcomes
- 3 Following significant incidents if required
- 4 As directed by the Emergency Management Commissioner, State or Regional Fire Management Planning Committees
- 5 Changes to organisational responsibilities or as required by legislation
- 6 As further works are completed by the MFMPC

The MFMPC will review this plan as necessary to account for any changes in content or risk. The MFMPC will report quarterly to the Municipal Emergency Management Planning Committee and the Regional Strategic Fire Management Planning Committee, providing a status reported on fire management across the PPRR continuum.

City of Ballarat Municipal Emergency Management	Municipal Fire Management Plan Document. No.	Issue Date December 2011	Review Date September 2014	Version 1.5
---	--	-----------------------------	-------------------------------	----------------



Appendices

Appendix A - Asset Risk Management Register

Refer to individual appendix A documents as listed below:

Appendix A.1 Multi Agency Bushfire Asset Risk Management Register

Appendix A.2 Structure Fire Risk Management Register

Appendix A.3 Hazardous Materials Incident Risk Management Register

BUSHFIRE RISK MANAGEMENT REGISTER - DRAFT

CITY OF BALLARAT

DESCRIPTION	EXISTING TREATMENTS
	Generic Treatments for all Human Settlement
	(101) Community Education Programmes
	(102) Community Education & Engagement Activities
	(104) Public Awareness - Multi Media Communications
	(308) Powerline Hazard Tree Identification, Management & Reporting
	(401) Fire Hazard Inspection Program & Issue of Notices
	(402) Compliance Enforcement of Legislation
	(404) Building Code of Australia
Buninyong and Mt Helen	
	(201) Burn Programme
	(102) Community Education & Engagement Activities
	(305) Daily Readiness
	(310) Static Water Supply
	(202) Slashing Programme
	(203) Spraying Programme
	(309) Fire Plug Installation & Maintenance
	(311) Township Protection Plans
Canadian	
	(303) Bushfire Preparedness Plan
	(201) Burn Programme
	(309) Fire Plug Installation & Maintenance
	(313) Critical Egress Roads
	(305) Daily Readiness
	(102) Community Education & Engagement Activities
	(307) Strategic Breaks
	(312) Neighbourhood Safer Places - Places of Last Resort
	(310) Static Water Supply
	(202) Slashing Programme
Magpie	
	(202) Slashing Programme
	(201) Burn Programme
	(310) Static Water Supply
	(307) Strategic Breaks
	(309) Fire Plug Installation & Maintenance
	(306) Fire Access Tracks & Roads
	(403) Wild Fire Management Overlay
	(206) Multiple Fuel Management Regime
	(303) Bushfire Preparedness Plan
	(301) Operations Restrictions
Invermay	
	(202) Slashing Programme
	(201) Burn Programme
	(310) Static Water Supply
	(307) Strategic Breaks
	(309) Fire Plug Installation & Maintenance
	(306) Fire Access Tracks & Roads
	(312) Neighbourhood Safer Places - Places of Last Resort
	(206) Multiple Fuel Management Regime
	(303) Bushfire Preparedness Plan
	(301) Operations Restrictions
	(311) Township Protection Plans
	(403) Wildfire Management Overlay
Durham Lead	
	(202) Slashing Programme
	(310) Static Water Supply
	(307) Strategic Breaks
	(306) Fire Access Tracks & Roads
	(303) Bushfire Preparedness Plan
	(301) Operations Restrictions
	(403) Wildfire Management Overlay
	(201) Burn Programme
Ballarat Eastern Surrounds	
	(202) Slashing Programme
	(201) Burn Programme
	(310) Static Water Supply
	(307) Strategic Breaks
	(306) Fire Access Tracks & Roads
	(206) Multiple Fuel Management Regime
	(303) Bushfire Preparedness Plan
	(301) Operations Restrictions
	(403) Wildfire Management Overlay
	(311) Township Protection Plans
	(312) Neighbourhood Safer Places - Places of Last Resort
	(309) Fire Plug Installation & Maintenance

DESCRIPTION	EXISTING TREATMENTS
	Generic Treatments for all Human Settlement
	(101) Community Education Programmes
	(102) Community Education & Engagement Activities
	(104) Public Awareness - Multi Media Communications
	(308) Powerline Hazard Tree Identification, Management & Reporting
	(401) Fire Hazard Inspection Program & Issue of Notices
	(402) Compliance Enforcement of Legislation
	(404) Building Code of Australia
Mt Rowan	
Including sulky	(202) Slashing Programme
	(201) Burn Programme
	(310) Static Water Supply
	(307) Strategic Breaks
	(306) Fire Access Tracks & Roads
	(206) Multiple Fuel Management Regime
	(303) Bushfire Preparedness Plan
	(301) Operations Restrictions
	(403) Wildfire Management Overlay
	(309) Fire Plug Installation & Maintenance
Cardigan Village	
	(205) Other Fuel Hazard Management (incl. Grazing)
	(202) Slashing Programme
	(307) Strategic Breaks
	(309) Fire Plug Installation & Maintenance
Ballarat South West	
	(205) Other Fuel Hazard Management (incl. Grazing)
	(202) Slashing Programme
	(307) Strategic Breaks
	(309) Fire Plug Installation & Maintenance
Ballarat Outskirts West	
	(205) Other Fuel Hazard Management (incl. Grazing)
	(202) Slashing Programme
	(307) Strategic Breaks
	(309) Fire Plug Installation & Maintenance
Miners Rest	
	(205) Other Fuel Hazard Management (incl. Grazing)
	(202) Slashing Programme
	(307) Strategic Breaks
	(309) Fire Plug Installation & Maintenance
Waubra	
	(205) Other Fuel Hazard Management (incl. Grazing)
	(202) Slashing Programme
	(307) Strategic Breaks
	(309) Fire Plug Installation & Maintenance
Learmonth	
	(202) Slashing Programme
	(310) Static Water Supply
	(307) Strategic Breaks
	(206) Multiple Fuel Management Regime
	(303) Bushfire Preparedness Plan
	(301) Operations Restrictions
	(309) Fire Plug Installation & Maintenance
	(201) Burn Programme
Black Hill	
	(202) Slashing Programme
	(201) Burn Programme
	(310) Static Water Supply
	(307) Strategic Breaks
	(306) Fire Access Tracks & Roads
	(206) Multiple Fuel Management Regime
	(303) Bushfire Preparedness Plan
	(301) Operations Restrictions
	(403) Wildfire Management Overlay
Smythes Creek	
	(202) Slashing Programme
	(201) Burn Programme
	(310) Static Water Supply
	(307) Strategic Breaks
	(306) Fire Access Tracks & Roads
	(206) Multiple Fuel Management Regime
	(303) Bushfire Preparedness Plan
	(301) Operations Restrictions
	(403) Wildfire Management Overlay
	(311) Township Protection Plans
	(312) Neighbourhood Safer Places - Places of Last Resort
	(309) Fire Plug Installation & Maintenance

DESCRIPTION	EXISTING TREATMENTS
	Generic Treatments for all Human Settlement
	(101) Community Education Programmes
	(102) Community Education & Engagement Activities
	(104) Public Awareness - Multi Media Communications
	(308) Powerline Hazard Tree Identification, Management & Reporting
	(401) Fire Hazard Inspection Program & Issue of Notices
	(402) Compliance Enforcement of Legislation
	(404) Building Code of Australia
Damascus College Senior Campus	
	(202) Slashing Programme
	(301) Operations Restrictions
	(303) Bushfire Preparedness Plan
	(309) Fire Plug Installation & Maintenance
	(103) Staff Fire Awareness Training
	(313) Critical Egress Roads
	(201) Burn Programme
Mt Clear College	
	(202) Slashing Programme
	(301) Operations Restrictions
	(303) Bushfire Preparedness Plan
	(309) Fire Plug Installation & Maintenance
	(103) Staff Fire Awareness Training
	(313) Critical Egress Roads
	(201) Burn Programme
Emmaus Catholic PS	
	(202) Slashing Programme
	(301) Operations Restrictions
	(303) Bushfire Preparedness Plan
	(309) Fire Plug Installation & Maintenance
	(103) Staff Fire Awareness Training
	(313) Critical Egress Roads
Little Bendigo PS	
	(202) Slashing Programme
	(301) Operations Restrictions
	(303) Bushfire Preparedness Plan
	(309) Fire Plug Installation & Maintenance
	(103) Staff Fire Awareness Training
	(201) Burn Programme
Pax Hill Scout Camp	
	(309) Fire Plug Installation & Maintenance
	(310) Static Water Supply
	(303) Bushfire Preparedness Plan
	(205) Other Fuel Hazard Management (incl. Grazing)
	(201) Burn Programme
University of Ballarat - Mt Helen	
	(202) Slashing Programme
	(301) Operations Restrictions
	(303) Bushfire Preparedness Plan
	(309) Fire Plug Installation & Maintenance
	(103) Staff Fire Awareness Training
	(311) Township Protection Plans
	(312) Neighbourhood Safer Places - Places of Last Resort
	(203) Spraying Programme
	(204) Pruning Programme
	(403) Wildfire Management Overlay
	(313) Critical Egress Roads
	(201) Burn Programme
Brown Hill Kindergarten	
	(202) Slashing Programme
	(301) Operations Restrictions
	(303) Bushfire Preparedness Plan
	(309) Fire Plug Installation & Maintenance
	(103) Staff Fire Awareness Training
	(201) Burn Programme
Scotsburn PS	
	(202) Slashing Programme
	(301) Operations Restrictions
	(303) Bushfire Preparedness Plan

DESCRIPTION	EXISTING TREATMENTS
	Generic Treatments for all Human Settlement
	(101) Community Education Programmes
	(102) Community Education & Engagement Activities
	(104) Public Awareness - Multi Media Communications
	(308) Powerline Hazard Tree Identification, Management & Reporting
	(401) Fire Hazard Inspection Program & Issue of Notices
	(402) Compliance Enforcement of Legislation
	(404) Building Code of Australia
University of Ballarat - Mt Pleasant Accommodation	
	(303) Bushfire Preparedness Plan
	(309) Fire Plug Installation & Maintenance
	(103) Staff Fire Awareness Training
	(403) Wildfire Management Overlay
Glen Park PS	
	(202) Slashing Programme
	(301) Operations Restrictions
	(303) Bushfire Preparedness Plan
	(309) Fire Plug Installation & Maintenance
	(103) Staff Fire Awareness Training
	(201) Burn Programme
Invermay PS	
	(202) Slashing Programme
	(301) Operations Restrictions
	(303) Bushfire Preparedness Plan
	(309) Fire Plug Installation & Maintenance
	(103) Staff Fire Awareness Training
	(201) Burn Programme
Mt Helen Preschool	
	(202) Slashing Programme
	(301) Operations Restrictions
	(303) Bushfire Preparedness Plan
	(309) Fire Plug Installation & Maintenance
	(103) Staff Fire Awareness Training
	(201) Burn Programme
ABC Developmental Learning Centre - Mt Helen	
	(303) Bushfire Preparedness Plan
	(309) Fire Plug Installation & Maintenance
	(103) Staff Fire Awareness Training
	(301) Operations Restrictions
Mt Clear Community Kindergarten	
	(303) Bushfire Preparedness Plan
	(309) Fire Plug Installation & Maintenance
	(103) Staff Fire Awareness Training
	(301) Operations Restrictions
Little Graduates Children's Centre	
	(303) Bushfire Preparedness Plan
	(309) Fire Plug Installation & Maintenance
	(103) Staff Fire Awareness Training
	(301) Operations Restrictions
University of Ballarat - Primary Industries Training Centre	
	(303) Bushfire Preparedness Plan
	(309) Fire Plug Installation & Maintenance
	(103) Staff Fire Awareness Training
	(301) Operations Restrictions
Sovereign Hill	
	(303) Bushfire Preparedness Plan
	(309) Fire Plug Installation & Maintenance
	(103) Staff Fire Awareness Training
	(301) Operations Restrictions
Magpie PS	
	(202) Slashing Programme
	(301) Operations Restrictions
	(303) Bushfire Preparedness Plan
	(309) Fire Plug Installation & Maintenance
	(103) Staff Fire Awareness Training
	(201) Burn Programme

(309) Fire Plug Installation & Maintenance
(103) Staff Fire Awareness Training
(201) Burn Programme

DESCRIPTION	EXISTING TREATMENTS
	Generic Treatments for all Human Settlement
	(101) Community Education Programmes
	(102) Community Education & Engagement Activities
	(104) Public Awareness - Multi Media Communications
	(308) Powerline Hazard Tree Identification, Management & Reporting
	(401) Fire Hazard Inspection Program & Issue of Notices
	(402) Compliance Enforcement of Legislation
	(404) Building Code of Australia
Ballarat Rudolf Steiner Kindergarten and PS	
	(303) Bushfire Preparedness Plan
	(309) Fire Plug Installation & Maintenance
	(103) Staff Fire Awareness Training
	(301) Operations Restrictions
Mt Clear PS	
	(309) Fire Plug Installation & Maintenance
	(103) Staff Fire Awareness Training
	(303) Bushfire Preparedness Plan
University of Ballarat - Mt Clear Accommodation	
	(309) Fire Plug Installation & Maintenance
	(103) Staff Fire Awareness Training
	(403) Wildfire Management Overlay
	(303) Bushfire Preparedness Plan
Mt Helen State Library	
	(202) Slashing Programme
	(301) Operations Restrictions
	(303) Bushfire Preparedness Plan
	(309) Fire Plug Installation & Maintenance
	(103) Staff Fire Awareness Training
	(101) Community Education Programmes
	(311) Township Protection Plans
	(312) Neighbourhood Safer Places - Places of Last Resort
	(404) Building Code of Australia
	(402) Compliance & Enforcement of Legislation
	(203) Spraying Programme
	(201) Burn Programme
Ballarat North to Buangor 66KV Transmission Line	
	(403) Wildfire Management Overlay
	(307) Powerline Hazard Tree Identification, Management & Reporting
	(204) Pruning Programme
Ballarat to Bacchus Marsh 66 KV Transmission Line	
	(301) Operations Restrictions
	(307) Powerline Hazard Tree Identification, Management & Reporting
	(204) Pruning Programme
	(303) Bushfire Preparedness Plan
Ballarat Airport	
	(302) Multiple Stakeholder Engagement Activities
	(310) Static Water Supply
	(309) Fire Plug Installation & Maintenance
	(305) Daily Readiness
	(202) Slashing Programme
BATS-TGTS Transmission Line	
	(301) Operations Restrictions
	(307) Powerline Hazard Tree Identification, Management & Reporting
	(403) Wildfire Management Overlay
	(204) Pruning Programme
	(311) Township Protection Plans
	(312) Neighbourhood Safer Places - Places of Last Resort
	(201) Burn Programme
	(303) Bushfire Preparedness Plan

DESCRIPTION	EXISTING TREATMENTS
	Generic Treatments for all Human Settlement
	(101) Community Education Programmes
	(102) Community Education & Engagement Activities
	(104) Public Awareness - Multi Media Communications
	(308) Powerline Hazard Tree Identification, Management & Reporting
	(401) Fire Hazard Inspection Program & Issue of Notices
	(402) Compliance Enforcement of Legislation
	(404) Building Code of Australia
Glenelg HWY	
	(303) Bushfire Preparedness Plan
	(103) Staff Fire Awareness Training
	(101) Community Education Programmes
	(202) Slashing Programme
Ballarat South Zone Substation	
	(301) Operations Restrictions
	(307) Powerline Hazard Tree Identification, Management & Reporting
	(204) Pruning Programme
	(303) Bushfire Preparedness Plan
Sovereign Hill	
	(303) Bushfire Preparedness Plan
	(309) Fire Plug Installation & Maintenance
	(103) Staff Fire Awareness Training
	(101) Community Education Programmes
	(301) Operations Restrictions
Ballarat Goldfields Mine - Main Site	
	(202) Slashing Programme
	(401) Fire Hazard Inspection Program & Issue of Notices
	(310) Static Water Supply
	(307) Strategic Breaks
	(104) Public Awareness - Multi Media Communications
	(101) Community Education Programmes
	(206) Multiple Fuel Management Regime
	(303) Bushfire Preparedness Plan
	(301) Operations Restrictions
	(402) Compliance & Enforcement of Legislation
	(309) Fire Plug Installation & Maintenance
	(201) Burn Programme

APPENDIX A.2 - STRUCTURE FIRE RISK MANAGEMENT REGISTER

CITY OF BALLARAT

VFRR ASSET CLASS

PROPOSED ASSET SUB CLASS

Human Settlement

RESIDENTIAL

High Density
Urban Living
Interface Living
Rural Living
Motels and Other Accommodation
Caravan Parks
Camps

PUBLIC ASSEMBLY

Entertainment, Leisure & conference Venues
Institutions
Hotels / Night Clubs

HEALTHCARE

Hospitals and Medical Centres
Special Care Facilities

Economic

COMMERCIAL & INDUSTRIAL

Retail/Business - joined or contiguous structures
Retail/Business - separate structures
Industrial
Infrastructure

Cultural Heritage

Heritage Listed and Locally Significant Structures

ASSET SUB CLASS & DEFINITION	LIKELY SCENARIO	LIKELIHOOD	CONSEQUENCE	RISK RATING	EXISTING TREATMENTS	ADDITIONAL TREATMENT RECOMMENDATIONS	TREATMENT PRIORITY	ADDITIONAL TREATMENT RECOMMENDATION COMMENTS
					Generic Treatments Smoke Alarms - for residential (as required) Community Education Programmes Public Awareness - Multi Media Communications National Construction Code - Building Code of Australia Compliance Enforcement of Legislation Hydrants/Fire Plugs Fire Services Response			
Urban Living - residential dwellings in urban areas	Fire starting within the residence	Almost Certain	Low	H				
					JFAIP Program			
					School Education Programmes			
Interface Living - rural/residential dwellings in interface areas	Fire starting within the residence and outbuildings	Almost Certain	Low	H				
					JFAIP Program			
					School Education Programmes			
Rural Living - dwellings and structures in rural areas	Fire starting within structures	Likely	Moderate	H				
					JFAIP Program			
					School Education Programmes			
Motels and Other Accommodation - backpackers, guest houses, boarding houses, special accommodation including assisted accommodation	Fire starting within the building	Almost Certain	Low	H				
					Monitored Fire Alarm			
					Fire Sprinkler/Extinguisher Installation & Maintenance			
Caravan Parks	Fire starting within caravan	Likely	Insignificant	M				
					Emergency Management Plans			
					Caravan Park Fire Safety Guidelines			
					Fire Fighting Equipment Installation & Maintenance			
Camps - school & scout camps	Fire starting within the building	Unlikely	Low	L				
					Emergency Management Plans			
					Fire Sprinkler/Extinguisher Installation & Maintenance			
					Staff Fire Awareness Training			
Entertainment, Leisure & conference Venues - tourist parks, swimming pools, public halls (Council & DSE), sporting clubs, cinemas, gyms, performing art centres	Fire starting within the building	Almost Certain	Moderate	VH				
					Emergency Management Plans as required			
					Fire Sprinkler/Extinguisher Installation & Maintenance			
					Staff Fire Awareness Training as required			
					CFA Brigade Pre Plans			
					OHS Legislation Requirements			
Institutions - kindergartens & childcare facilities, primary, secondary & special schools, universities, neighbourhood houses, religious centres, government buildings	Fire starting within the building	Almost Certain	Moderate	VH				
					Monitored Fire Alarm			
					JFAIP Program			
					Staff Fire Awareness Training			
					Fire Sprinkler/Extinguisher Installation & Maintenance			
					CFA Brigade Pre Plans			
					School Education Programmes			
					OHS Legislation Requirements			
					DEECD Guidelines			

ASSET SUB CLASS & DEFINITION	LIKELY SCENARIO	LIKELIHOOD	CONSEQUENCE	RISK RATING	EXISTING TREATMENTS	ADDITIONAL TREATMENT RECOMMENDATIONS	TREATMENT PRIORITY	ADDITIONAL TREATMENT RECOMMENDATION COMMENTS
					Generic Treatments Smoke Alarms - for residential (as required) Community Education Programmes Public Awareness - Multi Media Communications National Construction Code - Building Code of Australia Compliance Enforcement of Legislation Hydrants/Fire Plugs Fire Services Response			
Hotels / Night Clubs	Fire starting within the building	Almost Certain	Moderate	VH				
					Monitored Fire Alarm			
					Fire Sprinkler/Extinguisher Installation & Maintenance			
					Liquor Licensing Regulations			
					CFA Brigade Pre Plans			
					Staff Fire Awareness Training			
					Emergency Management Plans			
					OHS Legislation Requirements			
Hospitals and Medical Centres	Fire starting within the building	Almost Certain	Major	E				
					Emergency Management Plans			
					Fire Sprinkler/Extinguisher Installation & Maintenance			
					CFA Brigade Pre Plans			
					Staff Fire Awareness Training			
					DHS Guidelines			
Special Care Facilities - day care centres & nursing homes, hostels/hospices	Fire starting within the building	Almost Certain	Moderate	VH				
					Emergency Management Plans			
					Fire Sprinkler/Extinguisher Installation & Maintenance			
					CFA Brigade Pre Plans			
					Staff Fire Awareness Training			
					DHS (tbc) Accreditation			
Retail/Business - joined or contiguous structures - strip shopping areas & shopping centres	Fire starting within/spreading from adjoining building	Almost Certain	Low	H				
					Monitored Fire Alarm			
					Staff Fire Awareness Training			
					Emergency Management Plans			
					Fire Sprinkler/Extinguisher Installation & Maintenance			
					CFA Brigade Pre Plans			
Retail/Business - separate structures	Fire starting within/spreading from adjoining building	Almost Certain	Low	H				
					Monitored Fire Alarm			
					Staff Fire Awareness Training			
					Emergency Management Plans			
					Fire Sprinkler/Extinguisher Installation & Maintenance			
					CFA Brigade Pre Plans			
Industrial - manufacturing, processing, quarries, mines etc.	Fire starting within the building	Almost Certain	Major	E				
					Monitored Fire Alarm			
					Staff Fire Awareness Training			
					Emergency Management Plans			
					Fire Sprinkler/Extinguisher Installation & Maintenance			
					CFA Brigade Pre Plans			

ASSET SUB CLASS & DEFINITION	LIKELY SCENARIO	LIKELIHOOD	CONSEQUENCE	RISK RATING	EXISTING TREATMENTS	ADDITIONAL TREATMENT RECOMMENDATIONS	TREATMENT PRIORITY	ADDITIONAL TREATMENT RECOMMENDATION COMMENTS
					Generic Treatments Smoke Alarms - for residential (as required) Community Education Programmes Public Awareness - Multi Media Communications National Construction Code - Building Code of Australia Compliance Enforcement of Legislation Hydrants/Fire Plugs Fire Services Response			
Infrastructure - minor infrastructure locations - comms, water, gas, power, sewerage, train station, airport etc.	Fire starting within the building	Likely	Moderate	H				
					Monitored Fire Alarm			
					Staff Fire Awareness Training			
					Emergency Management Plans			
					Fire Sprinkler/Extinguisher Installation & Maintenance			
					CFA Brigade Pre Plans			
Critical Infrastructure - critical infrastructure locations - comms, water, gas, power, sewerage, train station, airport etc.	Fire starting within the building	Likely	Major	VH				
					Monitored Fire Alarm			
					Staff Fire Awareness Training			
					Emergency Management Plans			
					Fire Sprinkler/Extinguisher Installation & Maintenance			
					CFA Brigade Pre Plans			
Heritage Listed and Locally Significant Structures - refer to Heritage Overlay, National Trust and Heritage Victoria	Fire starting within the building	Unlikely	Catastrophic	H				
					Staff Fire Awareness Training as required			
					Emergency Management Plans as required			
					Fire Sprinkler/Extinguisher Installation & Maintenance			
					CFA Brigade Pre Plans			

APPENDIX A.3 - HAZARDOUS MATERIALS INCIDENT RISK MANAGEMENT REGISTER

CITY OF BALLARAT

VFRR ASSET CLASS

PROPOSED ASSET SUB CLASS

Human Settlement

RESIDENTIAL

High Density
Urban Living
Interface Living
Rural Living
Motels and Other Accommodation
Caravan Parks
Camps

PUBLIC ASSEMBLY

Entertainment, Leisure & conference Venues
Institutions
Hotels / Night Clubs

HEALTHCARE

Hospitals and Medical Centres
Special Care Facilities

Economic

COMMERCIAL & INDUSTRIAL

Retail/Business - joined or contiguous structures
Retail/Business - separate structures
Industrial
Infrastructure
Transport - rail, marine, road, air

Environmental

Flora & Fauna, Land, Water & Air Quality

Cultural Heritage

Heritage Listed and Locally Significant Structures

ASSET SUB CLASS & DEFINITION	LIKELY SCENARIO	LIKELIHOOD	CONSEQUENCE	RISK RATING	EXISTING TREATMENTS	ADDITIONAL TREATMENT RECOMMENDATIONS	TREATMENT PRIORITY	ADDITIONAL TREATMENT RECOMMENDATION COMMENTS
Urban Living - residential dwellings in urban areas	Chemical Spill	Unlikely	Insignificant	L	Staff Fire Awareness Training Emergency Management Plans Compliance Enforcement of Legislation CFA Brigade Pre Plans OH&S Legislations			
Interface Living - rural/residential dwellings in interface areas	Chemical Spill	Unlikely	Insignificant	L	Staff Fire Awareness Training Emergency Management Plans Compliance Enforcement of Legislation CFA Brigade Pre Plans OH&S Legislations			
Rural Living - dwellings and structures in rural areas	Chemical Spill	Possible	Insignificant	L	Staff Fire Awareness Training Emergency Management Plans Compliance Enforcement of Legislation CFA Brigade Pre Plans OH&S Legislations			
Motels and Other Accommodation - backpackers, guest houses, boarding houses, special accommodation including assisted accommodation	Chemical Spill	Possible	Insignificant	L	Staff Fire Awareness Training Emergency Management Plans Compliance Enforcement of Legislation CFA Brigade Pre Plans OH&S Legislations			
Caravan Parks	Chemical Spill	Possible	Insignificant	L	Staff Fire Awareness Training Emergency Management Plans Compliance Enforcement of Legislation CFA Brigade Pre Plans OH&S Legislations			
Camps - school & scout camps	Chemical Spill	Possible	Insignificant	L	Staff Fire Awareness Training Emergency Management Plans Compliance Enforcement of Legislation CFA Brigade Pre Plans OH&S Legislations			
Entertainment, Leisure & conference Venues - tourist parks, swimming pools, public halls (Council & DSE), sporting clubs, cinemas, gyms, performing art centres	Chemical Spill	Possible	Low	M	Staff Fire Awareness Training Emergency Management Plans Compliance Enforcement of Legislation CFA Brigade Pre Plans OH&S Legislations			

ASSET SUB CLASS & DEFINITION	LIKELY SCENARIO	LIKELIHOOD	CONSEQUENCE	RISK RATING	EXISTING TREATMENTS	ADDITIONAL TREATMENT RECOMMENDATIONS	TREATMENT PRIORITY	ADDITIONAL TREATMENT RECOMMENDATION COMMENTS
Institutions - kindergartens & childcare facilities, primary, secondary & special schools, universities, neighbourhood houses, religious centres, government buildings	Chemical Spill	Possible	Low	M	Staff Fire Awareness Training Emergency Management Plans Compliance Enforcement of Legislation CFA Brigade Pre Plans OH&S Legislations			
Hotels / Night Clubs	Chemical Spill	Possible	Low	M	Staff Fire Awareness Training Emergency Management Plans Compliance Enforcement of Legislation CFA Brigade Pre Plans OH&S Legislations			
Hospitals and Medical Centres	Chemical Spill	Likely	Major	VH	Staff Fire Awareness Training Emergency Management Plans Compliance Enforcement of Legislation CFA Brigade Pre Plans OH&S Legislations			
Special Care Facilities - day care centres & nursing homes, hostels/hospices	Chemical Spill	Possible	Moderate	H	Staff Fire Awareness Training Emergency Management Plans Compliance Enforcement of Legislation CFA Brigade Pre Plans OH&S Legislations			
Retail/Business - joined or contiguous structures - strip shopping areas & shopping centres	Chemical Spill	Likely	Low	H	Staff Fire Awareness Training Emergency Management Plans Compliance Enforcement of Legislation CFA Brigade Pre Plans OH&S Legislations			
Retail/Business - separate structures	Chemical Spill	Likely	Moderate	H	Staff Fire Awareness Training Emergency Management Plans Compliance Enforcement of Legislation CFA Brigade Pre Plans OH&S Legislations			
Industrial - manufacturing, processing, quarries, mines etc.	Chemical Spill	Almost Certain	Moderate	VH	Staff Fire Awareness Training Emergency Management Plans Compliance Enforcement of Legislation CFA Brigade Pre Plans OH&S Legislations			
Infrastructure - minor infrastructure locations - comms, water, gas, power, sewerage, train station, airport etc.	Chemical Spill	Likely	Moderate	H	Staff Fire Awareness Training Emergency Management Plans Compliance Enforcement of Legislation CFA Brigade Pre Plans OH&S Legislations			
Critical Infrastructure - critical infrastructure locations - comms, water, gas, power, sewerage, train station, airport etc.	Chemical Spill	Likely	Major	VH	Staff Fire Awareness Training Emergency Management Plans Compliance Enforcement of Legislation CFA Brigade Pre Plans OH&S Legislations			

ASSET SUB CLASS & DEFINITION	LIKELY SCENARIO	LIKELIHOOD	CONSEQUENCE	RISK RATING	EXISTING TREATMENTS	ADDITIONAL TREATMENT RECOMMENDATIONS	TREATMENT PRIORITY	ADDITIONAL TREATMENT RECOMMENDATION COMMENTS
Transport - rail, marine, road, air	Chemical Spill	Almost Certain	Major	E				
					Staff Fire Awareness Training			
					Emergency Management Plans			
					Compliance Enforcement of Legislation			
					CFA Brigade Pre Plans			
					OH&S Legislations			
Flora & Fauna, Land, Water & Air Quality	Chemical Spill	Likely	Major	VH				
					Staff Fire Awareness Training			
					Emergency Management Plans			
					Compliance Enforcement of Legislation			
					CFA Brigade Pre Plans			
					OH&S Legislations			
Heritage Listed and Locally Significant Structures - refer to Heritage Overlay, National Trust and Heritage Victoria	Chemical Spill	Rare	Moderate	L				
					Staff Fire Awareness Training			
					Emergency Management Plans			
					Compliance Enforcement of Legislation			
					CFA Brigade Pre Plans			
					OH&S Legislations			

Appendix B - Multi Agency Work Plan

Refer to individual appendix B documents as listed below:

Appendix B.1 Multi Agency Bushfire Work Plan

Appendix B.2 Multi agency Structure Fire Work Plan

Appendix B.3 Multi Agency Hazardous Materials Incident Work Plan

BUSHFIRE RISK MANAGEMENT REGISTER - DRAFT

CITY OF BALLARAT

DESCRIPTION	EXISTING TREATMENTS
	Generic Treatments for all Human Settlement
	(101) Community Education Programmes
	(102) Community Education & Engagement Activities
	(104) Public Awareness - Multi Media Communications
	(308) Powerline Hazard Tree Identification, Management & Reporting
	(401) Fire Hazard Inspection Program & Issue of Notices
	(402) Compliance Enforcement of Legislation
	(404) Building Code of Australia
Buninyong and Mt Helen	
	(201) Burn Programme
	(102) Community Education & Engagement Activities
	(305) Daily Readiness
	(310) Static Water Supply
	(202) Slashing Programme
	(203) Spraying Programme
	(309) Fire Plug Installation & Maintenance
	(311) Township Protection Plans
Canadian	
	(303) Bushfire Preparedness Plan
	(201) Burn Programme
	(309) Fire Plug Installation & Maintenance
	(313) Critical Egress Roads
	(305) Daily Readiness
	(102) Community Education & Engagement Activities
	(307) Strategic Breaks
	(312) Neighbourhood Safer Places - Places of Last Resort
	(310) Static Water Supply
	(202) Slashing Programme
Magpie	
	(202) Slashing Programme
	(201) Burn Programme
	(310) Static Water Supply
	(307) Strategic Breaks
	(309) Fire Plug Installation & Maintenance
	(306) Fire Access Tracks & Roads
	(403) Wild Fire Management Overlay
	(206) Multiple Fuel Management Regime
	(303) Bushfire Preparedness Plan
	(301) Operations Restrictions
Invermay	
	(202) Slashing Programme
	(201) Burn Programme
	(310) Static Water Supply
	(307) Strategic Breaks
	(309) Fire Plug Installation & Maintenance
	(306) Fire Access Tracks & Roads
	(312) Neighbourhood Safer Places - Places of Last Resort
	(206) Multiple Fuel Management Regime
	(303) Bushfire Preparedness Plan
	(301) Operations Restrictions
	(311) Township Protection Plans
	(403) Wildfire Management Overlay
Durham Lead	
	(202) Slashing Programme
	(310) Static Water Supply
	(307) Strategic Breaks
	(306) Fire Access Tracks & Roads
	(303) Bushfire Preparedness Plan
	(301) Operations Restrictions
	(403) Wildfire Management Overlay
	(201) Burn Programme
Ballarat Eastern Surrounds	
	(202) Slashing Programme
	(201) Burn Programme
	(310) Static Water Supply
	(307) Strategic Breaks
	(306) Fire Access Tracks & Roads
	(206) Multiple Fuel Management Regime
	(303) Bushfire Preparedness Plan
	(301) Operations Restrictions
	(403) Wildfire Management Overlay
	(311) Township Protection Plans
	(312) Neighbourhood Safer Places - Places of Last Resort
	(309) Fire Plug Installation & Maintenance

DESCRIPTION	EXISTING TREATMENTS
	Generic Treatments for all Human Settlement
	(101) Community Education Programmes
	(102) Community Education & Engagement Activities
	(104) Public Awareness - Multi Media Communications
	(308) Powerline Hazard Tree Identification, Management & Reporting
	(401) Fire Hazard Inspection Program & Issue of Notices
	(402) Compliance Enforcement of Legislation
	(404) Building Code of Australia
Mt Rowan	
Including sulky	(202) Slashing Programme
	(201) Burn Programme
	(310) Static Water Supply
	(307) Strategic Breaks
	(306) Fire Access Tracks & Roads
	(206) Multiple Fuel Management Regime
	(303) Bushfire Preparedness Plan
	(301) Operations Restrictions
	(403) Wildfire Management Overlay
	(309) Fire Plug Installation & Maintenance
Cardigan Village	
	(205) Other Fuel Hazard Management (incl. Grazing)
	(202) Slashing Programme
	(307) Strategic Breaks
	(309) Fire Plug Installation & Maintenance
Ballarat South West	
	(205) Other Fuel Hazard Management (incl. Grazing)
	(202) Slashing Programme
	(307) Strategic Breaks
	(309) Fire Plug Installation & Maintenance
Ballarat Outskirts West	
	(205) Other Fuel Hazard Management (incl. Grazing)
	(202) Slashing Programme
	(307) Strategic Breaks
	(309) Fire Plug Installation & Maintenance
Miners Rest	
	(205) Other Fuel Hazard Management (incl. Grazing)
	(202) Slashing Programme
	(307) Strategic Breaks
	(309) Fire Plug Installation & Maintenance
Waubra	
	(205) Other Fuel Hazard Management (incl. Grazing)
	(202) Slashing Programme
	(307) Strategic Breaks
	(309) Fire Plug Installation & Maintenance
Learmonth	
	(202) Slashing Programme
	(310) Static Water Supply
	(307) Strategic Breaks
	(206) Multiple Fuel Management Regime
	(303) Bushfire Preparedness Plan
	(301) Operations Restrictions
	(309) Fire Plug Installation & Maintenance
	(201) Burn Programme
Black Hill	
	(202) Slashing Programme
	(201) Burn Programme
	(310) Static Water Supply
	(307) Strategic Breaks
	(306) Fire Access Tracks & Roads
	(206) Multiple Fuel Management Regime
	(303) Bushfire Preparedness Plan
	(301) Operations Restrictions
	(403) Wildfire Management Overlay
Smythes Creek	
	(202) Slashing Programme
	(201) Burn Programme
	(310) Static Water Supply
	(307) Strategic Breaks
	(306) Fire Access Tracks & Roads
	(206) Multiple Fuel Management Regime
	(303) Bushfire Preparedness Plan
	(301) Operations Restrictions
	(403) Wildfire Management Overlay
	(311) Township Protection Plans
	(312) Neighbourhood Safer Places - Places of Last Resort
	(309) Fire Plug Installation & Maintenance

DESCRIPTION	EXISTING TREATMENTS
	Generic Treatments for all Human Settlement
	(101) Community Education Programmes
	(102) Community Education & Engagement Activities
	(104) Public Awareness - Multi Media Communications
	(308) Powerline Hazard Tree Identification, Management & Reporting
	(401) Fire Hazard Inspection Program & Issue of Notices
	(402) Compliance Enforcement of Legislation
	(404) Building Code of Australia
Damascus College Senior Campus	
	(202) Slashing Programme
	(301) Operations Restrictions
	(303) Bushfire Preparedness Plan
	(309) Fire Plug Installation & Maintenance
	(103) Staff Fire Awareness Training
	(313) Critical Egress Roads
	(201) Burn Programme
Mt Clear College	
	(202) Slashing Programme
	(301) Operations Restrictions
	(303) Bushfire Preparedness Plan
	(309) Fire Plug Installation & Maintenance
	(103) Staff Fire Awareness Training
	(313) Critical Egress Roads
	(201) Burn Programme
Emmaus Catholic PS	
	(202) Slashing Programme
	(301) Operations Restrictions
	(303) Bushfire Preparedness Plan
	(309) Fire Plug Installation & Maintenance
	(103) Staff Fire Awareness Training
	(313) Critical Egress Roads
Little Bendigo PS	
	(202) Slashing Programme
	(301) Operations Restrictions
	(303) Bushfire Preparedness Plan
	(309) Fire Plug Installation & Maintenance
	(103) Staff Fire Awareness Training
	(201) Burn Programme
Pax Hill Scout Camp	
	(309) Fire Plug Installation & Maintenance
	(310) Static Water Supply
	(303) Bushfire Preparedness Plan
	(205) Other Fuel Hazard Management (incl. Grazing)
	(201) Burn Programme
University of Ballarat - Mt Helen	
	(202) Slashing Programme
	(301) Operations Restrictions
	(303) Bushfire Preparedness Plan
	(309) Fire Plug Installation & Maintenance
	(103) Staff Fire Awareness Training
	(311) Township Protection Plans
	(312) Neighbourhood Safer Places - Places of Last Resort
	(203) Spraying Programme
	(204) Pruning Programme
	(403) Wildfire Management Overlay
	(313) Critical Egress Roads
	(201) Burn Programme
Brown Hill Kindergarten	
	(202) Slashing Programme
	(301) Operations Restrictions
	(303) Bushfire Preparedness Plan
	(309) Fire Plug Installation & Maintenance
	(103) Staff Fire Awareness Training
	(201) Burn Programme
Scotsburn PS	
	(202) Slashing Programme
	(301) Operations Restrictions
	(303) Bushfire Preparedness Plan

DESCRIPTION	EXISTING TREATMENTS
	Generic Treatments for all Human Settlement
	(101) Community Education Programmes
	(102) Community Education & Engagement Activities
	(104) Public Awareness - Multi Media Communications
	(308) Powerline Hazard Tree Identification, Management & Reporting
	(401) Fire Hazard Inspection Program & Issue of Notices
	(402) Compliance Enforcement of Legislation
	(404) Building Code of Australia
University of Ballarat - Mt Pleasant Accommodation	
	(303) Bushfire Preparedness Plan
	(309) Fire Plug Installation & Maintenance
	(103) Staff Fire Awareness Training
	(403) Wildfire Management Overlay
Glen Park PS	
	(202) Slashing Programme
	(301) Operations Restrictions
	(303) Bushfire Preparedness Plan
	(309) Fire Plug Installation & Maintenance
	(103) Staff Fire Awareness Training
	(201) Burn Programme
Invermay PS	
	(202) Slashing Programme
	(301) Operations Restrictions
	(303) Bushfire Preparedness Plan
	(309) Fire Plug Installation & Maintenance
	(103) Staff Fire Awareness Training
	(201) Burn Programme
Mt Helen Preschool	
	(202) Slashing Programme
	(301) Operations Restrictions
	(303) Bushfire Preparedness Plan
	(309) Fire Plug Installation & Maintenance
	(103) Staff Fire Awareness Training
	(201) Burn Programme
ABC Developmental Learning Centre - Mt Helen	
	(303) Bushfire Preparedness Plan
	(309) Fire Plug Installation & Maintenance
	(103) Staff Fire Awareness Training
	(301) Operations Restrictions
Mt Clear Community Kindergarten	
	(303) Bushfire Preparedness Plan
	(309) Fire Plug Installation & Maintenance
	(103) Staff Fire Awareness Training
	(301) Operations Restrictions
Little Graduates Children's Centre	
	(303) Bushfire Preparedness Plan
	(309) Fire Plug Installation & Maintenance
	(103) Staff Fire Awareness Training
	(301) Operations Restrictions
University of Ballarat - Primary Industries Training Centre	
	(303) Bushfire Preparedness Plan
	(309) Fire Plug Installation & Maintenance
	(103) Staff Fire Awareness Training
	(301) Operations Restrictions
Sovereign Hill	
	(303) Bushfire Preparedness Plan
	(309) Fire Plug Installation & Maintenance
	(103) Staff Fire Awareness Training
	(301) Operations Restrictions
Magpie PS	
	(202) Slashing Programme
	(301) Operations Restrictions
	(303) Bushfire Preparedness Plan
	(309) Fire Plug Installation & Maintenance
	(103) Staff Fire Awareness Training
	(201) Burn Programme

	(309) Fire Plug Installation & Maintenance
	(103) Staff Fire Awareness Training
	(201) Burn Programme

DESCRIPTION	EXISTING TREATMENTS
	Generic Treatments for all Human Settlement
	(101) Community Education Programmes
	(102) Community Education & Engagement Activities
	(104) Public Awareness - Multi Media Communications
	(308) Powerline Hazard Tree Identification, Management & Reporting
	(401) Fire Hazard Inspection Program & Issue of Notices
	(402) Compliance Enforcement of Legislation
	(404) Building Code of Australia
Ballarat Rudolf Steiner Kindergarten and PS	
	(303) Bushfire Preparedness Plan
	(309) Fire Plug Installation & Maintenance
	(103) Staff Fire Awareness Training
	(301) Operations Restrictions
Mt Clear PS	
	(309) Fire Plug Installation & Maintenance
	(103) Staff Fire Awareness Training
	(303) Bushfire Preparedness Plan
University of Ballarat - Mt Clear Accommodation	
	(309) Fire Plug Installation & Maintenance
	(103) Staff Fire Awareness Training
	(403) Wildfire Management Overlay
	(303) Bushfire Preparedness Plan
Mt Helen State Library	
	(202) Slashing Programme
	(301) Operations Restrictions
	(303) Bushfire Preparedness Plan
	(309) Fire Plug Installation & Maintenance
	(103) Staff Fire Awareness Training
	(101) Community Education Programmes
	(311) Township Protection Plans
	(312) Neighbourhood Safer Places - Places of Last Resort
	(404) Building Code of Australia
	(402) Compliance & Enforcement of Legislation
	(203) Spraying Programme
	(201) Burn Programme
Ballarat North to Buangor 66KV Transmission Line	
	(403) Wildfire Management Overlay
	(307) Powerline Hazard Tree Identification, Management & Reporting
	(204) Pruning Programme
Ballarat to Bacchus Marsh 66 KV Transmission Line	
	(301) Operations Restrictions
	(307) Powerline Hazard Tree Identification, Management & Reporting
	(204) Pruning Programme
	(303) Bushfire Preparedness Plan
Ballarat Airport	
	(302) Multiple Stakeholder Engagement Activities
	(310) Static Water Supply
	(309) Fire Plug Installation & Maintenance
	(305) Daily Readiness
	(202) Slashing Programme
BATS-TGTS Transmission Line	
	(301) Operations Restrictions
	(307) Powerline Hazard Tree Identification, Management & Reporting
	(403) Wildfire Management Overlay
	(204) Pruning Programme
	(311) Township Protection Plans
	(312) Neighbourhood Safer Places - Places of Last Resort
	(201) Burn Programme
	(303) Bushfire Preparedness Plan

DESCRIPTION	EXISTING TREATMENTS
	Generic Treatments for all Human Settlement
	(101) Community Education Programmes
	(102) Community Education & Engagement Activities
	(104) Public Awareness - Multi Media Communications
	(308) Powerline Hazard Tree Identification, Management & Reporting
	(401) Fire Hazard Inspection Program & Issue of Notices
	(402) Compliance Enforcement of Legislation
	(404) Building Code of Australia
Glenelg HWY	
	(303) Bushfire Preparedness Plan
	(103) Staff Fire Awareness Training
	(101) Community Education Programmes
	(202) Slashing Programme
Ballarat South Zone Substation	
	(301) Operations Restrictions
	(307) Powerline Hazard Tree Identification, Management & Reporting
	(204) Pruning Programme
	(303) Bushfire Preparedness Plan
Sovereign Hill	
	(303) Bushfire Preparedness Plan
	(309) Fire Plug Installation & Maintenance
	(103) Staff Fire Awareness Training
	(101) Community Education Programmes
	(301) Operations Restrictions
Ballarat Goldfields Mine - Main Site	
	(202) Slashing Programme
	(401) Fire Hazard Inspection Program & Issue of Notices
	(310) Static Water Supply
	(307) Strategic Breaks
	(104) Public Awareness - Multi Media Communications
	(101) Community Education Programmes
	(206) Multiple Fuel Management Regime
	(303) Bushfire Preparedness Plan
	(301) Operations Restrictions
	(402) Compliance & Enforcement of Legislation
	(309) Fire Plug Installation & Maintenance
	(201) Burn Programme

PROPOSED ASSET CLASS PROPOSED ASSET SUB CLASS

Human Settlement

RESIDENTIAL

High Density
Urban
Interface Living
Rural
Short Term Accomodation

PUBLIC ASSEMBLY

Entertainment & Leisure Venues
Institutions

HEALTHCARE

Hospitals
Nursing Homes
Special Accomodation
Day Care Centres
Hostels/Hospices

PROPOSED ASSET CLASS PROPOSED ASSET SUB CLASS

Economic COMMERCIAL & INDUSTRIAL

Business Centres
Shopping Centres
Industrial Complexes

AGRICULTURAL & FARMING

Agricultural & Farming

TRANSPORT

Road
Rail
Marine
Air

Environmental

Eco Tourism Venues
Flora Parks & Reserves
Fauna Parks & Reserves

Cultural Heritage

Indigenous Structures
Heritage Listed Structures
Locally Significant Structures

DESCRIPTION & ASSET ID NUMBER	DELIVERABLE MULTI AGENCY TREATMENTS	DETAIL	RESPONSIBLE AGENCY	TREATMENT DELIVER YEARS MARKED WITH X						COMMENTS
				2014-15 COMPLETED Y/N	ADJUSTMENT NEEDED Y/N	2015-16 COMPLETED Y/N	ADJUSTMENT NEEDED Y/N	2016-17 COMPLETED Y/N	ADJUSTMENT NEEDED Y/N	
MUNICIPALITY WIDE		Check the status of fire prevention/ emergency management plans for Council owned and other buildings and assist managers/trustees to prepare and maintain emergency management plans.	Council/CFA							
		Conduct fire safety inspections of high risk buildings, as identified by MFPC, CFA or MBS to address life safety issues and maintenance of essential services.	Council							
		Implement Community Safety Winter campaign.	CFA							
		Inspect fire hydrants regularly to ensure their serviceability.	CFA							
		Implement the provisions of the Bushfire Management Overlay in the City of Ballarat Planning Scheme when assessing planning applications.	Council							
		Review the BMO in the City of Ballarat Planning Scheme.	Council							
		Provide regular inspections of Caravan Parks and support Park owners and managers to complete Emergency Management Plans and promote fire safety.	Council							
		Community Education through a combination of media campaigns, signage and programs such as Isolated Elderly, Home Fire Safety, Fire Ready Victoria to achieve fire prevention, preparedness for structure fires and bushfires. Special focus to include farming practices, rural life stylers and weekenders. This includes provision of "On the land" booklets to new residents.	Council/CFA							
		Promote the use and maintenance of smoke alarms.	CFA							
		Provide advice to requests for assistance on Emergency Management Planning and fire safety matters.	CFA							

PROPOSED ASSET CLASS

PROPOSED ASSET SUB CLASS

PROPOSED ASSET CLASS VFRR ASSET SUB CLASS

Human Settlement

RESIDENTIAL

High Density
Urban
Interface Living
Rural
Short Term Accomodation

PUBLIC ASSEMBLY

Entertainment & Leisure Venues
Institutions

HEALTHCARE

Hospitals
Nursing Homes
Special Accomodation
Day Care Centres
Hostels/Hospices

Economic COMMERCIAL & INDUSTRIAL

Business Centres
Shopping Centres
Industrial Complexes

AGRICULTURAL & FARMING

Agricultural & Farming

TRANSPORT

Road
Rail
Marine
Air

Environmental

Eco Tourism Venues
Flora Parks & Reserves
Fauna Parks & Reserves

Cultural Heritage

Indigenous Structures
Heritage Listed Structures
Locally Significant Structures

DESCRIPTION & ASSET ID NUMBER	DELIVERABLE MULTI AGENCY TREATMENTS		DETAIL	RESPONSIBLE AGENCY	TREATMENT DELIVER YEARS MARKD WITH X						COMMENTS	
	Generic Treatments for all Human Settlement				2014-15 COMPLETED Y/N	ADJUSTMENT NEEDED Y/N	2015-16 COMPLETED Y/N	ADJUSTMENT NEEDED Y/N	2016-17 COMPLETED Y/N	ADJUSTMENT NEEDED Y/N		
MUNICIPALITY WIDE			Provide advice on fire safety and emergency management as required under the Dangerous Goods Regulations 2000	CFA								

Appendix C - Statutory Audit Obligations

Refer to individual appendix C documents as listed below:

Appendix C.1 Hazard Trees Identification and Notification Procedures
Procedures for Identification and Notification of Hazard Trees

Appendix C.2 Community Information Guide

Appendix C.3 Neighbourhood Safer Places – Places of Last Resort

Appendix C.4 Community Fire Refuges

There are no current designated Community Fire Refuges within the City of Ballarat.



Sustaining growth. Strengthening communities.

C.1 – Hazard Trees Identification and Notification Procedures

Procedures for Identification and Notification of Hazard Trees

Section 86 B of the *Electricity Safety Act 1998* (Victoria) (ES Act) provides that a council must identify within its Municipal Fire Prevention Plan: procedures for the identification of trees that are hazardous to electric lines, specifying:

- (a) procedures and criteria for the identification of trees that are likely to fall onto, or come into contact with, an electric line (**hazard trees**); and
- (b) procedures for the notification of responsible persons of trees that are hazard trees in relation to electric lines for which they are responsible.

Under the ES Act, the person responsible for maintaining vegetation and clearance space around power lines is referred to as the '**responsible person**'.

The procedures outlined in this section of the Municipal Fire Management Plan seek to address the requirement detailed above.

Each responsible person should have its own internal procedure regarding the steps that will be taken when it receives notification of a potentially hazardous tree.

What is a hazard tree?

According to the ES Act, a hazard tree is a tree which 'is likely to fall onto, or come into contact with, an electric line'.

The *Electricity Safety (Electric Line Clearance) Regulations 2010* further provide that a responsible person may cut or remove such a tree 'provided that the tree has been assessed by a suitably qualified arborist; and that assessment confirms the likelihood of contact with an electric line having regard to foreseeable local conditions.'

Due to legal requirements which require a clearance space be maintained around an electric line, hazard trees are usually located outside the regulated clearance space. Despite being outside the clearance space, the tree may still have the potential to contact the line due to its size or because of a structural fault or weakness which renders part, or all, of the tree likely to contact or fall onto the line.

Who is responsible for a hazard tree?

Under the ES Act, the person responsible for maintaining vegetation and clearance space around power lines, including keeping the whole or any part of a tree clear of the line, is the responsible person.

Responsibility is allocated between distribution businesses and other owners of electricity infrastructure, land owners and occupiers for clearance of private power lines, public land managers where they are identified as the responsible person such as municipal councils, the Department of Environment and Primary Industries and VicRoads.

Municipal councils are responsible for trees on public land within their municipalities, for which they are the land manager, where these are also within a Declared Area for the purposes of the ES Act. Primary responsibility for vegetation clearance and management within the municipality, for areas which are not within a Declared Area, will usually fall to the relevant electricity distribution company

Responsible Persons within the City of Ballarat

There are a number of organisations that have responsibility for line clearance in the City of Ballarat, including:

- Powercor
- VicRoads
- City of Ballarat

There is only one electricity distribution business in the City of Ballarat and there are no Declared Areas under Section 81 of the ES Act that are the responsibility of the Council.

Other relevant information

Responsible persons, other than private persons, must have an electric line clearance management plan in place for areas for which they have responsibility (*refer Electricity Safety (Electric Line Clearance) Regulations 2010*).

Procedures and Criteria for Identification of Hazard Trees

In the course of everyday duties, potentially hazardous trees may come to the attention of staff or volunteer members of the entities with representation on the Municipal Fire Management Planning Committee, (**the Committee**), staff of the distribution business(es) or other persons, including members of the public.

There are a range of factors which may indicate that a tree is a hazard tree. That is, a tree which is likely to fall onto, or come into contact with, an electric line. Some of these factors will be obvious when looking at the tree but many may only be apparent when the tree is assessed by a person with specific expertise and training, such as an arborist.

The following criteria may be used to assist in identifying a hazard tree:

- The size of the tree suggests that it is likely to come into contact with the electric line, for example because it appears to be encroaching or growing into the line clearance space;
- There is an excessive lean on the tree, or branches hanging off the tree and the tree is in proximity to an electric (power) line; or
- The size or appearance of the tree suggests it could come into contact with the line including under foreseeable local conditions.

If a potentially hazardous tree is identified, the notification procedure outlined below should be followed. Where a responsible person becomes aware of a potentially hazardous tree for which they have responsibility, they must follow their own applicable internal procedure and the notification procedure described below does not apply.

City of Ballarat Municipal Emergency Management	Municipal Fire Management Plan Document. No.	Issue Date December 2011	Review Date September 2014	Version 1.5
---	--	-----------------------------	-------------------------------	----------------

1. Procedures and Criteria for Notification of Hazard Trees

To ensure that information regarding potentially hazardous trees is captured in an efficient manner and, as appropriate, referred to the responsible person for action, the following procedure for the notification of hazardous trees should be followed:

- The person with responsibility for the highest percentage of lines within the municipality (**the primary responsible person**) is Powercor and therefore the person to whom potentially hazardous trees should be reported.
- Where any person becomes aware of, or receives a report of, a potentially hazardous tree within the municipality, this should be referred to Powercor. Where the Committee becomes aware of, or receives a report of, a potentially hazardous tree within the municipality, this must be referred to Powercor.
- Reports of potentially hazardous trees must be provided to Powercor for action as soon as practicable. Reports must include, as far as practicable:
 - The name and contact details and any relevant qualifications where known of the person making the report;
 - As much detail as possible about the location of the tree (including, where known, GPS coordinates, details of numerical/name plate on nearest pole, name of nearest road or crossroads, closest landmark, whether tree is on private land or road reserve etc.);
 - A description of the tree (including, if known, the genus and species of tree);
 - The primary reasons given for the tree being identified as potentially hazardous (including, the tree is in proximity to an electric line **and** there is evidence of structural weakness, excessive lean, appears to be encroaching into line clearance space etc.); and
 - An indication of whether or not urgent action is required.
- Powercor must take all necessary steps to advise the person responsible for the tree that it may be hazardous where they are **not** the responsible person.

Primary Responsible Person Representative

For the purposes of this part of the Plan, the primary responsible person is Powercor.

Contact details for Powercor, are as follows:

Agency name	Powercor
Position title of contact person	Hazard Tree Coordinator
Municipal Hazard Tree Notification Form (click on link)	www.powercor.com.au/docs/pdf/Community%20and%20Environment/Council%20Tree%20Hazard%20Notification%20Form%202011b.pdf
Telephone Number	5338 3300 (Powercor's Contractor VEMCO)
Email address	haztrees@vemco.com.au (Powercor's Contractor VEMCO)
After Hours Number	13 2412

All reporting of Hazardous trees should be directed to Powercor, as the Primary Responsible Person, in the first instance.

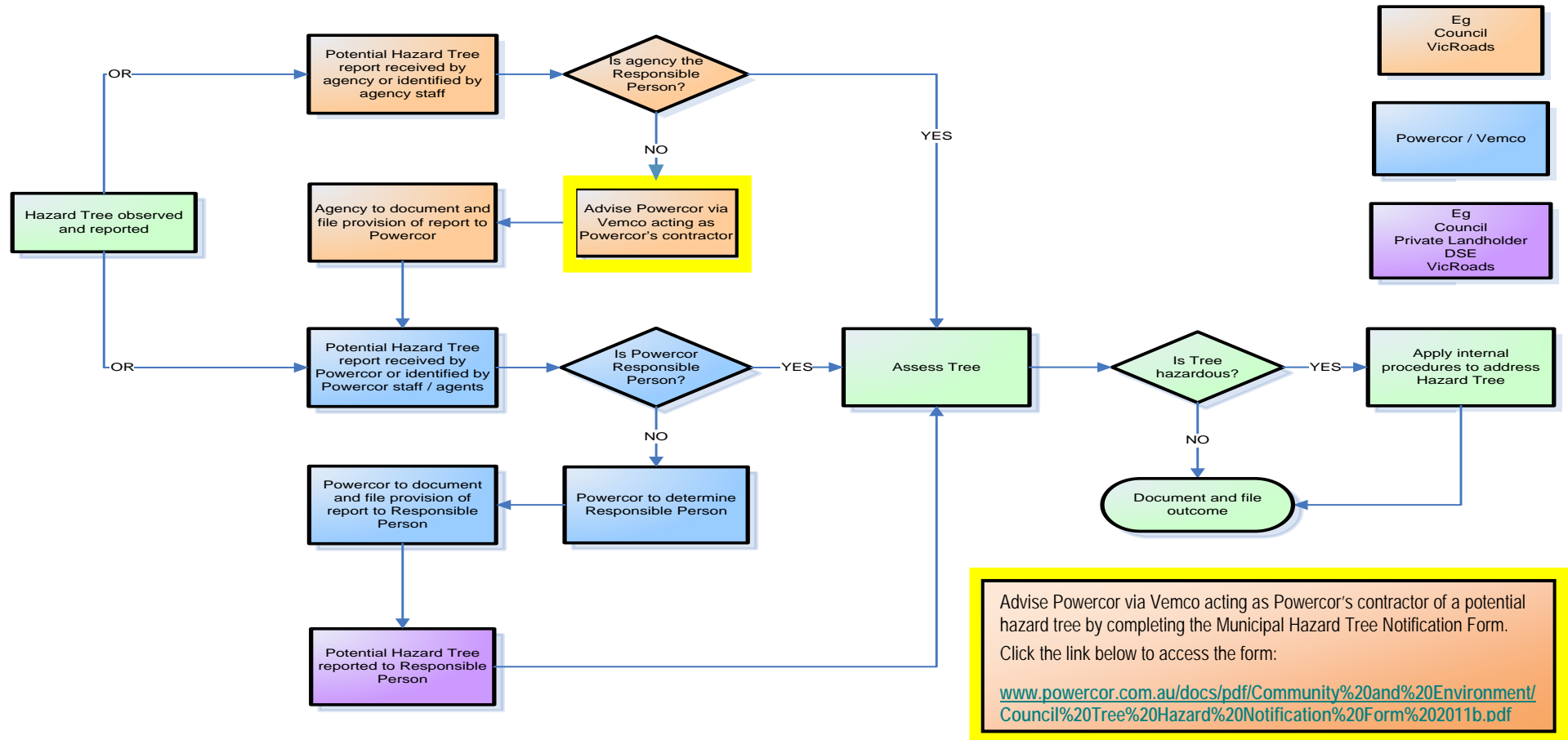
The City of Ballarat's Vegetation Management and Planning Officer will be contacted by Powercor should it be determined that the required works are to be carried out by Council. Contact details for the City of Ballarat's Vegetation Management and Planning Officer are:

Agency name	City of Ballarat
Position title of contact person	Vegetation Management & Planning Officer
Telephone Number	5320 5500
Email address	hazardtrees@ballarat.vic.gov.au
After Hours Number	5320 5500

City of Ballarat Municipal Emergency Management	Municipal Fire Management Plan Document. No.	Issue Date December 2011	Review Date September 2014	Version 1.5
---	--	-----------------------------	-------------------------------	----------------

2. Procedures for Notification of Responsible Persons

Where a potentially hazardous tree has been reported to Powercor or another responsible person, the procedure outlined below should be followed.



Reporting

Powercor and all responsible persons should put in place mutually agreed arrangements for the manner in which reports of potentially hazardous trees are passed on to responsible persons.

Reporting Timelines

Powercor should provide reports to the relevant responsible person as soon as practicable.

In circumstances where:

- The potentially hazardous tree is located within a high bushfire risk area (as per Section 80 of the ES Act) and the potentially hazardous tree is reported during the fire danger period declared under the *Country Fire Authority Act 1958*; or
- The report indicates that there is an imminent danger that the tree will contact or fall onto lines as a result of minor environmental changes

the potentially hazardous tree must be referred to the relevant responsible person for action as soon as possible, and by close of the next business day.

Each responsible person (other than the primary responsible person) must provide Powercor with contact details of the person (position title) to whom reports should be provided. It is the responsibility of each responsible person to ensure that Powercor is provided with up-to-date contact details.

Register

It is recommended that Powercor maintain a register in which all notifications are recorded together with the date of receipt of the notification, and when applicable the date the notification was reported to the responsible person.

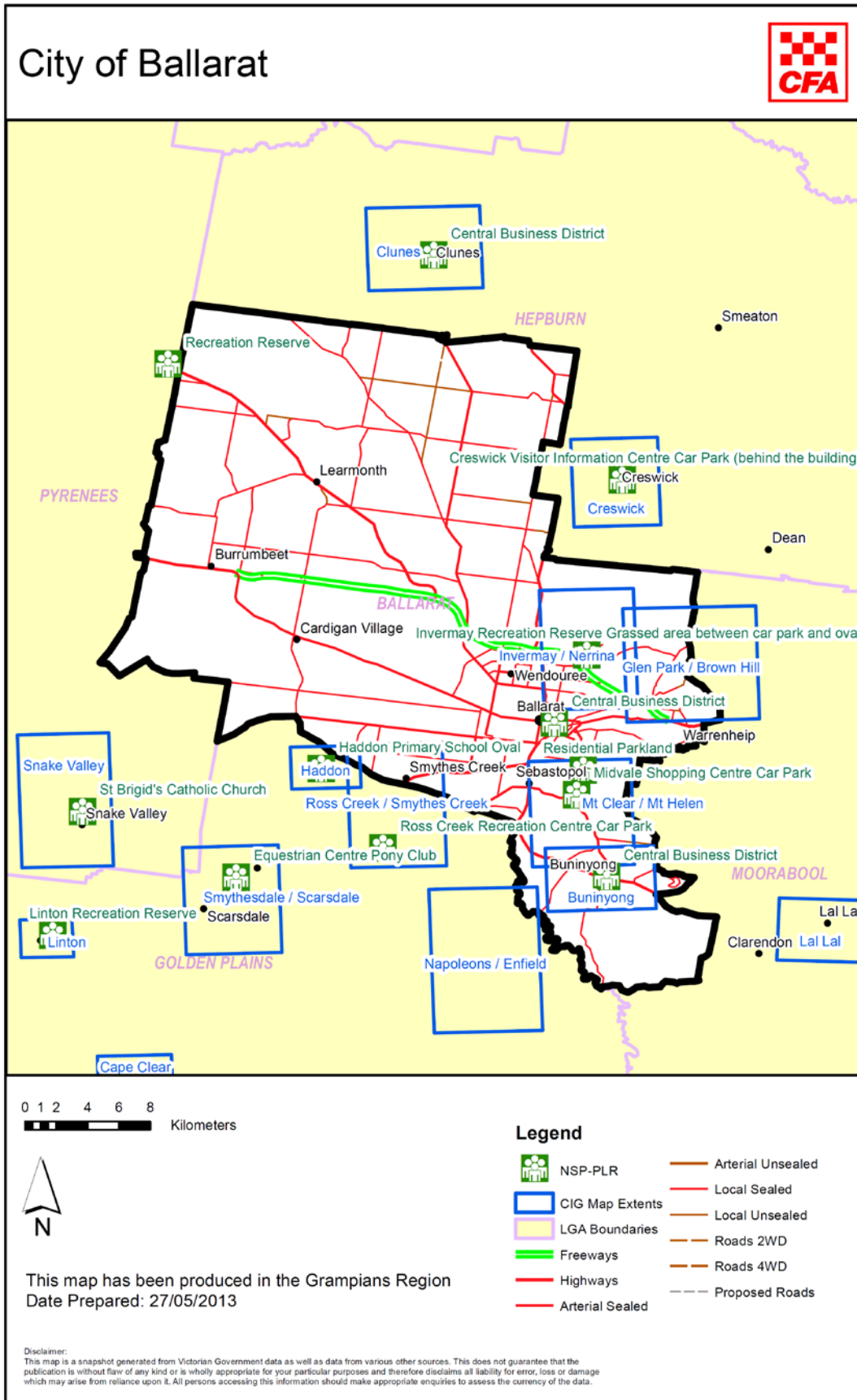
It is recommended that responsible persons also maintain a register of notifications received of hazardous trees for which they are the responsible person.

Primary Responsible Person Consultation

The Committee notes that Powercor as the Primary Responsible Person was consulted in relation to the development of these procedures.

City of Ballarat Municipal Emergency Management	Municipal Fire Management Plan Document. No.	Issue Date December 2011	Review Date September 2014	Version 1.5
---	--	-----------------------------	-------------------------------	----------------

C.2 Community Information Guides



City of Ballarat Municipal Emergency Management	Municipal Fire Management Plan Document. No.	Issue Date December 2011	Review Date September 2014	Version 1.5
---	--	-----------------------------	-------------------------------	----------------

C.2 Community Information Guides (continued)

Currently there are four CIG's in the City of Ballarat. The Municipality and CFA have a shared responsibility for the declaration and review of these CIG's.

City of Ballarat Community Information Guides	
Township/Suburb	Responsible Agencies
Brown Hill and Glen Park	City of Ballarat / Moorabool Shire / CFA
Buninyong	City of Ballarat / CFA
Invermay and Nerrina	City of Ballarat / CFA
Mount Clear and Mount Helen	City of Ballarat / CFA

Currently there are four cross boundary CIG's within the City of Ballarat municipality.

City of Ballarat Cross Boundary Community Information Guides		
Township/Suburb	Responsible Agencies	Cross Boarder Municipality
Brown Hill and Glen Park	City of Ballarat / CFA	Moorabool Shire
Haddon	Golden Plains Shire / CFA	Golden Plains Shire
Ross Creek and Smythes Creek	Golden Plains Shire / CFA	Golden Plains Shire
Napoleons and Enfield	Golden Plains Shire / CFA	Golden Plains Shire

Refer to individual appendix C.2 documents Community Information Guides for specific details at <http://www.cfa.vic.gov.au/plan-prepare/community-information-guides/>

Local Emergency Planning Factors are an internal CFA working document. These documents contain information provided solely for the purpose of assisting the fire agency Incident Controller and supporting agencies. Information contained in these documents is not to be copied or provided to any other person.

Local Emergency Planning Factors can be accessed by an Incident Management Team by following the link below:

X:\00_Operations\Incident Control Shares\60-Reference\Documentation\Grampians\10-LocalResponsePlan

City of Ballarat Municipal Emergency Management	Municipal Fire Management Plan Document. No.	Issue Date December 2011	Review Date September 2014	Version 1.5
---	--	-----------------------------	-------------------------------	----------------

C.3 Neighbourhood Safer Places – Places of Last Resort

City of Ballarat Neighbourhood Safer Places – Places of Last Resort

Township/Suburb	Street	Location
Ballarat Central	Sturt St (between Dawson St & Lydiard St)	Central Business District
Buninyong	Bounded by Learmonth St (Midland Hwy), Inglis Forest & Warreneheip Sts.	Central Business District
Canadian	Provincial Way (between Broderick Crt & Ryder Crt)	Residential Parkland (Open Space)
Invermay	Corner of Muscatel St and Swinglers Rd (Enter off Muscatel St)	Recreation Reserve (grassed area between car park & oval)
Mount Clear	Car Park at rear of Midvale Shopping Centre on corner of Ballarat-Buninyong Rd & Whitehorse Rd	Midvale Shopping Centre Car Park

Adjacent Municipalities Neighbourhood Safer Places – Places of Last Resort

Municipality	Location	Town
Golden Plains	Haddon Primary School Oval, Sago Hill Rd	Haddon
Golden Plains	Ross Creek Recreation Centre Car park, Sebastopol-Smythesdale Rd (near Lacys Rd)	Ross Creek/Smythes Creek
Hepburn	Interpretive Centre (formerly Visitor Information Centre) Car park at rear, Cnr Victoria & Albert St	Creswick
Hepburn	Central Business District, Fraser St (between Templeton & Service Sts)	Clunes
Pyrenees	Waubra Recreation Reserve, 2091 Sunraysia Hwy	Waubra

For a locality reference of the NSP-PLR in the City of Ballarat refer to the map on page C2 and /or <http://www.saferplaces.cfa.vic.gov.au/cfa/search/default.htm>

Appendix D - Engagement and Communications Strategy



Sustaining growth. Strengthening communities.

Appendix D - Engagement and Communications Strategy

1. Executive Summary

This Stakeholder and Community Engagement Strategy was prepared to support the development of the draft City of Ballarat Municipal Fire Management Plan (MFMP) and draft Township Protection Plans (TPP) for the Grampians region.

The City of Ballarat Municipal Fire Management Planning Committee, responsible for development of the Plan, is committed to consulting with stakeholders and the community to develop and further inform the MFMP and validate the TPP information.

Valuing local knowledge and recognising the unique contribution communities and stakeholders can make to the MFMP and TPP planning process, has guided the consultation program.

Effective community engagement and education is essential if the vision for the future of fire management in Victoria is to be achieved. This will occur through:

- active participation of community, the fire management sector and government, collaboratively working and planning together to reduce the destructive impact of fire on communities and the environment;
- communities that have greater resilience to the effects of fire;
- greater understanding of the fire sector within the community; and
- healthy, natural, social, built and economic environments.

The key principles guiding this communication and engagement strategy are transparency, openness and collaboration.

The opportunity to align fire planning consultation with key organisations including the City of Ballarat, Country Fire Authority, Victoria Police and the Department of Environment, Land, Water and Planning was a key objective of this process.

1.1 Stakeholder consultation

Stakeholders involved in fire management planning in the City of Ballarat have been widely consulted and engaged throughout the planning and development of the draft MFMP. This is demonstrated through membership of the Municipal Fire Management Planning Committee and at a regional level through the Regional Strategic Fire Management Planning Committee.

1.2 Community engagement

Community engagement is a high priority for all levels of government. Undertaking effective community engagement is critical to assisting agencies and communities to better plan, prepare, respond and recover from bushfires.

A five-week community consultation program was implemented to support the MFMP and TPP development. Key elements of this program included:

- community information sessions held throughout September 2011 targeting high risk communities such as Brown Hill and Glen Park, Buninyong, Invermay and Nerrina and Mount Clear and Mount Helen;
- stakeholder briefing held in Ballarat on 5 September 2011 for special interest organisations;
- engagement program with CFA brigade and volunteer members; and
- an online engagement program.

1.3 Communications

An extensive communications plan supported the consultation program and raised awareness among the general community about the role of the plans.

Key communications activities included:

- media campaign and advertising of consultation program;
- distribution of flyers and posters through community networks;
- promotion through City of Ballarat, Victoria Police and CFA community networks; and
- direct invitation to key stakeholders.

1.4 Submissions

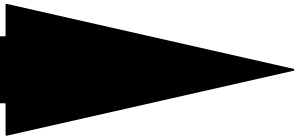
The community were invited to submit feedback in response to the plans. At the conclusion of consultation period (Sunday 9 October 2011), the relevant agency together with the MFMPPC reviewed, assessed and responded to community submissions and updated the MFMP accordingly.

2. Strategic Engagement Framework

The MFMP consultation project team adopted the best practice International Association of Public Participation (IAP2) Framework to guide its engagement activities.

The process involves analyzing the key stakeholders and communities and determining their level of participation in the project to achieve best outcomes. The IAP2 model also guided the development of the Regional Strategic Fire Management Plan.

The IAP2 framework identifies five levels for engagement (on a sliding scale):

Increasing levels of public participation 

	Inform	Consult	Involve	Collaborate	Empower
Who (Full list of stakeholders located in section 5)	General community	Residents and business owners in high-risk fire areas and special interest groups	CFA Brigades & Volunteers	Organisations who have informed development of MFMP	Organisations who are responsible for MFMP. Members of MFMPCC & RSMFPC
Engagement objective	To ensure MFMP engagement process assists in educating community about risk of bushfire	To seek and ensure local knowledge is captured and considered for inclusion in MFMP and TPP.	To gain input and shape MFMP and approach to community engagement	To gain stakeholder support for MFMP and identify cross communications and engagement opportunities with their respective stakeholders	To secure support and commitment for organisations to resource and participate in community engagement program
Promise to the stakeholder/ community	We will keep you informed	We will keep you informed, listen to and acknowledge concerns and aspirations and provide feedback on how public input influenced the decision	We will work with you to ensure that your concerns and aspirations are directly reflected in the alternatives developed, and provide feedback on how public input influenced the decision	We will work with you for advice and innovation in formulating solutions and incorporate your advice and recommendations into the decisions to the maximum extent possible	We will implement what you decide
Tools	1. Media 2. Electronic communications 3. Posters	4. Community Information Sessions 5. Stakeholder Briefings 6. Online engagement 7. Promotion through existing channels	8. Workshops/Presentations with CFA Brigades	9. Direct email for comment on MFMP	10. One-on-one consultation 11. Formal reporting

2.1 Approach to Stakeholder Engagement

A strategic approach to managing stakeholder engagement has been 'in action' since the establishment of the *Integrated Fire Management Framework in 2008*. This is evidenced by the formation of the following committees:

- State Fire Management Planning Committee
- Regional Strategic Fire Management Planning Committee
- Municipal Fire Management Planning Committee

Membership of each committee was carefully considered to ensure that effective **collaboration** could be achieved throughout the development of respective fire management plans.

This means these stakeholders have been involved in each aspect of the decision making process, including the development of alternatives, identification of assets and the prioritisation of actions with a clear understanding of the responsibilities of each stakeholder.

This strategy outlines how engagement with key stakeholders was maintained at an INVOLVE and COLLABORATE level.

It is the intent of this strategy to enhance the engagement process.

2.2 Approach to Community Engagement

The MFMP and TPP development required a significant level of community engagement if it was to genuinely consult with the community and initiate feedback that was meaningful to the process.

To achieve this outcome the appropriate level of engagement was CONSULT (to listen and obtain community feedback about the MFMP and TPP).

This commitment to consultation has meant that all agencies represented in MFMP would support the community consultation program and ensure that community concerns were understood and appropriately considered.

3. Engagement aims and objectives

3.1 Aim

Supported the development of the City of Ballarat Municipal Fire Management Plan through effective community and stakeholder engagement, ensuring local knowledge is captured and considered for inclusion in the MFMP.

3.2 Objectives

- To identify and provide meaningful engagement opportunities for community and stakeholders to understand and provide informed feedback about the MFMP and TPP.
- To provide clear, timely and relevant information to the community and stakeholders about the MFMP and TPP.
- To generate interest and attendance at community engagement events and stakeholder briefing.
- To align (where possible) consultation activities between key agencies including the Country Fire Authority, Victoria Police and Department of Environment, Land, Water and Planning.

3.3 Scope of consultation

An extensive planning process using highly technical and consistent assessment models has been collaboratively undertaken using the combined expertise of fire agency personnel, to develop the MFMP and TPP. As a result of the decision making processes involved there are some components of the plans that are not open for negotiation with the community.

The consultation process sought feedback on additions to the asset risk register, implementation of selected treatment options, validation of TPP local information and comments relating to how community would prefer to be consulted in the future.

Issues pertaining to risk assessment standards and process, government policy and legislation and government position on fire safety initiatives are not within the scope of this consultation project.

4. Positioning and key messages

4.1 Project positioning:

City of Ballarat Municipal Fire Management Plan 2011 – 2014 - A collaborative approach to fire planning.

4.2 Key messages

About the MFMP process:

- The MFMP outlines how all organisations responsible for fire planning and management in the region worked together to identify, mitigate and reduce the destructive impact of fire on our communities and environment.
- Capturing practical local knowledge is critical to the development of the MFMP.
- Council is committed to listening to the community and invite feedback on the MFMP. Have we missed anything?
- How we plan, prepare, respond and recover to bushfire requires a collaborative approach by all levels of government, industry and the community.

About the risk of fire

- The risk of bushfire is real for many Victorian communities.
- You are responsible for understanding your risk of bushfire and what you can do to mitigate the risk.
- Prepare a bushfire survival plan.
- Every individual is responsible for knowing what to do and where to go in case of bushfire.
- Prepare, act, survive

4.3 Key engagement questions

The key questions for stakeholders and community were:

Your local knowledge is important to us – have we missed anything?
You need to prepare for bushfire. Have you talked to us to get the necessary information and tools?

5. Key stakeholders and communities

The table below lists the Stakeholders who contributed and were consulted in the development of the City of Ballarat MFMP.

MFMP Committee Members	MFMP contributors
City of Ballarat CFA Central Highlands Water DEECD DELWP Plantations SES University of Ballarat VicRoads Victoria Police	DHS

The following table outlines key stakeholders and communities who were targeted through the MFMP and TPP consultation program.

	Inform	Consult	Involve	Collaborate	Empower
Who	General community	Residents and business owners in high-risk areas: Brown Hill and Glen Park Buninyong Invermay and Nerrina Mount Clear and Mount Helen Special interest groups: Agricultural Tourism and regional development Members of Parliament Environmental and Landcare Groups Community Groups	CFA Brigades & Volunteers	Organisations who have informed development of MFMP: Central Highlands Water Powercor Dept Transport Plantation Industry SPAusnet Telstra Vline VicTrack ARTC	Members of the MFMP & RSFMP: City of Ballarat CFA DELWP DEECD DPI Water authorities Vic Roads Victoria Police Victoria SES DHS Parks Victoria Vic Roads Other municipal specific stakeholders

6. How community could have their say

Community consultation program for City of Ballarat Municipal Fire Management Plan and Township Protection plans.

The City of Ballarat, together with Country Fire Authority, Victoria Police and Department of Environment, Land, Water and Planning undertook a collaborative approach to bushfire planning community consultation.

Through representation of each agency at a series of community information sessions, they sought to address and support the community with any fire planning, preparedness, response and recovery questions or concerns.

The community were provided an opportunity to review and submit feedback on the City of Ballarat Municipal Fire Management Plan and Township Protection Plans for high-risk communities including Ballarat, Brown Hill, Invermay and Buninyong.

6.1 How community could have their say:

Timeline:	Consultation period Monday 5 September to Sunday 9 October 2011		
Online:	Review MFMP at www.ballarat.vic.gov.au		
Email:	Download MFMP feedback form and email to ballcity@ballarat.vic.gov.au		
In person:	Attend community information session to learn more about MFMP and TPP		
Ballarat	Brown Hill	Invermay	Buninyong
Monday 5 September	Tuesday 6 September	Thursday 8 September	Saturday 17 September
Art Gallery of Ballarat	Russell Square, Ballarat East Cricket Club Rooms	Invermay Recreation Reserve	Buninyong CFA
1.00 pm – 2.00pm 5.30pm - 7.30pm	6.30pm – 8.30pm	6.30pm - 8.30pm	11.00am - 1.00pm

The draft City of Ballarat Municipal Fire Management Plan and Township Protection Plans were submitted to Council for consideration by 31 October 2011.

6.2 How an effective submission was made

- State the plan to which you are referring, as several may be available for consultation at the same time.
- Ensure your text is concise and clear.
- Refer to the page, section number, paragraph and/or objective or strategy upon which you are commenting.
- If you disagree with an objective, strategy or treatment option, state your reasons and outline what you would prefer in its place and why.
- If you have an addition to the asset risk register you would like considered, state your reasons and provide any support material validating your suggested addition.
- If you are commenting on accuracy of information, provide references for your information sources.
- It is also important to identify which sections of the plan you agree or support.

Method for analysing community submissions

Following the closing of community submissions, the City of Ballarat collated the submissions and referred to the relevant agency. Each submission was tabled at the Municipal Fire Management Planning Committee, and if required elevated to the Regional Strategic Fire Management Planning Committee.

Each point made was assessed and the draft MFMP amended using the following criteria:

1. The draft MFMP was amended if the point:
 - proposed strategies that would better achieve or assist with fire management, planning or community education objectives;
 - prompted a re-consideration of additions to asset register or treatment options;
 - indicated omissions, inaccuracies or a lack of clarity of existing information; and/or
 - provided an alternative viewpoint and is considered a better option than that proposed in the draft plan.
2. The draft MFMP was not be amended if the point:
 - addressed issues beyond the scope of the plan (however if a valued point, the issue can be escalated to RSFMPC or SFMPC)
 - offered an open statement or no change is sought;
 - clearly supported the draft MFMP;
 - was an alternate viewpoint received on the topic and the recommendation of the draft plan is still considered the best option;
 - was based on incorrect or incomplete information;
 - contributes options that were not possible (generally due to existing Government policy or legislation); and/or
 - involved points that are not appropriate or necessary for inclusion in the MFMP.

What will happen to your submission?

At the conclusion of the community consultation period, submissions were reviewed by the (City of Ballarat MFMP), directed to the relevant agency (ie CFA) for their consideration and comment. Each submission was tabled at the MFMP and elevated to RSFMPC if required.

Following the review period, the MFMP amended the draft MFMP or the City of Ballarat adopted the MFMP without alteration. The submission may be considered as part of the following year review process.

The final plan is available to the public and on the City of Ballarat website www.ballarat.vic.gov.au

Submissions closed: Sunday 9 October 2011

Written submissions addressed to: Municipal Fire Prevention Officer
City of Ballarat
PO Box 655
Ballarat 3353

Email submissions to: ballcity@ballarat.vic.gov.au

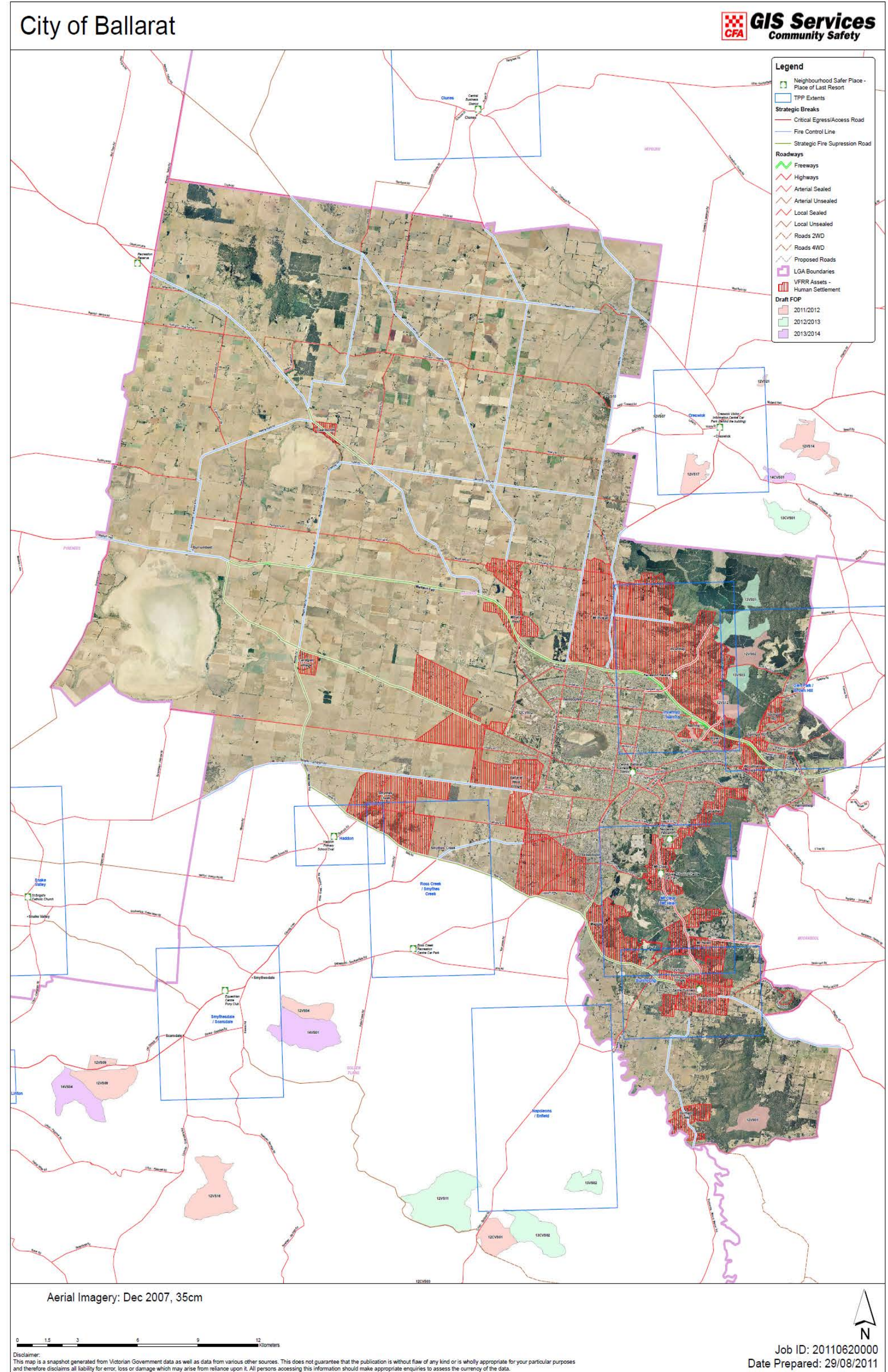
Appendix E - Maps

Refer to individual appendix E documents as listed below:

Appendix E.1 Map of Municipality

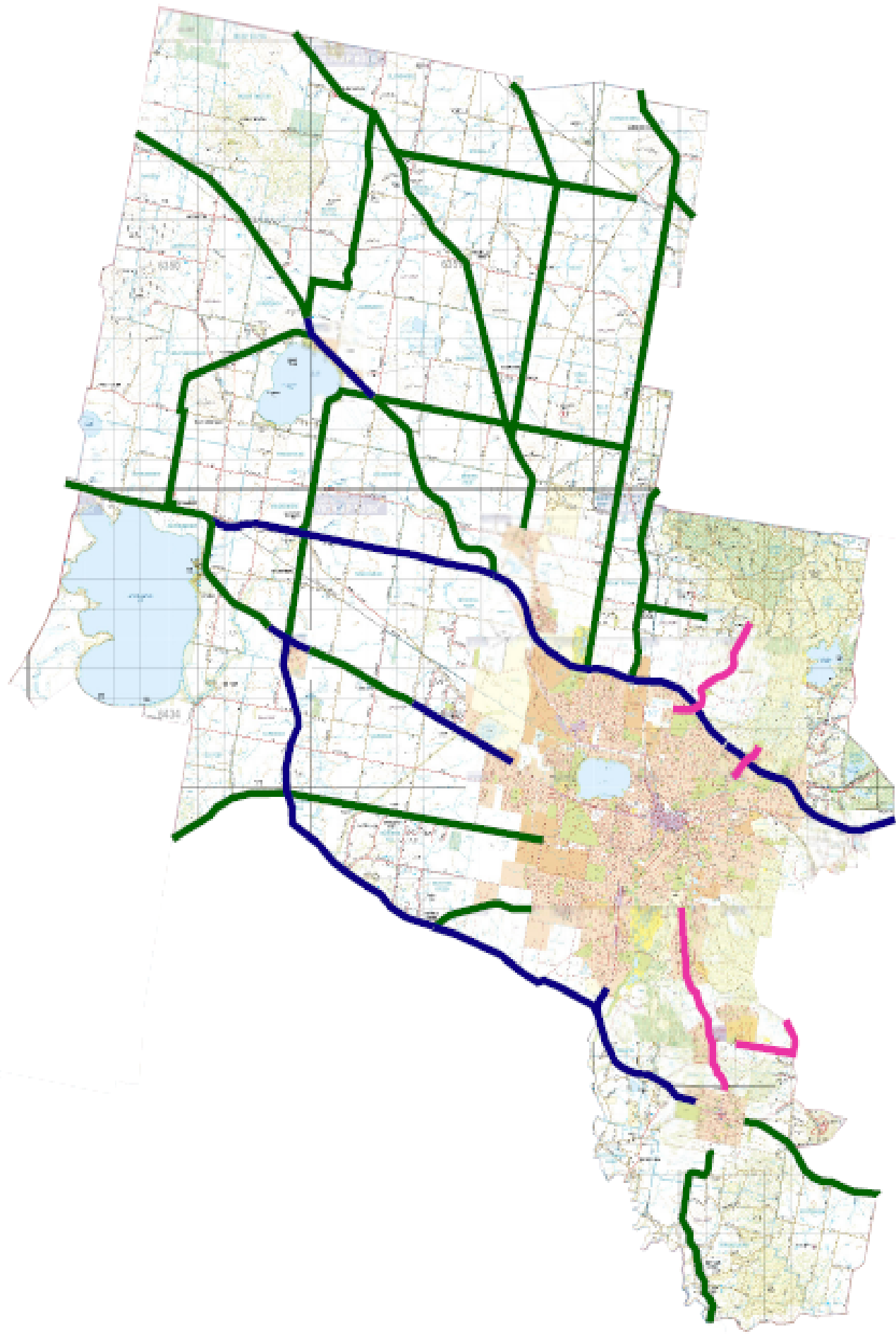
Appendix E.2 Strategic Fire Breaks Map and Table

Appendix E.1 – Municipality Map








City of Ballarat Municipal Emergency Management	Municipal Fire Management Plan Document. No.	Issue Date December 2011	Review Date September 2014	Version 1.5
--	---	-----------------------------	-------------------------------	----------------

City of Ballarat Strategic Fire Breaks



Legend

-  Ballarat_proposed_breaks.shp
-  Strategic Fire Suppression Line
-  Fire Control Line
-  Priority Egress/Access Road
-  Shire Boundaries (LGA's)

Disclaimer:
 This map is a snapshot generated from Victorian Government data as well as data from various other sources. This does not guarantee that the publication is without flaw of any kind or is wholly appropriate for your particular purpose and therefore disclaims all liability for error, loss or damage which may arise from reliance upon it. All persons accessing this information should make appropriate enquiries to assess the currency of the data.

Explanation
 Date Prepared: Fri Oct 14 16:02:14 2011



City of Ballarat Municipal Emergency Management	Municipal Fire Management Plan Document. No.	Issue Date December 2011	Review Date September 2014	Version 1.5
--	---	-----------------------------	-------------------------------	----------------

Proposed Strategic Fire Breaks within the City of Ballarat

Road Name	From	To	Land Manager	Treatment
Strategic Fire Suppression Roads				
Western Fwy/Hwy (M8/A8)	Remembrance Dr (C805), Burrumbeet	Shire Boundary, Richards Rd, Leigh Creek	VicRoads	Slash, Fence to Fence*
Midland Hwy (A300)	Prince St, Sebastopol	Lumeah Rd, Buninyong	VicRoads	Slash, Fence to Fence*
Sunraysia Hwy (B220)	Selwoods Rd, Learmonth	Learmonth-Sulky Rd, Learmonth	VicRoads	Slash, Fence to Fence*
Remembrance Dr (C805)	Dowling Rd, Cardigan	Ring Rd, Alfredton	VicRoads	Slash, Fence to Fence*
Remembrance Dr (C805)	Road Reserve (500m west of Haddon-Windermere Rd) Windermere	East end of the Cardigan Village Estate, Cardigan	VicRoads	Slash, Fence to Fence*
Madden Rd	Remembrance Dr (C805), Cardigan Village	Haddon-Windermere Rd, Cardigan Village	COB	Slash, Fence to Fence*
Haddon-Windermere Rd	Madden Rd, Cardigan Village	Kopkes Rd, Haddon	COB	Slash, Fence to Fence*
Kopkes Rd	Haddon-Windermere Rd, Haddon	Sago Hill Rd, Haddon	COB	Slash, Fence to Fence*
Bells Rd	Sago Hill Rd, Haddon	Sebastopol-Smythesdale Rd, Bonshaw	COB	Slash, Fence to Fence*
Three Chain Rd	Sebastopol-Smythesdale Rd, Bonshaw	Midland Hwy (A300), Sebastopol	COB	Slash, Fence to Fence*
Fire Control Lines				
Western Fwy/Hwy (M8/A8)	Shire Boundary, Dobsons La, Burrumbeet	Remembrance Dr (C805), Burrumbeet	VicRoads	Slash, 3m cut behind guide posts*
Sunraysia Hwy (B220)	Shire Boundary, Beaufort-Waubra Rd, Waubra	Selwoods Rd, Learmonth	VicRoads	Slash, 3m cut behind guide posts*
Sunraysia Hwy (B220)	Learmonth-Sulky Rd, Learmonth	Western Fwy (M8), Miners Rest	VicRoads	Slash, 3m cut behind guide posts*
Ballarat-Maryborough Rd (C287)	Shire Boundary, Cooks Rd, Tourello	Kennedys Rd, Miners Rest	VicRoads	Slash, 3m cut behind guide posts*
Clunes-Creswick Rd (C291)	Shire Boundary, Tourello (1.5km SE of MacRae Rd)	Shire Boundary, Charlesons Rd, Creswick North	VicRoads	Slash, 3m cut behind guide posts*
Midland Hwy (A300)	Shire Boundary, Ballarat-Maryborough Railway, Sulky	Western Fwy (M8), Mt Rowan	VicRoads	Slash, 3m cut behind guide posts*
Midland Hwy (A300)	Lal Lal St, Buninyong	Shire Boundary, Pryors Rd, Scotsburn	VicRoads	Slash, 3m cut behind guide posts*
Glenelg Hwy (B160)	Shire Boundary, Bells Rd, Smythes Creek	Wiltshire La, Delacombe	VicRoads	Slash, 3m cut behind guide posts*
Ballarat-Carngham Rd (C296)	Shire Boundary, Bo Peep (1.1km NE of Haddon Rd)	Wiltshire La, Delacombe	VicRoads	Slash, 3m cut behind guide posts*
Remembrance Dr (C805)	Western Hwy (A8), Burrumbeet	Road Reserve (500m west of Haddon-Windermere Rd) Windermere	VicRoads	Slash, 3m cut behind guide posts*
Remembrance Dr (C805)	Western Hwy (A8) Burrumbeet	Dowling Rd, Cardigan	VicRoads	Slash, 3m cut behind guide posts*
Burrumbeet Rd	Western Hwy (A8), Burrumbeet	Ercildoune Rd, Weatherboard	COB	Slash, 3m cut behind guide posts*
Ercildoune Rd	Burrumbeet Rd, Weatherboard	Weatherboard Rd, Weatherboard	COB	Slash, 3m cut behind guide posts*
Weatherboard Rd	Ercildoune Rd, Weatherboard	Sunraysia Hwy (B220), Learmonth	COB	Slash, 3m cut behind guide posts*
Selwoods Rd	Sunraysia Hwy (B220), Learmonth	Cloverbank Rd, Learmonth	COB	Slash, 3m cut behind guide posts*
Cloverbank Rd	Selwoods Rd, Learmonth	Coghills Creek Rd, Glendaruel	COB	Slash, 3m cut behind guide posts*
Coghills Creek Rd	Shire Boundary, Coutts Rd, Mt Beckworth	Ballarat-Maryborough Rd (C287), Blowhard	COB	Slash, 3m cut behind guide posts*
Glendonell Rd	Coghills Creek Rd, Coghills Creek	Cattle Station Hill Rd, Ascot	COB	Slash, 3m cut behind guide posts*
Windermere-Learmonth Rd	Remembrance Dr (C805), Cardigan Village	Foreshore Rd, Learmonth	COB	Slash, 3m cut behind guide posts*
Foreshore Rd	Windermere-Learmonth Rd, Learmonth	Outlet Rd, Learmonth	COB	Slash, 3m cut behind guide posts*
Outlet Rd	Foreshore Rd, Learmonth	Sunraysia Hwy (B220), Learmonth	COB	Slash, 3m cut behind guide posts*
Learmonth-Sulky Rd	Sunraysia Hwy (B220), Learmonth	Gillies Rd, Bald Hills	COB	Slash, 3m cut behind guide posts*
Gillies Rd	Ballarat-Maryborough Rd (C287), Glendonell	Western Fwy (M8), Mt Rowan	COB	Slash, 3m cut behind guide posts*
Buninyong-Mt Mercer Rd	Webbs Hill Rd, Buninyong	Shire Boundary, Yarrowee River, Durham Lead	COB	Slash, 3m cut behind guide posts*
Frasers Rd	Midland Hwy (A300), Mt Rowan	End of road, Invermay	COB	Slash, 3m cut behind guide posts*
Priority Egress/Access Roads				
Geelong Rd	Canadian Lakes Blvd, Canadian	Union Jack Creek, Buninyong	VicRoads & COB	Slash & Tree Maintenance – Trimming back for safety clearance
Gear Ave	University Dr, Mt Helen	Yankee Flat Rd, Mt Helen	COB	Slash & Tree Maintenance – Trimming back for safety clearance
Yankee Flat Rd	Gear Ave, Mt Helen	Shire Boundary, Greenhill Rd, Mt Helen	COB	Slash & Tree Maintenance – Trimming back for safety clearance
Swinglers Rd	Doveton St Nth, Invermay Park	Creswick State Forest, Invermay	COB	Slash & Tree Maintenance – Trimming back for safety clearance
Lofven St	Glenisla Rd, Nerrina	Hillcrest Rd, Nerrina	COB	Slash & Tree Maintenance – Trimming back for safety clearance

*where practical

Appendix F - Terminology

Appendix F - Terminology

Agencies	Refers to the agencies of the Municipal Fire Management Planning Committee. These include key agencies and organizations such as the Council, DELWP, CFA, HVP, Victoria Police, SES and Water Authorities.
Agency Treatments	Refer to Treatment Definition in <i>Appendix A.1 Multi Agency Bushfire Asset Risk Management Register</i> .
Assets	Anything valued by the community which includes houses, crops, stock, heritage buildings and places, infrastructure, the environment, businesses, and forests, that may be at risk from fire.
Bushfire	A general term used to describe fire in vegetation, including grass fire.
Bushfire Risk	The chance of a bushfire igniting, spreading and causing damage to the community or the assets they value.
Community Safety	Community safety is the collaborative effort by community, government and non-government groups to ensure the safety, wellbeing and stability of society. These efforts are sustained by core values of sustainability, social cohesion, security, cooperation, self-reliance and an improved physical environment. Under such a regime, safer communities are locally organised and resourced, well informed about local risks, proactive in prevention, risk averse, motivated and able to manage the majority of local issues through effective planning and action.
Fire	Comes under the definition of an Emergency. The Emergency Management Act 1986 and the Emergency Management Act 2014 defines 'emergency' as: "... the actual or imminent occurrence of an event which in any way endangers or threatens to endanger the safety or health of any person in Victoria or which destroys or damages, or threatens to destroy or damage, any property in Victoria or in any way endangers or threatens to endanger the environment or an element of the environment in Victoria, including, without limiting the generality of the foregoing and specific to integrated fire management and therefore includes: A fire; and An explosion, A road accident or any other accident, A disruption to an essential service ("essential service" means any of the following services: transport, fuel (including gas), light, power, water, sewerage, or a service (whether or not of a type similar to the foregoing) declared to be an essential service by the Governor in Council) from the effect or impact of fire.
Fire Management	All activities associated with the management of fire (bushfire, structural, chemical), including the use of fire to meet land management goals and objectives. In simple terms, 'fire management' is PPRR as well as use of fire for ecological, agricultural and cultural purposes.
Integrated Fire Management Planning (IFMP)	Integrated Fire Management Planning is a holistic and integrated risk based planning framework for fire management, across all land tenures and boundaries including PPRR activities.
Preparedness	All activities undertaken in advance of the occurrence of an incident to decrease the impact, extent and severity of the incident and to ensure more effective response activities.
Prevention	All activities concerned with minimising the occurrence of incidents, particularly those of human origin.

Recovery	The coordinated process of supporting emergency affected communities in reconstruction of the physical infrastructure and restoration of emotional, social, economic and physical wellbeing.
Response	Actions taken in anticipation of, during and immediately after an incident to ensure that its effects are minimised, and that people affected are given immediate relief and support.
Risk Assessment	The overall process of risk identification, risk analysis and risk evaluation.
Risk Environments	There are four types of risk environments based on the VFRRs risk tool which are Human Settlement, Economic, Environmental and Cultural Heritage.
Risk Identification	The process of determining what, where, when, why and how something could happen.
Victorian Fire Risk Register (VFRR)	Victorian Fire Risk Register is a systematic map based process that identifies assets, assesses assets and provides a range of treatments which contribute to the well being of communities and the environment, which suffer the adverse effects of bushfire.
Vulnerability	The susceptibility of an asset or community to the impacts of fire.

City of Ballarat Municipal Emergency Management	Municipal Fire Management Plan Document. No.	Issue Date December 2011	Review Date September 2014	Version 1.5
---	--	-----------------------------	-------------------------------	----------------

Appendix G - Acronyms

Appendix G - Acronyms

ABS	Australian Bureau of Statistics
BoM	Bureau of Meteorology
CFA	Country Fire Authority
CHW	Central Highlands Water
CIG	Community Information Guide
DET	Department of Education and Training
DELWP	Department Environment, Land, Water and Planning
HVP	Hancock Victorian Plantations
IFMP	Integrated Fire Management Planning
MEMP	Municipal Emergency Management Plan
MEMPC	Municipal Emergency Management Planning Committee
MFMP	Municipal Fire Management Plan
MFMPC	Municipal Fire Management Planning Committee
MFPP	Municipal Fire Prevention Plan
NSP-PLR	Neighbourhood Safer Places – Places of Last Resort
PEAR	Priority Egress/Access Roads
PPRR	Prevention, Preparedness, Response and Recovery
RSFMP	Regional Strategic Fire Management Plan
RSFMPC	Regional Strategic Fire Management Planning Committee
SES	State Emergency Service
VBRC	Victoria Bushfire Royal Commission
VFRR	Victoria Fire Risk Register
BMO	Bushfire Management Overlay

Appendix H - List of Tables

Appendix H - List of Tables

Table 1: Population Profile.....	6
Table 2: Summary of Major Bushfires.....	7
Table 3: Summary of Significant Structure Fires.....	7
Table 4: IFMP Alignment with AS/NZS 31000:2009.....	11
Table 5: Bushfire Priority and VFRR Asset Classes and Sub Classes.....	12
Table 6: Bushfire - Community Education and Engagement Fire Risk Management Strategy.....	13
Table 7: Bushfire - Hazard Reduction Fire Risk Management Strategy.....	13
Table 8: Bushfire - Preparedness Fire Risk Management Strategy.....	14
Table 9: Bushfire - Regulatory Controls Fire Risk Management Strategy.....	14
Table 10: Structure Fire Priority with Asset Classes and proposed sub classes.....	16
Table 11: Structure Fire - Community Education and Engagement Fire Risk Management Strategy.....	17
Table 12: Structure Fire - Hazard Reduction Fire Risk Management Strategy.....	17
Table 13: Structure Fire - Preparedness Fire Risk Management Strategy.....	18
Table 14: Structure Fire - Regulatory Controls Fire Risk Management Strategy.....	18
Table 15: Hazardous Materials Incident Priority with Asset Classes and proposed Sub Classes.....	20
Table 16: Hazardous Materials Incident - Community Education and Engagement Fire Risk Management Strategy	21
Table 17: Hazardous Materials Incident - Hazard Reduction Fire Risk Management Strategy.....	21
Table 18: Hazardous Materials Incident - Preparedness Fire Risk Management Strategy.....	22
Table 19: Hazardous Materials Incident - Regulatory Controls Fire Risk Management Strategy.....	22
Table 20: City of Ballarat Cross Boundary Risks.....	25

Bushfire
Structure Fire
Hazardous Materials Incident

	Actions table proposed in

	Actions table adopted in

City of Ballarat Municipal Emergency Management	Municipal Fire Management Plan Document. No.	Issue Date December 2011	Review Date September 2014	Version 1.5
---	--	-----------------------------	-------------------------------	----------------

Appendix I - Bibliography

Appendix I – Bibliography

- Australian Bureau of Statistics (2006) Census
- BoM website http://www.bom.gov.au/climate/averages/tables/cw_089002.shtml
- City of Ballarat (2009). Municipal Fire Prevention Plan 2009-2012
- City of Ballarat (2010), Municipal Emergency Management Plan 2010-2013
- City of Ballarat (2010) Municipal Council Neighbourhood Safer Place – Places of Last Resort During a Bushfire Plan
- City of Ballarat (2011) Municipal Emergency Management Plan: Terms of Reference Policy
- City of Ballarat (2011). Municipal Emergency Management Plan: Maintenance Policy.
- City of Ballarat, Municipal Fire Management Planning Committee: Terms of Reference
- City of Ballarat. Community Profile, Website: www.ballarat.vic.gov.au.
- Country Fire Authority (2010). Integrated Fire Management Planning Guide
- Country Fire Authority (2010). Transition Guidelines for Municipal Fire Management Plan Committee – Final Version. *Municipal Fire Prevention Committee Transition to Municipal Fire Management Planning Committee: Improving fire management planning together.*
- Country Fire Authority Act (1958)
- Emergency Management Act (1986)
- Local Government Act (1958)
- SGC Economic and Planning, City of Ballarat (2010). City of Ballarat Economic Strategy 2010-2014
- State of Victoria (2009). State Fire Management Strategy 2009
- State of Victoria (2010). Emergency Management Manual of Victoria
- State of Victoria (2010). The Integrated Fire Management Planning Framework
- VicRoads' Bushfire Risk Assessment Guideline

City of Ballarat Municipal Emergency Management	Municipal Fire Management Plan Document. No.	Issue Date December 2011	Review Date September 2014	Version 1.5
---	--	-----------------------------	-------------------------------	----------------

MUNICIPAL FIRE MANAGEMENT PLAN

TREATMENT DEFINITIONS

TREATMENT NAME AND CATEGORY		TREATMENT DEFINITION
TREAT REF.	TREATMENT NAME	
COMMUNITY EDUCATION & ENGAGEMENT		
101	Community Education Programmes	Bushfire education programmes targeted at people living in communities vulnerable to bushfire risk. i.e. Community Fire Guard, fire Ready Victoria, schools programs, whole farm planning (on the land), agricultural fire management, bushfire preparedness
102	Community Education & Engagement Activities	Specific targeted activities undertaken across the broader community spectrum to assist in educating the broader public in relation to bushfire risk. i.e. Fire Action week, state wide media campaign, advice to property owners, campfires etc.
103	Staff Fire Awareness Training	Structured training relating to bushfire risk and behaviour designed to raise staff perception and understanding of bushfire and modify behaviour accordingly where appropriate. Intended audience are staff who may need to traverse or work in areas at risk
104	Public Awareness - Multi Media Communications	Bushfire awareness and related information provided through notice boards, brochures, websites, newspapers, radio, television, public signage, code red days and emergency warnings.
HAZARD REDUCTION		
201	Burn Programme	Includes fuel reduction burns, asset protection, burns on private property for vegetation management and hazard reduction works.
202	Slashing Programme	Reducing fuel loads by cutting back vegetation on land that is owned and managed by State Government.
203	Spraying Programme	Removal of flammable vegetation along private property boundaries to reduce fire hazards.
204	Pruning Programme	Vegetation management along powerline corridors, roadsides and private properties.
205	Other Fuel Hazard Management (including grazing)	Reduction and removal of fuel to decrease the risk of wildfire in preparation for the Fire Danger Period (including grazing) along road & rail corridors.
206	Multiple Fuel Management Regime	Where multiple methods of fuel reduction are utilised either in an integrated strategy or separately at different times.
207	Routine Asset Site Maintenance (including APZ's)	Ongoing mowing/slashing/spraying of sites to reduce fuel loads for protection of assets or adjoining properties.
PREPAREDNESS		
301	Operations Restrictions	Limitation of operations based on fire restrictions including campfire prevention, cessation of specified agricultural activities, etc.
302	Multiple Stakeholder Engagement Activities	Bringing together relevant stakeholders to develop issue specific strategies (plans) and solutions to address identified fire risks and issues.
303	Bushfire Preparedness Plan	An organisational or community plan that sets out what they will do to prepare for bushfires and in the event of a bushfire.
304	Personal Bushfire Preparedness Plan	An individual, group or family plan, that sets out what they will do to prepare for bushfires and in the event of a bushfire.
305	Daily Readiness	Set up and management of Incident Control Centres, Staging, Communications, Aircraft, Plant and people in readiness for wildfire incidents based on trigger levels.
306	Fire Access Tracks & Roads	Constructed and maintained road or track that allows safe passage for firefighting vehicles.
307	Strategic Fire Breaks	A corridor of sufficient width and continuity which provides a substantial barrier to the spread of fire to minimise damage. It also provides areas to assist in safe and efficient fire suppression and may assist in providing fire vehicle access. Fire prev
308	Powerline Hazard Tree Identification, Management and Reporting	Identify trees that pose potential hazards to the integrity of the powerline are to be reported and actioned by the responsible authority.
309	Fire Plug Installation & Maintenance	Works carried out to ensure that the system will operate correctly when required to do so.
310	Static Water Supply	A body of water confined within an enclosure (such as a swimming pool, dam or tank located above or below ground) for use in the event of fire.
311	Community Information Guides	Planned response (for both emergency services and the community) to a bushfire within close proximity to a township, which has the potential to impact on the local community.
312	Neighbourhood Safer Places - Places of Last Resort	Identification and maintenance of approved locations which can be used by members of the community for relocation in the event of a bushfire event to be used as a last resort.
313	Priority Egress/Access Roads	Identification and maintenance of roads which provide critical egress from vulnerable locations in the event of bushfire.
314	Ignition Prevention	Plan for identified facilities from which fire may originate, such as landfills, waste transfer stations, underground powerline placement, plantations etc.
REGULATORY CONTROLS		
401	Fire Hazard Inspection Program & Issue of Notices	Fire prevention activities that are run in preparation for the fire season. Identified fire hazards will be checked and rectified, in accordance with CFA Act.
402	Compliance and Enforcement of Legislation	Active monitoring and enforcement to promote compliance with relevant legislative compliance.
403	Bushfire Management Overlay	Planning control for the use and development of land identified as high fire risk.
404	Building Code of Australia	Control standards for construction of buildings in Bushfire Prone Areas.
OTHER		