

Exceptional Tree Register 2020



Acknowledgements

The City of Ballarat would like to acknowledge that these exceptional trees grow on the traditional land of the Wadawurrung People.

We would like to thank all individuals who nominated trees and raised the profile of this register. Their efforts allowed us to find the exceptional trees that we celebrate here.

We would like to thank the owners and managing authorities of the properties that the trees are on for their assistance in this process and for being custodians of such important assets in our urban forest.

We would also like to thank our experts who made up our selection panel for their time and effort.



Eucalyptus globulus spp. *globulus* (Tasmanian Blue Gum), Scott Parade, Ballarat East

Contents

Introduction

Nominations and Assessment criteria

Tree assessment information

Assessment Selection Criteria

Botanical Name / Common Name / Location / Tree number

Exceptional Tree Register

Lake Burrumbeet Foreshore

Ballarat Avenue of Honour



Dr W. G. Grace Elm, *Ulmus x hollandica* (Dutch Elm), Eastern Oval, Scott Parade, Ballarat East

Introduction

The City of Ballarat's Exceptional Tree Register includes 4298 trees from across the municipality. The register offers, for the first time, the opportunity to recognize, celebrate and protect the exceptional trees that exist on private and public land in our city. The Exceptional Tree Register is a compilation of reports on trees that have been nominated by the community, organizations, property managers, staff and tree owners. The trees were assessed by qualified arborists and an expert panel reviewed and recommended these trees for inclusion in the register.

This register aims to:

Recognize and celebrate the City's trees by promoting and raising awareness of existing exceptional trees.

Support the custodians of Ballarat's exceptional trees by providing expert advice and opportunities to care for their tree/s.

Identify exceptional trees that should be protected through the Ballarat Planning Scheme so that a planning permit is required to undertake any action that may harm the tree/s.

Encourage shared responsibilities for the retention and care of trees that span property boundaries.

Promote tree planting on private properties - trees that may become the exceptional trees of the future and increase canopy cover in our city.



Cedrus atlantica 'Glauca' (Blue Atlas Cedar), Coghills Creek

Nominations and Assessment criteria

The City of Ballarat developed a nomination and assessment process for exceptional trees. Nominations were received from the community, private residents and City of Ballarat staff. Well over 500 trees were nominated either alone or as a group of trees. Trees were assessed by a City of Ballarat arborist. The arborist reports were presented to the expert panel who determined which trees would be included in the register.

The Exceptional Tree Register is a working document that will change to reflect the dynamic nature of our urban forest. Nominations for additional trees can be submitted for the register at any time. We will assess these nominations at an appropriate interval based on the number of nominations received.

Tree assessment information

Criteria for determining exceptional trees in the City of Ballarat are based on criteria used by a number of organizations, including: the National Trust of Australia (Victoria) criteria for identification and classification of significant trees in Victoria; Heritage Victoria criteria for Assessment of Cultural Heritage Significance; the Australian International Charter for the Conservation of Monuments and Sites, Burra Charter criteria and the City of Melbourne. The City of Ballarat adapted these criteria to suit its requirements.

The Exceptional Tree Register Criteria are given in the following table, where a short description and some examples are given for each of the criteria. There are 12 criteria in total and include horticultural value, location or context, rare or localized, particularly old, outstanding size, aesthetic value, curious growth form, historical value, aboriginal association, outstanding example of species, outstanding habitat value, and social, cultural or spiritual significance.

All trees were considered against each 12 selection criteria and if a tree was recognized in three or more of these it was considered an exceptional tree. This was the process used by the expert panel when considering the trees nominated.



Agonis flexuosa (Willow Myrtle) & *Cedrus deodara* (Himalayan Cedar),
Old Shire Office, Learmonth

	Criteria	Description	Examples
1	Horticultural Value	Any tree that is of outstanding horticultural or genetic value and/or an important source of propagating stock.	High tolerance to pest and environmental conditions. Propagating potential (commercial value). Scientific value.
2	Location or Context	Any tree that occurs in a unique location or context so as to provide a major contribution to the landscape and/or local place character.	Important landmark or focal point. Contribution to landscape (high visibility of tree). Remnant native vegetation. Historic planting style.
3	Rare or Localised	Any tree species or variety that is rare or very localised in distribution.	Only known species. Rare species (2-50 known specimens).
4	Particularly Old	Any tree that is particularly old or venerable.	Old specimen.
5	Outstanding Size	Any tree outstanding in size of some capacity.	Height. Trunk diameter. Canopy spread. Combinations of above.
6	Aesthetic Value	Any tree of outstanding aesthetic significance.	Prolific flowering. Beautiful foliage colour. Exceptional form and/or shape.
7	Curious Growth Form	Any tree exhibiting a curious growth form or physical feature.	Curious growth form. Abnormal growth/s. Fusion of branches. Unusually pruned or damaged.
8	Historical Value	Any tree commemorating a particular occasion, including plantings by locally notable people, or having association with an important event in local history.	Well known public figure or group. Historical occasion or event.
9	Aboriginal Association	Any tree that has a recognised association with aboriginal people, or that is valued for continuing and developing cultural traditions.	Scarred tree. Corroboree tree. Canoe tree.
10	Outstanding Example of Species	Any tree considered an outstanding example of its species.	
11	Outstanding Habitat Value	Any tree that has outstanding value as habitat for indigenous wildlife.	Breeding habitat. Roosting site. Foraging habitat. Provides refuge, shelter or protection.
12	Social, Cultural or Spiritual Value	Any tree that is important to a family, community or cultural group for social, cultural or spiritual reasons.	Positive community engagement around a particular tree. Cultural association and sense of place linked to a particular tree. Spiritual importance to a group of people.

Details

This exceptional tree register currently has 64 sites incorporating 4384 trees.

28 of these sites are on private land with 91 trees on the register
25 sites are public land owned by the City of Ballarat Community with 4,202 trees on the register.

The Avenue of Honour includes 3801 trees all on the register

Lake Burrumbeet Foreshore includes 200 trees also on the register

There are 66 different tree species represented on the register

51 different exotic tree species are represented in the register

15 Australian native tree species are also represented in the register

Included in the register is 17 remnant indigenous trees

Ballarat Avenue of Honour

The Ballarat Avenue of Honour is a significant collection of trees starting at the Arch of Victory in Alfredton and finishing at Weatherboard 22 kilometres away. The Avenue was planted in 1917 and consists of 3801 trees of varying species. The Avenue represents the men and women from Ballarat and district that served their country during World War 1. More details about the Avenue are on page 123.

Lake Burrumbeet Foreshore

Lake Burrumbeet has approximately 200+ remnant *Eucalyptus camaldulensis* (River Red Gum) on its foreshore. These trees are all considered as exceptional trees and are included in the register see page 121 for more details.

National Trust Victoria Trees

It was decided that all National Trust Victoria Trees were automatically included on our Exceptional Tree Register. There are currently 128 trees listed with the National Trust Victoria within the City of Ballarat boundary (not including the Avenue trees). 114 of these trees are on City of Ballarat owned land and 14 trees privately owned.



Botanical Name	Common Name	Location	Tree/s Number
<i>Araucaria bidwillii</i>	Bunya Bunya Pine	Ballarat Botanical Gardens	15
<i>Araucaria bidwillii</i>	Bunya Bunya Pine	Midland Highway, Buninyong	92
<i>Abies pinsapo</i>	Spanish Fir	Buninyong Botanic Gardens	19
<i>Abies pinsapo</i>	Spanish Fir	Ballarat Secondary Collage	40
<i>Acer campestre</i>	English Maple	Ballarat Botanical Gardens	9
<i>Acer opalus ssp obtusatum</i>	Italian Maple	Buninyong Botanic Gardens	18
<i>Acer platanoides</i>	Red Norway Maple	Buninyong Botanic Gardens	17
<i>Aesculus hippocastanum</i>	Horse Chestnut	Webster Street, Ballarat	50
<i>Agonis flexuosa</i>	Willow Myrtle	High Street, Learmonth	54
<i>Butia capitata</i>	Butia Palm	Anderson Street, Ballarat	52
<i>Cedrus atlantica 'Glauca'</i>	Blue Atlas Cedar	Midland Highway, Buninyong	91
<i>Cedrus atlantica 'Glauca'</i>	Blue Atlas Cedar	Coghills Creek Road, Coghills Creek	48
<i>Cedrus atlantica 'Glauca'</i>	Blue Atlas Cedar	Morton Street, Mt Pleasant	51
<i>Cedrus atlantica 'Glauca'</i>	Blue Atlas Cedar	Eureka Street, Eureka	25
<i>Cedrus deodara</i>	Himalayan Cedar	High Street, Learmonth	56
<i>Cedrus deodara</i>	Himalayan Cedar	Midland Highway, Buninyong	94
<i>Cedrus deodara</i>	Himalayan Cedar	Bond Street, Mt Pleasant	59
<i>Cedrus deodara</i>	Himalayan Cedar	Skipton Street, Ballarat	71
<i>Cretonia silqua</i>	Carob	Buninyong Botanic Gardens, Buninyong	104
<i>Corymbia ficifolia</i>	Red Flowering Gum	Skipton Street, Redan	62
<i>Corymbia ficifolia</i>	Red Flowering Gum	Victoria Street, Ballarat East	78
<i>Corymbia ficifolia</i>	Red Flowering Gum	Victoria Street, Ballarat East	79
<i>Corymbia ficifolia</i>	Red Flowering Gum	Victoria Street, Ballarat East	80
<i>Cupressus sempervirens</i>	Mediterranean Cypress	High Street, Learmonth	26
<i>Cupressus sempervirens</i>	Mediterranean Cypress	Lexton Street, Ballarat	100
<i>Cupressus sempervirens</i>	Mediterranean Cypress	Lexton Street, Ballarat	101
<i>Eucalyptus aromaphloia</i>	Scent Bark	Haymes Road, Mt Clear	47
<i>Eucalyptus aromaphloia</i>	Scent Bark	Aquila Court, Ballarat North	53
<i>Eucalyptus botryoides</i>	Southern Mahogany	Andrews Place, Lake Gardens	72
<i>Eucalyptus camaldulensis</i>	River Red Gum	Dyte Parade, Ballarat East	75
<i>Eucalyptus camaldulensis</i>	River Red Gum	Lake Burrumbeet	110
<i>Eucalyptus globulus spp globulus</i>	Tasmanian Blue Gum	Ballarat botanical Gardens	12
<i>Eucalyptus globulus spp globulus</i>	Tasmanian Blue Gum	Mair Street, Bakery Hill	29
<i>Eucalyptus globulus spp globulus</i>	Tasmanian Blue Gum	Federation University, Mt Helen	44
<i>Eucalyptus globulus spp globulus</i>	Tasmanian Blue Gum	Scott Parade, Ballarat East	83
<i>Eucalyptus globulus spp globulus</i>	Tasmanian Blue Gum	Scott Parade, Ballarat East	84
<i>Eucalyptus globulus spp globulus</i>	Tasmanian Blue Gum	Scott Parade, Ballarat East	85
<i>Eucalyptus globulus spp globulus</i>	Tasmanian Blue Gum	Scott Parade, Ballarat East	86
<i>Eucalyptus globulus spp globulus</i>	Tasmanian Blue Gum	Scott Parade, Ballarat East	87
<i>Eucalyptus globulus spp globulus</i>	Tasmanian Blue Gum	Scott Parade, Ballarat East	88
<i>Eucalyptus obliqua</i>	Swamp Gum	Shakespeare Avenue, Mt Helen	73
<i>Eucalyptus ovata</i>	Swamp Gum	Australian Ex-Prisoners of War Memorial	102
<i>Eucalyptus radiata</i>	Narrow Leaf Peppermint	Gracefield Road, Warrenheip	38
<i>Eucalyptus viminalis spp viminalis</i>	Manna Gum	Nolan Street, Buninyong	74
<i>Eucalyptus viminalis spp viminalis</i>	Manna gum	Wallaby Track Brown, Hill	77
<i>Eucalyptus viminalis spp viminalis</i>	Manna Gum	White Swan Road, White Swan	55
<i>Eucalyptus viminalis spp viminalis/Eucalyptus ovata</i>	Manna Gum/Swamp Gum	Midland Highway, Buninyong	89
<i>Eucalyptus yarriensis</i>	Yarra Gum	Enterprise Grove, Mt Helen	70
<i>Fraxinus excelsior 'Pendula'</i>	Weeping European Ash	Ballarat Botanical Gardens	7
<i>Grevillia robusta</i>	Silky Oak	Scott Parade, Ballarat	108
<i>Halocarpus bioformis</i>	Yellow Pine	Plane Avenue, Victoria Park	21
<i>Juglans regia</i>	Walnut	Tourello Road, Tourello	30
<i>Juniperus virginiana</i>	Red Cedar	Lake Wendouree	8
<i>Picea abies</i>	Norway Spruce	Midland Highway, Buninyong	93
<i>Picea sitchensis</i>	Sitka Spruce	Ballarat botanical Gardens	1
<i>Pinus canariensis</i>	Canary Island Pine	Barkly Street, Ballarat	32
<i>Pinus contorta var. Contorta</i>	Beach Pine	Plane Avenue, Victoria Park	22
<i>Pinus ponderosa</i>	Western Yellow Pine	Ballarat Botanical Gardens	10
<i>Pinus nigra var. corsicana</i>	Corsican Pine	Scott Parade, Ballarat	28
<i>Populus deltoides</i>	Eastern Cottonwood	Ballarat Botanical gardens	96
<i>Populus deltoides</i>	Eastern Cottonwood	Kirks Reservoir Gardens, Brown Hill	76
<i>Populus alba</i>	White Poplar	Buninyong botanic Gardens	103
<i>Populus tremula</i>	Aspen	Ballarat Airport	49

Botanical Name	Common Name	Location	Tree/s Number
Quercus canariensis	Algerian Oak	Kirks Reservoir Gardens, Brown Hill	45
Quercus canariensis	Algerian Oak	Ballarat Botanical Gardens	97
Quercus canariensis	Algerian Oak	Buninyong Botanic Gardens	105
Quercus canariensis	Algerian Oak	Sturt Street, Ballarat	81
Quercus canariensis	Algerian Oak	Sturt Street, Ballarat	82
Quercus canariensis	Algerian Oak	Herriot Street, Buninyong	36
Quercus cerris	Turkey Oak	Ballarat Botanical Gardens	2
Quercus nigra	Water Oak	Kirks Reservoir Gardens, Brown Hill	46
Quercus palustris	Pin Oak	Sturt Street, Ballarat	39
Quercus robur	English Oak	Ballarat Botanical Gardens	3
Quercus robur	English Oak	Gillies Street, Lake Wendouree	68
Quercus robur	English Oak	Lofven Street, Nerrina	57
Quercus robur	English Oak	Victoria Street, Ballarat East	60
Quercus robur	English Oak	Talbot Street, Redan	61
Quercus robur	English Oak	Ligar Street, Soldiers Hill	65
Quercus robur 'Concordia'	Golden Oak	Gnarr Street, Lake Wendouree	31
Quercus robur 'Fastigiata'	Fastigiated English Oak	Plane Avenue, Victoria Park	23
Quercus suber	Cork Oak	Ligar Street, Ballarat East	42
Quercus robur	English Oak	Mair Street, Ballarat	34
Sequoia giganteum	Sierra Redwood	Ballarat Botanical Gardens	13
Sequoia sempervirens	Californian Redwood	Ballarat Botanical Gardens	14
Sequoia sempervirens	Californian Redwood	Midland Highway, Buningong	90
Sequoia sempervirens	Californian Redwood	Gregory Street, Lake Wendouree	58
Sequoiadendron giganteum	Sierra Redwood	Ballarat Botanical Gardens	43
Schinus molle	Peppercorn Tree	Hill Street, Mt Pleasant	67
Sophora japonica	Weping Pogoda Tree	Eureka Stockade	24
Taxodium distichum	Swamp Cypress	Ballarat Botanical Gardens	4
Tilia x europaea	Common Linden	Mair Street, Ballarat	35
Ulmus glabra 'Camperdownii'	Camperdown Elm	Wendouree Parade, Lake Wendouree	63
Ulmus glabra 'Camperdownii'	Camperdown Elm	Howitt Street, Ballarat north	107
Ulmus glabra 'Camperdownii'	Camperdown Elm	Ballarat Botanical Gardens	99
Ulmus glabra 'Camperdownii'	Camperdown Elm	Eureka Street, Ballarat East	37
Ulmus glabra 'Exoniensis'	Exeter Elm	Ballarat Botanical Gardens	16
Ulmus glabra 'Horizontalis'	Weeping Wych Elm	Buninyong Botanic Gardens	106
Ulmus glabra 'Louis van Houtte'	Golden Elm	Ballarat Botanical Gardens	99
Ulmus glabra 'Lutescens'	Golden Wych Elm	Lydiard Street, Ballarat	95
Ulmus glabra 'Pendula'	Weeping Scotch Elm	Ballarat Botanical Gardens	5
Ulmus x hollandica	Dutch Elm	St Glen's Way, Lake Gardens	66
Ulmus x hollandica	Dutch Elm	Gillies road, Mt Rowan	41
Ulmus x hollandica	Dutch Elm	Peel Street, Ballarat	27
Ulmus x hollandica 'Wredei'	Golden Elm	Ballarat Botanical Gardens	11
Ulmus x hollandica/Quercus robur	Dutch Elm/English Oak	Old Melbourne Road, Brown Hill	109
Ulmus parvifolia	Chinese Elm	Learmonth Street, Buninyong	20
Ulmus minor 'Variegata	Silver Elm	McPhie Place, Lake Gardens	64
Ulmus minor 'Variegata'	Silver Elm	Mair Street, Ballarat	33
Ulmus viminalis	Hybrid Elm	Lydiard Street, Ballarat North	69
Vitex lucidus	Puriri	Ballarat Botanical Gardens	6

Tree 1: *Picea sitchensis*

Location: Ballarat Botanical Gardens
Botanical Name: *Picea sitchensis*
Common Name: Sitka Spruce
Origin: Western Coast of Canada and Alaska
Number of trees: 1
Access: Unrestricted
National Trust (Victoria) Tree: Yes Health:
Good
Structure: Good
Estimated Age: 155
Height (m): 36
Spread (m): 20

This Sitka Spruce is an attractive and well-formed specimen within a fine collection of conifers, including the Sequoiadendron Avenue, that were believed to have been planted in 1862. The Sitka Spruce is named after Sitka, Alaska although its natural range is along the coast of Northwest America. In the Northern Hemisphere it is grown commercially for timber and paper production.

This specimen is an exceptional tree in terms of categories Location or Context, Rare or Localised, Particularly Old, Outstanding Size, Aesthetic Value and Outstanding Example of Species.



Tree 2: *Quercus cerris*

Location: Ballarat Botanical Gardens
Botanical Name: *Quercus cerris*
Common Name: Turkey Oak
Origin: Europe and Asia Minor Number
of trees: 1
Access: Unrestricted
National Trust (Victoria) Tree: Yes
Health: Good
Structure: Excellent
Estimated Age: 135
Height (m): 25
Spread (m): 30

This Turkey Oak is located at the start of the Prime Ministers Walk, between Alfred Deakin and GH Reid bust. A very large spreading canopy and reported to be the largest known example of this species in Victoria. *Quercus cerris* is native to southeast Europe and Asia Minor and is widely planted and naturalised throughout much of Europe.

This specimen is an exceptional tree in terms of categories 2. (Location or Context), 4. (Particularly Old), 5. (Outstanding Size), 6. (Aesthetic Value) and 10. (Outstanding Example of Species).



Tree 3: *Quercus robur*

Location: Ballarat Botanical Gardens

Botanical Name: *Quercus robur*

Common Name: English Oak

Origin: Europe

Number of trees: 1

Access: Unrestricted

National Trust (Victoria) Tree: Yes

Health: Good

Structure: Good

Estimated Age: 147

Height (m): 25

Spread (m): 29

This English Oak, known as the 'Druids Oak' was planted by the Druids of Ballarat on 27 December 1870 to commemorate the founding of local Druid Lodges. Oaks were associated with the ancient traditions of the original Druids who met in groves of Oak trees. It is located at the rear of Adam Lindsay Gordon's Cottage. This specimen is an exceptional tree in terms of categories 2. (Location or Context), 4 (Particularly Old), 5 (Outstanding Size), 6 (Aesthetic Value), 8 (Historical Value) and 12 (Social, Cultural or Spiritual value).



Tree 4: *Taxodium distichum*

Location: Ballarat Botanical Gardens

Botanical Name: *Taxodium distichum*

Common Name: Swamp Cypress

Origin: South-eastern United States.

Number of trees: 2

Access: Unrestricted

National Trust (Victoria) Tree: Yes

Health: Good

Structure: Excellent

Estimated Age: 100

Height (m): NW tree 18 NE tree 19

Spread (m): NW tree 13 NE tree 17

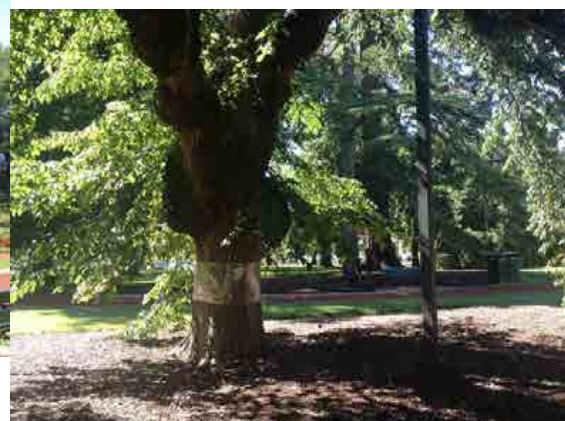
These two specimens are located on the Northeast side and Northwest side of the Statue House. The Northeast tree has particularly attractive autumn foliage. Swamp or Bald Cypress is a deciduous conifer that comes from the south eastern areas of America and can tolerate long periods where the roots are in standing water. These specimens are exceptional trees in terms of categories 2. (Location or Context), 3, (Rare or Localised), 5 (Outstanding Size), 6 (Aesthetic Value) and 10 (Outstanding Example of Species).



Tree 5: *Ulmus glabra* 'Pendula'

Location: Ballarat Botanical Gardens
Botanical Name: *Ulmus glabra* 'Pendula'
Common Name: Weeping Scotch Elm
Origin: England
Number of trees: 1
Access: Unrestricted
National Trust (Victoria) Tree: Yes
Health: Good
Structure: Fair
Estimated Age: 155
Height (m): 15
Spread (m): 15

This tree, located 70 metres south of the Conservatory, is the last remaining tree of three original Weeping Scotch Elms growing in the Gardens. They were noted as being a pleasant group and some of the tallest known examples of this species. The other two trees were removed prior to 2011 (one died, and one fell over). This specimen has been "propped" to prevent it falling and is slowly recovering. This specimen is an exceptional tree in terms of categories 1. (Horticultural Value), 2. (Location or Context), 3. (Rare or Localised), 4 (Particularly Old), 5 (Outstanding Size) and 6 (Aesthetic Value).



Tree 6: *Vitex lucens*

Location: Ballarat Botanical Gardens

Botanical Name: *Vitex lucens*

Common Name: Puriri

Origin: New Zealand

Number of trees: 1

Access: Unrestricted

National Trust (Victoria) Tree: Yes

Health: Good

Structure: Good

Estimated Age: 85

Height (m): 18

Spread (m): 14

Located at rear of Adam Lindsay Gordon's Cottage and adjacent to the Druid's Oak. *Vitex lucens* is endemic to New Zealand and provides highly valued hardwood. An evergreen tree with pinkish red flowers produced in winter. Rare in cultivation in Victoria (first collected at Tolaga Bay by Banks and Solander during Captain Cook's first visit there in 1769) with other examples known at Portland, Coolart and the Royal Botanic Gardens Melbourne. This specimen is an exceptional tree in terms of categories 1. (Horticultural Value), 2. (Location or Context), 3. (Rare or Localised), 5 (Outstanding Size) and 6 (Aesthetic Value).



Tree 7: *Fraxinus excelsior* 'Pendula'

Location: Ballarat Botanical Gardens

Botanical Name: *Fraxinus excelsior* 'Pendula'

Common Name: Weeping European Ash

Origin: Europe and Asia Minor

Number of trees: 1

Access: Unrestricted

National Trust (Victoria) Tree: Yes

Health: Fair

Structure Fair

Estimated Age: 115

Height (m): 12

Spread (m): 11

An unusual specimen with lots of character and quite rare at this size and age. It is estimated to be about 115 years old. This species is native to Europe and Asia minor and has been cultivated for centuries in European gardens. This specimen is an exceptional tree in terms of categories 1. (Horticultural Value), 2. (Location or Context), 3. (Rare or Localised), 4. (Particularly Old), 5. (Outstanding Size) and 6. (Aesthetic Value).



Tree 8: *Juniperus virginiana*

Location: Lake Wendouree Botanical

Name: *Juniperus virginiana* Common

Name: Red Cedar

Origin: North America and Canada

Number of trees: 1

Access: Unrestricted

National Trust (Victoria) Tree: Yes Health:

Good

Structure: Fair

Estimated Age: 100

Height (m): 19

Spread (m): 12

This is an outstanding and rare tree, being the best example of the *Juniperus virginiana* known in cultivation in Victoria, other examples known at Sale, Bendigo (White Hills Garden) and Maryborough (Phillips Gardens). This species of juniper is a slow growing native of eastern North America from south eastern Canada to the Gulf of Mexico. It has a marked lean towards the west and has been "propped" to prevent it from falling.

This specimen is an exceptional tree in terms of categories 1. (Horticultural Value), 3. (Rare or Localised), 4. (Particularly Old), 7. (Curious Growth Form) and 10. (Outstanding Example of Species).



Tree 9: *Acer campestre*

Location: Ballarat Botanical Gardens
Botanical Name: *Acer campestre*
Common Name: Field Maple
Origin: Europe, Southwest Asia and Northern Africa
Number of trees: 1
Access: Unrestricted
National Trust (Victoria) Tree: Yes
Health: Good
Structure: Excellent
Estimated Age: 90
Height (m): 16
Spread (m): 17

This tree is a fine example of this species in Ballarat and the largest known specimen. It has a well-shaped symmetrical crown and set amongst a group of exceptional trees located south of the Conservatory. A much larger example of this species was nearby but was in decline and removed in 1994 as part of Conservatory development. This



Tree 10: *Pinus ponderosa*

Location: Ballarat Botanical Gardens

Botanical Name: *Pinus ponderosa*

Common Name: Western Yellow Pine

Origin: United States and Canada

Number of trees: 1

Access: Unrestricted

National Trust (Victoria) Tree: Yes

Health: Good

Structure: Good

Estimated Age: 140

Height (m): 39

Spread (m): 19

This *Pinus ponderosa* is an imposing specimen and one of the tallest trees in the Ballarat Botanical Gardens. It is noted for its beautiful bark. It is located near the 'Statue of Summer'. In the middle of the 19th century, the *Pinus ponderosa* was planted in the Ballarat Botanical Gardens to see how it would acclimatise. This specimen is an exceptional tree in terms of categories 2. (Location or Context), 3. (Rare or Localised), 4. (Particularly Old), 5. (Outstanding Size), 6. (Aesthetic Value), Historical Value) and 10. (Outstanding Example of Species).



Tree 11: *Ulmus x hollandica* 'Wredei'

Location: Ballarat Botanical Gardens

Botanical Name: *Ulmus x hollandica* 'Wredei'

Common Name: Golden Elm

Origin: Exotic

Number of trees: 2

Access: Unrestricted

National Trust (Victoria) Tree: Yes

Health: Good

Structure: Good

Estimated Age: 100

Height (m): Tree1 17 Tree2 18

Spread (m): Tree1 13 Tree2 15

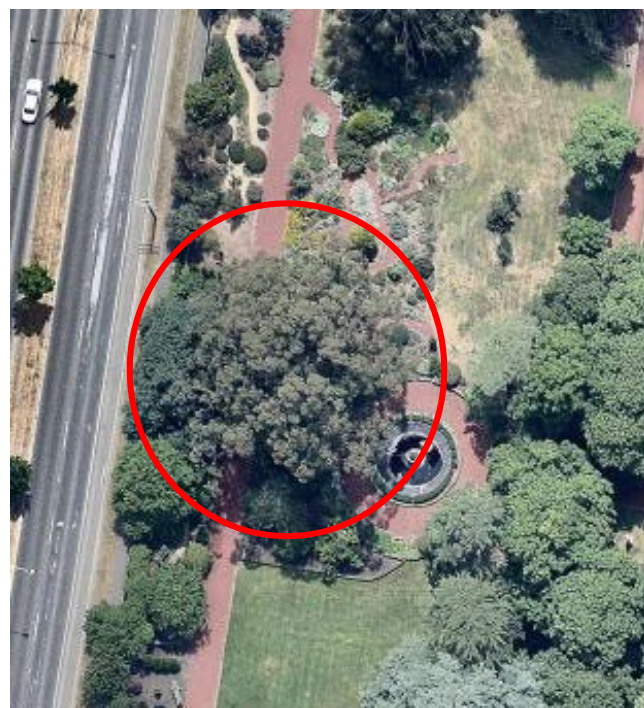
These two Golden Elms are located 25 and 95 metres south of Conservatory at each end of a row of different elm species. They are mature specimens of this very unusual Elm, rare in cultivation in Victoria. Only other known examples occur in the Royal Botanic Gardens, Melbourne, and Central Park, Malvern. These two specimens are exceptional trees in terms of categories 1. (Horticultural Value), 2. (Location or Context), 3. (Rare or Localised), 5. (Outstanding Size), 6. (Aesthetic Value) and 10. (Outstanding Example of Species).



Tree 12: *Eucalyptus globulus ssp globulus*

Location: Ballarat Botanical Gardens
Botanical Name: *Eucalyptus globulus*
Common Name: Tasmanian Blue Gum
Origin: Native/Tasmania and Victoria
Number of trees: 1
Access: Unrestricted
National Trust (Victoria) Tree: Yes
Health: Good
Structure: Good
Estimated Age: 155
Height (m): 33
Spread (m): 31

A very old, dominant and stately tree located on western boundary of the Botanical Gardens and adjacent to the Sensory Garden. It makes an interesting contrast to the rest of the Gardens which contains a vast majority of exotic trees. Baron von Mueller is believed to have planted the seedling. This specimen is an exceptional tree in terms of categories 2. (Location or Context), 4. (Particularly Old), 5. (Outstanding Size), 6. (Aesthetic Value), 8. (Historical Value), 10. (Outstanding Example of Species) and 11. (Outstanding Habitat Value).



Tree 13: *Sequoiadendron giganteum*

Location: Ballarat Botanical gardens

Botanical Name: *Sequoiadendron giganteum*

Common Name: Sierra Redwood

Origin: California (Sierra Nevada), United States

Number of trees: 1

Access: Unrestricted

National Trust (Victoria) Tree: Yes

Health: Good

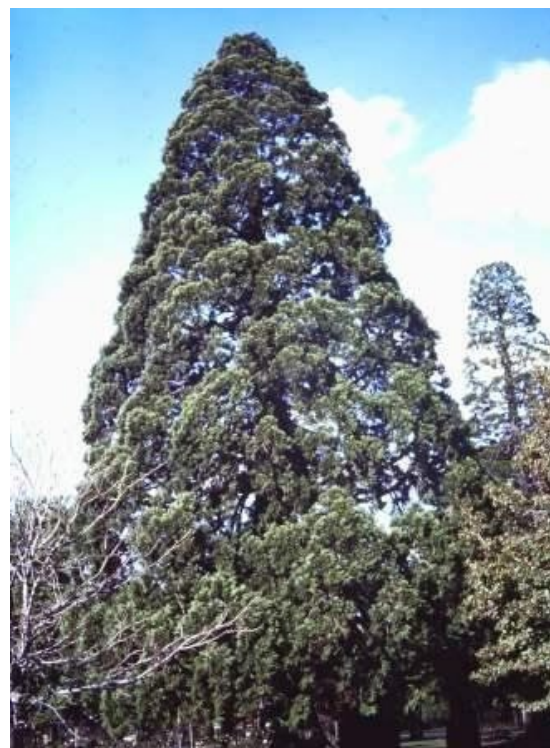
Structure: Good

Estimated Age: 155

Height (m): 30

Spread (m): 14

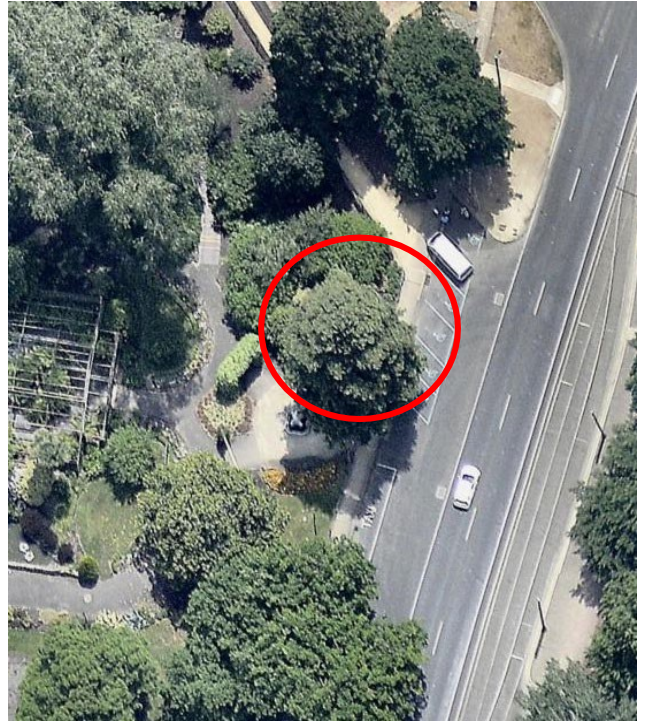
This Sierra Redwood is a beautiful specimen, believed to be about 100-120 years old. *Sequoiadendron giganteum* was a popular tree in the mid-19th century for public spaces noted for its size and longevity. This specimen is an exceptional tree in terms of categories 2. (Location or Context), 4. (Particularly Old), 5. (Outstanding Size), 6. (Aesthetic Value), 8. (Historical Value), 10. (Outstanding Example of Species) and 11. (Outstanding Habitat



Tree 14: *Sequoia sempervirens*

Location: Ballarat Botanical Gardens
Botanical Name: *Sequoia sempervirens*
Common Name: Californian Redwood
Origin: California and Oregon, United States
Number of trees: 1
Access: Unrestricted
National Trust (Victoria) Tree: Yes
Health: Excellent
Structure: Good
Estimated Age: 155
Height (m): 30
Spread (m): 15

A very healthy and impressive specimen of *Sequoia sempervirens* with a very dense canopy. Located adjacent to the Claxton Fountain in front of the Fernery. There are two species of Redwood in the Gardens, both native to northern America but occur in totally different environments. *Sequoia sempervirens* occurs along the coast of California and *Sequoiadendron giganteum* is found inland in the drier areas. This specimen is an exceptional tree in terms of categories 2. (Location or Context), 4. (Particularly Old), 5. (Outstanding Size), 6. (Aesthetic Value), and 10. (Outstanding Example of Species).



Tree 15: *Araucaria bidwillii*

Location: Ballarat Botanical Gardens

Botanical Name: *Araucaria bidwillii*

Common Name: Bunya Bunya Pine

Origin: Queensland

Number of trees: 4

Access: Unrestricted

National Trust (Victoria) Tree: Yes

Condition: Good

Structure: Good

Estimated Age: 120

Height (m): 24

Spread (m): 17

These four Bunya Bunya Pines are situated roughly in pairs. The two near the 'Statue of Spring' are the most handsome, but all are fine specimens. One has a significant lean with a massive trunk. 2011: one specimen on east border had its top removed. These four specimens are exceptional trees in terms of categories 1. (Horticultural value), 2. (Location or Context), 3. (Rare or Localised), 5. (Outstanding Size), 6. (Aesthetic Value) and 10. (Outstanding Example of Species).



Tree 16: *Ulmus glabra* 'Exoniensis'

Location: Ballarat Botanical Gardens

Botanical Name: *Ulmus glabra* 'Exoniensis'

Common Name: Exeter Elm

Origin: England

Number of trees: 1

Access: Unrestricted

National Trust (Victoria) Tree: Yes

Condition: Excellent

Structure: Good

Estimated Age: 115

Height (m): 23

Spread(m): 23

Presumably planted at the turn of the century and arguably the best example of this species in Australia. Located near Adam Lindsay Gordon Cottage. Exeter Elm was discovered near Exeter in England in 1826 and propagated by the Ford nursery in that city. It has upright branches and unlike other elms produces clusters of twisted and folded leaves.

This specimen is an exceptional tree in terms of categories 1. (Horticultural Value), 2. (Location or Context), 3. (Rare or Localised), 4. (Particularly Old), 5. (Outstanding Size), 6. (Aesthetic Value), and 10. (Outstanding Example of Species).



Tree 17: *Acer platanoides*

Location: Buninyong Botanic Gardens

Botanical Name: *Acer platanoides*

Common Name: Red Norway Maple

Origin: Europe/Asia

Number of trees: 1

Access: Unrestricted

National Trust (Victoria) Tree: Yes

Health: Good

Structure: Excellent

Estimated Age: 87

Height (m): 11

Spread (m): 12

A very attractive tree with dark purple foliage. The tree is almost of perfect form and is in excellent condition. This specimen is the best example of this cultivar known in cultivation. *Acer platanoides* is native to eastern and central Europe, and southwest Asia. Located near the 'Gong' in the Upper Garden. This specimen is an exceptional tree in terms of categories 1. (Horticultural Value), 2. (Location or Context), 3. (Rare or Localised), 4. (Particularly Old), 5. (Aesthetic Value), and 10. (Outstanding Example of Species).



Tree 18: *Acer opalus subs. obtusatum*

Location: Buninyong Botanic Gardens Botanical
Name: *Acer opalus subs. obtusatum* Common
Name: Italian maple
Origin: Europe
Number of trees: 2
Access: Unrestricted
National Trust (Victoria) Tree: Yes
Condition: Good
Structure: Good
Estimated Age: 92
Height (m): 12
Spread (m): 12

This is an attractive tree displaying a compact canopy, light green colour, with leaves turning yellow in Autumn. Other known examples occur at Camperdown, Castlemaine and the Royal Botanic Gardens. The leaves are large and the lobes round with the whole under-surface covered in a close down. *Acer opalus* (Italian Maple) is native to the hills and mountains of southern and western Europe. This species is rare in cultivation and are no longer available in the nursery trade. Located near 'The Gong' in the upper garden.

This specimen is an exceptional tree in terms of categories 1. (Horticultural Value), 2. (Location or Context), 3. (Rare or Localised), 4. (Particularly Old), 5. (Aesthetic Value), and 10. (Outstanding Example of Species).



Tree 19: *Abies pinsapo*

Location: Buninyong Botanic Gardens,

Botanical Name: *Abies pinsapo*

Common Name: Spanish Fir

Origin: Spain and Northern Morocco

Number of trees: 1

Access: Unrestricted

National Trust (Victoria) Tree: Yes

Health: Good

Structure: Excellent

Estimated Age: 115

Height (m): 21

Spread (m): 12

A fine example of Spanish Fir uncommon in cultivation. The tree displays perfect form and is a dominant specimen in the Gardens. *Abies pinsapo* is also known as the Spanish Fir as this particular variety is only found in the wild in a small region of mountainous mainland Spain. It is rare and its natural habitat is a protected nature reserve.

This specimen is an exceptional tree in terms of categories 1. (Horticultural value), 2. (Location or Context), 3. (Rare or Localised), 5. (Outstanding Size), 6. (Aesthetic Value), and 10. (Outstanding Example of Species).



Tree 20: *Ulmus parvifolia*

Location: Cnr Learmonth and Warrenheip Streets, Buninyong

Botanical Name: *Ulmus parvifolia*

Common Name: Chinese Elm

Origin: Exotic

Number of trees: 1

Access: Unrestricted

National Trust (Victoria) Tree: Yes

Health: Good

Structure: Excellent

Estimated Age: 95

Height (m): 14

Spread (m): 15

This tree is an unusual form of the species *Ulmus parvifolia*. It retains its bark and does not show the normal characteristics of Chinese Elm which often have attractive peeling bark and a slightly pendulous habit. It is also unlike the Chinese Elm that originated as seedlings from Yarralumba Nursery in Canberra which also retain their bark. This tree is completely deciduous. This specimen is an exceptional tree in terms of categories 1. (Horticultural value), 2. (Location or Context), 3. (Rare or Localised), 5. (Outstanding size), 6. (Aesthetic Value) and 10. (Outstanding Example of Species).



Tree 21: *Halocarpus biformis*

Location: Victoria Park, Plane Avenue, Ballarat

Botanical Name: *Halocarpus biformis*

Common Name: Yellow Pine

Origin: New Zealand

Number of trees: 3

Access: Unrestricted

National Trust (Victoria) Tree: Yes

Health: 2 x Good 1 x Poor

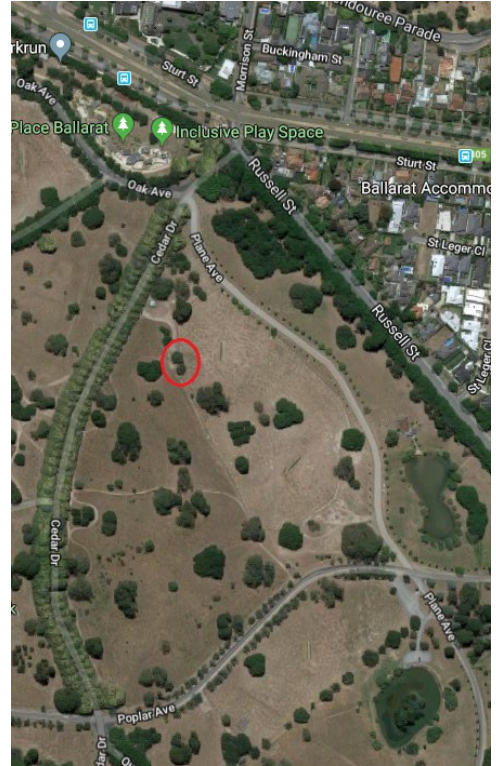
Structure Fair

Estimated Age: 97

Height (m): 18

Spread (m): 7

Three trees that are rare in cultivation. *Halocarpus biformis*, (Yellow Pine) is a coniferous tree native to New Zealand. The tree can attain heights of 10m, but in open areas is usually a low spreading bush. Trees stressed due to compacted soil. These specimens are exceptional trees in terms of categories 1. (Horticultural value), 2. (Location or Context), 3. (Rare or Localised), and 6. (Aesthetic Value).



Tree 22: *Pinus contorta* var. *Contorta*

Location: Victoria Park, junction of Elm and Oak Avenues

Botanical Name: *Pinus contorta* var. *Contorta*

Common Name: Shore Pine

Origin: North America

Number of trees: 1

Access: Unrestricted

National Trust (Victoria) Tree: Yes

Health: Fair

Structure: Fair

Estimated Age: 108

Height (m): 26

Spread (m): 15

This tree is a large specimen located in parkland and were presumably planted at the turn of the century. Another specimen occurs in the Uniting Church grounds, Creswick. Shore Pine is a native of coastal North American and is generally a low spreading or scrubby tree. This specimen is a exceptional tree in terms of categories 1. (Horticultural Value), 2. (Location or Context), 3. (Rare or Localised), 5. (Outstanding Size), 6. (Aesthetic Value) and 10. (Outstanding Example of Species).



Tree 23: *Quercus robur* 'Fastigiata'

Location: Victoria Park, Cedar Avenue, Ballarat

Botanical Name: *Quercus robur* 'Fastigiata'

Common Name: Fastigiated English Oak

Origin: Europe

Number of trees: 12

Access: Unrestricted

National Trust (Victoria) Tree: Yes

Health: Good

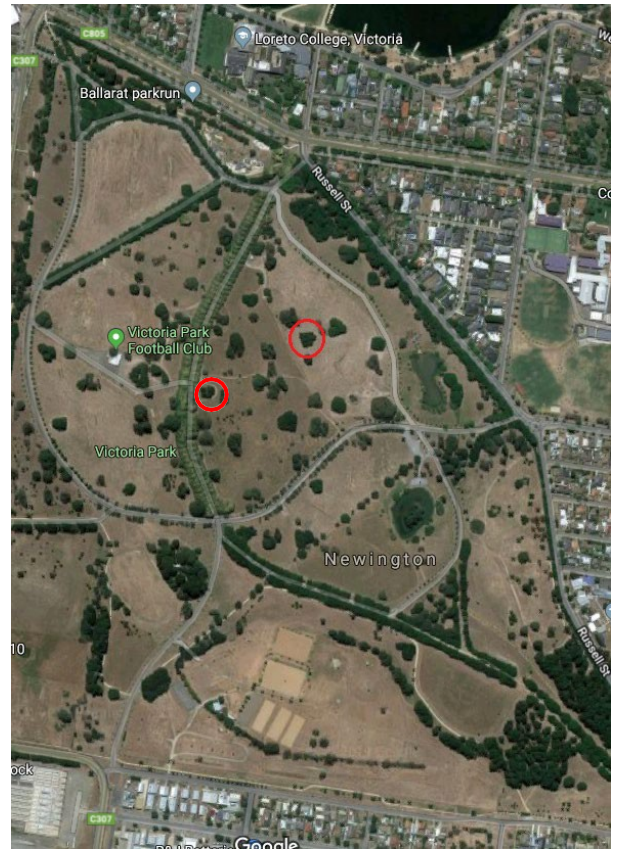
Structure: Good

Estimated Age: 100

Height (m): 17

Spread (m): 11

These 2 stands contain 12 fine specimens of Fastigiated Oaks (*Quercus robur* 'Fastigiata') which are rare in cultivation. They were planted in the early 1900's and are located halfway along Cedar Avenue and between Plane and Cedar Avenues. These specimens are exceptional trees in terms of categories 1. (Horticultural Value), 2. (Location or Context), 3. (Rare or Localised), 6. (Aesthetic Value).



Tree 24: *Sophora japonica* 'Pendula'

Location: Eureka Stockade Reserve, Eureka Street, Eureka

Botanical Name: *Sophora japonica* 'Pendula'

Common Name: Weeping Pagoda Tree

Origin: China

Number of trees: 1

Access: Unrestricted

National Trust (Victoria) Tree: Yes

Health: Poor

Structure: Poor

Estimated Age: 70

Height (m): 5

Spread (m): 4

The tree is the only known mature example of this species in the area. Three others in Ballarat which were on the National Trust Victoria Register have died and been removed. This tree is not associated with the historic events of this site. This specimen is an exceptional tree in terms of categories 1. (Horticultural Value), 2. (Location or Context), and 3. (Rare or Localised).



Tree 25: *Cedrus atlantica* 'Glauca'

Location: Eureka Stockade Reserve, Eureka Street, Eureka

Botanical Name: *Cedrus atlantica* 'Glauca'

Common Name: Blue Atlas Cedar

Origin: Algeria and Morocco

Number of trees: 1

Access: Unrestricted

National Trust (Victoria) Tree: Yes

Health: Good

Structure: Excellent

Estimated Age: 140

Height (m): 21

Spread (m): 25

This very large and old handsome tree, located next to Lake Penhalluriack, makes an important contribution to the site. A group of younger Blue Atlas Cedars are immediately adjacent to this tree. *Cedrus atlantica* is native to the Atlas Mountains of Algeria and Morocco. This specimen is an exceptional tree in terms of categories 2. (Location or Context), 4. (Particularly Old), 5. (Outstanding Size), 6. (Aesthetic Value) and 10. (Outstanding Example of Species).



Tree 26: *Cupressus sempervirens*

Location: Old Shire Offices, 326 High Street, Learmonth

Botanical Name: *Cupressus sempervirens*

Common Name: Italian Cypress

Origin: Exotic

Number of trees: 1

Access: Unrestricted

National Trust (Victoria) Tree: Yes

Health: Good

Structure: Good

Estimated Age: 148

Height (m): 18

Spread (m): 6

This tree, located by the Old Learmonth Shire Hall, is common in cultivation in Victoria and is an outstanding example of the species. It is quite different in shape to the example occurring in Queen Victoria Park, Beechworth. This specimen is an exceptional tree in terms of categories 2. (Location or Context), 4. (Particularly Old), 5. (Outstanding Size), 8. (Historical Value) and 10. (Outstanding Example of Species).



Tree 27: *Ulmus x hollandica*

Location: Eastern Oval, Peel Street North, Ballarat

Botanical Name: *Ulmus x hollandica*

Common Name: Dutch Elm

Origin: Europe

Number of trees: 1

Access: Unrestricted

National Trust (Victoria) Tree: Yes

Health: Good

Structure: Excellent

Estimated Age: 135

Height (m): 31

Spread (m): 30

Dutch elm is a natural hybrid between *Ulmus glabra* (Wych Elm) and *Ulmus minor* (Field Elm) and grows throughout Europe. This Dutch Elm was reputedly planted by legendary cricketer, Dr W. G. Grace, in January 1874 during the tour of the English cricket team. Visiting English cricket teams often played matches at this ground. The Eastern Oval was once ringed with Elms, this being the only one remaining. It is located at the north end of Grandstand. 2. (Location or Context), 4 (Particularly Old), 5. (Outstanding Size), 6. (Aesthetic Value), 8 (Historical Value), and 10. (Outstanding Example of Species).



Tree 28: *Pinus nigra* var. *corsicana*

Location: Scott Parade, Ballarat

Botanical Name: *Pinus nigra* var. *corsicana*

Common Name: Corsican Pine

Origin: Europe and North Africa

Number of trees: 1

Access: Unrestricted

National Trust (Victoria) Tree: Yes

Health: Good

Structure: Good

Estimated Age: 141

Height (m): 25

Spread (m): 20

This Corsican Pine is a remnant of original plantings along this road reserve, originally the main road into Ballarat from Melbourne. It is located in the reserve opposite 119 Scott Parade. The stock or seed is believed to have been supplied by Baron von Mueller and the tree is an outstanding single specimen. This specimen is an exceptional tree in terms of categories 2. (Location or Context), 4. (Particularly Old), 5. (Outstanding Size), 6. (Aesthetic Value) and 10. (Outstanding Example of Species).



Tree 29: *Eucalyptus globulus* subsp. *globulus*

Location: 82 Mair Street East, Bakery Hill
Botanical Name: *Eucalyptus globulus* subsp. *globulus*
Common Name: Tasmanian Blue Gum
Origin: Native
Number of trees: 1
Access: Unrestricted
National Trust (Victoria) Tree: Yes
Health: Good
Structure: Excellent
Estimated Age: 150
Height (m): 38
Spread (m): 32

Situated on the edge of Lakeland Square, the origin of this tree is unknown exactly, and is possibly an original planted with other Tasmanian Blue Gums in Ballarat between 1860 and the 1880s. This specimen is an exceptional tree in terms of categories 2. (Location or Context), 4. (Particularly Old), 5. (Outstanding Size), 6. (Aesthetic Value), 10. (Outstanding Example of Species) and 11. (Outstanding Habitat Value).



The information contained in this report was obtained solely for the purpose of identifying whether a tree should be placed on the City of Ballarat's Exceptional Tree Register. No representations are made as to the accuracy, currency or completeness of any of this information nor its relevance for any other purpose

Tree 30: *Juglans regia*

Location: Tourello Road, Tourello

Botanical Name: *Juglans regia*

Common Name: Walnut

Origin: Europe, Middle East, Asia

Number of trees: 36

Access: Unrestricted

National Trust (Victoria) Tree: Yes

Health: Good (majority)

Structure: Good

Estimated Age: 100

Height (m): average 8

Spread (m): average 11

The Tourello Avenue of Honour was planted in 1918/19 to commemorate soldiers from the Tourello district who served in World War One. There is a total of 36 trees (19 on north side, plus two replacements; 17 on south side and 3 young multi-trunked trees at north-east end). A powerline runs along the north side and the trees were heavily pruned in early 1994. Generally, the trees are in good condition, especially the south side. This is the only known example of walnuts used as an avenue planting in Victoria. 08/2011. These specimens are exceptional trees in terms of categories 2. (Location or Context), 4. (Particularly Old), 6. (Aesthetic Value), 8. (Historical Value), and 12. (Social, Cultural or Spiritual Value).



Tree 31: *Quercus robur* 'Concordia'

Location: 9 Gnarr St, Ballarat

Botanical Name: *Quercus robur* 'Concordia'

Common Name: Golden Oak

Origin: Europe

Number of trees: 1

Access: Restricted Access

Private Tree

National Trust (Victoria) Tree: Yes

Health: Fair

Structure: Good

Estimated Age: 85

Spread (m): 10

Height (m): 8

Once part of a large garden this tree is now a feature in front garden of a residential development. 2011: Some trauma to the tree noted following construction and die-back removed and supplementary watering approved.

This specimen is an exceptional tree in terms of categories 1. (Horticultural Value),

2. (Location or Context), 3. (Rare or Localised), 6. (Aesthetic Value), 7. (Curious Growth Form), and 8. (Historical Value).



Tree 32: *Pinus canariensis*

Location: Synagogue, Barkly Street, Ballarat

Botanical Name: *Pinus canariensis*

Common Name: Canary Island Pine

Origin: Canary Islands

Number of trees: 1

Access: Restricted (Private Tree)

National Trust (Victoria) Tree: Yes

Health: Good

Structure: Excellent

Estimated Age: 150

Height (m): 26

Spread (m): 18

The tree was planted by Jacob Bernstein (an active member of Ballarat's Hebrew community) in 1867 and is now a fine specimen, dominating the front of the building and indeed that intersection. *Pinus canariensis* is a native to the Canary Islands making it highly suited to South-east Australia. It has strongly fissured red bark which contrast with its dark deep-green and soft textured foliage. This specimen is an exceptional tree of categories 1.(Horticultural Value), 2. (Location or Context), 3. (Rare or Localised), 4. (Particularly Old), 5. (Outstanding Size), 6. (Aesthetic Value), 8. (Historical Value), 10. (Outstanding Example of Species) and 12. (Social, Cultural or Spiritual Value).



Tree 33: *Ulmus minor* 'Variegata'

Location: Australian Catholic University, 1200 Mair Street, Ballarat

Botanical Name: *Ulmus minor* 'Variegata'

Common Name: Variegated Elm

Origin: Exotic

Number of trees: 1

Access: Unrestricted

National Trust (Victoria) Tree: Yes

Health: Good

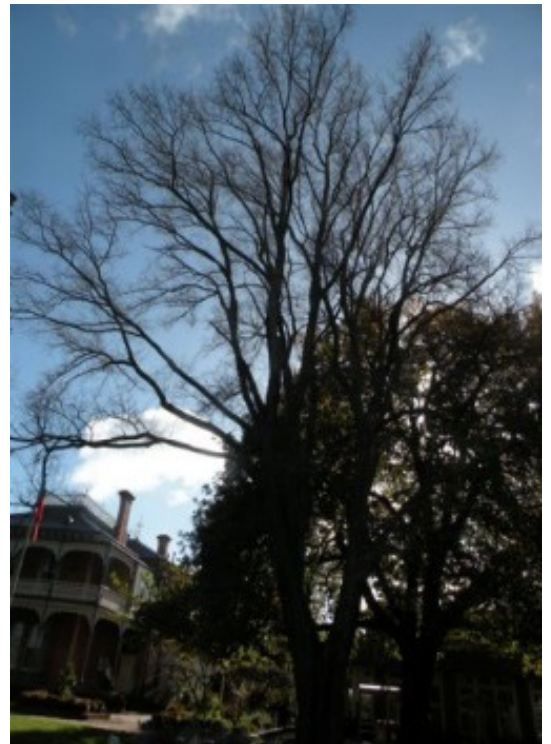
Structure: Good

Estimated Age: 128

Height (m): 25

Spread (m): 20

This Variegated Elm is a large, upright form of the species dominating the landscape. Mr Retallack purchased 3 acres in 1881 and built the large mansion (now called Manifold House) set in the historic gardens of Carn Brea. In 1909 the Ballarat East Sisters of Mercy established the Aquinas Training College. The site is now the Ballarat Campus of the Australian Catholic University (Aquinas). This specimen is an exceptional tree in terms of categories 1. (Horticultural Value), 2. (Location or Context), 3. (Rare or Localised), 4. (Particularly Old), 5. (Outstanding Size), 6. (Aesthetic Value), 8. (Historical Value), and 12. (Social, Cultural or Spiritual Value).



Tree 34: *Quercus robur*

Location: Australian Catholic University, 1200 Mair Street, Ballarat

Botanical Name: *Quercus robur*

Common Name: English Oak

Origin: Europe

Number of trees: 1

Access: Unrestricted

National Trust (Victoria) Tree: Yes

Health: Good

Structure: Excellent

Estimated Age: 127

Height (m): 23

Spread (m): 24

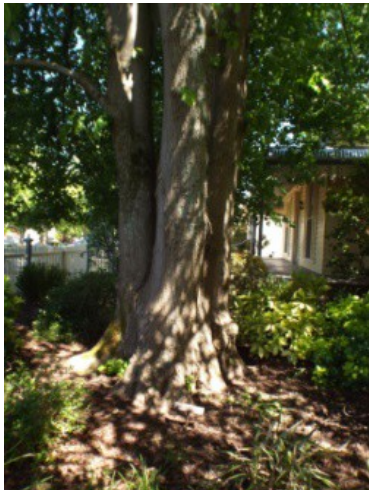
This English Oak is a prominent and attractive tree in the landscape. *Quercus robur* is one of the most common park trees in south-eastern Australia and is noted for its vigorous, luxuriant growth. It is native to most of Europe, and to Anatolia to the Caucasus, and also to parts of North Africa. Mr Retallack purchased 3 acres in 1881 and built the large mansion (now called Manifold House) set in the historic gardens of Carn Brea. In 1909 the Ballarat East Sisters of Mercy established the Aquinas Training College. The site is now the Ballarat Campus of the Australian Catholic University (Aquinas). This specimen is an exceptional tree in terms of categories 1.(Horticultural Value), 2. (Location or Context), 4. (Particularly Old), 5. (Outstanding Size), 6. (Aesthetic Value), 8. (Historical Value), 10. (Outstanding Example of Species), and 12. (Social, Cultural or Spiritual Value).



Tree 35: *Tilia x europaea*

Location: 1200 Mair Street ,Ballarat
Botanical Name: *Tilia x europaea*
Common Name: Common Lime Origin: Exotic
Origin: Europe
Number of trees: 1
Access: Unrestricted
National Trust (Victoria) Tree: Yes
Health: Good
Structure: Good
Estimated Age: 80
Height (m): 15
Spread (m): 18

This tree is significant as it is a mature example of the species with large physical dimensions in comparison to other trees of the same species under cultivation in Victoria. The tree is currently in good health and has a major presence within the landscape of Australian Catholic University's Mair Street campus. Large and mature *Tilia x europaea* are seldom seen under cultivation in Victoria as a result of its sensitivities to exposure, heat and extended periods of soil aridity, all of which are prevalent in many areas of Victoria, especially over the warmer months. The tree is also one component of the historic Carn Brea Mansion and Gardens that was built in 1881. A number of trees from this era are still on the property, two which have previously been included on the National Trust Register of Significant Trees. This specimen is an exceptional tree in terms of categories 2. (Location or Context), 5. (Outstanding Size), 6. (Aesthetic Value), 8. (Historical Value), and 12. (Social, Cultural or Spiritual Value).



Tree 36: *Quercus canariensis*

Location: 507 Herriot Street, Buninyong, Ballarat

Botanical Name: *Quercus canariensis*

Common Name: Algerian Oak

Origin: Southern Europe and Northern Africa

Number of trees: 1

Access: Restricted Access Private Tree

National Trust (Victoria) Tree: Yes

Health: Good

Structure: Excellent

Estimated Age: 120

Height (m): 20

Spread (m): 31

This is a very large and impressive example of this species and completely dominates the surrounding landscape. It is considered significant due to its sheer physical size and biomass volume and for the high level of amenity it provides by way of shade and privacy. This species is naturally very long lived and therefore this tree has the potential to remain in the landscape for many more decades. This specimen is an exceptional tree in terms of categories 2. (Location or Context), 4. (Particularly Old), 6. (Aesthetic Value), 8. (Historical Value) and 10. (Outstanding Example of Species),



Tree 37: *Ulmus glabra* 'Camperdownii'

Location: 315 Eureka Street, Ballarat East

Botanical Name: *Ulmus glabra* 'Camperdownii'

Common Name: Weeping Scotch Elm

Origin: Scotland

Number of trees: 2

Access: Restricted

Access Private Tree

National Trust (Victoria) Tree: Yes

Health: Good (both trees)

Structure: Good (both trees)

Estimated Age: 120

Height (m): 13-15

Spread (m): 12-15

A pair of trees in the front garden which are significant due to their large physical dimensions, maturity and good form. Due to their estimated age and physical size the trees make a significant impact upon the Eureka Street landscape and provide the immediate area with a great sense of scale. These specimens are exceptional trees in terms of categories 1. (Horticultural Value), 2. (Location or Context), 3. (Rare or Localised), 4. (Particularly Old), 5. (Outstanding Size), 6. (Aesthetic Value), 7. (Curious Growth Form), 8. (Historical Value) and 10. (Outstanding



Tree 38: *Eucalyptus radiata*

Location: Private property, Gracefield Road, Gong Gong

Botanical Name: *Eucalyptus radiata*

Common Name: Narrow leafed Peppermint

Origin: Victoria and New South Wales

Number of trees: 1

Access: Restricted Access Private Tree

National Trust (Victoria) Tree: Yes

Health: Good

Structure: Fair

Estimated Age: 90

Height (m): 15

Spread (m): 18

This is a very attractive remnant example of the Narrow-Leafed Peppermint. In Victoria, *Eucalyptus radiata* is a common forest tree and ranges north of the Great Dividing Range, from the mountains at the border with New South Wales to Wombat State Forest, the Otway Range and as far as South Gippsland. This specimen is an exceptional tree in terms of categories 1. (Horticultural Value), 2. (Location or Context), 3. (Rare or Localised), 4. (Particularly Old), 5. (Outstanding Size), 6. (Aesthetic Value), 9. (Aboriginal Association) and 11. (Outstanding Habitat Value).



Tree 39: *Quercus palustris*

Location: 1508 Sturt Street, Ballarat

Botanical Name: *Quercus palustris*

Common Name: Pin Oak

Origin: United States and Canada

Number of trees: 1

Access: Restricted Access Private Tree

National Trust (Victoria) Tree: Yes

Health: Good

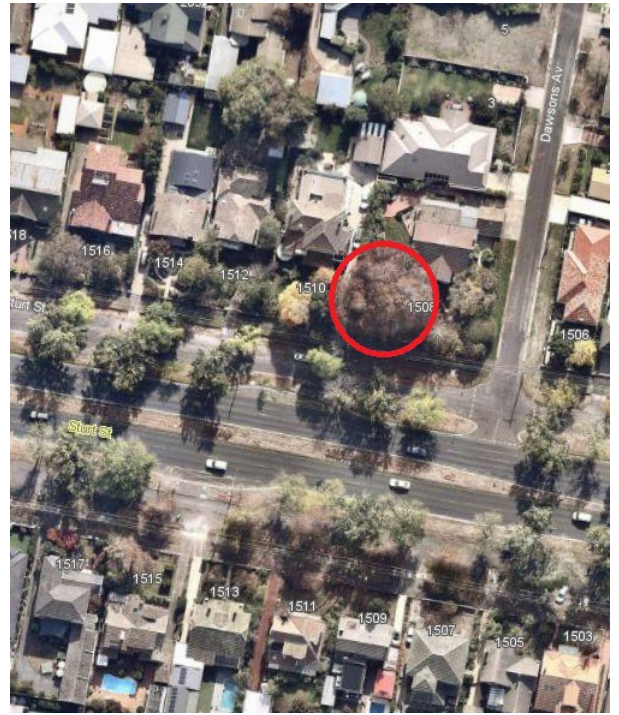
Structure: Good

Estimated Age: 92

Height (m): 24

Spread (m): 25

This *Quercus palustris* (Pin Oak) is believed to have been planted in the early 1920s at the time of the house's construction. It has a significant impact upon the quality of the surrounding landscape and contributes to the tree canopy of Sturt Street. The form of the tree is not completely ideal due to its co-dominant habit that begins close to the base; however this has not impacted the tree's structural integrity. The tree is healthy and displays full and dense canopy. It has historically received periodic pruning and was irrigated during the drought of the late 1990s and early 2000s. Due to its location, its current health and structural condition, and the current owner's enthusiasm for care of the tree, this Pin Oak has sound prospects for longevity. This specimen is an exceptional tree in terms of categories 2. (Location or Context), 3. (Rare or Localised), 4. (Particularly Old), 5. (Outstanding Size), 6. (Aesthetic Value), and 8. (Historical Value).



Tree 40: *Abies pinsapo*

Location: Ballarat Secondary College, Barkly Street, Ballarat

Botanical Name: *Abies pinsapo*

Common Name: Spanish Fir

Origin: Spain and Morocco

Number of trees: 2

Access: Unrestricted

National Trust (Victoria) Tree: Yes

Health: Fair

Structure: Good

Estimated Age: 110

Height (m): T1 28

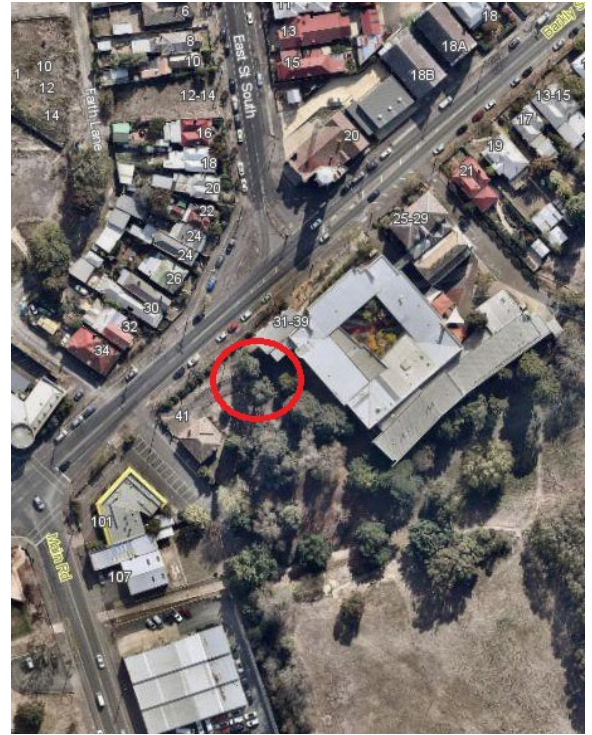
: T2 25

Spread (m): T1 12

: T2 12

These trees are two commemorative plantings growing either side of the stone steps next to the former Ballarat East Town Hall (demolished). Tree one the left tree has a cable installed in the top canopy holding together the co-dominant structure. Tree two has the poorer structure of the two trees. The trees were planted in 1901 by the Duke and Duchess of Cornwall and York. *Abies pinsapo* is a species of Fir native to southern Spain and northern Morocco.

Located on an embankment south-east of the Library Building. These specimens are exceptional tree in terms of categories 1. (Horticultural Value), 2. (Location or Context), 3. (Rare or Localised), 4. (Particularly Old), 5. (Outstanding Size), 6. (Aesthetic Value), 8. (Historical Value), and 12. (Social, Cultural or Spiritual Value).



Tree 41: *Ulmus x hollandica*

Location: 134 Gillies Rd Mount Rowan, Ballarat

Botanical Name: *Ulmus x hollandica*

Common Name: Dutch Elm

Origin: Europe

Number of trees: 1

Access: Restricted Access

Private Tree

National Trust (Victoria) Tree: Yes

Health: Good

Structure: Excellent

Estimated Age: 98

Height (m): 27

Spread (m): 25

The tree makes a striking feature on this rural property and can be seen for some distance around the area. It makes an important contribution to the rural landscape. Edward Williamson purchased this crown grant at auction in Ballarat on 21st September 1854 and it remained in this family until approximately 1921. This specimen is an exceptional tree in terms of categories 4. (Particularly Old), 5. (Outstanding Size), 6. (Aesthetic Value), 8. (Historical Value) and 10. (Outstanding Example of Species).



Tree 42: *Quercus suber*

Location: Ligar Street, Ballarat

Botanical Name: *Quercus suber*

Common Name: Cork Oak

Origin: Southwest Europe and Northwest Africa

Number of trees: 1

Access: Unrestricted

National Trust (Victoria) Tree: Yes

Health: Good

Structure: Fair

Estimated Age: 100

Height (m):

Spread (m):

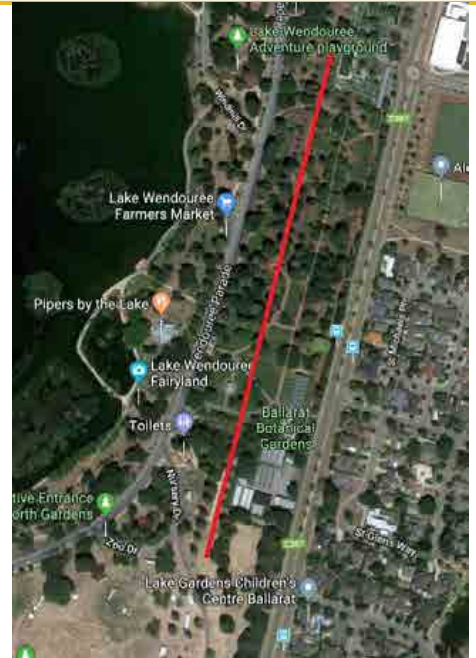
This Cork Oak is a fine old specimen, one of the few in the area. Growing in an extremely inhospitable site, trunk bark has quite a lot of damage and neighbours have reported cork being cut. As the name suggests the bark is used for cork stoppers and other uses. 1. (Horticultural Value), 3. (Rare or Localised), 4. (Particularly Old), 5. (Outstanding Size), and 6. (Aesthetic Value).



Tree 43: *Sequoiadendron giganteum*

Location: Ballarat Botanical Gardens
Botanical Name: *Sequoiadendron giganteum*
Common Name: Sierra Redwood
Origin: California, USA
Number of trees: 31
Access: Unrestricted
National Trust (Victoria) Tree: yes
Health: Fair
Structure: Fair
Estimated Age: 145+
Height (m): 25-30
Spread (m): 17

This avenue of *Sequoiadendron* trees runs north-south through the Botanical Gardens. These trees were planted around 1872 as part of the original plantings in the gardens and is an important part of the Botanical Gardens. Originally a complete avenue of mature trees 19 trees have been removed due to a combination of drought, Canker and other reasons killing the trees. The remaining trees are in poor health and condition. Replacement trees have been planted. These specimens are exceptional trees in terms of categories 1. (Horticultural Value), 2. (Location or Context), 4. (Particularly Old), 5. (Outstanding Size), 6. (Aesthetic Value), 8. (Historical Value) and 12. (Social, Cultural or Spiritual Value).



Tree 44: *Eucalyptus globulus* subsp. *globulus*

Location: Federation University, Gear Avenue, Mt. Helen

Botanical Name: *Eucalyptus globulus* subsp. *globulus*

Common Name: Tasmanian Blue Gum

Origin: Victoria and Tasmania

Number of trees: 1

Access: Unrestricted

National Trust (Victoria) Tree: Yes

Health: Good

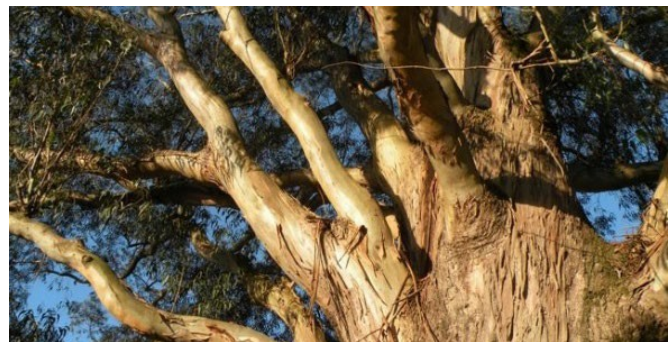
Structure: Good

Estimated Age: 125

Spread (m): 40

Height (m): 40

Known as "The Big Tree", located in the main Quadrangle, this is a beautiful and majestic old tree of unusual morphology, i.e. twin trunks fused together. It was planted as a seedling on Arbor Day, 23 May 1896, by Mrs Elizabeth Downing, who lived on what was then a farm and where she raised her large family. *E. globulus* mainly occurs as a forest tree in south-east Tasmania, in the Otway's and at Wilsons Promontory. It was widely planted in the nineteenth century as a street tree, windbreak and in many historic parks and gardens, including Sturt Street, Ballarat. This specimen is an exceptional tree in terms of categories 1. (Horticultural Value), 2. (Location or Context), 3. (Rare or Localised), 4. (Particularly Old), 5. (Outstanding Size), 6. (Aesthetic Value), 8. (Historical Value), 10. (Outstanding Example of Species), 11. (Outstanding Habitat Value), and 12. (Social, Cultural or Spiritual Value).



Tree 45: *Quercus canariensis*

Location: Kirks Reservoir Gardens, Daylesford Road, Brown Hill

Botanical Name: *Quercus canariensis*

Common Name: Algerian Oak

Origin: Spain, Portugal, Tunisia, Algeria and Morocco

Number of trees: 1

Access: Daytime hours unrestricted

National Trust (Victoria) Tree: No

Health: Excellent

Structure: Good

Estimated Age: 120

Height (m): 26

Spread (m): 26

A very large specimen tree set amongst the historic exotic landscape of Kirks Reservoir. This specimen is an exceptional tree in terms of categories 1, (Horticultural Value), 4 (Particularly Old), 5 (Outstanding Size), 6 (Aesthetic Value) and 10 (Outstanding Example of the Species).



Tree 46: *Quercus nigra*

Location: Kirks Reservoir Gardens, Daylesford Road, Brown Hill

Botanical Name: *Quercus nigra*

Common Name: Water Oak

Origin: United States

Number of trees: 1

Access: Daytime hours unrestricted

National Trust (Victoria) Tree: No

Health: Excellent

Structure: Fair

Estimated Age: 80

Height (m): 16

Spread (m): 20

A very unusual specimen tree set amongst the historic exotic landscape of Kirks Reservoir. The Water Oak is a medium sized deciduous tree and is used for timber and fuel during the 17th century in America. This specimen is an exceptional tree in terms of categories 3, (Rare or Localised), 4 (Particularly Old), 5 (Outstanding Size) and 6 (Aesthetic Value).



Tree 47: *Eucalyptus aromaphloia*

Location: 9 Haymes Road, Mt Clear

Botanical Name: *Eucalyptus aromaphloia*

Common Name: Scent Bark

Origin: Native/Indigenous

Number of trees: 1

Access: Restricted Access Private

Tree

National Trust (Victoria) Tree: No

Health: Good

Structure: Fair

Estimated Age: 100+

Height (m): 25

Spread (m): 15

A very old, possibly remnant, and tall indigenous tree set amongst scattered indigenous eucalypts within a private property. Contains numerous hollows throughout the canopy. This specimen is an exceptional tree in terms of categories 4 (Particularly Old), 5 (Outstanding Size) and 11 (Outstanding Habitat Value).



Tree 48: *Cedrus atlantica* 'Glauca'

Location: Coghills Creek Road, Coghills Creek

Botanical Name: *Cedrus atlantica* 'Glauca'

Common Name: Blue Atlas Cedar

Origin: Morocco and Algeria

Number of trees: 1

Access: Unrestricted (Public Hall)

National Trust (Victoria) Tree: No

Health: Good

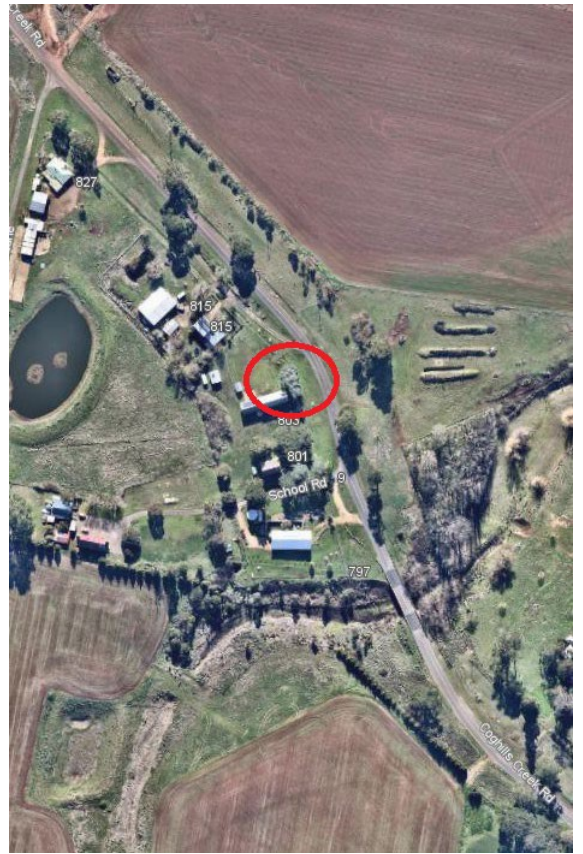
Structure: Excellent

Estimated Age: 120

Height (m): 25

Spread (m): 18

A very old and tall tree set in front of an historic community hall. The Blue Cedar is a cultivar of the Atlas Cedar and is common in cultivation. Used as a street tree and garden tree because of its tolerance to hot and dry conditions than most conifers. This specimen is an exceptional tree in terms of categories 2 (Location or Context), 4 (Particularly Old), 5 (Outstanding Size) and 8, (Historic Value).



Tree 49: *Populus tremula*

Location: Airport Road, Mitchell Park

Botanical Name: *Populus tremula*

Common Name: Aspen

Origin: Europe and Asia

No of Trees: 53

Access: Unrestricted

National Trust (Victoria) Trees: No

Health: Excellent

Structure: Good to Excellent

Estimated Age: 85

Hight (m): 15-25

Spread (m): 22

These trees were planted around World War 2 as the Airport was expanded for wartime service. Rarely seen species in Victoria this is a particularly valuable stand of trees. Aspens are native to cool temperate regions of Europe and Asia. A deciduous tree growing to around 30 meters tall this avenue of trees has historic and aesthetic value. They are an important part of the landscape and the overall airport location. These trees are exceptional trees in terms of categories: 1. Horticultural Value, 2. Location, 4. Aesthetic, 10. Outstanding Example of Species.



Tree 50: *Aesculus hippocastanum*

Location: 44 Webster Street, Ballarat Central

Botanical Name: *Aesculus hippocastanum*

Common Name: Horse Chestnut

Origin: South Eastern Europe

No of Trees: 1

Access: Restricted Access Private Tree

National Trust (Victoria) Trees: No

Health: Excellent

Structure: Good

Estimated Age: 100+

Height (m): 19

Spread (m): 22

Located in a back yard along Webster Street this large tree would not be so visible from the street. But when you are standing next to it is an impressive specimen. This chestnut is quite possible the largest in Ballarat. Horse Chestnuts are a widely used ornamental tree used as street tree plantings and in parks. Native to South East Europe these trees can grow to around 30 metres tall. This specimen is an exceptional tree in terms of categories 1. (Horticultural Value), 4. (Particularly Old), 5. (Outstanding Size), 10. (Outstanding Example of Species).



Tree 51: *Cedrus atlantica*

Location: 212 Morton Street, Mt Pleasant Botanical
Name: *Cedrus atlantica* 'Glauca' Common Name:
Blue Atlas Cedar
Origin: North Africa No
of Trees: 7 Access:
Restricted Access
Private Tree
National Trust (Victoria) Trees: No
Health: Very Good
Structure: Good
Estimated Age: 100+
Height (m): 20-25
Spread (m): 20



The Blue Atlas Cedar is native to the Atlas Mountains of Morocco and to the Tell Atlas in Algeria (North Africa). Not a common tree planted in Victoria and there are few in Ballarat. Evergreen large coniferous tree growing to approximately 30 metres. A tree that can grow in dry and hot conditions and had been planted in plantations for timber production. Planted in 1917 on the grounds of the former Wesleyan Chapel and school that serviced the Mount Pleasant community. These trees were planted to commemorate the service and sacrifice of local residents in WW1. These specimens are exceptional trees in terms of categories 1. (Horticultural Value), 2. (Location or Context), 4. (Particularly Old), 6. (Aesthetic Value), 8. (Historical Value) and 12. (Social, Cultural or Spiritual Value).



Tree 52: *Butia capitata*

Location: 24A Anderson Street, Ballarat

Botanical Name: *Butia capitata*

Common Name: Butia Palm/Jelly Palm

Origin: Brazil

No of Trees: 1

Access: Restricted Access Private Tree

National Trust (Victoria) Trees: No

Health: Excellent

Structure: Excellent

Estimated Age: 40+

Height (m): 8

Spread (m): 6

Butia Palm located at 24A Anderson Street is the only palm of this species in Ballarat that we know of. A stout palm native to Brazil grows to 12 metres with feather palm pinnate leaves and a blue sheen. The fruit can be used for juice, liquor, marmalades and ice-cream. This specimen is an exceptional tree in terms of categories 1. (Horticultural Value), 3. (Rare or Localised) and 6. (Aesthetic Value),



Tree 53: *Eucalyptus aromaphloia*

Location: 3 Aquilla Court, Ballarat North

Botanical Name: *Eucalyptus aromaphloia*

Common Name: Scent Bark

Origin: Indigenous/native

No of Trees: 1

Access: Restricted Access Private Tree

National Trust (Victoria) Trees: No

Health: Fair

Structure: Good

Estimated Age: 100+

Height (m): 35

Spread (m): 22

Rare remnant Scent Bark in an urban location surrounded by houses, fences, shed and people. This is a large tall tree that has lasted through years of development.

Eucalyptus aromaphloia is an indigenous tree found in central Victoria including around Ballarat and favours flat or slightly undulating areas of open forest. Not many remnant trees like this still exists in an urban setting. This tree has been pruned in the past for safety reasons and this has resulted in poor pruning cuts and lopped cuts. The tree also has large amounts of dead wood and exhibits some poor branch unions. This specimen is an exceptional tree in terms of categories 2. (Location or Context), 4. (Particularly Old), 5. (Outstanding Size), and 11. (Outstanding Habitat Value).



Tree 54: *Agonis flexuosa*

Location: Old Shire Offices, 326 High Street, Learmonth

Botanical Name: *Agonis flexuosa*

Common Name: Willow Myrtle

Origin: Native/Western Australia

No of Trees: 1

Access: Unrestricted

National Trust (Victoria) Trees: No

Health: Good

Structure: Good

Estimated Age: 130+

Height (m): 14

Spread (m): 18

This tree is believed to be planted sometime during the 1870s with a photo taken showing it in 1909 with the tree already around 20-30 years old. *Agonis flexuosa* is a native to southwest Western Australia and is commonly planted through Perth as a street tree and park tree. Small white clustered flowers it is an attractive tree. This tree has two cables holding it together. Rare historic species as there is not many *Agonis* growing in Ballarat. This specimen is an exceptional tree in terms of categories 1. (Horticultural Value), 2. (Location or Context), 4. (Particularly Old), 5. (Outstanding Size), 6. (Aesthetic Value), 8. (Historical Value), 10. (Outstanding Example of Species), and 12. (Social, Cultural or Spiritual Value).



Tree 55: *Eucalyptus viminalis* ssp *viminalis*

Location: White Swan Road, Glen Park

Botanical Name: *Eucalyptus viminalis* ssp *viminalis*

Common Name: Manna Gum

Origin: Indigenous/Native

No of Trees: 1

Access: Unrestricted State Forest

National Trust (Victoria) Trees: No

Health: Good

Structure: Good

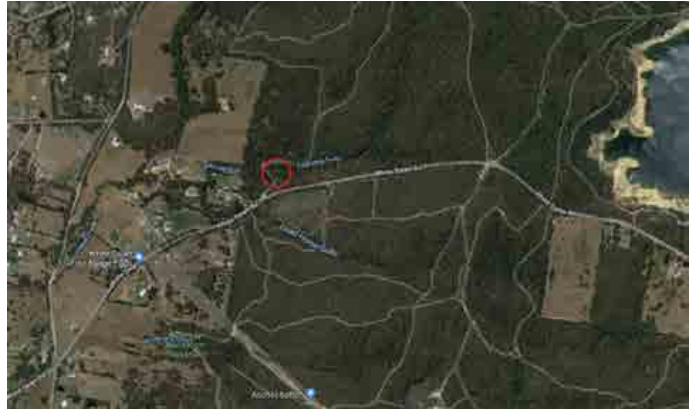
Estimated Age: 150+

Height (m): 30

Spread (m): 30

Large Manna Gum on the edge of the Creswick State Forest this remnant tree is an impressive specimen.

Eucalyptus viminalis is an important Koala food tree along with *Eucalyptus ovata*, and *Eucalyptus radiata* in the region. Endemic to NSW, VIC and SA a large tree that can grow to 40 meters tall and is often used as a fine wood to make furniture and the like. This tree exhibits some die back and epicormic growth that is signs of stress but overall the tree is healthy. This specimen is an exceptional tree in terms of categories 4. (Particularly Old), 9. (Aboriginal Association), 10. (Outstanding example of species), 11.



Tree 56: *Cedrus deodara*

Location: Old Shire Offices, 326 High Street, Learmonth

Botanical Name: *Cedrus deodara*

Common Name: Himalayan Cedar/Deodar Cedar

Origin: Asia (Himalayan Mountains)

No of Trees: 1

Access: Unrestricted

National Trust (Victoria) Trees: No

Health: Excellent

Structure: Good

Estimated Age: 140+

Height (m): 30

Spread (m): 24

Bifurcated branch union 8 metres from the ground. This tree has poor pruning cuts and heavy loss of branches in the past.

Considering this it is an impressive specimen and a prominent visual appearance in the streetscape. Native to Western Himalayan Mountains (Afghanistan, Pakistan and India). A large evergreen coniferous tree growing to approximately 40 metres considered a divine tree among the Hindu faith. Believed to be planted by James Richmond a former Shire of Ballarat Shire Secretary during the 1870s. This specimen is an exceptional tree in terms of categories 1. (Horticultural Value), 2. (Location or Context), 4. (Particularly Old), 5. (Outstanding Size), 6. (Aesthetic Value), 8. (Historical Value) and 12. (Social, Cultural or Spiritual Value).



Tree 57: *Quercus robur*

Location: 61 Lofven Street, Nerrina

Botanical Name: *Quercus robur*

Common Name: English Oak

Origin: Europe

No of Trees: 1

Access: Restricted Access Private Tree

National Trust (Victoria) Trees: No

Health: Good

Structure: Good

Estimated Age: 100+

Height (m): 22

Spread (m): 27

Another impressive *Quercus robur* (English Oak) this is a particularly large oak with good structure and form. Resident stated that this tree nearly died 18 years ago and with advice from an arborist they nurtured the tree back to health. This tree is a prominent feature in the street scape. This specimen is an exceptional tree in terms of categories 2. (Location or Context), 4. (Particularly Old), 5. (Outstanding size), 6. (Aesthetic Value)



Tree 58: *Sequoia sempervirens*

Location: 1335 Gregory Street, Lake Wendouree

Botanical Name: *Sequoia sempervirens*

Common Name: California Redwood

Origin: California and Oregon, USA

No of Trees: 1

Access: Restricted Access Private Tree

National Trust (Victoria) Trees: No

Health: Excellent

Structure: Excellent

Estimated Age: 100+

Height (m): 25

Spread (m): 14

This is a large Redwood hidden from the public eye in a back yard but clearly visible from the street. A healthy tree in good condition that seems to be untouched by the drought that affected the Botanical Gardens Redwoods. Californian Redwoods are native to central California to Southern Oregon and are some of the oldest living organisms on earth. Are highly prized for the red timber for many timber products, the tallest tree in the wild is 155 metres with a DBH of 4.9 metres. This specimen is an exceptional tree in terms of categories 1. (Horticultural Value), 4. (Particularly Old) and 5. (Outstanding Size).



Tree 59: *Cedrus deodara*

Location: 526 Bond Street, Mt Pleasant

Botanical Name: *Cedrus deodara*

Common Name: Himalayan Cedar/Deodar Cedar

Origin: Asia

No of Trees: 1

Access: Restricted Access Private

Tree

National Trust (Victoria) Trees: No

Health: Fair

Structure: Good

Estimated Age: 130+

Height (m): 17

Spread (m): 20

Large private tree in good condition this tree is a good specimen of the species. The house was built in 1883 and the tree planted soon after. Native to Western Himalayan Mountains (Afghanistan, Pakistan and India). A large evergreen coniferous tree growing to approximately 40 metres considered a divine tree among the Hindu faith. The timber is in great demand for building materials and furniture production. This specimen is an exceptional tree in terms of categories 2. (Location or Context), 4. (Particularly Old), 6. (Aesthetic Value) and 8. (Historical Value).



Tree 60: *Quercus robur*

Location: Corner of Fussell and Victoria Street, Ballarat East

Botanical Name: *Quercus robur*

Common Name: English Oak

Origin: Europe

No of Trees: 21

Access: Restricted

National Trust (Victoria) Trees: No

Health: Excellent

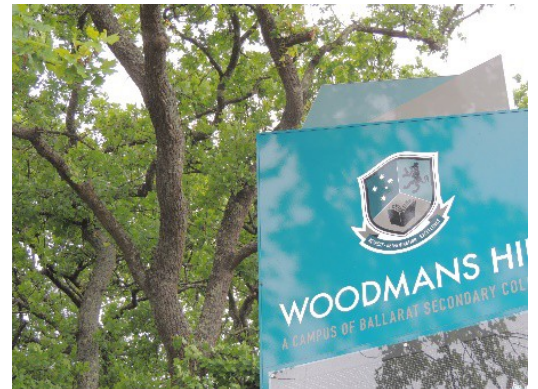
Structure: Generally good to excellent

Estimated Age: 80-100+

Height (m): 15-25

Spread (m): 20

An important avenue of trees as you enter Ballarat this group of trees is an impressive collection that has stood the test of time. *Quercus robur* is a native tree to Europe but widely planted as a street tree and park tree everywhere. These trees are approximately 80-100 years old on the site that is now Woodman's Hill Secondary College. The 21 trees all have good structure and are very healthy. English Oaks grow well in the Ballarat climate and these trees are evidence of this. This site has been a Secondary/High school since 1945. These specimens are exceptional trees in terms of categories 2. (Location or Context), 6. (Aesthetic Value), 8. (Historical Value) and 12. (Social, Cultural or Spiritual Value).



Tree 61: *Quercus robur*

Location: 907 Talbot Street South, Redan

Botanical Name: *Quercus robur*

Common Name: English Oak

Origin: Europe

No of Trees: 1

Access: Restricted Access Private Tree

National Trust (Victoria) Trees: No

Health: Good

Structure: Fair

Estimated Age: 100+

Height (m): 40

Spread (m): 22

A large Oak in the back yard of a residential area. There are not many trees this big in Redan. The tree was cut for property clearance during a sub-division of the area some years ago reducing the canopy of the tree. A native to Europe this is a fine specimen of *Quercus robur*. In Europe the timber is commonly used for construction and furniture. Before housing development, the land was owned by Band of Hope & Albion Consols Gold Mining Co and it is believed that the tree was planted by them at some time. This specimen is an exceptional tree in terms of categories 2. (Location or Context), 4. (Particularly Old), 8. (Historical Value) and 10. (Outstanding Example of Species).



Tree 62: *Corymbia ficifolia*

Location: 527 Skipton Street Redan Uniting Church, Redan

Botanical Name: *Corymbia ficifolia*

Common Name: Western Australian Flowering Gum

Origin: Native/ Western Australia

No of Trees: 1

Access: Unrestricted (front yard of the church)

National Trust (Victoria) Trees: No

Health: Excellent

Structure: Good

Estimated Age: 100+

Height (m): 12

Spread (m): 15

Corymbia ficifolia is a small native tree indigenous to a small area of south coastal Western Australia measured on only tens on square kilometres. Changed from *Eucalyptus ficifolia* to *Corymbia ficifolia* in 1995 it is widely planted as an ornamental tree. This specimen has good structure and is in excellent health. The church was constructed during 1862 and the gardens soon after. This tree has historical importance. This specimen is an exceptional tree in terms of categories 1. (Horticultural Value), 2. (Location or Context), 4. (Particularly Old), 6. (Aesthetic Value), 8. (Historical Value), and 12. (Social, Cultural or Spiritual Value).



Tree 63: *Ulmus glabra* 'Camperdownii'

Location: 336 & 340 Wendouree Parade, Lake Wendouree

Botanical Name: *Ulmus glabra* 'Camperdownii'

Common Name: Camperdown Elm

Origin: Dundee/Scotland

No of Trees: 4

Access: Restricted Access Private Tree/s

Health: Good (all four trees are in good health)

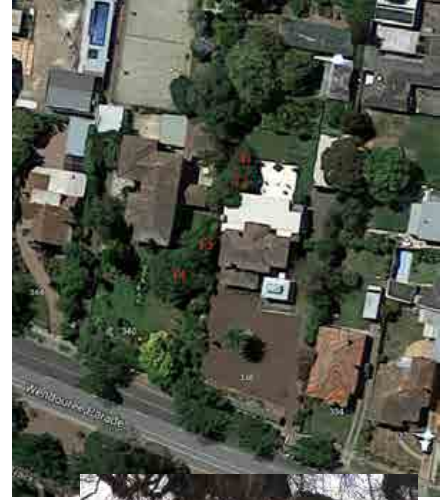
Structure: Good (considering the contorted form of this species)

Estimated Age: 100+

Height (m) Tree1: 12 Tree2: 15 Tree3: 15 Tree4: 14

Spread (m) Tree1: 9 Tree2: 12 Tree3: 9 Tree4: 10

The first *Ulmus glabra* 'Camperdownii' was discovered in the forest at Camperdown House in Dundee Scotland and soon became commercially available around the world. The original tree found is still growing in the gardens of Camperdown House. These four trees were planted around 100 years ago and were part of the gardens of the Greenfield Family. The Greenfield family operated a nursery at the property with a Gregory Street frontage. Four great trees all featuring the unusual contorted shapes of the branches typical of this species. These specimens are exceptional trees in terms of categories 1.(Horticultural Value), 4. (Particularly Old), 6. (Aesthetic Value), 7. (Curious Growth Form) and 8. (Historical Value).



Tree 64: *Ulmus minor* 'Variegata'

Location: 10 McPhie Place, Lake Gardens

Botanical Name: *Ulmus minor* 'Variegata'

Common Name: Silver Elm

Origin: Europe

No of Trees: 1

Access: Restricted Access Private Tree

National Trust (Victoria) Tree: No

Health: Good

Structure: Poor

Estimated Age: 100+

Height (m): 23

Spread (m): 17

A variegated cultivar of *Ulmus minor* it is native to Europe (France and England). These elms can grow up to 40 meters tall. There is a sling system holding this tree together and it has lost a large limb in the past. A large specimen this would have been part of the extensive Lakeside Hospital gardens on this site before subdivision. This specimen is an exceptional tree in terms of categories 1. (Horticultural Value), 4. (Particularly Old), 5. (Outstanding Size), 6. (Aesthetic Value), 8. (Historical Value), and 12. (Social, Cultural or Spiritual Value).



Tree 65: *Quercus robur*

Location: 325 Ligar Street Soldiers Hill

Botanical Name: *Quercus robur*

Common Name: English Oak

Origin: Europe

No of Trees: 1

Access: Restricted Access Private Tree

National Trust (Victoria) Tree: No

Health: Good

Structure: Good

Estimated Age: 140

Height (m): 18

Spread (m): 24

A large Oak in the back yard of a residential area in Soldiers Hill. A native to Europe this is a fine specimen of *Quercus robur*. In Europe the timber is commonly used for construction and furniture. This tree is one of the largest private trees within the historic Soldiers Hill area. The house is circa 1890 and the tree was probably planted soon after the current owners have the tree cared for by an arborist on a regular basis. This specimen is an exceptional tree in terms of categories 2. (Location or Context), 4. (Particularly Old) and 8. (Historical Value).



Tree 66: *Ulmus x hollandica*

Location: 30 St Glen's Way, Lake Gardens

Botanical Name: *Ulmus x hollandica*

Common Name: Dutch Elm

Origin: Europe

No of Trees: 2

Access: Restricted Access Private Tree

National Trust (Victoria) Tree: No

Health: Good

Structure: Good

Estimated Age: 100+

Height (m) Tree1: 25 Tree2: 21

Spread (m): 18

Two mature Dutch Elms in the front yard of this address, these trees would have also formed part of the former Lake Side Hospital grounds. A natural hybrid between Wych Elm (*U. glabra*) and Field Elm (*U. minor*) a large tree when mature growing to 40 metres. Tree one to the right of the property dominates the view while the smaller tree two to the left has a one-sided canopy competing for space. The larger tree has two cables in the canopy. These specimens are exceptional trees in terms of categories 4. (Particularly Old), 6. (Aesthetic Value), 8. (Historical Value), and 12. (Social, Cultural or Spiritual Value).



Tree 67: *Schinus molle*

Location: Hill Street (Bridge), Yarrowee River, Mt Pleasant

Botanical Name: *Schinus molle*

Common Name: Peppercorn Tree

Origin: Northern South America, Peru, Argentina and Central Chile

No of Trees: 1

Access: Unrestricted

National Trust (Victoria) Tree: No

Health: Excellent

Structure: Fair

Estimated Age: 100+

Height (m): 17

Spread (m): 25

Although *Schinus mole* is classed as a weed throughout parts of Victoria this example of the species is an impressive tree. Peppercorn trees are native to northern South America and are a drought-tolerant hardy evergreen tree. This specimen demands an impressive position along the Yarrowee River and stands out in the landscape. This specimen is an exceptional tree in terms of categories 2. (Location or Context), 4. (Particularly Old), 5. (Outstanding Size), 6. (Aesthetic Value) and 7. (Curious Growth Form).



Tree 68: *Quercus robur*

Location: 180 Gillies Street, Lake Wendouree

Botanical Name: *Quercus robur*

Common Name: English Oak

Origin: Europe

No of Trees: 1

Access: Unrestricted

National Trust (Victoria) Tree: No

Health: Excellent

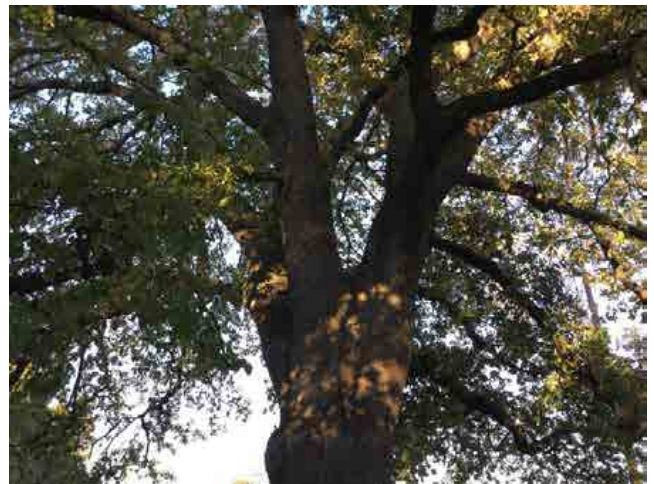
Structure: Excellent

Estimated Age: 100+

Height (m): 28

Spread (m): 30

This very large tree in front of the Gillies Street campus of Federation University is a very good example of this species. English oak is native to most of Europe and grows to 20-30 metres. This mature Oak has a very visual presence in the landscape. This specimen is an exceptional tree in terms of categories 1. (Horticultural Value), 2. (Location or Context), 4. (Particularly Old), 5. (Outstanding Size), 6. (Aesthetic Value), 8. (Historical Value) and 10. (Outstanding Example of Species).



Tree 69: *Ulmus viminalis*

Location: 1123 Lydiard Street North, Ballarat North

Botanical Name: *Ulmus viminalis*

Common Name: Hybrid Elm

Origin: Exotic

No of Trees: 1

Access: Unrestricted

National Trust (Victoria) Tree: No

Health: Excellent

Structure: Good

Estimated Age: 70+

Height (m): 25

Spread (m): 17

Ulmus viminalis is a hybrid between *Ulmus minor* (Field Elm) and *Ulmus minor var plotii* (Lock Elm). The species has a rounded crown, dull green foliage with a deeply cut leaf margin. Rare tree and the only one in Ballarat that we know off. This is a good mature tree with good structure, its only downfall is the continuous pruning for low voltage powerlines that happens on a regular basis. This specimen is an exceptional tree in terms of categories 1. (Horticultural Value), 3. (Rare or Localised) and 6. (Aesthetic Value)



Botanical Name: *Eucalyptus yarrianges*

Common Name: Yarra Gum

Origin: Indigenous/Native

No of Trees: 1

Access: Unrestricted

National Trust (Victoria) Tree: No

Health: Excellent

Structure: Good

Estimated Age: 100+

Height (m): 29

Spread (m): 27

Large remnant Yarra Gum behind The Global Innovation Centre. Often mistaken for *Eucalyptus ovata* (Swamp Gum) this species is not as common. This is a large tree that has survived development with broad spreading limbs and good structure. Tree has been pruned in the past to allow for construction of buildings. This specimen is an exceptional tree in terms of categories 1. (Horticultural Value), 2. (Location or Context), 3. (Rare or Localised), 4. (Particularly Old), and 11 (Outstanding Habitat Value).



Tree 71: *Cedrus deodara*

Location: Skipton Street and South Street intersection, Ballarat

Botanical Name: *Cedrus deodara*

Common Name: Himalayan Cedar/Deodar Cedar

Origin: Asia (Himalayan Mountains)

No of Trees: 1

Access: Unrestricted

National Trust (Victoria) Tree: No

Health: Excellent

Structure: Good

Estimated Age: 100+

Height (m): 18

Spread (m): 25

Large Cedar growing at the intersection of three streets this is an attractive tree that stands out in the streetscape. Native to Western Himalayan Mountains (Afghanistan, Pakistan and India). A large evergreen coniferous tree growing to approximately 40 metres considered a divine tree among the Hindu faith. This specimen is an exceptional tree in terms of categories 2. (Location or Context), 4. (Particularly Old), 5. (Outstanding Size) and 6. (Aesthetic Value).



Tree 72: *Eucalyptus botryoides*

Location: 3 St Andrews Place, Lake Gardens

Botanical Name: *Eucalyptus botryoides*

Common Name: Southern Mahogany

Origin: Native/Southeast Australia

No of Trees: 1

Access: Unrestricted

National Trust (Victoria) Tree: No

Health: Excellent

Structure: Good

Estimated: Age: 80

Height (m): 27

Spread (m): 26

Large Mahogany Gum that would have formed part of the Lakeside Hospital Gardens. This is an impressive tree and quite possible the largest *E. botryoides* in Ballarat. Native to southeast Australia and can reach up to 40 meters. This specimen is an exceptional tree in terms of categories 2. (Location or Context), 3. (Rare or Localised), 4. (Particularly Old), 5. (Outstanding Size), 6. (Aesthetic Value), 8. (Historical Value), 11 (Outstanding Habitat Value), and 12. (Social cultural or Spiritual Value).



Tree 73: *Eucalyptus obliqua*

Location: Council reserve behind 21 Shakespeare Avenue, Mt Helen.

Botanical Name: *Eucalyptus obliqua*

Common Name: Messmate

Origin: Indigenous/Native

No of Trees: 1

Access: Unrestricted

National Trust (Victoria) Tree: No

Health: Excellent

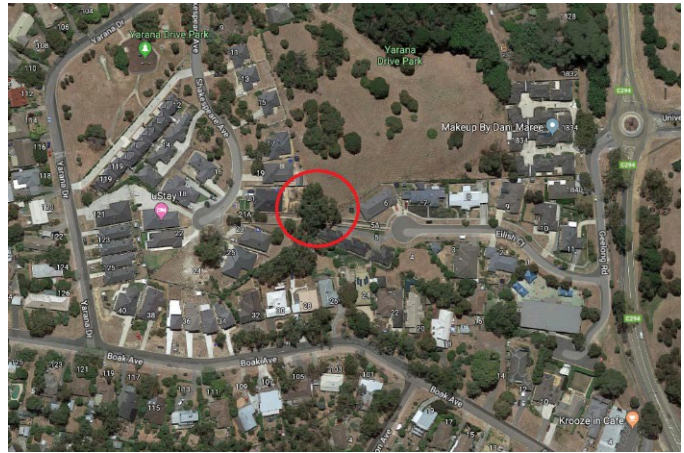
Structure: Good

Estimated Age: 100+

Height (m): 35

Spread (m): 30

Very large Messmate that is a remnant tree hidden behind houses in a small council reserve, with a DBH of 187cms. This is an impressive tree that has survived development around it, a hardwood tree native to south-eastern Australia. This species can reach up to 90 metres in some instances. *Eucalyptus obliqua* is an important koala food and habit tree. Splits into two trunks at 2 metres and has good structured unions and good overall structure. This specimen is an exceptional tree in terms of categories 2. (Location or Context), 4. (Particularly Old), 5. (Outstanding Size), 6. (Aesthetic Value), 10. (Outstanding Example of Species) and 11 (Outstanding Habitat Value).



Tree 74: *Eucalyptus viminalis* spp *viminalis*

Location: 202-204 Nolan Street, Buninyong
Botanical Name: *Eucalyptus viminalis* spp *viminalis*
Common Name: River Red Gum
Origin: Indigenous/Native
No of Trees: 1
Access: Unrestricted
National Trust (Victoria) Tree: No
Health: Good
Structure: Fair
Estimated Age: 150+
Height (m): 29
Spread (m): 22

This tree has significant Aboriginal cultural heritage. A towering Manna Gum in the middle of a residential street in Buninyong. It is called the corroboree tree. The tree is hundreds of years old and was a gathering place for the Wathaurung people. The DBH is around 3 metres although the trunk is a bit hard to measure accurately this tree has lots of hollows and is a great habitat tree. Showing signs of it's age the tree has lots of pruning cuts and lots of wounds where it has lost branches in the past. This specimen is an exceptional tree in terms of categories 4. (Particularly Old), 5. (Outstanding Size), 6. (Aesthetic Value), 7. (Curious Growth Form), 8. (Historical Value), 9 (Aboriginal Association), 11 (Outstanding Habitat Value), and 12. (Social Cultural or Spiritual Value).



Tree 75: *Eucalyptus camaldulensis*

Location: Dyte Parade (Community Gardens), Ballarat East

Botanical Name: *Eucalyptus camaldulensis*

Common Name: River Red Gum

Origin: Indigenous/Native

No of Trees: 1

Access: Unrestricted

National Trust (Victoria) Tree: No

Health: Excellent

Structure: Good

Estimated Age: 100+

Height (m): 36

Spread (m): 21

Large very tall Eucalyptus over 100 years old and with a DBH of 127cms this tree grows next to the community gardens in Dyte Parade just off Queen Street (previously a tennis court). This tree represents a good example of this species and has high aesthetic values as it stands out and can be seen from a good distance. The canopy has been over pruned in the past and raised but it is still an outstanding tree. This specimen is an exceptional tree in terms of categories 4. (Particularly Old), 5. (Outstanding Size) and 6. (Aesthetic Value).



Tree 76: *Populus deltoides*

Location: Kirks Reservoir Gardens, Gong Gong

Botanical Name: *Populus deltoides*

Common Name: Eastern Cottonwood

Origin: Exotic

No of Trees: 1

Access: Unrestricted

National Trust (Victoria) Tree: No

Health: Excellent

Structure: Excellent

Age: 100+

Height (m): 36

Spread (m): 26

Large Poplar in the gardens of Kirks Reservoir this tree represents a fine example of the species. Quite possibly the largest poplar of this species in Ballarat apart from the one in the Ballarat Botanical Gardens near the fernery. Mr Kirk sold the reservoir to the Victorian Government back in 1861 and Kirks reservoir became Ballarat's first permanent water supply. The gardens were constructed around the 1900's. A popular tree for people to have weddings and party under. Eastern Cottonwood is native to the USA. This specimen is an exceptional tree in terms of categories 2. (Location or Context), 6. (Aesthetic Value) and 8. (Historical Value).



Tree 77: *Eucalyptus viminalis* ssp *viminalis*

Location: Yarrawee aRiver, Wallaby Track, Brown Hill

Botanical Name: *Eucalyptus viminalis* ssp *viminalis*

Common Name: Manna Gum

Origin: Indigenous/Native

No of Trees: 1

Access: Unrestricted

National Trust (Victoria) Tree: No

Health: Excellent

Structure: Good

Estimated Age: 100+

Height (m): 35

Spread (m): 31

Massive remnant Manna Gum along the Yarrawee River. This tree represents outstanding habitat value and is a fantastic feature as you walk along the Wallaby Track. This tree has lost a few large limbs in the past and has lots of hollows. This specimen is an exceptional tree in terms of categories 4. (Particularly Old), 5. (Outstanding Size), 7. (Curious Growth Form) and 11 (Outstanding Habitat Value).



Tree 78: *Corymbia ficifolia*

Location: Victoria Street Gardens, Ballarat East, Opposite No. 168
Botanical Name: *Corymbia ficifolia*
Common Name: Red Flowering Gum
Origin: Native (Western Australia)
No of Trees: 1
Access: Unrestricted
National Trust (Victoria) Tree: No
Health: Excellent
Structure: Good
Estimated Age: 100+
Height (m): 6
Spread (m): 12

Corymbia ficifolia is a small native tree indigenous to a small area of south coastal Western Australia measured only in tens of square kilometres. Changed from *Eucalyptus ficifolia* to *Corymbia ficifolia* in 1995 it is widely planted as an ornamental tree. This tree makes up three *Corymbia ficifolias* planted as part of the Victoria Street Gardens, they are all around 100 years old. This specimen is an exceptional tree in terms of categories 4. (Particularly Old), 6. (Aesthetic Value) and 8. (Historical Value),



Tree 79: *Corymbia ficifolia*

Location: Victoria Street Gardens, Opposite No. 166, Ballarat,

Botanical Name: *Corymbia ficifolia*

Common Name: Red Flowering Gum

Origin: Native (Western Australia)

No of Trees: 1

Access: Unrestricted

National Trust (Victoria) Tree: No

Health: Excellent

Structure: Good

Estimated Age: 100+

Height (m): 7

Spread (m): 10

Corymbia ficifolia is a small native tree indigenous to a small area of south coastal Western Australia measured only in tens of square kilometres. Changed from *Eucalyptus ficifolia* to *Corymbia ficifolia* in 1995 it is wildly planted as an ornamental tree. This tree makes up three *Corymbia ficifolias* planted as part of the Victoria Street Gardens. They are all around 100 years old. This specimen is an exceptional tree in terms of categories 4. (Particularly Old), 5. (Outstanding Size), 6. (Aesthetic Value) and 8. (Historical Value).



Tree 80: *Corymbia ficifolia*

Location: Victoria Street Gardens, St Alipius Parish School, Ballarat

Botanical Name: *Corymbia ficifolia*

Common Name: Red Flowering Gum

Origin: Native

No of Trees: 1

Access: Unrestricted

National Trust (Victoria) Tree: No

Health: Excellent

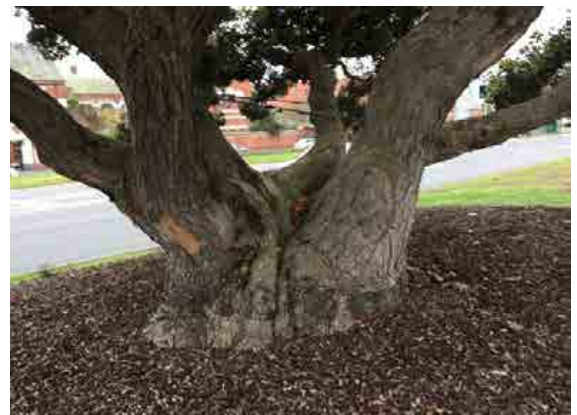
Structure: Fair

Age: 100+

Height (m): 7

Spread (m): 10

Corymbia ficifolia is a small native tree indigenous to a small area of south coastal Western Australia measured only in tens of square kilometres. Changed from *Eucalyptus ficifolia* to *Corymbia ficifolia* in 1995 it is wildly planted as an ornamental tree. This tree makes up three *Corymbia ficifolias* planted as part of the Victoria Street Gardens, they are all around 100 years old. This tree is particularly unusual as it has five cables holding the tree together. This tree looks much older than the other two *Corymbia ficifolias* in Victoria Street but was probably planted around the same time. This specimen is an exceptional tree in terms of categories 1. (Horticultural Value), 4. (Particularly Old), 6. (Aesthetic Value), 7. (Curious Growth Form) and 8. (Historical Value).



Tree 81: *Quercus canariensis*

Location: Sturt Street centre median, Ballarat Central

Botanical Name: *Quercus canariensis*

Common Name: Algerian Oak

Origin: Portugal, Spain, Tunisia,

Algeria and Morocco

No of Trees: 1

Access: Unrestricted

National Trust (Victoria) Tree: No

Health: Excellent

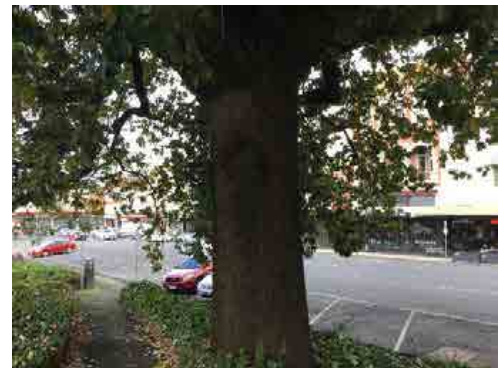
Structure: Excellent

Estimated Age: 100+

Height (m): 23

Spread (m): 34

Large Algerian Oak in the median strip at the start of Sturt Street. This tree is native to Portugal, Spain, Tunisia, Algeria and Morocco. These trees have historic value as well as aesthetic values and are a fantastic sight as you enter Sturt Street. This tree is located opposite Irish Murphys Pub. This specimen is an exceptional tree in terms of categories 2. (Location or Context), 4. (Particularly Old), 6. (Aesthetic Value), 8. (Historical Value) and 10. (Outstanding Example of species).



Tree 82: *Quercus canariensis*

Location: Sturt Street centre median, Ballarat Central

Botanical Name: *Quercus canariensis*

Common Name: Algerian Oak

Origin: Portugal, Spain, Tunisia,

Algeria and Morocco

No of Trees: 1

Access: Unrestricted

National Trust (Victoria) Tree: No

Health: Excellent

Structure: Excellent

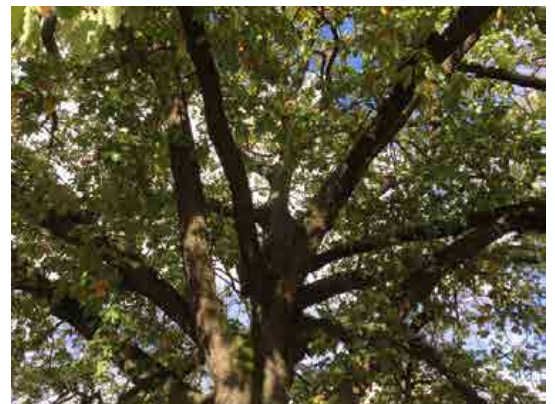
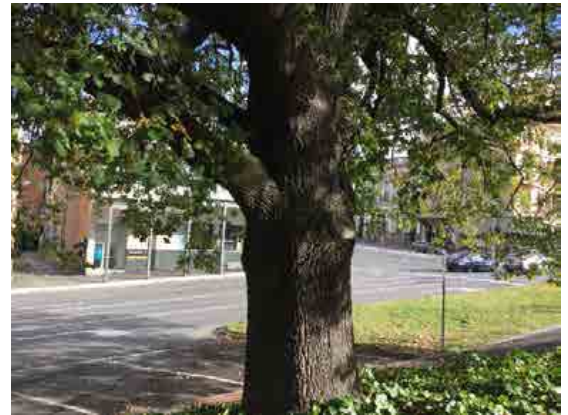
Estimated Age: 100+

Height (m): 20

Spread (m): 32



Large Algerian Oak in the median strip at the start of Sturt Street. This tree is native to Portugal, Spain, Tunisia, Algeria and Morocco. These trees have historic value as well as aesthetic values and are a fantastic sight as you enter Sturt Street. This tree is located on the corner of Sturt Street and Lydiard Street near the Robert Burns Statue. This specimen is an exceptional tree in terms of categories 2. (Location or Context), 4. (Particularly Old), 6. (Aesthetic Value) and 8. (Historical Value).



Tree 83: *Eucalyptus globulus* spp *globulus*

Location: Scott Parade Reserve corner of Humffray Street, Ballarat East

Botanical Name: *Eucalyptus globulus* spp *globulus*

Common Name: Tasmanian Blue Gum

Origin: Native

No of Trees: 1

Access: Unrestricted

National Trust (Victoria) Tree: No

Health: Excellent

Structure: Excellent

Estimated Age: 100+

Height (m): 32

Spread (m): 29

Scott Parade hosts several Large Tasmanian Blue Gums that are all over 100 years old. Tasmanian Blue gums are native to Tasmania and Southern Victoria (Otway Ranges and southern Gippsland). There are also patches on King Island and Flinders Island. Heavily planted as a plantation tree for pulp or firewood Blue Gums are planted around the world and is the most extensively cultivated Eucalyptus tree. There is approximately 4,500 square kilometres of Blue Gums currently planted in Australia as plantations. This tree is a good specimen with excellent structure and an unusual growth feature at the base of the tree. This specimen is an exceptional tree in terms of categories 5. (Outstanding Size), 6. (Aesthetic Value), 7. (Curious Growth Form), 8. (Historical Value) and 11 (Outstanding Habitat Value).



Tree 84: *Eucalyptus globulus* spp *globulus*

Location: Scotts Parade Reserve corner Princess Street,
Ballarat East

Botanical Name: *Eucalyptus globulus* spp *globulus*

Common Name: Tasmanian Blue Gum

Origin: Native

No of Trees: 1

Access: Unrestricted

National Trust (Victoria) Tree: No

Health: Excellent

Structure: Excellent

Estimated Age: 100+

Height (m): 37

Spread (m): 29

Scott Parade hosts several Large Tasmanian Blue Gums that are all over 100 years old. Tasmanian Blue gums are native to Tasmania and Southern Victoria (Otway Ranges and southern Gippsland). There are also patches on King Island and Flinders Island. Heavily planted as a plantation tree for pulp or firewood Blue Gums are planted around the world and is the most extensively cultivated *Eucalyptus* tree. There is approximately 4,500 square kilometres of Blue Gums currently planted in Australia as plantations. This tree has excellent structure and is a fine specimen at 37 metres tall. This specimen is an exceptional tree in terms of categories 4. (Particularly Old), 5. (Outstanding Size), 6. (Aesthetic Value), 8. (Historical Value) and 11 (Outstanding Habitat Value).



Tree 85: *Eucalyptus globulus* spp *globulus*

Location: Scott Parade Reserve opposite no. 165, Ballarat East

Botanical Name: *Eucalyptus globulus* spp *globulus*

Common Name: Tasmanian Blue Gum

Origin: Native

No of Trees: 1

Access: Unrestricted

National Trust (Victoria) Tree: No

Health: Good

Structure: Poor

Estimated Age: 100+

Height (m): 25

Spread (m): 18

Scott Parade hosts several Large Tasmanian Blue Gums that are all over 100 years old. Tasmanian Blue Gums are native to Tasmania and Southern Victoria (Otway Ranges and southern Gippsland). There are also patches on King Island and Flinders Island. Heavily planted as a plantation tree for pulp or firewood Blue Gums are planted around the world and is the most extensively cultivated Eucalyptus tree. There is approximately 4,500 square kilometres of Blue Gums currently planted in Australia as plantations. This tree has poor structure but high values as a habitat, historical and aesthetic tree. This specimen is an exceptional tree in terms of categories 6. (Aesthetic Value), 8. (Historical Value), and 11 (Outstanding Habitat Value).



Tree 86: *Eucalyptus globulus* spp *globulus*

Location: Scotts Parade Reserve opposite No. 167, Ballarat East

East

Botanical Name: *Eucalyptus globulus* spp *globulus*

Common Name: Tasmanian Blue Gum

Origin: Native

No of Trees: 1

Access: Unrestricted

National Trust (Victoria) Tree: No

Health: Good

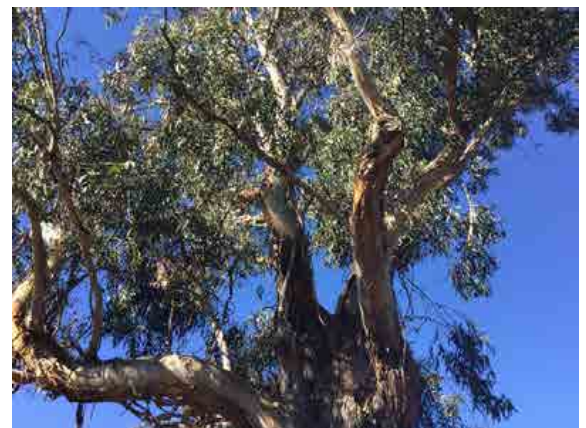
Structure: Fair

Estimated Age: 100+

Height (m): 25

Spread (m): 19

Scott Parade hosts several Large Tasmanian Blue Gums that are all over 100 years old. Tasmanian Blue gums are native to Tasmania and Southern Victoria (Otway Ranges and southern Gippsland). There are also patches on King Island and Flinders Island. Heavily planted as a plantation tree for pulp or firewood Blue Gums are planted around the world and is the most extensively cultivated Eucalyptus tree. There is approximately 4,500 square kilometres of Blue Gums currently planted in Australia as plantations. This tree has poor structure but high values as a habitat, historical and aesthetic tree. This specimen is an exceptional tree in terms of categories 6. (Aesthetic Value), 8. (Historical Value), and 11 (Outstanding Habitat Value).



Tree 87: *Eucalyptus globulus* spp *globulus*

Location: Scott Parade Reserve opposite 187, Ballarat East

Botanical Name: *Eucalyptus globulus* spp *globulus*

Common Name: Tasmanian Blue Gum

Origin: Native

No of Trees: 1

Access: Unrestricted

National Trust (Victoria) Tree: No

Health: Excellent

Structure: Good

Estimated Age: 100+

Height (m): 26

Spread (m): 35

Scott Parade hosts several Large Tasmanian Blue Gums that are all over 100 years old. Tasmanian Blue gums are native to Tasmania and Southern Victoria (Otway Ranges and southern Gippsland). There are also patches on King Island and Flinders Island. Heavily planted as a plantation tree for pulp or firewood Blue Gums are planted around the world and is the most extensively cultivated Eucalyptus tree. There is approximately 4,500 square kilometres of Blue Gums currently planted in Australia as plantations. This tree is the biggest of the Scott Parade trees and is a very impressive specimen. The pictures don't do it justice. This specimen is an exceptional tree in terms of categories 5. (Outstanding Size), 6. (Aesthetic Value), 8. (Historical Value), 10. (Outstanding Example of Species) and 11 (Outstanding Habitat Value).



Tree 88: *Eucalyptus globulus* spp *globulus*

Location: Scotts Parade Reserve opposite No. 195, Ballarat East

Botanical Name: *Eucalyptus globulus* spp *globulus*

Common Name: Tasmanian Blue Gum

Origin: Native

No of Trees: 1

Access: Unrestricted

National Trust (Victoria) Tree: No

Health: Excellent

Structure: Good

Estimated Age: 100+

Height (m): 26

Spread (m): 32

Scott Parade hosts several Large Tasmanian Blue Gums that are all over 100 years old. Tasmanian Blue gums are native to Tasmania and Southern Victoria (Otway Ranges and southern Gippsland). There are also patches on King Island and Flinders Island. Heavily planted as a plantation tree for pulp or firewood Blue Gums are planted around the world and is the most extensively cultivated *Eucalyptus* tree. There is approximately 4,500 square kilometres of Blue Gums currently planted in Australia as plantations. A large impressive specimen near Rice Street and a valuable specimen. This specimen is an exceptional tree in terms of categories 5. (Outstanding Size), 6. (Aesthetic Value), 8. (Historical Value), 10. (Outstanding Example of Species), and 11 (Outstanding Habitat Value).



Tree 89: *Eucalyptus viminalis* ssp *viminalis* + *Eucalyptus ovata*

Location: Ballantrae Homestead 7208 Midland Highway, Buninyong
Botanical Name: *Eucalyptus viminalis* ssp *viminalis* and *Eucalyptus ovata*
Common Name: Manna Gum and Swamp Gum
Origin: Indigenous/Native
No of Trees: 7
Access: Restricted Access Private Tree
National Trust (Victoria) Tree: No (Property listed with Heritage Victoria)
Health: Ranging from Excellent to Good
Structure: Ranging from Excellent to Fair
Estimated Age: 100+
Height: Tallest tree is 34 metres and the shortest tree is 21 metres
Spread: Ranging from 14 metres to 32 metres

The seven large *Eucalyptus* trees in the paddock surrounding this property are all remnant trees approximately 200 years old. The property was built in 1857 by Patricius William Welsh and is listed with Heritage Victoria as having historical and architectural significance. The seven trees considered as exceptional trees include four *Eucalyptus viminalis* (Manna Gum) and three *Eucalyptus ovata* (Swamp Gum). One tree in particular is considered as a scar tree. All seven trees are impressive specimens and worthy of nomination. These specimens are exceptional trees in terms of categories 2. (Location or Context), 4. (Particularly Old), 5. (Outstanding Size), 8. (Historical Value), 9 (Aboriginal Association), 11 (Outstanding Habitat Value), and 12. (Social Cultural or Spiritual Value).



Tree 90: *Sequoia sempervirens*

Location: Ballantrae 7208 Midland Highway, Buninyong

Botanical Name: *Sequoia sempervirens*

Common Name: California Redwood

Origin: USA

No of Trees: 1

Access: Restricted Access

Private Tree

National Trust (Victoria) Tree: No

Health: Excellent

Structure: Good

Estimated Age: 150+

Height (m): 29

Spread (m): 14

Large Californian Redwood close to the homestead this is a great specimen. Redwoods are an evergreen native to California and southwestern Oregon. Extensively harvested for their timber from the 1850s these trees are now protected from logging in their native environment. Redwoods are grown in plantations across the globe. The largest alive tree is 115.85 metres tall at the Redwood National State Park in California. This specimen is an exceptional tree in terms of categories 1. (Horticultural Value), 4. (Particularly Old) and 8.



Tree 91: *Cedrus atlantica*

Location: Ballantrae 7208 Midland Highway, Buninyong

Botanical Name: *Cedrus atlantica*

Common Name: Atlas Cedar

Origin: North Africa

No of Trees: 2

Access: Restricted Access

Private Trees

National Trust (Victoria) Tree: No

Health: Excellent

Structure: Excellent

Estimated Age: 150+

Height (m): 22 (both trees are similar size)

Spread (m): 15 (both trees are similar size)

The Blue Atlas Cedar is native to the Atlas Mountains of Morocco and to the Tell Atlas in Algeria (North Africa). Not a common tree planted in Victoria and there are few in Ballarat. Evergreen large coniferous tree growing to approximately 30 meters. A tree that can grow in dry and hot conditions and has been planted in plantations for timber production. These two trees are over 100 years old and although competing for space with surrounding trees are good specimens. These specimens are exceptional trees in terms of categories 1. (Horticultural Value), 2. (Location or Context), 3. (Rare or



Tree 92: *Araucaria bidwillii*

Location: Ballantrae 7208 Midland Highway Buninyong

Botanical Name: *Araucaria bidwillii*

Common Name: Bunya Pine

Origin: Native

No of Trees: 2

Access: Restricted Access

Private Trees

National Trust (Victoria) Tree: No

Health: Good

Structure: Good

Estimated Age: 100+

Height (m): 24 (both trees are similar size)

Spread (m): 17(both trees are similar size)

Araucaria bidwillii is native to southwest Queensland in small patches in the wild. The tree has significance in the Aboriginal Community being called the bunya, bonye, bunyi or bunya-bunya in various Aboriginal languages. Bunya pines can grow to 35 to 40 metres and live for 500 years. These two trees have the typical growth habit of Bunya pines and are good specimens. These specimens are exceptional trees in terms of categories 1. (Horticultural Value), 2. (Location or Context) and 8. (Historical



Tree 93: *Picea abies*

Location: Ballantrae 7208 Midland Highway, Buninyong

Botanical Name: *Picea abies*

Common Name: Norway Spruce

Origin: Europe

No of Trees: 1

Access: Restricted Access

Private Tree

National Trust (Victoria) Tree: No

Health: Good

Structure: Good

Estimated Age: 100+

Height (m): 24

Spread (m): 11

This species of tree is native to Europe and can grow to 35-55 metres tall. An evergreen coniferous tree and is sort after for its fine timber in furniture making. A good tree, there are not many Spruce trees of this maturity in Ballarat. This specimen is an exceptional tree in terms of categories 1. (Horticultural Value), 2. (Location or Context), 3. (Rare or Localised) and 8. (Historical Value).



Tree 94: *Cedrus deodora*

Location: Ballantrae 7208 Midland Highway Buninyong

Botanical Name: *Cedrus deodora*

Common Name: Deodar Cedar

Origin: Asia (Himalayan Mountains)

No of Trees: 1

Access: Restricted Access

Private Tree

National Trust (Victoria) Tree: No

Health: Good

Structure: Good

Estimated Age: 100+

Height (m): 25

Spread (m): 23

Native to Western Himalayan Mountains (Afghanistan, Pakistan and India). A large evergreen coniferous tree growing to approximately 40 metres considered a divine tree among the Hindu faith. This is a large fine specimen in the grounds of the homestead. It takes over a large area and is a great focal point as you enter the property. This specimen is an exceptional tree in terms of categories 2. (Location or Context), 5. (Outstanding Size) and 8. (Historical Value).



Tree 95: *Ulmus glabra* 'Lutescens

Location: 235 Lydiard North Street, North Ballarat

Botanical Name: *Ulmus glabra* 'Lutescens

Common Name: Golden Wych Elm

Origin: Exotic

No of Trees: 1

Access: Restricted Access

Private Tree

National Trust (Victoria) Tree: No

Health: Excellent

Structure: Fair

Estimated Age: 100+

Height (m): 18

Spread (m): 21

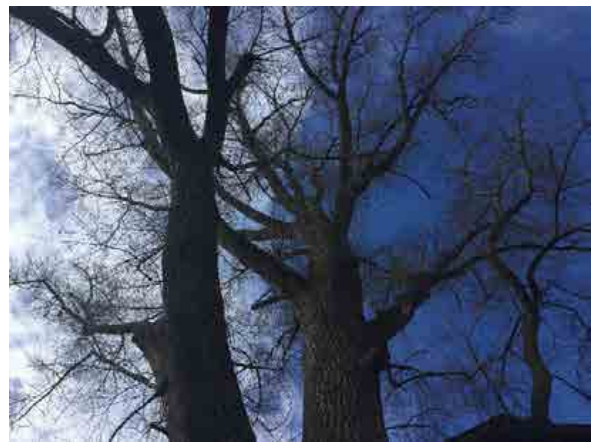
This Golden Wych Elm is a dominant feature in this block of Lydiard Street. Although the trees structure and precious pruning from power lines have taken away some of the quality of the tree it is still a fine specimen. The Golden Wych Elm is an Elm cultivar discovered in a nursery in the York area in the early 19th century. There are few specimens of this tree in Ballarat and quite possible the biggest example in Ballarat. This specimen is an exceptional tree in terms of categories 1. (Horticultural



Tree 96: *Populus deltoides*

Location: Ballarat Botanical Gardens
Botanical Name: *Populus deltoides*
Common Name: Eastern Cottonwood
Origin: North America, Canada
No of Trees: 1
Access: Unrestricted
National Trust (Victoria) Tree: No
Health Excellent
Structure: Good
Estimated Age: 100+
Height (m): 35
Spread (m): 28

This huge Poplar dominates the sky near the fernery in the Ballarat Botanical Gardens. Quite possibly the largest Poplar in Ballarat the Eastern Cottonwood is native to Southwestern Canada, United States and northeast Mexico. The oldest recorded tree was planted in 1870 in Hastings New Zealand and is 42 metres tall. This specimen is an exceptional tree in terms of categories 2. (Location or Context), 4. (Particularly Old), 5. (Outstanding Size), 6. (Aesthetic Value), 8. (Historical Value) and 10. (Outstanding Example of Species).



Tree 97: *Quercus canariensis*

Location: Ballarat Botanical Gardens

Botanical Name: *Quercus canariensis*

Common Name: Algerian Oak

Origin: Portugal, Tunisia, Algeria, Morocco

No of Trees: 1

Access: Unrestricted

National Trust (Victoria) Tree: No

Health Good

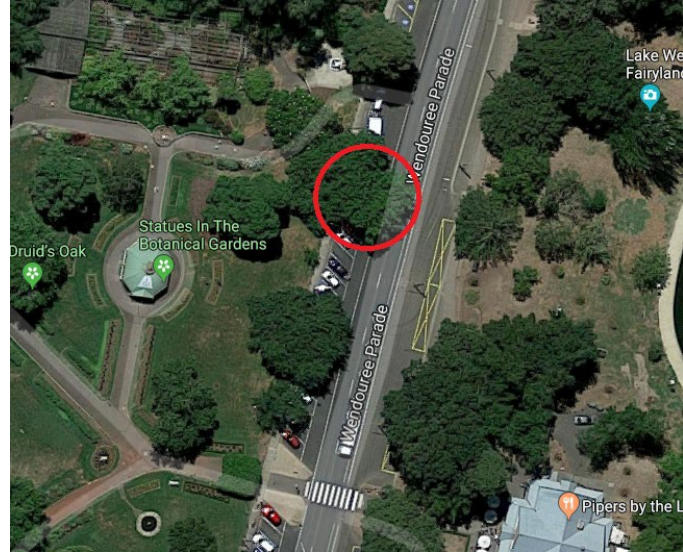
Structure: Good

Estimated Age: 100+

Height (m): 25

Spread (m): 32

Quercus canariensis on Wendouree Parade near the Morey Gates of the Ballarat Botanical Gardens. Algerian Oak is a large tree at maturity with some specimens reaching 35 metres. In Kyneton's Botanical Gardens there is a specimen planted on 19th May 1864. Ballarat has several mature Algerian Oaks including these one and three large specimens in Sturt Street. This specimen is an exceptional tree in terms of categories 2. (Location or Context), 4. (Particularly Old), 6. (Aesthetic Value), 8. (Historical Value) and 10. (Outstanding Example of Species).



Tree 98: *Ulmus glabra* 'Camperdownii'

Location: Ballarat Botanical Gardens
Botanical Name: *Ulmus glabra* 'Camperdownii'
Common Name: Camperdown Elm
Origin: Scotland
No of Trees: 1
Access: Unrestricted
National Trust (Victoria) Tree: No
Health: Good
Structure: Good
Estimated Age: 60+
Height (m): 7
Spread (m): 10

The Wedding Elm in the Ballarat Botanical Gardens is a double stemmed grafted Camperdown Elm grafted onto Wych Elm trunks. This is a rare tree and there are not many Camperdown Elms in Ballarat and nothing like this tree. Used for wedding ceremonies and pictures as a representation of a union between partners. This specimen is an exceptional tree in terms of categories 1. (Horticultural Value), 3. (Rare or Localised), 7. (Curious Growth Form), 8. (Historical Value), and 12. (Social Cultural or Spiritual Value).



Tree 99: *Ulmus glabra* 'Louis van Houtte'

Location: Ballarat Botanical Gardens
Botanical Name: *Ulmus glabra* 'Louis van Houtte'
Common Name: Golden Elm
Origin: Europe
No of Trees: 1
Access: Unrestricted
National Trust (Victoria) Tree: No
Health: Good
Structure: Good
Estimated Age: 90+
Height (m): 25
Spread (m): 22

This elm is thought to be a cultivar from *Ulmus x hollandica* (Dutch Elm) first cultivated in Ghent Belgium circa 1863. Named after the Belgian horticulturist and plant collector Louis Benoit van Houtte. This is a large specimen with good structure and is an important feature in the Ballarat Botanical Gardens. This specimen is an exceptional tree in terms of categories 1. (Horticultural Value), 3. (Rare or Localised), 5. (Outstanding Size), 6. (Aesthetic Value) and 8. (Historical Value).



Tree 100: *Cupressus sempervirens*

Location: 106 Lexton Street, Ballarat Central

Botanical Name: *Cupressus sempervirens*

Common Name: Mediterranean Cypress

Origin: Mediterranean Region

No of Trees: 1

Access: Unrestricted

National Trust (Victoria) Tree: No

Health: Fair

Structure: Good

Estimated Age: 100+

Height (m): 22

Spread (m): 10

Mediterranean Cypress is a large compact coniferous evergreen native from the Mediterranean region. Widely cultivated across the globe this species is found in gardens and reserves and planted as street trees. It is also known for its very durable scented wood used most famously for the doors of St. Peter's Basilica in the Vatican City. These street trees remain from a large avenue running north south from Howitt street to the Cemetery. This tree has been possibly affected by cypress canker as large areas of the canopy are defoliated. This specimen is an exceptional tree in terms of categories 4. (Particularly Old), 6. (Aesthetic Value) and 8. (Historical Value).



Tree 101: *Cupressus sempervirens*

Location: 112 Lexton Street, Ballarat Central

Botanical Name: *Cupressus sempervirens*

Common Name: Mediterranean Cypress

Origin: Mediterranean Region

No of Trees: 1

Access: Unrestricted

National Trust (Victoria) Tree: No

Health: Excellent

Structure: Good

Estimated Age: 100+

Height (m): 26

Spread (m): 13

Mediterranean Cypress is a large compact coniferous evergreen native from the Mediterranean region. Widely cultivated across the globe this species is found in gardens and reserves and planted as street trees. It is also known for its very durable scented wood used most famously for the doors of St. Peter's Basilica in the Vatican City. These street trees remain from a large avenue running north south from Howitt street to the Cemetery. This specimen is an exceptional tree in terms of categories 4. (Particularly Old), 6. (Aesthetic Value) and 8. (Historical Value).



Tree 102: *Eucalyptus ovata*

Location: Ballarat Botanical Gardens (Australian Ex-Prisoners of War Memorial)

Botanical Name: *Eucalyptus ovata*

Common Name: Swamp Gum

Origin: Indigenous/Native

No of Trees: 1

Access: Unrestricted

National Trust (Victoria) Tree: No

Health: Good

Structure: Fair

Estimated Age: 100+

Height (m): 22

Spread (m): 18

Possibly a remnant Swamp Gum located near the Australian Ex-Prisoners of War Memorial. This tree has lost a large limb in the past but has recovered well and is healthy. *Eucalyptus ovata* is native to Victoria, south-eastern NSW, south-west SA and Tasmania. This tree is a possible scar tree and is an important habitat tree with numerous hollows. This specimen is an exceptional tree in terms of categories 2. (Location or Context), 4. (Particularly Old), 6. (Aesthetic Value) and 12. (Social Cultural or Spiritual Value).



Tree 103: *Populus alba*

Location: Buninyong Botanic Gardens

Botanical Name: *Populus alba*

Common Name: White Poplar

Origin: Central Europe, Central Asia

No of Trees: 3

Access: Unrestricted

National Trust (Victoria) Tree: No

Health: Good

Structure: Good

Estimated Age: 100+

Height (m): 22

Spread (m): 18

Three mature Poplars near the Buninyong Botanic Garden old baths are a valuable addition to the gardens. Formally a group of six trees, three were removed due to poor structure, overcrowding and competition. The three best trees still remain and are growing well. These Poplars are extensively planted throughout Ballarat, but these three have historical values and are large specimens. White Poplar wood is often used for sculptures across Europe, China and the USA. In some areas this species is an environmental weed. These specimens are exceptional trees in terms of categories 2. (Location or Context), 6. (Aesthetic Value) and 8. (Historical Value).



Tree 104: *Ceratonia siliqua*

Location: Buninyong Botanical Gardens

Botanical Name: *Ceratonia siliqua*

Common Name: Carob

Origin: Mediterranean region and the Middle East.

No of Trees: 1

Access: Unrestricted

National Trust (Victoria) Tree: No

Health: Excellent

Structure: Poor

Estimated Age: 100+

Height (m): 7

Spread (m): 10

The Carob tree is a flowering evergreen of the legume family. The pods are dried and ground down to make carob powder, a cocoa powder replacement used as an alternative in chocolate. This tree has split in the past, but this hasn't affected the tree in any way, it is still very healthy with lots of new growth. There are signs of decay in the main leader due to previous pruning cuts. This tree has an ageless appearance to it and has stood the test of time. This specimen is an exceptional tree in terms of categories 2. (Location or Context), 3. (Rare or Localised), 4. (Particularly Old), 6. (Aesthetic Value), 7. (Curious Growth Form), and 8. (Historical Value).



Tree 105: *Quercus canariensis*

Location: Buninyong Botanical Gardens

Botanical Name: *Quercus canariensis*

Common Name: Algerian Oak

Origin: Portugal, Spain, Algeria, and Morocco.

No of Trees: 1

Access: Unrestricted

National Trust (Victoria) Tree: No

Health: Excellent

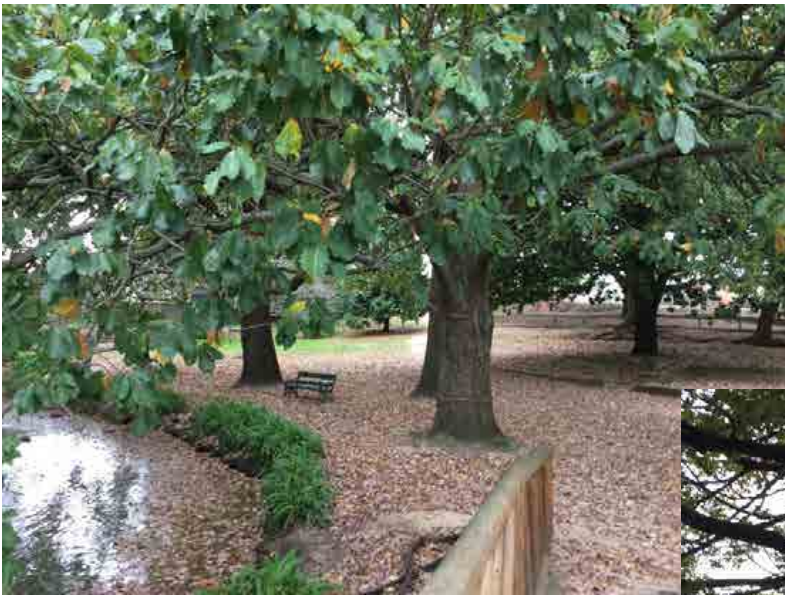
Structure: Good

Estimated Age: 100+

Height (m): 18

Spread (m): 24

This large oak was ringbarked in the past and repaired by a local arborist and is doing well. The bark grafts done by the arborist have worked well and are clearly visible. This has created an unusual feature on this tree. This tree has historical values as it is part of the original Botanic Garden plantings. This specimen is an exceptional tree in terms of categories 2. (Location or Context), 4. (Particularly Old), 6. (Aesthetic Value), and 8. (Historical Value).



Tree 106: *Ulmus glabra* 'Horizontalis'

Location: Buninyong Botanical Gardens
Botanical Name: *Ulmus glabra* 'Horizontalis'
Common Name: Weeping Wych Elm
Origin: Scotland.
No of Trees: 1
Access: Unrestricted
National Trust (Victoria) Tree: No
Health: Good
Structure: Fair
Estimated Age: 100+
Height (m): 22
Spread (m): 18

The first *Ulmus glabra* 'Horizontalis' was discovered in a Perth Scotland nursery in 1816 and soon became commercially available around the world. This mature tree has competition from larger surrounding trees but is healthy and growing well. This specimen is an exceptional tree in terms of categories 1. (Horticultural Value), 2. (Location or Context), 3. (Rare or Localised), 4. (Particularly Old), 5. (Outstanding Size), 6. (Aesthetic Value), 7. (Curious Growth Form), and 8. (Historical Value).



Tree 107: *Ulmus glabra* 'Camperdownii'

Location: 213 Howitt Street Soldiers Hill
Botanical Name: *Ulmus glabra* 'Camperdownii'
Common Name: Camperdown Elm
Origin: Scotland
No of Trees: 1
Access: Restricted Access Private Tree
National Trust (Victoria) Tree: No
Health: Good
Structure: Fair
Estimated Age: 100+
Height (m): 22
Spread (m): 18

The first *Ulmus glabra* 'Camperdownii' was discovered in the forest at Camperdown House in Dundee Scotland and soon became commercially available around the world. The original tree found is still growing in the gardens of Camperdown House. This tree was planted prior to 1939 and was part of the former Grange Estate. The tree was retained when the Estate was subdivided, and the house was set back on the lot to accommodate the tree. This tree is a fine specimen and outstanding example of the species. This specimen is an exceptional tree in terms of categories 1. (Horticultural Value), 2. (Location or Context), 4. (Particularly Old), 6. (Aesthetic Value), 7. (Curious Growth Form), and 8. (Historical Value).



Tree 108: *Grevillia robusta*

Location: Dyte Parade, Ballarat
Botanical Name: *Grevillia robusta*
Common Name: Silky Oak
Origin: Australia
No of Trees: 2
Access: Restricted
National Trust (Victoria) Tree: No
Health: Good
Structure: Good
Estimated Age: 80+
Height (m): 20 - 30
Spread (m): 18 - 25

Two large *Grevillia robusta* trees on the rail siding along Scott Parade. These two Silky Oaks are the biggest two trees of this species in Ballarat. A fast-growing evergreen occurs naturally on the coast and ranges in southern Queensland and in New South Wales. Silky Oaks make good street trees as they are resilient to many climates and usually have good form. These trees are also used for wood products such as furniture and building products because of their resilience to rot. This specimen is an exceptional tree in terms of categories 1. (Horticultural Value), 2. (Location or Context), 4. (Particularly Old), 5. (Outstanding Size), 6. (Aesthetic Value), 7. (Curious Growth Form) and 8. (Historical Value).



Tree 109: *Ulmus x hollandica* & *Quercus robur*

Location: 210 Old Melbourne Road, Brown Hill
Botanical Name: *Ulmus x hollandica* & *Quercus robur*
Common Name: Dutch Elm & English Oak
Origin: Europe
No of Trees: 9 Elms & 2 Oaks
Access: Restricted Access Private
Trees
National Trust (Victoria) Tree: No
Health: Good
Structure: Good
Estimated Age: 100+
Height (m): 15-20
Spread (m): 10-15

Locals refer to this property as the Old Manse but was a Parsonage purchased by Reverend Allbany in 1870. The address for this house was formally Lot 13 Victoria Street but was changed to 201 Melbourne Road with the highway development. These Elm and Oaks form a small avenue across the front of the property and are important trees historically and aesthetically. These specimens are exceptional trees in terms of categories 1. (Horticultural Value), 2. (Location or Context), 6. (Aesthetic Value), 8. (Historical Value) and 12. (Social cultural or Spiritual Value).



Tree 110: *Eucalyptus camaldulensis*

Lake Burrumbeet

Included on the register is the collection of exceptional *Eucalyptus camaldulensis* (River Red Gums) that are located on the foreshore around Lake Burrumbeet. Approximately 200 trees around the lake were nominated for the Exceptional Tree Register.

These trees are remnant vegetation and it is hard to age them, some are around 200-300 years old and a tree that was removed from the old caravan park site was reportedly around 500 years old. Red gums can grow anywhere between 400-1000 years old.

These trees have been included in the Register as exceptional tree in terms of categories: 1. (Horticultural Value), 2. (Location or Context), 4 (Particularly Old), 5 (Outstanding Size), 6 (Aesthetic Value), 8 (Historical Value), 9 (Aboriginal Association), 10 (Outstanding example of species), 11 (Outstanding Habitat Value), and 12 (Social, Cultural or Spiritual Value).



Lake Burrumbeet



Ballarat Avenue of Honour

The Ballarat Avenue of Honour is famous for being the first avenue of its kind in Australia (perhaps in the world) and the longest of its kind in the southern hemisphere. It incorporates the Ballarat Arch of Victory and extends for approximately 22 kilometres. The trees represent the Ballarat and district men and women who served in World War One - 528 of whom were killed in battle or died of wounds or disease.

The trees were planted in order of the soldier's enlistment along Remembrance Drive, consisting of 3,801 trees and where planted from 1917 and completed in 1919. Most of the cost for the plantings was met by the Lucas Girls through the sale of dolls made from scraps they had salvaged at the Lucas Clothing Factory. Most of the trees were planted by 500 employees of the Lucas Clothing Factory.

In 1934 the original Ballarat Avenue of Honour name plates fixed to the tree guards were replaced with the permanent bronze name plaques in the Avenue today after most of which were lost or missing. Manufactured by the Ballarat firm Mann Bros, the plaques were hand cast in gunmetal and bolted to mild steel straps set in concrete footings at the base of each tree.

These trees are listed with National Trust Victoria's Significant Trees Register and Heritage Victoria.



